

Anti-Dopamine Receptor D1 antibody [EP1560Y] ab81296

重组 RabMAb

★★★★☆ **4 Abreviews** **16 References** **5 图像**

概述

产品名称	Anti-Dopamine Receptor D1抗体[EP1560Y]
描述	兔单克隆抗体[EP1560Y] to Dopamine Receptor D1
宿主	Rabbit
经测试应用	适用于: WB 不适用于: Flow Cyt or ICC/IF
种属反应性	与反应: Mouse, Rat, Guinea pig, Human
免疫原	Synthetic peptide within Human Dopamine Receptor D1 aa 400 to the C-terminus (C terminal). The exact sequence is proprietary. Database link: P21728
阳性对照	WB: SH-SY5Y cell lysate, human fetal kidney, guinea pig brain, mouse and rat brain and kidney tissue lysates.
常规说明	This product is a recombinant monoclonal antibody, which offers several advantages including: - High batch-to-batch consistency and reproducibility - Improved sensitivity and specificity - Long-term security of supply - Animal-free production For more information see here . Our RabMAb [®] technology is a patented hybridoma-based technology for making rabbit monoclonal antibodies. For details on our patents, please refer to RabMAb[®] patents .

性能

形式	Liquid
存放说明	Shipped at 4°C. Store at +4°C short term (1-2 weeks). Upon delivery aliquot. Store at -20°C. Avoid freeze / thaw cycle.
存储溶液	pH: 7.2 Preservative: 0.01% Sodium azide Constituents: 40% Glycerol (glycerin, glycerine), 0.05% BSA, 59% PBS
纯度	Protein A purified
克隆	单克隆

克隆编号 EP1560Y

同种型 IgG

应用

The Abpromise guarantee **Abpromise™**承诺保证使用ab81296于以下的经测试应用

“应用说明”部分 下显示的仅为推荐的起始稀释度;实际最佳的稀释度/浓度应由使用者检定。

应用	Ab评论	说明
WB		1/1000 - 1/10000. Predicted molecular weight: 49 kDa.

应用说明 Is unsuitable for Flow Cyt or ICC/IF.

靶标

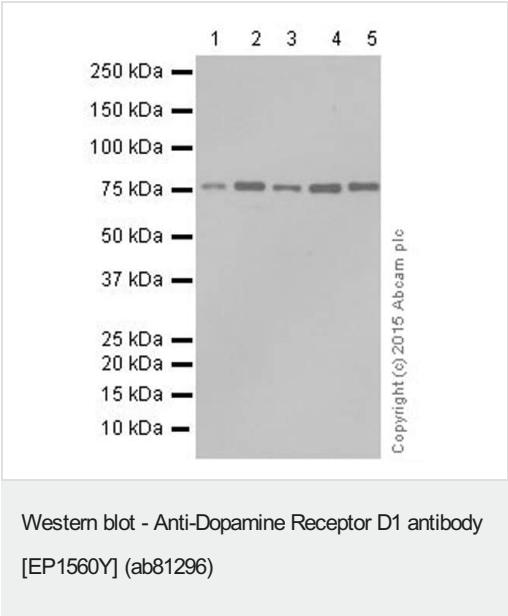
功能 Dopamine receptor whose activity is mediated by G proteins which activate adenylyl cyclase.

组织特异性 Detected in caudate, nucleus accumbens and in the olfactory tubercle.

序列相似性 Belongs to the G-protein coupled receptor 1 family.

细胞定位 Cell membrane. Endoplasmic reticulum membrane. Transport from the endoplasmic reticulum to the cell surface is regulated by interaction with DNAJC14.

图片



All lanes : Anti-Dopamine Receptor D1 antibody [EP1560Y] (ab81296) at 1/1000 dilution (purified)

- Lane 1 :** Mouse brain tissue lysate
- Lane 2 :** Mouse kidney tissue lysate
- Lane 3 :** Rat brain tissue lysate
- Lane 4 :** Rat kidney tissue lysate
- Lane 5 :** Guinea pig brain tissue lysate

Lysates/proteins at 10 µg per lane.

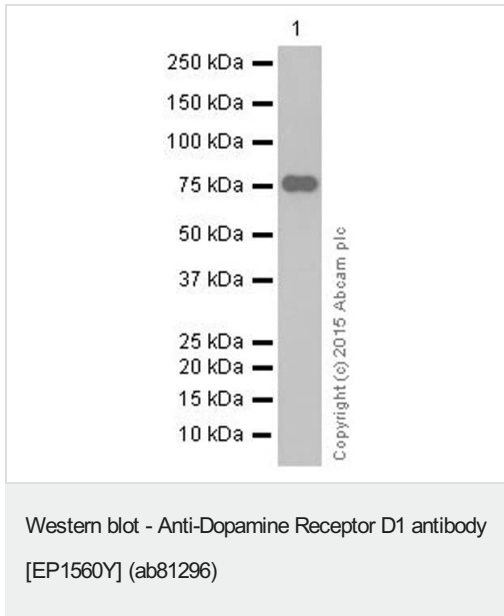
Secondary

All lanes : Rabbit monoclonal [EP1560Y] to Dopamine Receptor D1 (ab81296) at 1/20000 dilution

Predicted band size: 49 kDa

Observed band size: 75 kDa

Blocking and dilution buffer: 5% NFDM /TBST.



Anti-Dopamine Receptor D1 antibody [EP1560Y] (ab81296) at 1/5000 dilution (purified) + SH-SY5Y whole cell lysate at 10 µg

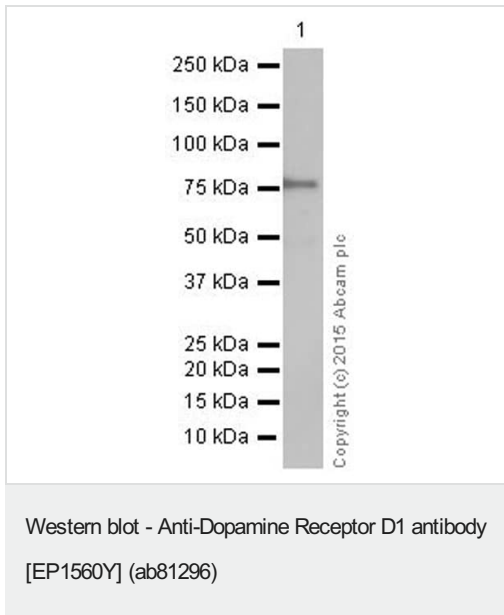
Secondary

Goat Anti-Rabbit IgG H&L (HRP) ([ab97051](#)) at 1/20000 dilution

Predicted band size: 49 kDa

Observed band size: 75 kDa

Blocking and dilution buffer: 5% NFDM /TBST.



Anti-Dopamine Receptor D1 antibody [EP1560Y] (ab81296) at 1/1000 dilution (purified) + Human fetal kidney tissue lysate at 10 µg

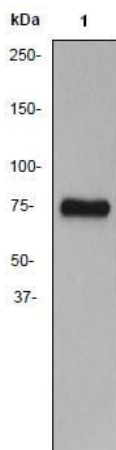
Secondary

Goat Anti-Rabbit IgG H&L (HRP) ([ab97051](#)) at 1/20000 dilution

Predicted band size: 49 kDa

Observed band size: 75 kDa

Blocking and dilution buffer: 5% NFDM /TBST.



Western blot - Anti-Dopamine Receptor D1 antibody [EP1560Y] (ab81296)

Anti-Dopamine Receptor D1 antibody [EP1560Y] (ab81296) at 1/20000 dilution (unpurified) + SH-SY5Y cell lysate at 10 µg

Secondary

HRP-conjugated goat anti-rabbit IgG at 1/2000 dilution

Predicted band size: 49 kDa

Observed band size: 75 kDa

Why choose a recombinant antibody?



Research with confidence
Consistent and reproducible results



Long-term and scalable supply
Recombinant technology



Success from the first experiment
Confirmed specificity



Ethical standards compliant
Animal-free production

Anti-Dopamine Receptor D1 antibody [EP1560Y] (ab81296)

Please note: All products are "FOR RESEARCH USE ONLY. NOT FOR USE IN DIAGNOSTIC PROCEDURES"

Our Abpromise to you: Quality guaranteed and expert technical support

- Replacement or refund for products not performing as stated on the datasheet
- Valid for 12 months from date of delivery
- Response to your inquiry within 24 hours
- We provide support in Chinese, English, French, German, Japanese and Spanish
- Extensive multi-media technical resources to help you
- We investigate all quality concerns to ensure our products perform to the highest standards

If the product does not perform as described on this datasheet, we will offer a refund or replacement. For full details of the Abpromise, please visit <https://www.abcam.cn/abpromise> or contact our technical team.

Terms and conditions

- Guarantee only valid for products bought direct from Abcam or one of our authorized distributors