

# Anti-Dopamine beta Hydroxylase antibody ab189991

★★★★★ [1 Abreviews](#) [1 References](#) [2 图像](#)

### 概述

产品名称	Anti-Dopamine beta Hydroxylase抗体
描述	山羊多克隆抗体to Dopamine beta Hydroxylase
宿主	Goat
经测试应用	适用于: WB, IHC-P
种属反应性	与反应: Human 预测可用于: Mouse, Rat, Rabbit, Horse, Chicken, Guinea pig, Hamster, Cow, Pig, Chimpanzee



免疫原	Synthetic peptide corresponding to Human Dopamine beta Hydroxylase aa 400-500 (Cysteine residue). NP_000778.3. Database link: <a href="#">P09172</a>
-----	---

[Run BLAST with](#)

[Run BLAST with](#)

阳性对照	Human Adrenal tissue; Jurkat cell lysate.
------	---

常规说明	<p>The Life Science industry has been in the grips of a reproducibility crisis for a number of years. Abcam is leading the way in addressing this with our range of recombinant monoclonal antibodies and knockout edited cell lines for gold-standard validation. Please check that this product meets your needs before purchasing.</p> <p>If you have any questions, special requirements or concerns, please send us an inquiry and/or contact our Support team ahead of purchase. Recommended alternatives for this product can be found below, along with publications, customer reviews and Q&amp;As</p>
------	---

### 性能

形式	Liquid
存放说明	Shipped at 4°C. Store at +4°C short term (1-2 weeks). Upon delivery aliquot. Store at -20°C long term. Avoid freeze / thaw cycle.
存储溶液	pH: 7.30 Preservative: 0.02% Sodium azide Constituents: 99% Tris buffered saline, 0.5% BSA
纯度	Immunogen affinity purified
克隆	多克隆
同种型	IgG

## 应用

**The Abpromise guarantee**      **Abpromise™**承诺保证使用ab189991于以下的经测试应用

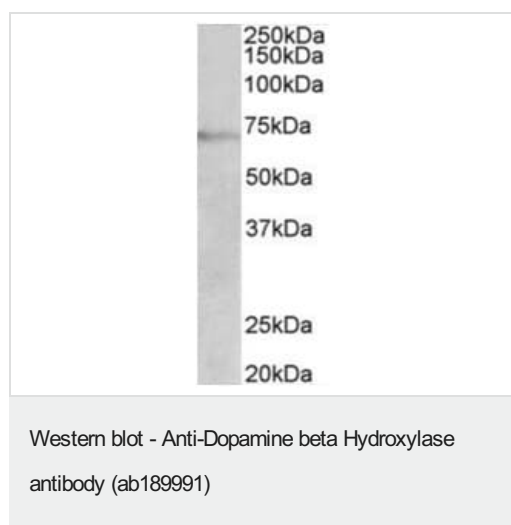
“应用说明”部分 下显示的仅为推荐的起始稀释度;实际最佳的稀释度/浓度应由使用者检定。

应用	Ab评论	说明
WB		Use a concentration of 1 - 3 µg/ml. Predicted molecular weight: 69 kDa.
IHC-P		Use a concentration of 5 µg/ml.

## 靶标

功能	Conversion of dopamine to noradrenaline.
通路	Catecholamine biosynthesis; (R)-noradrenaline biosynthesis; (R)-noradrenaline from dopamine: step 1/1.
疾病相关	Defects in DBH are the cause of dopamine beta-hydroxylase deficiency (DBH deficiency) [MIM:223360]; also known as norepinephrine deficiency or noradrenaline deficiency. This disorder is characterized by profound deficits in autonomic and cardiovascular function, but apparently only subtle signs, if any, of central nervous system dysfunction.
序列相似性	Belongs to the copper type II ascorbate-dependent monooxygenase family. Contains 1 DOMON domain.
细胞定位	Cytoplasmic vesicle > secretory vesicle lumen. Cytoplasmic vesicle > secretory vesicle > chromaffin granule lumen and Cytoplasmic vesicle > secretory vesicle membrane. Cytoplasmic vesicle > secretory vesicle > chromaffin granule membrane.

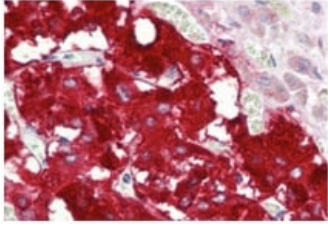
## 图片



Anti-Dopamine beta Hydroxylase antibody (ab189991) at 2 µg/ml + Jurkat cell lysate (in RIPA buffer) at 35 µg

Developed using the ECL technique.

**Predicted band size: 69 kDa**



Immunohistochemical analysis of formalin-fixed, paraffin-embedded Human adrenal tissue labeling Dopamine beta Hydroxylase with ab189991 at 5 µg/ml.

Immunohistochemistry (Formalin/PFA-fixed paraffin-embedded sections) - Anti-Dopamine beta Hydroxylase antibody (ab189991)

**Please note:** All products are "FOR RESEARCH USE ONLY. NOT FOR USE IN DIAGNOSTIC PROCEDURES"

### **Our Abpromise to you: Quality guaranteed and expert technical support**

---

- Replacement or refund for products not performing as stated on the datasheet
- Valid for 12 months from date of delivery
- Response to your inquiry within 24 hours
- We provide support in Chinese, English, French, German, Japanese and Spanish
- Extensive multi-media technical resources to help you
- We investigate all quality concerns to ensure our products perform to the highest standards

If the product does not perform as described on this datasheet, we will offer a refund or replacement. For full details of the Abpromise, please visit <https://www.abcam.cn/abpromise> or contact our technical team.

### **Terms and conditions**

---

- Guarantee only valid for products bought direct from Abcam or one of our authorized distributors