

### Anti-DOK3 antibody ab1357

**3 References**   **2 图像**

#### 概述

产品名称	Anti-DOK3抗体
描述	山羊多克隆抗体to DOK3
宿主	Goat
经测试应用	适用于: WB
种属反应性	与反应: Human 预测可用于: Rat 
免疫原	Synthetic peptide corresponding to Human DOK3 aa 450-550 (C terminal). Database link: <a href="#">NP_079148.2</a>  <a href="#">Run BLAST with</a>  <a href="#">Run BLAST with</a>
阳性对照	Human PBMC lysate.
常规说明	<p>The Life Science industry has been in the grips of a reproducibility crisis for a number of years. Abcam is leading the way in addressing this with our range of recombinant monoclonal antibodies and knockout edited cell lines for gold-standard validation. Please check that this product meets your needs before purchasing.</p> <p>If you have any questions, special requirements or concerns, please send us an inquiry and/or contact our Support team ahead of purchase. Recommended alternatives for this product can be found below, along with publications, customer reviews and Q&amp;As</p>

#### 性能

形式	Liquid
存放说明	Shipped at 4°C. Upon delivery aliquot and store at -20°C. Avoid freeze / thaw cycles.
存储溶液	pH: 7.30 Preservative: 0.02% Sodium azide Constituents: Tris buffered saline, 0.5% BSA
纯度	Immunogen affinity purified
纯化说明	Purified from goat serum by ammonium sulphate precipitation followed by antigen affinity chromatography using the immunizing peptide.
克隆	多克隆
同种型	IgG

应用

The Abpromise guarantee      **Abpromise™**承诺保证使用ab1357于以下的经测试应用

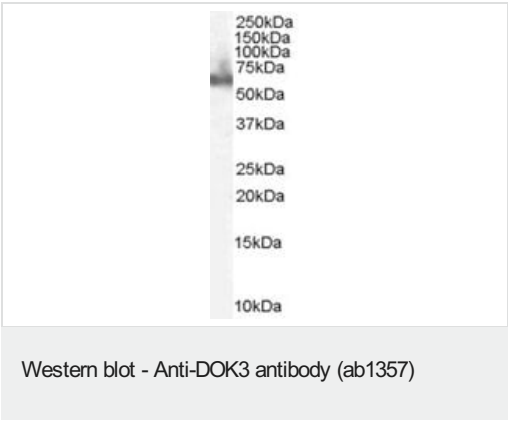
“应用说明”部分 下显示的仅为推荐的起始稀释度;实际最佳的稀释度/浓度应由使用者检定。

应用	Ab评论	说明
WB		Use a concentration of 1 - 3 µg/ml. Detects a band of approximately 60 kDa (predicted molecular weight: 57 kDa). 1 hour primary incubation is recommended for this product.

靶标

功能	DOK proteins are enzymatically inert adaptor or scaffolding proteins. They provide a docking platform for the assembly of multimolecular signaling complexes. DOK3 is a negative regulator of JNK signaling in B-cells through interaction with INPP5D/SHIP1. May modulate Abl function.
组织特异性	Expressed in spleen.
序列相似性	Belongs to the DOK family. Type A subfamily. Contains 1 IRS-type PTB domain. Contains 1 PH domain.
结构域	PTB domain mediates receptor interaction.
翻译后修饰	Constitutively tyrosine-phosphorylated. On IL2 stimulation, phosphorylated on C-terminal tyrosine residues possibly by Src kinases. Can also be phosphorylated by ABL kinase.
细胞定位	Cytoplasm. Cell membrane.

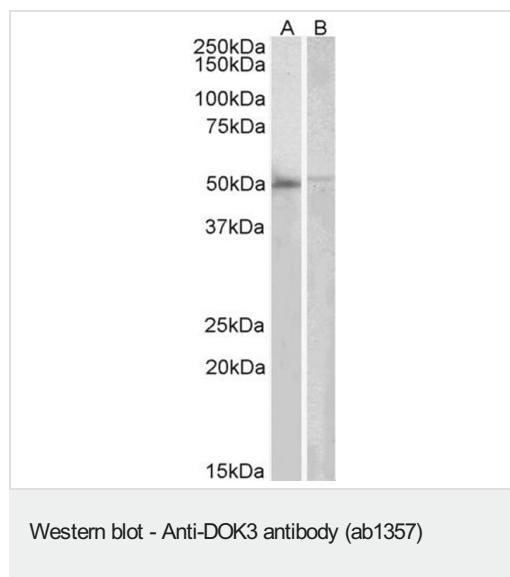
图片



Anti-DOK3 antibody (ab1357) at 0.1 µg/ml + Human PBMC lysate (RIPA buffer) at 35 µg

**Predicted band size:** 57 kDa

ab1357 staining (1µg/ml) of Human PBMC lysate (RIPA buffer, 35µg total protein per lane). Primary incubated for 1 hour. Detected by western blot using chemiluminescence. Primary incubated for 1 hour. Detected by chemiluminescence.



**All lanes :** Anti-DOK3 antibody (ab1357) at 2 µg/ml

**Lane 1 :** Human Bone Marrow lysates

**Lane 2 :** Peripheral blood leukocyte lysates

Lysates/proteins at 35 µg per lane.

**Predicted band size:** 57 kDa

**Please note:** All products are "FOR RESEARCH USE ONLY. NOT FOR USE IN DIAGNOSTIC PROCEDURES"

### Our Abpromise to you: Quality guaranteed and expert technical support

- Replacement or refund for products not performing as stated on the datasheet
- Valid for 12 months from date of delivery
- Response to your inquiry within 24 hours
- We provide support in Chinese, English, French, German, Japanese and Spanish
- Extensive multi-media technical resources to help you
- We investigate all quality concerns to ensure our products perform to the highest standards

If the product does not perform as described on this datasheet, we will offer a refund or replacement. For full details of the Abpromise, please visit <https://www.abcam.cn/abpromise> or contact our technical team.

### Terms and conditions

- Guarantee only valid for products bought direct from Abcam or one of our authorized distributors