

Anti-Diphtheria Toxin antibody [IGX3492R-3] ab219834

重组

2 图像

概述

产品名称	Anti-Diphtheria Toxin抗体[IGX3492R-3]
描述	兔单克隆抗体[IGX3492R-3] to Diphtheria Toxin
宿主	Rabbit
经测试应用	适用于: WB
种属反应性	与反应: Corynebacterium diphtheriae
免疫原	Recombinant full length protein. This information is considered to be commercially sensitive.
阳性对照	WB: Diphtheria Toxin (mutated G52 E) full length protein
常规说明	<p>This product was made using <b>synthetic libraries and phage display technology</b>.</p> <p>This antibody is a recombinant chimeric antibody. Rabbit chimeric monoclonal antibody (Human Fab/ Rabbit Fc).</p>

性能

形式	Liquid
存放说明	Shipped at 4°C. Store at +4°C short term (1-2 weeks). Upon delivery aliquot. Store at -20°C long term. Avoid freeze / thaw cycle.
存储溶液	<p>pH: 7.2</p> <p>Preservative: 0.01% Sodium azide</p> <p>Constituents: 59% PBS, 0.05% BSA, 40% Glycerol (glycerin, glycerine)</p>
纯度	Protein A purified
克隆	单克隆
克隆编号	IGX3492R-3
同种型	IgG1

应用

The Abpromise guarantee      **Abpromise™**承诺保证使用ab219834于以下的经测试应用

“应用说明”部分 下显示的仅为推荐的起始稀释度;实际最佳的稀释度/浓度应由使用者检定。

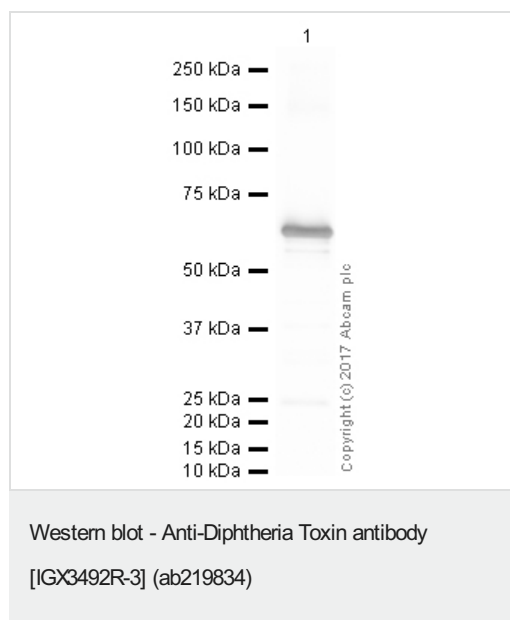
应用	Ab评论	说明
WB		Use a concentration of 0.5 µg/ml. Detects a band of approximately 60 kDa (predicted molecular weight: 58 kDa).

## 靶标

**相关性** Corynebacterium diphtheriae is a gram-positive, nonmotile bacteria found in soil and animal feces. C. diptheriae infect the epithelial cells of the upper respiratory tract from where they produce and secrete a potent toxin. This toxin is absorbed and disseminated through lymph channels and blood to the susceptible tissues of the body.

**细胞定位** Secreted

## 图片



Anti-Diphtheria Toxin antibody [IGX3492R-3] (ab219834) at 0.5 µg/ml + Native Diphtheria Toxin (mutated G52E) protein ([ab188505](#)) at 0.1 µg

### Secondary

Peroxidase AffiniPure Goat Anti-Rabbit IgG (H+L) at 1/50000 dilution

Developed using the ECL technique.

Performed under reducing conditions.

**Predicted band size:** 58 kDa

**Observed band size:** 60 kDa

**Exposure time:** 5 seconds

This blot was produced using a 4-12% Bis-tris gel under the MOPS buffer system. The gel was run at 200V for 50 minutes before being transferred onto a Nitrocellulose membrane at 30V for 70 minutes. The membrane was then blocked for an hour using 3% milk before being incubated with ab219834 overnight at 4°C. Antibody binding was detected using an anti-rabbit antibody conjugated to HRP, and visualised using ECL development solution [ab133406](#).

### Why choose a recombinant antibody?



**Research with confidence**  
Consistent and reproducible results



**Long-term and scalable supply**  
Recombinant technology



**Success from the first experiment**  
Confirmed specificity



**Ethical standards compliant**  
Animal-free production

Anti-Diphtheria Toxin antibody [IGX3492R-3]  
(ab219834)

**Please note:** All products are "FOR RESEARCH USE ONLY. NOT FOR USE IN DIAGNOSTIC PROCEDURES"

### Our Abpromise to you: Quality guaranteed and expert technical support

---

- Replacement or refund for products not performing as stated on the datasheet
- Valid for 12 months from date of delivery
- Response to your inquiry within 24 hours
- We provide support in Chinese, English, French, German, Japanese and Spanish
- Extensive multi-media technical resources to help you
- We investigate all quality concerns to ensure our products perform to the highest standards

If the product does not perform as described on this datasheet, we will offer a refund or replacement. For full details of the Abpromise, please visit <https://www.abcam.cn/abpromise> or contact our technical team.

### Terms and conditions

---

- Guarantee only valid for products bought direct from Abcam or one of our authorized distributors