


Anti-Desmoglein 2/DSG2 antibody - C-terminal ab226258

2 图像

概述

产品名称	Anti-Desmoglein 2/DSG2抗体- C-terminal
描述	兔多克隆抗体to Desmoglein 2/DSG2 - C-terminal
宿主	Rabbit
经测试应用	适用于: WB, IP
种属反应性	与反应: Human 预测可用于: Rat, Chimpanzee, Cynomolgus monkey, Rhesus monkey 
免疫原	Synthetic peptide within Human Desmoglein 2/DSG2 aa 1068-1118 (C terminal). The exact sequence is proprietary. (NP_001934.2). Database link: Q14126
阳性对照	WB: HeLa and HEK-293T whole cell lysates. IP: HeLa whole cell lysate.
常规说明	<p>The Life Science industry has been in the grips of a reproducibility crisis for a number of years. Abcam is leading the way in addressing this with our range of recombinant monoclonal antibodies and knockout edited cell lines for gold-standard validation. Please check that this product meets your needs before purchasing.</p> <p>If you have any questions, special requirements or concerns, please send us an inquiry and/or contact our Support team ahead of purchase. Recommended alternatives for this product can be found below, along with publications, customer reviews and Q&As</p>

性能

形式	Liquid
存放说明	Shipped at 4°C. Store at +4°C short term (1-2 weeks). Upon delivery aliquot. Store at -20°C long term. Avoid freeze / thaw cycle.
存储溶液	pH: 7 Preservative: 0.09% Sodium azide Constituent: Tris citrate/phosphate
纯度	pH 7 to 8 Immunogen affinity purified
纯化说明	ab226258 was affinity purified using an epitope specific to Desmoglein 2/DSG2 immobilized on solid support.

克隆

多克隆

同种型

IgG

应用

The Abpromise guarantee

Abpromise™承诺保证使用ab226258于以下的经测试应用

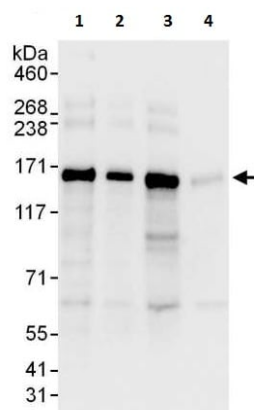
“应用说明”部分 下显示的仅为推荐的起始稀释度;实际最佳的稀释度/浓度应由使用者检定。

应用	Ab评论	说明
WB		1/2000 - 1/10000. Predicted molecular weight: 122 kDa.
IP		Use at 2-10 µg/mg of lysate.

靶标

功能	Component of intercellular desmosome junctions. Involved in the interaction of plaque proteins and intermediate filaments mediating cell-cell adhesion.
组织特异性	All of the tissues tested and carcinomas.
疾病相关	Defects in DSG2 are the cause of familial arrhythmogenic right ventricular dysplasia type 10 (ARVD10) [MIM:610193]; also known as arrhythmogenic right ventricular cardiomyopathy 10 (ARVC10). ARVD is an autosomal dominant disease characterized by partial degeneration of the myocardium of the right ventricle, electrical instability, and sudden death. It is clinically defined by electrocardiographic and angiographic criteria; pathologic findings, replacement of ventricular myocardium with fatty and fibrous elements, preferentially involve the right ventricular free wall. Genetic variations in DSG2 are the cause of susceptibility to cardiomyopathy dilated type 1BB (CMD1BB) [MIM:612877]. A disorder characterized by ventricular dilation and impaired systolic function, resulting in congestive heart failure and arrhythmia. Patients are at risk of premature death.
序列相似性	Contains 4 cadherin domains.
结构域	Calcium may be bound by the cadherin-like repeats.
细胞定位	Cell membrane. Cell junction > desmosome.

图片



Western blot - Anti-Desmoglein 2/DSG2 antibody - C-terminal (ab226258)

All lanes : Anti-Desmoglein 2/DSG2 antibody - C-terminal (ab226258) at 0.1 µg/ml

Lane 1 : HeLa (human epithelial cell line from cervix adenocarcinoma) whole cell lysate at 50 µg

Lane 2 : HeLa whole cell lysate at 15 µg

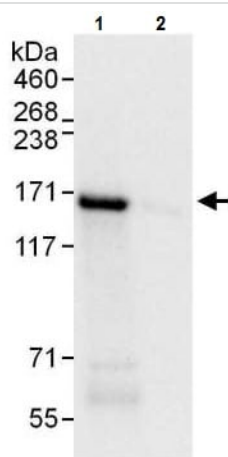
Lane 3 : HEK-293T (human epithelial cell line from embryonic kidney transformed with large T antigen) whole cell lysate at 50 µg

Lane 4 : Jurkat (human T cell leukemia cell line from peripheral blood) whole cell lysate at 50 µg

Developed using the ECL technique.

Predicted band size: 122 kDa

Exposure time: 3 seconds



Immunoprecipitation - Anti-Desmoglein 2/DSG2 antibody - C-terminal (ab226258)

Desmoglein 2/DSG2 was immunoprecipitated from HeLa (human epithelial cell line from cervix adenocarcinoma) whole cell lysate (1 mg for IP, 20% of IP loaded) with ab226258 at 6 µg/mg lysate. Western blot was performed from the immunoprecipitate using ab226258 at 1 µg/ml.

Lane 1: ab226258 IP in HeLa whole cell lysate.

Lane 2: Control IgG IP in HeLa whole cell lysate.

Detection: Chemiluminescence with exposure time of 1 second.

Please note: All products are "FOR RESEARCH USE ONLY. NOT FOR USE IN DIAGNOSTIC PROCEDURES"

Our Abpromise to you: Quality guaranteed and expert technical support

- Replacement or refund for products not performing as stated on the datasheet
- Valid for 12 months from date of delivery
- Response to your inquiry within 24 hours

- We provide support in Chinese, English, French, German, Japanese and Spanish
- Extensive multi-media technical resources to help you
- We investigate all quality concerns to ensure our products perform to the highest standards

If the product does not perform as described on this datasheet, we will offer a refund or replacement. For full details of the Abpromise, please visit <https://www.abcam.cn/abpromise> or contact our technical team.

Terms and conditions

- Guarantee only valid for products bought direct from Abcam or one of our authorized distributors