

### Anti-delta 1 Catenin/CAS antibody [EPR357(2)] ab92514

重组 RabMAb

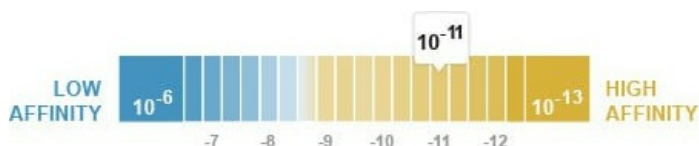
★★★★★ [10 Abreviews](#) [17 References](#) [8 图像](#)

#### 概述

产品名称	Anti-delta 1 Catenin/CAS抗体[EPR357(2)]
描述	兔单克隆抗体[EPR357(2)] to delta 1 Catenin/CAS
宿主	Rabbit
特异性	The mouse recommendation is based on the WB results. We do not guarantee IHC-P for mouse.
经测试应用	<b>适用于:</b> WB, IHC-P, Flow Cyt (Intra), ICC/IF
种属反应性	<b>与反应:</b> Mouse, Human
免疫原	Synthetic peptide within Human delta 1 Catenin/CAS aa 950 to the C-terminus. The exact sequence is proprietary.
阳性对照	WB: HeLa, HEK-293T, RAW264.7, C2C12 and A431 cell lysates. IHC-P: Human breast carcinoma, ovarian cancer and colonic adenocarcinoma tissues. ICC/IF: A431 cells. Flow Cyt (intra): A431 cells.
常规说明	<p>This product is a recombinant monoclonal antibody, which offers several advantages including:</p> <ul style="list-style-type: none"> <li>- High batch-to-batch consistency and reproducibility</li> <li>- Improved sensitivity and specificity</li> <li>- Long-term security of supply</li> <li>- Animal-free production</li> </ul> <p>For more information <a href="#">see here</a>.</p> <p>Our RabMAb<sup>®</sup> technology is a patented hybridoma-based technology for making rabbit monoclonal antibodies. For details on our patents, please refer to <a href="#">RabMAb<sup>®</sup> patents</a>.</p>

#### 性能

形式	Liquid
存放说明	Shipped at 4°C. Store at -20°C. Stable for 12 months at -20°C.
解离常数 (K <sub>D</sub> )	K <sub>D</sub> = 7.40 x 10 <sup>-11</sup> M



[Learn more about K<sub>D</sub>](#)

存储溶液	pH: 7.20 Preservative: 0.01% Sodium azide Constituents: 59% PBS, 40% Glycerol (glycerin, glycerine), 0.05% BSA
纯度	Protein A purified
克隆	单克隆
克隆编号	EPR357(2)
同种型	IgG

应用

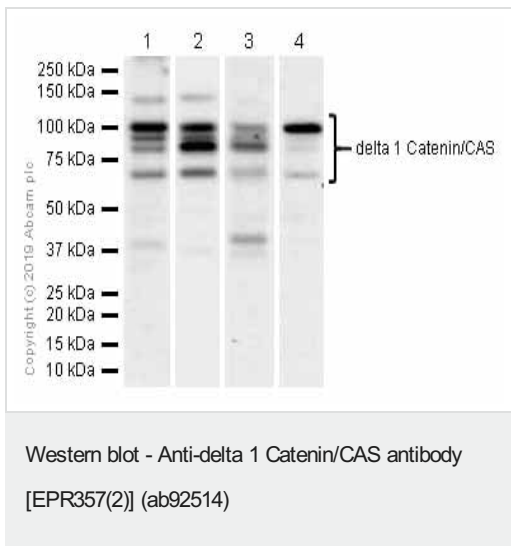
**The Abpromise guarantee**      **Abpromise™** 承诺保证使用 ab92514 于以下的经测试应用

“应用说明”部分 下显示的仅为推荐的起始稀释度; 实际最佳的稀释度/浓度应由使用者检定。

应用	Ab 评论	说明
WB	★★★★★ (6)	1/1000 - 1/10000. Predicted molecular weight: 108 kDa.
IHC-P		1/50. Perform heat mediated antigen retrieval with Tris/EDTA buffer pH 9.0 before commencing with IHC staining protocol. Antigen retrieval and the use of an HRP/AP polymerized secondary antibody is recommended for enhanced staining. See <a href="#">IHC antigen retrieval protocols</a> . <b>For unpurified use at 1/100 - 1/250.</b>
Flow Cyt (Intra)		1/20.
ICC/IF	★★★★★ (3)	1/100 - 1/250.

靶标

功能	Binds to and inhibits the transcriptional repressor ZBTB33, which may lead to activation of target genes of the Wnt signaling pathway (By similarity). May associate with and regulate the cell adhesion properties of both C- and E-cadherins. Implicated both in cell transformation by SRC and in ligand-induced receptor signaling through the EGF, PDGF, CSF-1 and ERBB2 receptors. Promotes GLIS2 C-terminal cleavage.
组织特异性	Expressed in vascular endothelium.
序列相似性	Belongs to the beta-catenin family. Contains 10 ARM repeats.
结构域	A possible nuclear localization signal exists in all isoforms where Asp-626--631-Arg are deleted.
翻译后修饰	Phosphorylated by protein-tyrosine kinases. Dephosphorylated by PTPRJ.
细胞定位	Cytoplasm. Nucleus. Cell membrane. Interaction with GLIS2 promotes nuclear translocation (By similarity). NANOS1 induces its translocation from sites of cell-cell contact to the cytoplasm.



**All lanes :** Anti-delta 1 Catenin/CAS antibody [EPR357(2)] (ab92514) at 1/1000 dilution (Purified)

**Lane 1 :** HeLa (Human cervix adenocarcinoma epithelial cell) whole cell lysates

**Lane 2 :** HEK-293 (Human epithelial cell line from embryonic kidney) whole cell lysates

**Lane 3 :** RAW264.7 (Mouse Abelson murine leukemia virus-induced tumor macrophage) whole cell lysates

**Lane 4 :** C2C12 (Mouse myoblasts myoblast) whole cell lysates

Lysates/proteins at 15 µg per lane.

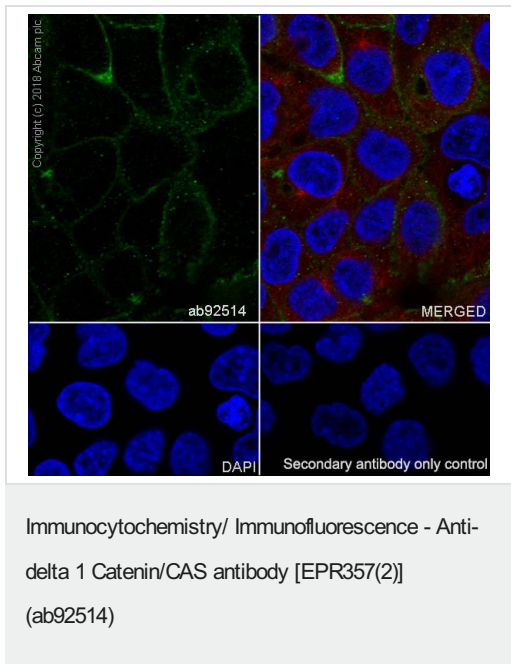
### Secondary

**All lanes :** Goat Anti-Rabbit IgG H&L (HRP) (**ab97051**) at 1/20000 dilution

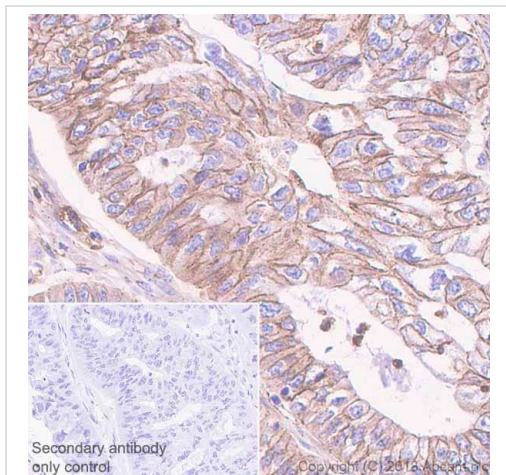
**Predicted band size:** 108 kDa

**Observed band size:** 70-120 kDa

The multiple bands are isoforms caused by alternatively splicing as was described in PMID 9653641 and are consistent with what has been described in PMID 15077190.

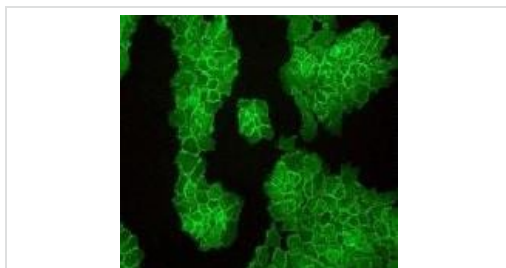


Immunocytochemistry/ Immunofluorescence analysis of A431 (Human epidermoid carcinoma epithelial cell) cells labeling delta 1 Catenin/CAS with purified ab92514 at 1:50 dilution (2.2 µg/ml). Cells were fixed in 4% Paraformaldehyde and permeabilized with 0.1% tritonX-100. Cells were counterstained with **ab195889** Anti-alpha Tubulin antibody [DM1A] - Microtubule Marker (Alexa Fluor® 594) 1:200 (2.5 µg/ml). Goat anti rabbit IgG (Alexa Fluor® 488, **ab150077**) was used as the secondary antibody at 1:1000 (2 µg/ml) dilution. DAPI (blue) was used as nuclear counterstain. PBS instead of the primary antibody was used as the secondary antibody only control.



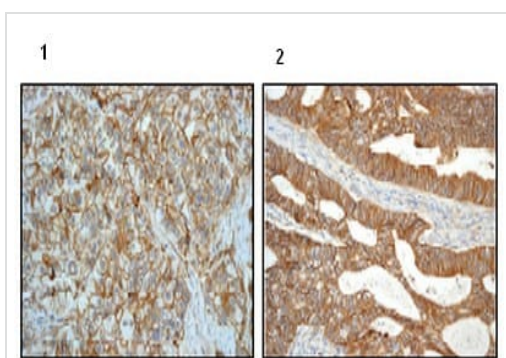
Immunohistochemistry (Formalin/PFA-fixed paraffin-embedded sections) - Anti-delta 1 Catenin/CAS antibody [EPR357(2)] (ab92514)

Immunohistochemistry (Formalin/PFA-fixed paraffin-embedded sections) analysis of human ovarian cancer tissue sections labeling delta 1 Catenin/CAS with purified ab92514 at 1:50 dilution (1.84 µg/ml). Heat mediated antigen retrieval was performed using **ab93684** (Tris/EDTA buffer, pH 9.0). ImmunoHistoProbe one step HRP Polymer (ready to use) was used as the secondary antibody. Negative control: PBS instead of the primary antibody. Hematoxylin was used as a counterstain.



Immunocytochemistry/ Immunofluorescence - Anti-delta 1 Catenin/CAS antibody [EPR357(2)] (ab92514)

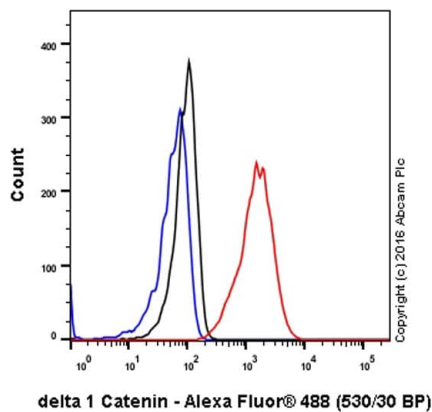
A431 (Human epidermoid carcinoma cell line) cells stained for delta 1 Catenin/CAS using unpurified ab92514 at a dilution of 1/100 in ICC/IF.



Immunohistochemistry (Formalin/PFA-fixed paraffin-embedded sections) - Anti-delta 1 Catenin/CAS antibody [EPR357(2)] (ab92514)

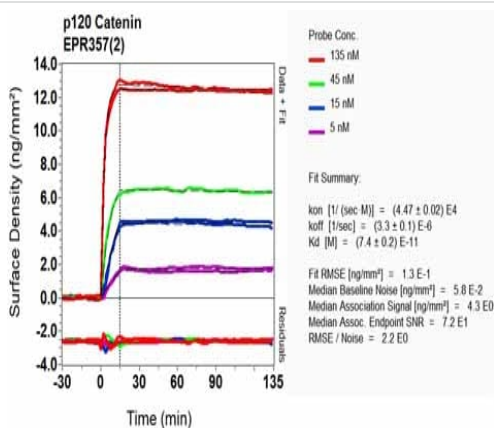
Paraffin embedded human breast carcinoma tissue (panel 1) and human colonic adenocarcinoma tissue (panel 2) labeled with unpurified ab92514 at 1/100 dilution.

Heat mediated antigen retrieval was performed with Tris/EDTA buffer pH 9.0 before commencing with IHC staining protocol.



Flow Cytometry (Intracellular) - Anti-delta 1 Catenin/CAS antibody [EPR357(2)] (ab92514)

Intracellular Flow Cytometry analysis of A431 (human epidermoid carcinoma) cells labeling delta 1 Catenin/CAS with unpurified ab92514 at 1/20 dilution (10µg/ml) (Red). Cells were fixed with 4% paraformaldehyde and permeabilized with 90% methanol. A Goat anti rabbit IgG (Alexa Fluor® 488) (1/2000 dilution) was used as the secondary antibody. Rabbit monoclonal IgG (Black) was used as the isotype control, cells without incubation with primary antibody and secondary antibody (Blue) was used as the unlabeled control.



BI-RD Scanning - Anti-delta 1 Catenin/CAS antibody [EPR357(2)] (ab92514)

Equilibrium dissociation constant ( $K_D$ )

Learn more about  $K_D$

[Click here to learn more about  \$K\_D\$](#)

### Why choose a recombinant antibody?



**Research with confidence**  
Consistent and reproducible results



**Long-term and scalable supply**  
Recombinant technology



**Success from the first experiment**  
Confirmed specificity



**Ethical standards compliant**  
Animal-free production

Anti-delta 1 Catenin/CAS antibody [EPR357(2)]  
(ab92514)

**Please note:** All products are "FOR RESEARCH USE ONLY. NOT FOR USE IN DIAGNOSTIC PROCEDURES"

### Our Abpromise to you: Quality guaranteed and expert technical support

---

- Replacement or refund for products not performing as stated on the datasheet
- Valid for 12 months from date of delivery
- Response to your inquiry within 24 hours
- We provide support in Chinese, English, French, German, Japanese and Spanish
- Extensive multi-media technical resources to help you
- We investigate all quality concerns to ensure our products perform to the highest standards

If the product does not perform as described on this datasheet, we will offer a refund or replacement. For full details of the Abpromise, please visit <https://www.abcam.cn/abpromise> or contact our technical team.

### Terms and conditions

---

- Guarantee only valid for products bought direct from Abcam or one of our authorized distributors