

Anti-DDX56/DDX21 antibody ab97648

[1 References](#) [4 图像](#)

概述

产品名称	Anti-DDX56/DDX21抗体
描述	兔多克隆抗体to DDX56/DDX21
宿主	Rabbit
经测试应用	适用于: IHC-P, WB, ICC/IF
种属反应性	与反应: Human 预测可用于: Mouse, Rat, Cow 
免疫原	Recombinant fragment corresponding to Human DDX56/DDX21 aa 251-403. (AAH01235)
阳性对照	A549, HeLa, HepG2 and HCT116 cell lines; MCF7 xenograft ICC/IF: HeLa cells.
常规说明	<p>The Life Science industry has been in the grips of a reproducibility crisis for a number of years. Abcam is leading the way in addressing this with our range of recombinant monoclonal antibodies and knockout edited cell lines for gold-standard validation. Please check that this product meets your needs before purchasing.</p> <p>If you have any questions, special requirements or concerns, please send us an inquiry and/or contact our Support team ahead of purchase. Recommended alternatives for this product can be found below, along with publications, customer reviews and Q&As</p>

性能

形式	Liquid
存放说明	Shipped at 4°C. Upon delivery aliquot. Store at -20°C or -80°C. Avoid freeze / thaw cycle.
存储溶液	pH: 7.00 Preservative: 0.01% Thimerosal (merthiolate) Constituents: 1.21% Tris, 0.75% Glycine, 20% Glycerol (glycerin, glycerine)
纯度	Immunogen affinity purified
克隆	多克隆
同种型	IgG

应用

The Abpromise guarantee

Abpromise™ 承诺保证使用ab97648于以下的经测试应用

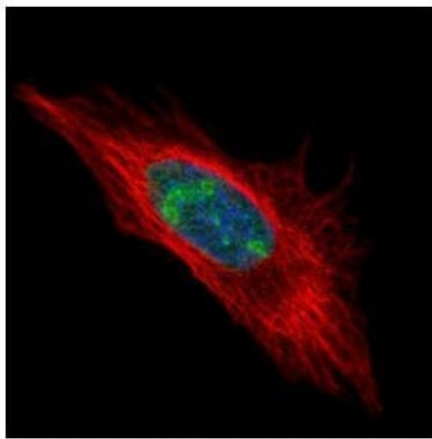
“应用说明”部分 下显示的仅为推荐的起始稀释度;实际最佳的稀释度/浓度应由使用者检定。

应用	Ab评论	说明
IHC-P		1/100 - 1/500.
WB		1/500 - 1/3000. Predicted molecular weight: 62 kDa.
ICC/IF		1/100 - 1/500.

靶标

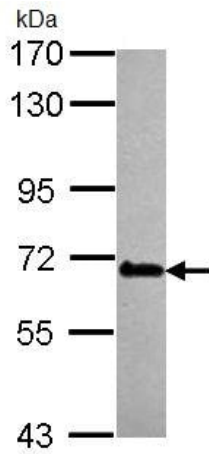
功能	May play a role in later stages of the processing of the pre-ribosomal particles leading to mature 60S ribosomal subunits. Has intrinsic ATPase activity.
组织特异性	Detected in heart, brain, liver, pancreas, placenta and lung.
序列相似性	Belongs to the DEAD box helicase family. DDX56/DBP9 subfamily. Contains 1 helicase ATP-binding domain. Contains 1 helicase C-terminal domain.
翻译后修饰	Phosphorylated upon DNA damage, probably by ATM or ATR.
细胞定位	Nucleus > nucleolus.

图片



Paraformaldehyde-fixed HeLa cells stained for DDX56/DDX21 using ab97648 at 1/500 dilution in ICC/IF (green). Alpha tubulin filaments are detected with an ant-tubulin antibody (red).

Immunocytochemistry/ Immunofluorescence - Anti-DDX56/DDX21 antibody (ab97648)

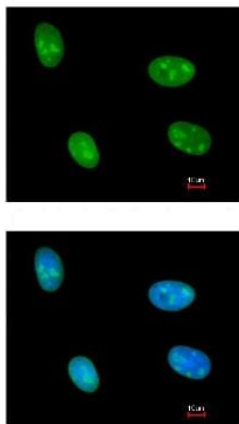


Western blot - Anti-DDX56/DDX21 antibody (ab97648)

Anti-DDX56/DDX21 antibody (ab97648) at 1/1000 dilution + HeLa whole cell lysate at 30 μ g

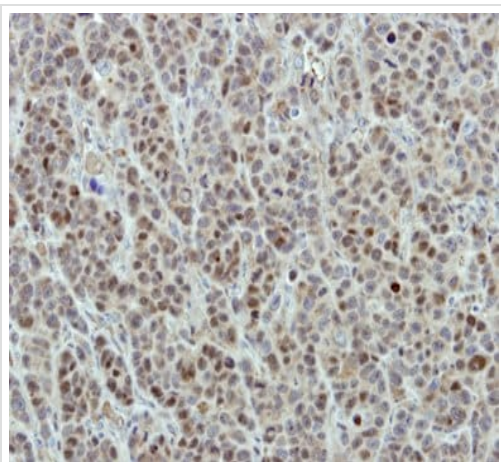
Predicted band size: 62 kDa

7.5% SDS PAGE



Immunocytochemistry/ Immunofluorescence - Anti-DDX56/DDX21 antibody (ab97648)

ab97648, at a 1/200 dilution, staining DDX56/DDX21 in paraformaldehyde fixed HeLa cells by Immunofluorescence. The lower image is costained with Hoechst 33342.



ab97648, at a 1/500 dilution, staining DDX56/DDX21 in formalin fixed, paraffin embedded MCF7 xenograft by Immunohistochemistry.

Immunohistochemistry (Formalin/PFA-fixed paraffin-embedded sections) - Anti-DDX56/DDX21 antibody (ab97648)

Please note: All products are "FOR RESEARCH USE ONLY. NOT FOR USE IN DIAGNOSTIC PROCEDURES"

Our Abpromise to you: Quality guaranteed and expert technical support

- Replacement or refund for products not performing as stated on the datasheet
- Valid for 12 months from date of delivery
- Response to your inquiry within 24 hours

- We provide support in Chinese, English, French, German, Japanese and Spanish
- Extensive multi-media technical resources to help you
- We investigate all quality concerns to ensure our products perform to the highest standards

If the product does not perform as described on this datasheet, we will offer a refund or replacement. For full details of the Abpromise, please visit <https://www.abcam.cn/abpromise> or contact our technical team.

Terms and conditions

- Guarantee only valid for products bought direct from Abcam or one of our authorized distributors