

Anti-Cytosolic Phospholipase A2 antibody ab58375

★★★★★ [3 Abreviews](#) [20 References](#) [3 图像](#)

概述

产品名称	Anti-Cytosolic Phospholipase A2抗体
描述	兔多克隆抗体to Cytosolic Phospholipase A2
宿主	Rabbit
经测试应用	适用于: WB, IHC-P
种属反应性	与反应: Human
免疫原	Synthetic peptide within Human Cytosolic Phospholipase A2 aa 450-550. The exact immunogen sequence used to generate this antibody is proprietary information. If additional detail on the immunogen is needed to determine the suitability of the antibody for your needs, please contact our Scientific Support team to discuss your requirements. Database link: P47712

 [Run BLAST with](#)

 [Run BLAST with](#)

常规说明

The Life Science industry has been in the grips of a reproducibility crisis for a number of years. Abcam is leading the way in addressing this with our range of recombinant monoclonal antibodies and knockout edited cell lines for gold-standard validation. Please check that this product meets your needs before purchasing.

If you have any questions, special requirements or concerns, please send us an inquiry and/or contact our Support team ahead of purchase. Recommended alternatives for this product can be found below, along with publications, customer reviews and Q&As

性能

形式	Liquid
存放说明	Shipped at 4°C. Store at -20°C. Stable for 12 months at -20°C.
存储溶液	pH: 7.40 Preservative: 0.02% Sodium azide Constituents: PBS, 50% Glycerol (glycerin, glycerine), 0.87% Sodium chloride
纯度	Without Mg+2 and Ca+2 Immunogen affinity purified
纯化说明	ab58375 was affinity purified from rabbit antiserum affinity chromatography using epitope-specific immunogen.

克隆

多克隆

同种型

IgG

应用

The Abpromise guarantee **Abpromise™**承诺保证使用ab58375于以下的经测试应用

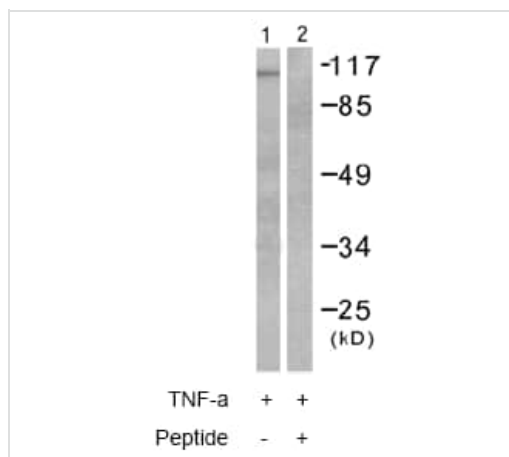
“应用说明”部分 下显示的仅为推荐的起始稀释度;实际最佳的稀释度/浓度应由使用者检定。

应用	Ab评论	说明
WB	★★★★★ (1)	1/500 - 1/1000. Detects a band of approximately 110 kDa (predicted molecular weight: 85 kDa).
IHC-P	★★★★★ (1)	Use at an assay dependent concentration.

靶标

功能	Selectively hydrolyzes arachidonyl phospholipids in the sn-2 position releasing arachidonic acid. Together with its lysophospholipid activity, it is implicated in the initiation of the inflammatory response.
组织特异性	Expressed in various tissues such as macrophages, platelets, neutrophils, fibroblasts and lung endothelium.
序列相似性	Contains 1 C2 domain. Contains 1 PLA2c domain.
结构域	The N-terminal C2 domain associates with lipid membranes upon calcium binding. It modulates enzyme activity by presenting the active site to its substrate in response to elevations of cytosolic Ca(2+).
翻译后修饰	Activated by phosphorylation at both Ser-505 and Ser-727.
细胞定位	Cytoplasm. Cytoplasmic vesicle. Translocates to membrane vesicles in a calcium-dependent fashion.

图片



Western blot - Anti-Cytosolic Phospholipase A2 antibody (ab58375)

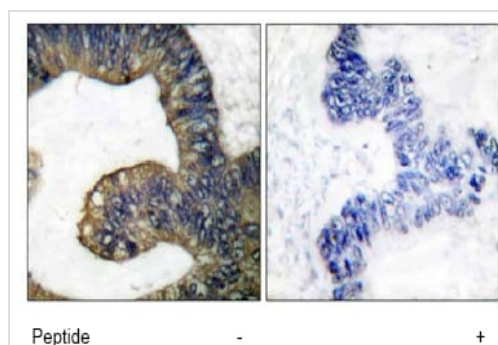
All lanes : Anti-Cytosolic Phospholipase A2 antibody (ab58375) at 1/500 dilution

Lane 1 : HeLa cell extracts treated with TNF alpha (20ng/ml, 30mins)

Lane 2 : HeLa cell extracts treated with TNF alpha (20ng/ml, 30mins) with immunising peptide

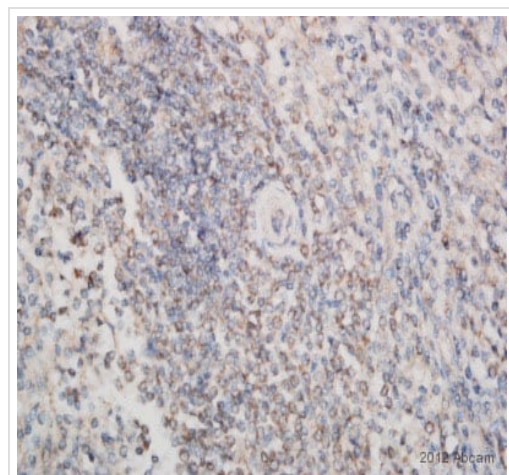
Predicted band size: 85 kDa

Observed band size: 110 kDa



Immunohistochemistry (Formalin/PFA-fixed paraffin-embedded sections) - Anti-Cytosolic Phospholipase A2 antibody (ab58375)

ab58375 at 1/50-1/100 dilution staining Cytosolic Phospholipase A2 in human colon carcinoma by Immunohistochemistry, Paraffin embedded tissue, in the absence or presence of the immunising peptide.



Immunohistochemistry (Formalin/PFA-fixed paraffin-embedded sections) - Anti-Cytosolic Phospholipase A2 antibody (ab58375)

This image is courtesy of an anonymous Abreview

Immunohistochemical analysis of Human spleen tissue, staining Phospholipase A2 with ab58375.

Tissue was fixed with formaldehyde and blocked with blocking solution for 10 minutes at 37°C; antigen retrieval was by heat mediation in a cell conditioner. Samples were incubated with primary antibody (undiluted) for 1 hour at 37°C. A biotinylated-conjugated goat anti-rabbit polyclonal IgG was used as the secondary antibody.

Please note: All products are "FOR RESEARCH USE ONLY. NOT FOR USE IN DIAGNOSTIC PROCEDURES"

Our Abpromise to you: Quality guaranteed and expert technical support

- Replacement or refund for products not performing as stated on the datasheet
- Valid for 12 months from date of delivery
- Response to your inquiry within 24 hours

- We provide support in Chinese, English, French, German, Japanese and Spanish
- Extensive multi-media technical resources to help you
- We investigate all quality concerns to ensure our products perform to the highest standards

If the product does not perform as described on this datasheet, we will offer a refund or replacement. For full details of the Abpromise, please visit <https://www.abcam.cn/abpromise> or contact our technical team.

Terms and conditions

- Guarantee only valid for products bought direct from Abcam or one of our authorized distributors