


Anti-Cytokeratin 7 antibody [RCK105] - Cytoskeleton Marker ab9021

★★★★★ [16 Abreviews](#) [93 References](#) [9 图像](#)

概述

产品名称	Anti-Cytokeratin 7 抗体[RCK105] - Cytoskeleton Marker
描述	小鼠单克隆抗体[RCK105] to Cytokeratin 7 - Cytoskeleton Marker
宿主	Mouse
特异性	This antibody reacts exclusively with cytokeratin 7 which is present in a subgroup of glandular epithelia and their tumors, as well as transitional epithelium and transitional carcinoma.
经测试应用	适用于: IHC-Fr, IHC-P
种属反应性	与反应: Human, Pig 预测可用于: Rat, Goat, Hamster, Cat, Dog, Zebrafish 
免疫原	Full length native protein (purified) corresponding to Human Cytokeratin 7. BALB/c mouse immunized with cytokeratins from the human bladder carcinoma cell line T24.
阳性对照	IHC-P: Human liver tissue, mouse ovary and bladder tissue IHC-Fr: Human liver, urinary bladder tissue, Pig liver and skin tissue
常规说明	<p>The Life Science industry has been in the grips of a reproducibility crisis for a number of years. Abcam is leading the way in addressing this with our range of recombinant monoclonal antibodies and knockout edited cell lines for gold-standard validation. Please check that this product meets your needs before purchasing.</p> <p>If you have any questions, special requirements or concerns, please send us an inquiry and/or contact our Support team ahead of purchase. Recommended alternatives for this product can be found below, along with publications, customer reviews and Q&As</p>

性能

形式	Liquid
存放说明	Shipped at 4°C. Store at +4°C short term (1-2 weeks). Upon delivery aliquot. Store at -20°C or -80°C. Avoid freeze / thaw cycle.
存储溶液	Preservative: 0.09% Sodium azide Constituent: PBS
纯度	Protein G purified
克隆	单克隆

克隆编号	RCK105
骨髓瘤	Sp2/0-Ag14
同种型	IgG1

应用

The Abpromise guarantee **Abpromise™**承诺保证使用ab9021于以下的经测试应用

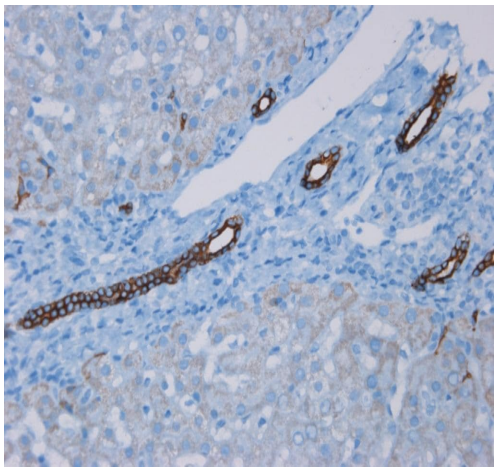
“应用说明”部分 下显示的仅为推荐的起始稀释度;实际最佳的稀释度/浓度应由使用者检定。

应用	Ab评论	说明
IHC-Fr	★★★★★ (2)	1/100 - 1/500.
IHC-P	★★★★★ (5)	1/1000.

靶标

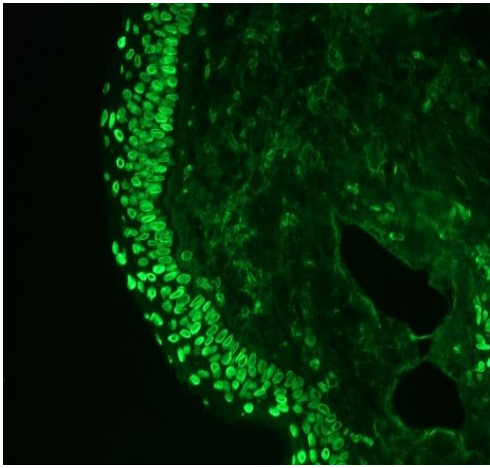
功能	Blocks interferon-dependent interphase and stimulates DNA synthesis in cells. Involved in the translational regulation of the human papillomavirus type 16 E7 mRNA (HPV16 E7).
组织特异性	Expressed in cultured epidermal, bronchial and mesothelial cells but absent in colon, ectocervix and liver. Observed throughout the glandular cells in the junction between stomach and esophagus but is absent in the esophagus.
序列相似性	Belongs to the intermediate filament family.
翻译后修饰	Arg-20 is dimethylated, probably to asymmetric dimethylarginine.
细胞定位	Cytoplasm.

图片



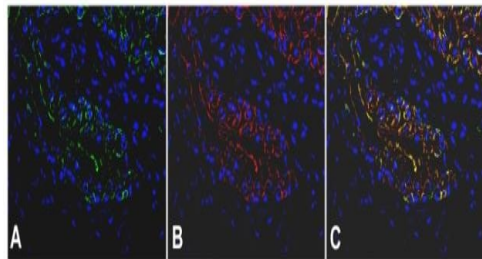
Immunohistochemistry (Formalin/PFA-fixed paraffin-embedded sections) - Anti-Cytokeratin 7 antibody [RCK105] - Cytoskeleton Marker (ab9021)

Immunohistochemistry analysis of formalin fixed, paraffin embedded sections of human liver tissue labeling Cytokeratin 7 with ab9021 at 1/100; showing positive staining in the epithelial cells lining the bile ducts and no reactivity in hepatocytes or connective tissue.



Immunohistochemistry (Frozen sections) - Anti-Cytokeratin 7 antibody [RCK105] - Cytoskeleton Marker (ab9021)

ab9021 staining normal pig skin tissue section (frozen), staining epithelial cells using ab9021 at 1/500.



Immunohistochemistry (Formalin/PFA-fixed paraffin-embedded sections) - Anti-Cytokeratin 7 antibody [RCK105] - Cytoskeleton Marker (ab9021)

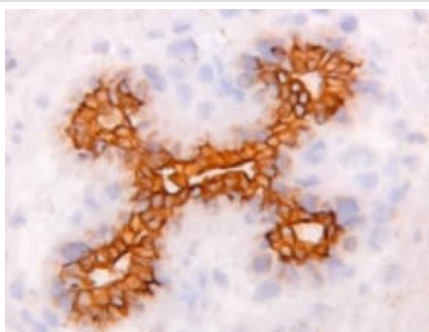
Yang, X. et al PLoS One. 2013 Sep 18;8(9):e74809. doi: 10.1371/journal.pone.0074809. eCollection 2013
Reproduced under the Creative Commons license
<http://creativecommons.org/licenses/by/4.0/>

Immunofluorescent staining of β -galactosidase and cytokeratin expression of urinary bladder after intravesical treatment with Adeno-Cre

Formalin-fixed, paraffin-embedded mouse bladder tissue stained for β -galactosidase (green, A) or Cytokeratin 7 (red, B). Panel C shows the colocalization of β -galactosidase and Cytokeratin 7. The nuclear counterstain is DAPI (blue).

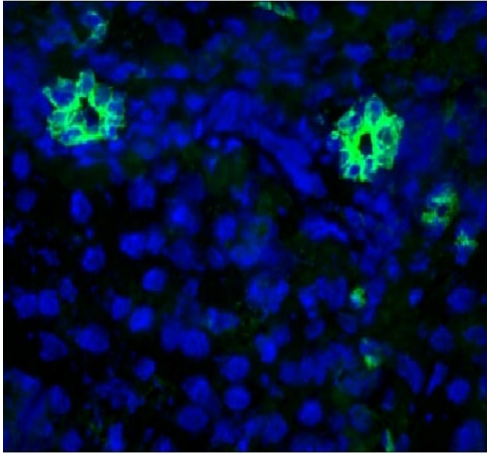
Cytokeratin 7 was detected using ab9021.

(After Figure 3 of Yang et al)



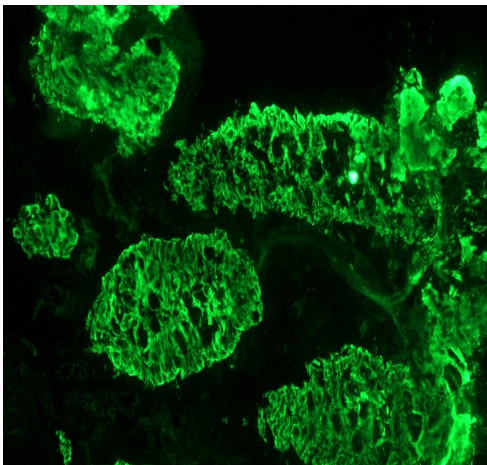
Immunohistochemistry (Frozen sections) - Anti-Cytokeratin 7 antibody [RCK105] - Cytoskeleton Marker (ab9021)

ab9021 staining normal breast tissue section (frozen), fixated in Methanol, staining epithelial cells. These pictures are part of the review submitted by Rene Villadsen.



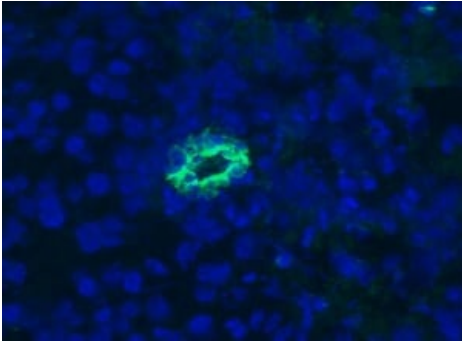
Immunohistochemistry (Frozen sections) - Anti-Cytokeratin 7 antibody [RCK105] - Cytoskeleton Marker (ab9021)

Immunohistochemistry analysis of frozen sections of human liver labeling Cytokeratin 7 with ab9021 at 1/500; showing positive staining in the epithelial cells lining the bile ducts and no reactivity in hepatocytes or connective tissue.



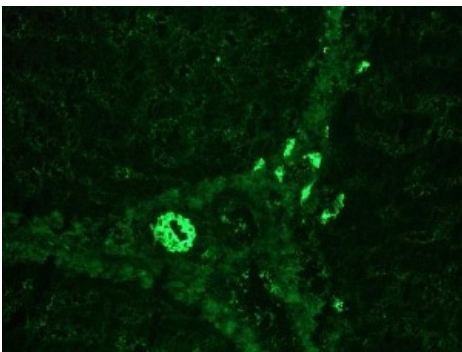
Immunohistochemistry (Frozen sections) - Anti-Cytokeratin 7 antibody [RCK105] - Cytoskeleton Marker (ab9021)

Immunohistochemistry analysis of frozen sections of human urinary bladder labeling Cytokeratin 7 with ab9021 at 1/500; showing positive staining in the epithelial cells and no reactivity in connective tissue.



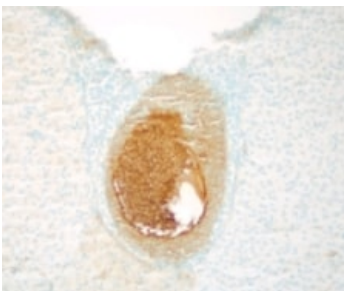
Immunohistochemistry on frozen sections of human liver, only bile duct epithelium positive; no reaction in hepatocytes

Immunohistochemistry (Frozen sections) - Anti-Cytokeratin 7 antibody [RCK105] - Cytoskeleton Marker (ab9021)



Immunohistochemistry on frozen sections of swine liver, only bile duct epithelium positive; no reaction in hepatocytes

Immunohistochemistry (Frozen sections) - Anti-Cytokeratin 7 antibody [RCK105] - Cytoskeleton Marker (ab9021)



Formalin fixed paraffin embedded mouse ovary tissue. Ab9021 used at 1:1000 incubated with overnight incubation with a biotinylated secondary and peroxidase/DAB detection.

Immunohistochemistry (Formalin/PFA-fixed paraffin-embedded sections) - Anti-Cytokeratin 7 antibody [RCK105] - Cytoskeleton Marker (ab9021)

This image is courtesy of an Abreview submitted by Todd Gocken
These pictures are part of the review submitted by Todd Gocken

Please note: All products are "FOR RESEARCH USE ONLY. NOT FOR USE IN DIAGNOSTIC PROCEDURES"

Our Abpromise to you: Quality guaranteed and expert technical support

- Replacement or refund for products not performing as stated on the datasheet
- Valid for 12 months from date of delivery
- Response to your inquiry within 24 hours
- We provide support in Chinese, English, French, German, Japanese and Spanish
- Extensive multi-media technical resources to help you
- We investigate all quality concerns to ensure our products perform to the highest standards

If the product does not perform as described on this datasheet, we will offer a refund or replacement. For full details of the Abpromise, please visit <https://www.abcam.cn/abpromise> or contact our technical team.

Terms and conditions

- Guarantee only valid for products bought direct from Abcam or one of our authorized distributors