

### Anti-Cytokeratin 20 antibody [Ks20.8] ab854

★★★★★ [4 Abreviews](#) [4 References](#) [4 图像](#)

#### 概述

产品名称	Anti-Cytokeratin 20抗体[Ks20.8]
描述	小鼠单克隆抗体[Ks20.8] to Cytokeratin 20
宿主	Mouse
特异性	This antibody is highly specific to cytokeratin 20 and shows no cross-reaction with other intermediate filament proteins. It is essentially non-reactive in squamous cell carcinomas and adenocarcinomas of the breast, lung, and endometrium, non-mucinous tumors of the ovary and small cell carcinomas.
经测试应用	<b>适用于:</b> Flow Cyt, IHC-P, ICC/IF
种属反应性	<b>与反应:</b> Human
免疫原	Tissue, cells or virus corresponding to Cytokeratin 20. Electrophoretically purified Keratin K20 from Human intestinal mucosa.
阳性对照	Colon carcinoma. IF/ICC: Jeg3 cell line.
常规说明	<p>The Life Science industry has been in the grips of a reproducibility crisis for a number of years. Abcam is leading the way in addressing this with our range of recombinant monoclonal antibodies and knockout edited cell lines for gold-standard validation. Please check that this product meets your needs before purchasing.</p> <p>If you have any questions, special requirements or concerns, please send us an inquiry and/or contact our Support team ahead of purchase. Recommended alternatives for this product can be found below, along with publications, customer reviews and Q&amp;As</p>

#### 性能

形式	Liquid
存放说明	Shipped at 4°C. Upon delivery aliquot and store at -20°C. Avoid freeze / thaw cycles.
存储溶液	<p>pH: 7.30</p> <p>Preservative: 0.1% Sodium azide</p> <p>Constituents: PBS, Carrier protein</p>
纯度	Van Gogh Yellow Diluent
克隆	Tissue culture supernatant
克隆	单克隆

克隆编号	Ks20.8
骨髓瘤	unknown
同种型	IgG2a
轻链类型	unknown

应用

The Abpromise guarantee      **Abpromise™**承诺保证使用ab854于以下的经测试应用

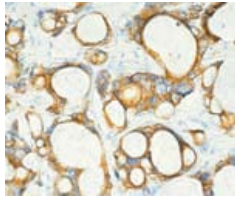
“应用说明”部分 下显示的仅为推荐的起始稀释度;实际最佳的稀释度/浓度应由使用者检定。

应用	Ab评论	说明
Flow Cyt		1/50. (Also see PMID: 20332776) <b>ab170191</b> - Mouse monoclonal IgG2a, is suitable for use as an isotype control with this antibody.
IHC-P	★★★★★ (1)	Use at an assay dependent concentration. This antibody may be diluted to a titer of 1:50-1:100 in an ABC method.We suggest an incubation period of 30-60 minutes at room temperature.
ICC/IF	★★★★★ (1)	1/200.

靶标

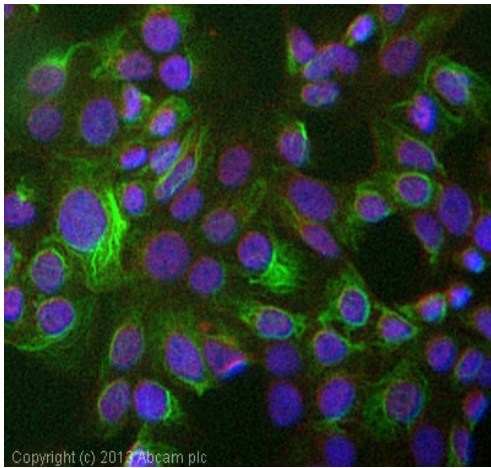
功能	Plays a significant role in maintaining keratin filament organization in intestinal epithelia. When phosphorylated, plays a role in the secretion of mucin in the small intestine.
组织特异性	Expressed predominantly in the intestinal epithelium. Expressed in luminal cells of colonic mucosa. Also expressed in the Merkel cells of keratinized oral mucosa; specifically at the tips of some rete ridges of the gingival mucosa, in the basal layer of the palatal mucosa and in the taste buds of lingual mucosa.
序列相似性	Belongs to the intermediate filament family.
发展阶段	First detected at embryonic week 8 in individual 'converted' simple epithelial cells of the developing intestinal mucosa. In later fetal stages, synthesis extends over most goblet cells and a variable number of villus enterocytes. In the developing gastric and intestinal mucosa, expressed in all enterocytes and goblet cells as well as certain 'low-differentiated' columnar cells, whereas the neuroendocrine and Paneth cells are negative.
翻译后修饰	Hyperphosphorylation at Ser-13 occurs during the early stages of apoptosis but becomes less prominent during the later stages. Phosphorylation at Ser-13 also increases in response to stress brought on by cell injury. Proteolytically cleaved by caspases during apoptosis. Cleavage occurs at Asp-228.
细胞定位	Cytoplasm.

图片



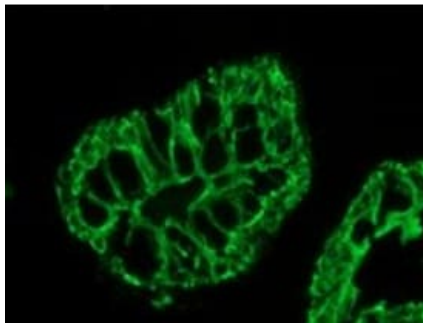
Immunohistochemistry (Formalin/PFA-fixed paraffin-embedded sections) - Anti-Cytokeratin 20 antibody [Ks20.8] (ab854)

ab854 staining cytokeratin in human colon cancer tissue section by Immunohistochemistry (Formalin/ PFA fixed paraffin embedded tissue sections).



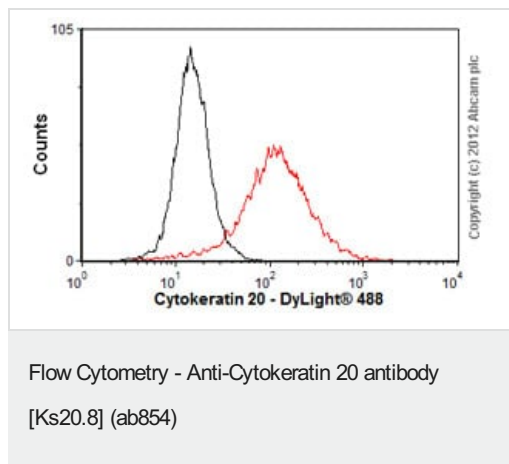
Immunocytochemistry/ Immunofluorescence - Anti-Cytokeratin 20 antibody [Ks20.8] (ab854)

ICC/IF image of ab854 stained Jeg3 cells. The cells were 4% formaldehyde fixed (10 min) and then incubated in 1%BSA / 10% normal goat serum / 0.3M glycine in 0.1% PBS-Tween for 1h to permeabilise the cells and block non-specific protein-protein interactions. The cells were then incubated with the antibody (ab854, 1/200 dilution) overnight at +4°C. The secondary antibody (green) was **ab96879**, DyLight® 488 goat anti-mouse IgG (H+L) used at a 1/250 dilution for 1h. Alexa Fluor® 594 WGA was used to label plasma membranes (red) at a 1/200 dilution for 1h. DAPI was used to stain the cell nuclei (blue) at a concentration of 1.43µM



Immunocytochemistry/ Immunofluorescence - Anti-Cytokeratin 20 antibody [Ks20.8] (ab854)

Immunofluorescent analysis of human colon epithelium, staining Cytokeratin 20 with ab854.



Overlay histogram showing LoVo cells stained with ab854 (red line). The cells were fixed with 80% methanol (5 min) and then permeabilized with 0.1% PBS-Tween for 20 min. The cells were then incubated in 1x PBS / 10% normal goat serum / 0.3M glycine to block non-specific protein-protein interactions followed by the antibody (ab854, 1/50 dilution) for 30 min at 22°C. The secondary antibody used was DyLight® 488 goat anti-mouse IgG (H+L) (**ab96879**) at 1/500 dilution for 30 min at 22°C. Isotype control antibody (black line) was mouse IgG2a [ICIGG2A] (**ab91361**, 2µg/1x10<sup>6</sup> cells) used under the same conditions. Acquisition of >5,000 events was performed.

**Please note:** All products are "FOR RESEARCH USE ONLY. NOT FOR USE IN DIAGNOSTIC PROCEDURES"

### Our Abpromise to you: Quality guaranteed and expert technical support

- Replacement or refund for products not performing as stated on the datasheet
- Valid for 12 months from date of delivery
- Response to your inquiry within 24 hours
- We provide support in Chinese, English, French, German, Japanese and Spanish
- Extensive multi-media technical resources to help you
- We investigate all quality concerns to ensure our products perform to the highest standards

If the product does not perform as described on this datasheet, we will offer a refund or replacement. For full details of the Abpromise, please visit <https://www.abcam.cn/abpromise> or contact our technical team.

### Terms and conditions

- Guarantee only valid for products bought direct from Abcam or one of our authorized distributors