


### Anti-Cytokeratin 13 antibody [EPR3671] ab92551

敲除验证
重组
RabMAb

★★★★★
[1 Abreviews](#)
[38 References](#)
[11 图像](#)

#### 概述

<b>产品名称</b>	Anti-Cytokeratin 13抗体[EPR3671]
<b>描述</b>	兔单克隆抗体[EPR3671] to Cytokeratin 13
<b>宿主</b>	Rabbit
<b>经测试应用</b>	<b>适用于:</b> WB, Flow Cyt (Intra), IHC-P, ICC/IF <b>不适用于:</b> IP
<b>种属反应性</b>	<b>与反应:</b> Human <b>预测可用于:</b> Mouse 
<b>免疫原</b>	Synthetic peptide. This information is proprietary to Abcam and/or its suppliers.
<b>阳性对照</b>	WB: A431, HACAT or 293T cell lysate IHC: transitional cell urinary bladder carcinoma tissue Flow Cyt (intra): A431 cells ICC/IF: A431 cells
<b>常规说明</b>	<p>This product is a recombinant monoclonal antibody, which offers several advantages including:</p> <ul style="list-style-type: none"> <li>- High batch-to-batch consistency and reproducibility</li> <li>- Improved sensitivity and specificity</li> <li>- Long-term security of supply</li> <li>- Animal-free production</li> </ul> <p>For more information <a href="#">see here</a>.</p> <p>Our RabMAb<sup>®</sup> technology is a patented hybridoma-based technology for making rabbit monoclonal antibodies. For details on our patents, please refer to <a href="#">RabMAb<sup>®</sup> patents</a>.</p> <p>Rat: We have preliminary internal testing data to indicate this antibody may not react with this species. Please contact us for more information.</p>

#### 性能

<b>形式</b>	Liquid
<b>存放说明</b>	Shipped at 4°C. Store at +4°C short term (1-2 weeks). Upon delivery aliquot. Store at -20°C. Avoid freeze / thaw cycle.
<b>解离常数 (K<sub>D</sub>)</b>	K <sub>D</sub> = 1.20 x 10 <sup>-11</sup> M





[Learn more about K<sub>D</sub>](#)

<b>存储溶液</b>	pH: 7.20 Preservative: 0.01% Sodium azide Constituents: 59% PBS, 40% Glycerol (glycerin, glycerine), 0.5% BSA
<b>纯度</b>	Protein A purified
<b>克隆</b>	单克隆
<b>克隆编号</b>	EPR3671
<b>同种型</b>	IgG

## 应用

**The Abpromise guarantee**      **Abpromise™** 承诺保证使用 ab92551 于以下的经测试应用

“应用说明”部分 下显示的仅为推荐的起始稀释度;实际最佳的稀释度/浓度应由使用者检定。

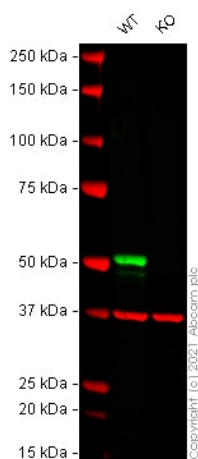
应用	Ab评论	说明
<b>WB</b>		1/100000 - 1/500000. Predicted molecular weight: 50 kDa.
<b>Flow Cyt (Intra)</b>		1/20.
<b>IHC-P</b>		1/100 - 1/250. Perform heat mediated antigen retrieval via the pressure cooker method before commencing with IHC staining protocol.
<b>ICC/IF</b>		1/500.

**应用说明**      Is unsuitable for IP.

## 靶标

<b>组织特异性</b>	Expressed in some epidermal sweat gland ducts (at protein level) and in exocervix, esophagus and placenta.
<b>疾病相关</b>	Defects in KRT13 are a cause of white sponge nevus of cannon (WSN) [MIM:193900]. WSN is a rare autosomal dominant disorder which predominantly affects non-cornified stratified squamous epithelia. Clinically, it is characterized by the presence of soft, white, and spongy plaques in the oral mucosa. The characteristic histopathologic features are epithelial thickening, parakeratosis, and vacuolization of the suprabasal layer of oral epithelial keratinocytes. Less frequently the mucous membranes of the nose, esophagus, genitalia and rectum are involved.
<b>序列相似性</b>	Belongs to the intermediate filament family.
<b>翻译后修饰</b>	O-glycosylated; glycans consist of single N-acetylglucosamine residues.

## 图片



Western blot - Anti-Cytokeratin 13 antibody [EPR3671] (ab92551)

**All lanes** : Anti-Cytokeratin 13 antibody [EPR3671] (ab92551) at 1/100000 dilution

**Lane 1** : Wild-type A431 cell lysate

**Lane 2** : KRT13 knockout A431 cell lysate

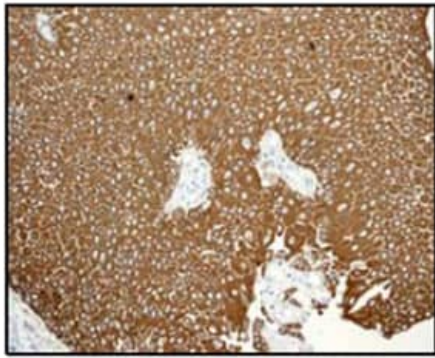
Lysates/proteins at 20 µg per lane.

Performed under reducing conditions.

**Predicted band size:** 50 kDa

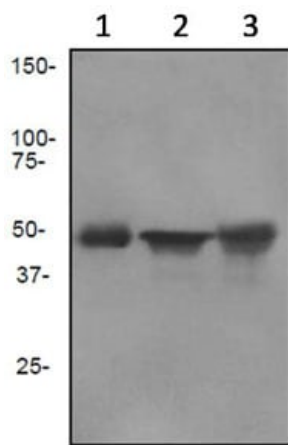
**Observed band size:** 51 kDa

False colour image of Western blot: Anti-Cytokeratin 13 antibody [EPR3671] staining at 1/100000 dilution, shown in green; Mouse anti-GAPDH antibody [6C5] ([ab8245](#)) loading control staining at 1/20000 dilution, shown in red. In Western blot, ab92551 was shown to bind specifically to Cytokeratin 13. A band was observed at 51 kDa in wild-type A431 cell lysates with no signal observed at this size in Krt13 knockout cell line [ab269483](#) (knockout cell lysate [ab269647](#)). To generate this image, wild-type and Krt13 knockout A431 cell lysates were analysed. First, samples were run on an SDS-PAGE gel then transferred onto a nitrocellulose membrane. Membranes were blocked in 3 % milk in TBS-0.1 % Tween<sup>®</sup> 20 (TBS-T) before incubation with primary antibodies overnight at 4 °C. Blots were washed four times in TBS-T, incubated with secondary antibodies for 1 h at room temperature, washed again four times then imaged. Secondary antibodies used were Goat anti-Rabbit IgG H&L (IRDye<sup>®</sup> 800CW) preabsorbed ([ab216773](#)) and Goat anti-Mouse IgG H&L (IRDye<sup>®</sup> 680RD) preabsorbed ([ab216776](#)) at 1/20000 dilution.



Immunohistochemistry (Formalin/PFA-fixed paraffin-embedded sections) - Anti-Cytokeratin 13 antibody [EPR3671] (ab92551)

ab92551 at 1/100 dilution staining Cytokeratin 13 in formalin-fixed, paraffin-embedded human transitional cell urinary bladder carcinoma tissue by immunohistochemistry. Detection: DAB staining. Antigen retrieval was heat mediated via the pressure cooker method before commencing with IHC staining protocol.



Western blot - Anti-Cytokeratin 13 antibody [EPR3671] (ab92551)

**All lanes** : Anti-Cytokeratin 13 antibody [EPR3671] (ab92551) at 1/100000 dilution

**Lane 1** : A431 cell lysate

**Lane 2** : HACAT cell lysate

**Lane 3** : 293T cell lysate

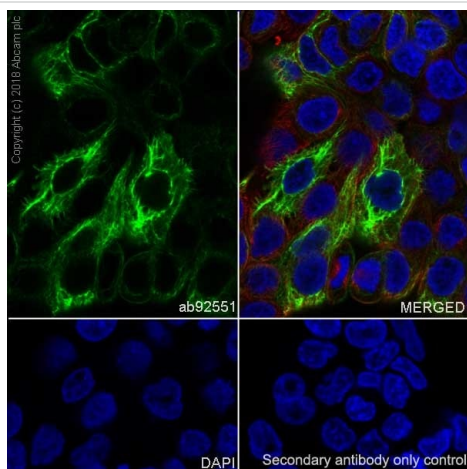
Lysates/proteins at 10 µg per lane.

**Secondary**

**Lanes 1-2** : HRP labelled Goat anti-Rabbit IgG at 1/2000 dilution

**Lane 3** : HRP labelled goat anti-Rabbit IgG at 1/2000 dilution

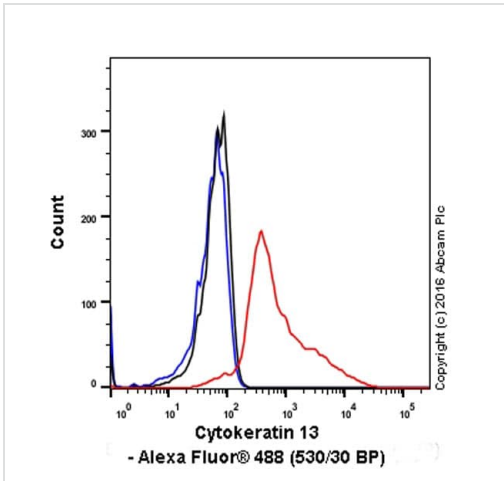
**Predicted band size:** 50 kDa



Immunocytochemistry/ Immunofluorescence - Anti-Cytokeratin 13 antibody [EPR3671] (ab92551)

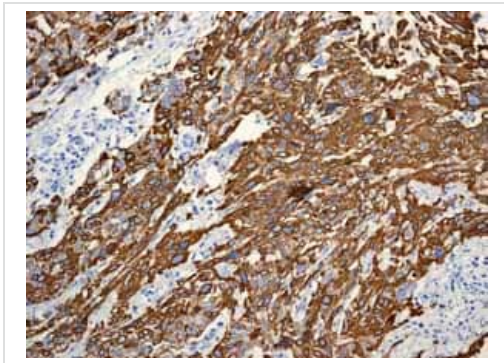
Immunocytochemistry analysis of A431 (human epidermoid carcinoma epithelial cell) cells labeling Cytokeratin 13 with ab92551 at 1/500 (4 µg/mL). Cells were fixed with 4% Paraformaldehyde and permeabilised with 0.1% tritonX-100. **ab195889** Anti-alpha Tubulin antibody [DM1A] - Microtubule Marker (Alexa Fluor® 594) at 1/200 (2.5 µg/mL) was used to counterstain the cells. **ab150077** AlexaFluor®488 Goat anti-Rabbit at 1/1000 (2 µg/mL) was used as the secondary antibody. DAPI (blue) was used as nuclear counterstain.

Confocal image showing cytoplasmic staining in A431 cells.



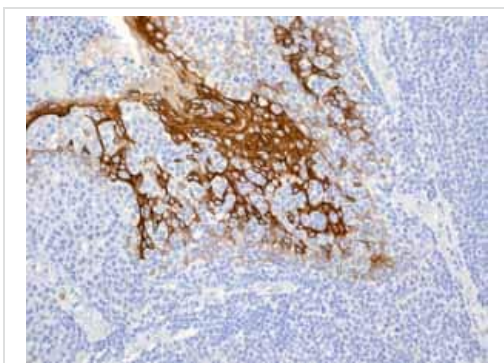
Flow Cytometry (Intracellular) - Anti-CytoKeratin 13 antibody [EPR3671] (ab92551)

Intracellular Flow Cytometry analysis of A431 (human epidermoid carcinoma) cells labeling CytoKeratin 13 with purified ab92551 at 1/20 dilution (red). The secondary antibody was Goat anti rabbit IgG (Alexa Fluor® 488) at 1/2000 dilution. A Rabbit monoclonal IgG (Black) was used as the isotype control and cells without incubation with primary antibody and secondary antibody (Blue) were used as unlabeled control.



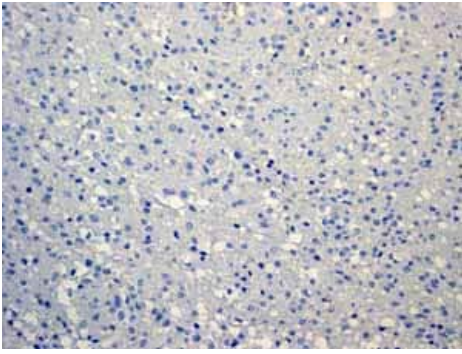
Immunohistochemistry (Formalin/PFA-fixed paraffin-embedded sections) - Anti-CytoKeratin 13 antibody [EPR3671] (ab92551)

ab92551 showing positive staining in Cervical human carcinoma tissue. Antigen retrieval was heat mediated via the pressure cooker method before commencing with IHC staining protocol.



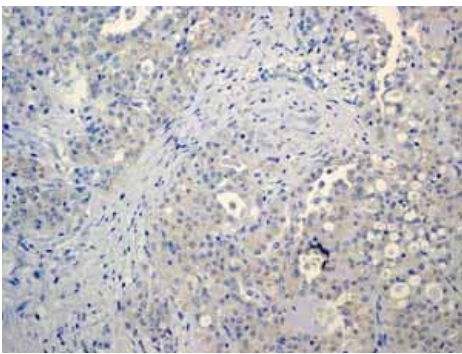
Immunohistochemistry (Formalin/PFA-fixed paraffin-embedded sections) - Anti-CytoKeratin 13 antibody [EPR3671] (ab92551)

ab92551 showing positive staining in Normal human tonsil squamous cells tissue. Antigen retrieval was heat mediated via the pressure cooker method before commencing with IHC staining protocol.



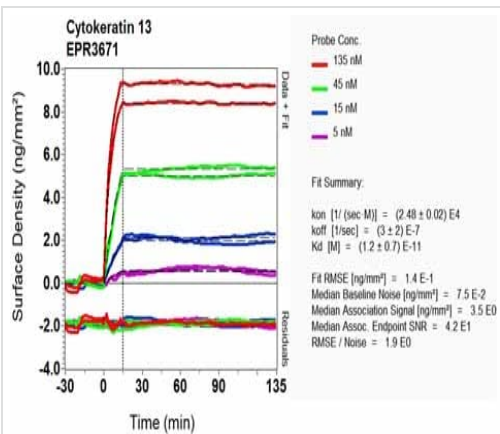
Immunohistochemistry (Formalin/PFA-fixed paraffin-embedded sections) - Anti-Cytokeratin 13 antibody [EPR3671] (ab92551)

ab92551 showing negative staining in human Glioma tissue. Antigen retrieval was heat mediated via the pressure cooker method before commencing with IHC staining protocol.



Immunohistochemistry (Formalin/PFA-fixed paraffin-embedded sections) - Anti-Cytokeratin 13 antibody [EPR3671] (ab92551)

ab92551 showing negative staining in human Breast carcinoma tissue. Antigen retrieval was heat mediated via the pressure cooker method before commencing with IHC staining protocol.



OL-RD Scanning - Anti-Cytokeratin 13 antibody [EPR3671] (ab92551)

Equilibrium disassociation constant ( $K_D$ )

Learn more about  $K_D$

[Click here to learn more about  \$K\_D\$](#)

### Why choose a recombinant antibody?



**Research with confidence**  
Consistent and reproducible results



**Long-term and scalable supply**  
Recombinant technology



**Success from the first experiment**  
Confirmed specificity



**Ethical standards compliant**  
Animal-free production

Anti-Cytokeratin 13 antibody [EPR3671] (ab92551)

**Please note:** All products are "FOR RESEARCH USE ONLY. NOT FOR USE IN DIAGNOSTIC PROCEDURES"

### Our Abpromise to you: Quality guaranteed and expert technical support

---

- Replacement or refund for products not performing as stated on the datasheet
- Valid for 12 months from date of delivery
- Response to your inquiry within 24 hours
- We provide support in Chinese, English, French, German, Japanese and Spanish
- Extensive multi-media technical resources to help you
- We investigate all quality concerns to ensure our products perform to the highest standards

If the product does not perform as described on this datasheet, we will offer a refund or replacement. For full details of the Abpromise, please visit <https://www.abcam.cn/abpromise> or contact our technical team.

### Terms and conditions

---

- Guarantee only valid for products bought direct from Abcam or one of our authorized distributors