


Anti-Cytochrome C antibody [EP1326-80-5-4] ab76237

重组 RabMAb

15 References 4 图像

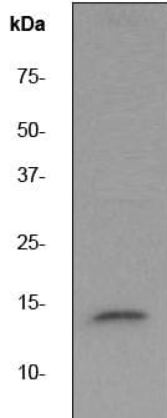
概述

产品名称	Anti-Cytochrome C抗体[EP1326-80-5-4]
描述	兔单克隆抗体[EP1326-80-5-4] to Cytochrome C
宿主	Rabbit
经测试应用	适用于: WB, IHC-P 不适用于: Flow Cyt or ICC/IF
种属反应性	与反应: Human 预测可用于: Mouse, Rat 
免疫原	Synthetic peptide. This information is proprietary to Abcam and/or its suppliers.
阳性对照	HeLa mitochondrial lysate Human heart muscle tissue Human kidney tissue
常规说明	<p>This product is a recombinant monoclonal antibody, which offers several advantages including:</p> <ul style="list-style-type: none"><li>- High batch-to-batch consistency and reproducibility</li><li>- Improved sensitivity and specificity</li><li>- Long-term security of supply</li><li>- Animal-free production</li></ul> <p>For more information <a href="#">see here</a>.</p> <p>Our RabMAb<sup>®</sup> technology is a patented hybridoma-based technology for making rabbit monoclonal antibodies. For details on our patents, please refer to <a href="#">RabMAb<sup>®</sup> patents</a>.</p>

性能

形式	Liquid
存放说明	Shipped at 4°C. Upon delivery aliquot and store at -20°C. Avoid freeze / thaw cycles.
存储溶液	pH: 7.20 Preservative: 0.05% Sodium azide Constituents: 0.1% BSA, 40% Glycerol (glycerin, glycerine), 9.85% Tris glycine, 50% Tissue culture supernatant
纯度	Protein A purified
克隆	单克隆
克隆编号	EP1326-80-5-4

同种型	IgG	
应用		
<b>The Abpromise guarantee</b> <b>Abpromise™</b> 承诺保证使用ab76237于以下的经测试应用		
“应用说明”部分 下显示的仅为推荐的起始稀释度;实际最佳的稀释度/浓度应由使用者检定。		
应用	Ab评论	说明
WB		1/250 - 1/500. Detects a band of approximately 14 kDa.
IHC-P		1/100 - 1/250. Perform heat mediated antigen retrieval before commencing with IHC staining protocol. Use of HRP-conjugated or polymerized HRP secondary antibodies recommended, stronger signals have been found using the polymerized HRP secondary.
应用说明	Is unsuitable for Flow Cyt or ICC/IF.	
靶标		
功能	Electron carrier protein. The oxidized form of the cytochrome c heme group can accept an electron from the heme group of the cytochrome c1 subunit of cytochrome reductase. Cytochrome c then transfers this electron to the cytochrome oxidase complex, the final protein carrier in the mitochondrial electron-transport chain. Plays a role in apoptosis. Suppression of the anti-apoptotic members or activation of the pro-apoptotic members of the Bcl-2 family leads to altered mitochondrial membrane permeability resulting in release of cytochrome c into the cytosol. Binding of cytochrome c to Apaf-1 triggers the activation of caspase-9, which then accelerates apoptosis by activating other caspases.	
疾病相关	Defects in CYCS are the cause of thrombocytopenia type 4 (THC4) [MIM:612004]; also known as autosomal dominant thrombocytopenia type 4. Thrombocytopenia is the presence of relatively few platelets in blood. THC4 is a non-syndromic form of thrombocytopenia. Clinical manifestations of thrombocytopenia are absent or mild. THC4 may be caused by dysregulated platelet formation.	
序列相似性	Belongs to the cytochrome c family.	
翻译后修饰	Binds 1 heme group per subunit.	
细胞定位	Mitochondrion matrix.	
图片		



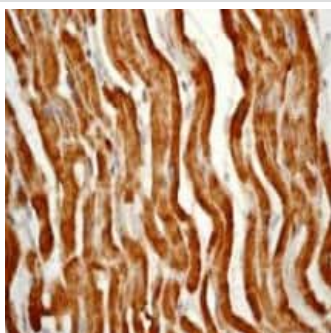
Western blot - Anti-Cytochrome C antibody  
[EP1326-80-5-4] (ab76237)

Anti-Cytochrome C antibody [EP1326-80-5-4] (ab76237) at 1/500 dilution + HeLa cell lysate at 10 µg

### Secondary

goat anti-rabbit HRP at 1/1000 dilution

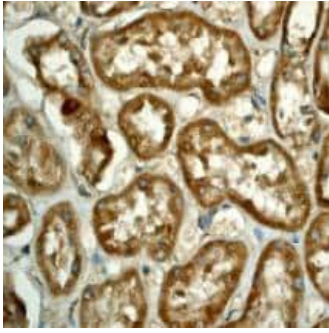
**Observed band size:** 14 kDa



Immunohistochemistry (Formalin/PFA-fixed paraffin-embedded sections) - Anti-Cytochrome C antibody  
[EP1326-80-5-4] (ab76237)

ab76237, at a 1/100 dilution, staining human Cytochrome C in heart muscle by Immunohistochemistry, Formalin/PFA-fixed paraffin-embedded tissue.

Perform heat mediated antigen retrieval before commencing with IHC staining protocol.



Immunohistochemistry (Formalin/PFA-fixed paraffin-embedded sections) - Anti-Cytochrome C antibody [EP1326-80-5-4] (ab76237)

ab76237, at a 1/100 dilution, staining human Cytochrome C in kidney by Immunohistochemistry Formalin/PFA-fixed paraffin-embedded tissue.

Perform heat mediated antigen retrieval before commencing with IHC staining protocol.

#### Why choose a recombinant antibody?



Anti-Cytochrome C antibody [EP1326-80-5-4] (ab76237)

**Please note:** All products are "FOR RESEARCH USE ONLY. NOT FOR USE IN DIAGNOSTIC PROCEDURES"

#### Our Abpromise to you: Quality guaranteed and expert technical support

- Replacement or refund for products not performing as stated on the datasheet
- Valid for 12 months from date of delivery
- Response to your inquiry within 24 hours
- We provide support in Chinese, English, French, German, Japanese and Spanish
- Extensive multi-media technical resources to help you
- We investigate all quality concerns to ensure our products perform to the highest standards

If the product does not perform as described on this datasheet, we will offer a refund or replacement. For full details of the Abpromise, please visit <https://www.abcam.cn/abpromise> or contact our technical team.

#### Terms and conditions

- Guarantee only valid for products bought direct from Abcam or one of our authorized distributors