

Anti-Cyclophilin A antibody ab41684

★★★★★ [7 Abreviews](#) [53 References](#) [4 图像](#)

概述

产品名称	Anti-Cyclophilin A抗体
描述	兔多克隆抗体to Cyclophilin A
宿主	Rabbit
特异性	Replenishment batches of our polyclonal antibody, ab41684 are tested in WB. Previous batches were additionally validated in ICC/IF. This application is still expected to work and is covered by our Abpromise guarantee. You may also be interested in our alternative recombinant antibody, ab126738 .
经测试应用	适用于: WB, ICC/IF
种属反应性	与反应: Rat, Human 预测可用于: Mouse, Cow, Dog, Pig, Monkey, Gorilla, Chinese hamster, Orangutan 
免疫原	Synthetic peptide conjugated to KLH derived from within residues 100 to the C-terminus of Human Cyclophilin A.参阅Abcam的 专有抗源政策 (Peptide available as ab42406 .)
常规说明	<p>The Life Science industry has been in the grips of a reproducibility crisis for a number of years. Abcam is leading the way in addressing this with our range of recombinant monoclonal antibodies and knockout edited cell lines for gold-standard validation. Please check that this product meets your needs before purchasing.</p> <p>If you have any questions, special requirements or concerns, please send us an inquiry and/or contact our Support team ahead of purchase. Recommended alternatives for this product can be found below, along with publications, customer reviews and Q&As</p>

性能

形式	Liquid
存放说明	Shipped at 4°C. Store at +4°C short term (1-2 weeks). Upon delivery aliquot. Store at -20°C or -80°C. Avoid freeze / thaw cycle.
存储溶液	pH: 7.40 Preservative: 0.02% Sodium azide Constituent: PBS
	Batches of this product that have a concentration < 1mg/ml may have BSA added as a stabilising agent. If you would like information about the formulation of a specific lot, please contact our scientific support team who will be happy to help.

纯度	Immunogen affinity purified
克隆	多克隆
同种型	IgG

应用

The Abpromise guarantee **Abpromise™**承诺保证使用ab41684于以下的经测试应用

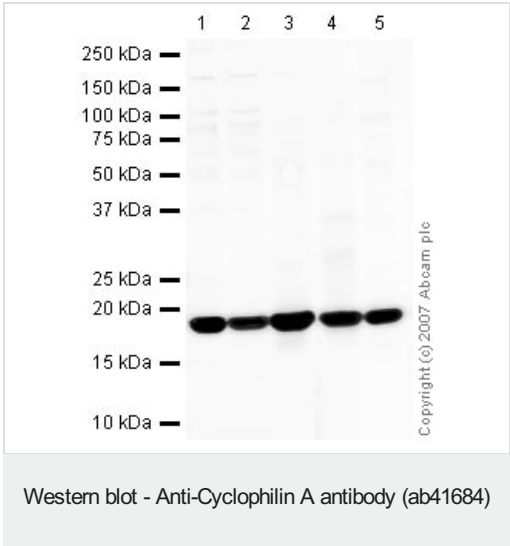
“应用说明”部分 下显示的仅为推荐的起始稀释度;实际最佳的稀释度/浓度应由使用者检定。

应用	Ab评论	说明
WB	★★★★★ (3)	Use a concentration of 1 µg/ml. Detects a band of approximately 18 kDa (predicted molecular weight: 18 kDa).
ICC/IF	★★★★★ (1)	Use a concentration of 1 µg/ml.

靶标

功能	PPases accelerate the folding of proteins. It catalyzes the cis-trans isomerization of proline imidic peptide bonds in oligopeptides.
序列相似性	Belongs to the cyclophilin-type PPase family. PPase A subfamily. Contains 1 PPase cyclophilin-type domain.
细胞定位	Cytoplasm.

图片



- All lanes :** Anti-Cyclophilin A antibody (ab41684) at 1 µg/ml
- Lane 1 :** HeLa (Human epithelial carcinoma cell line) Whole Cell Lysate
- Lane 2 :** A431 (Human epithelial carcinoma cell line) Whole Cell Lysate
- Lane 3 :** Human lymph node tissue lysate - total protein ([ab29871](#))
- Lane 4 :** Human thymus tissue lysate - total protein ([ab30146](#))
- Lane 5 :** Lung (Rat) Tissue Lysate

Lysates/proteins at 10 µg per lane.

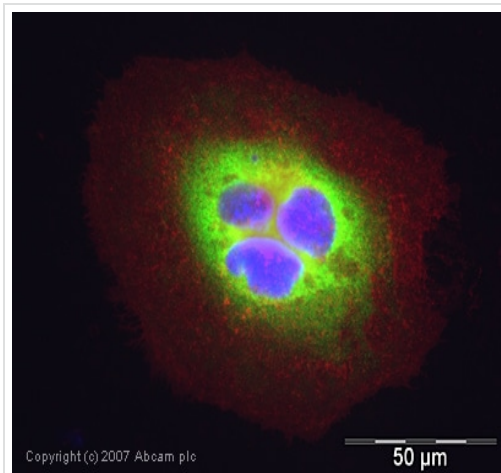
Secondary

All lanes : IRDye 680 Conjugated Goat Anti-Rabbit IgG (H+L) at 1/10000 dilution

Performed under reducing conditions.

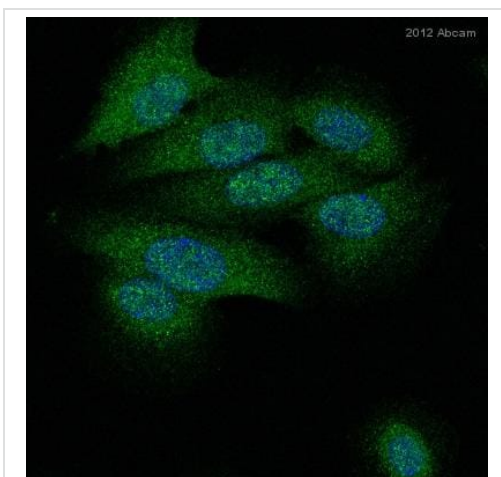
Predicted band size: 18 kDa

Observed band size: 18 kDa



Immunocytochemistry/ Immunofluorescence - Anti-Cyclophilin A antibody (ab41684)

ICC/IF image of ab41684 stained human HeLa cells. The cells were PFA fixed (10 min), permeabilised in TBS-T (20 min) and incubated with the antibody (ab41684, 1 µg/ml) for 1h at room temperature. 1%BSA / 10% normal serum / 0.3M glycine was used to quench autofluorescence and block non-specific protein-protein interactions. The secondary antibody (green) was Alexa Fluor® 488 goat anti-rabbit IgG (H+L) used at a 1/1000 dilution for 1h. Alexa Fluor® 594 WGA was used to label plasma membranes (red). DAPI was used to stain the cell nuclei (blue).



Immunocytochemistry/ Immunofluorescence - Anti-Cyclophilin A antibody (ab41684)

This image is courtesy of an abreview submitted by Alina Macovei.

Immunocytochemistry/ Immunofluorescence analysis of HepaRG cells labeling Cyclophilin A with ab41684 at 1 µg/ml. Cells were fixed with formaldehyde and permeabilized with 0.2% Triton X-100 in PBS. The cells were blocked with 1% milk for 20 minutes at room temperature. A polyclonal goat anti-rabbit Alexa Fluor 488 secondary antibody was used at 1/400 dilution.



Western blot - Anti-Cyclophilin A antibody (ab41684)

ab88202 is a GST-tagged recombinant protein with an expected molecular weight of 50kDa.

Please note: All products are "FOR RESEARCH USE ONLY. NOT FOR USE IN DIAGNOSTIC PROCEDURES"

Our Abpromise to you: Quality guaranteed and expert technical support

- Replacement or refund for products not performing as stated on the datasheet
- Valid for 12 months from date of delivery
- Response to your inquiry within 24 hours
- We provide support in Chinese, English, French, German, Japanese and Spanish
- Extensive multi-media technical resources to help you
- We investigate all quality concerns to ensure our products perform to the highest standards

If the product does not perform as described on this datasheet, we will offer a refund or replacement. For full details of the Abpromise, please visit <https://www.abcam.cn/abpromise> or contact our technical team.

Terms and conditions

- Guarantee only valid for products bought direct from Abcam or one of our authorized distributors