


### Anti-Cyclophilin 40 antibody [EPR14845(B)] ab181983

敲除验证
重组
RabMAb

[3 References](#)
[5 图像](#)

#### 概述

产品名称	Anti-Cyclophilin 40抗体[EPR14845(B)]
描述	兔单克隆抗体[EPR14845(B)] to Cyclophilin 40
宿主	Rabbit
经测试应用	适用于: IHC-P, WB, ICC/IF
种属反应性	与反应: Human 预测可用于: Mouse, Rat 
免疫原	Synthetic peptide. This information is proprietary to Abcam and/or its suppliers.
阳性对照	WB: HeLa, JAR, HepG2 and K-562 cell lysate; Human fetal brain lysate; Recombinant Human Cyclophilin 40 protein (BSA and azide free) ( <a href="#">ab173064</a> ). IHC-P: Human transitional cell carcinoma of bladder. ICC/IF: K562 cell lysate.
常规说明	<p>This product is a recombinant monoclonal antibody, which offers several advantages including:</p> <ul style="list-style-type: none"> <li>- High batch-to-batch consistency and reproducibility</li> <li>- Improved sensitivity and specificity</li> <li>- Long-term security of supply</li> <li>- Animal-free production</li> </ul> <p>For more information <a href="#">see here</a>.</p> <p>Our RabMAb<sup>®</sup> technology is a patented hybridoma-based technology for making rabbit monoclonal antibodies. For details on our patents, please refer to <a href="#">RabMAb<sup>®</sup> patents</a>.</p>

#### 性能

形式	Liquid
存放说明	Shipped at 4°C. Store at +4°C short term (1-2 weeks). Upon delivery aliquot. Store at -20°C long term. Avoid freeze / thaw cycle.
存储溶液	<p>pH: 7.2</p> <p>Preservative: 0.01% Sodium azide</p> <p>Constituents: 9% PBS, 40% Glycerol (glycerin, glycerine), 0.05% BSA, 50% Tissue culture supernatant</p>
纯度	Tissue culture supernatant
克隆	单克隆

克隆编号	EPR14845(B)
同种型	IgG

应用

The Abpromise guarantee

Abpromise™承诺保证使用ab181983于以下的经测试应用

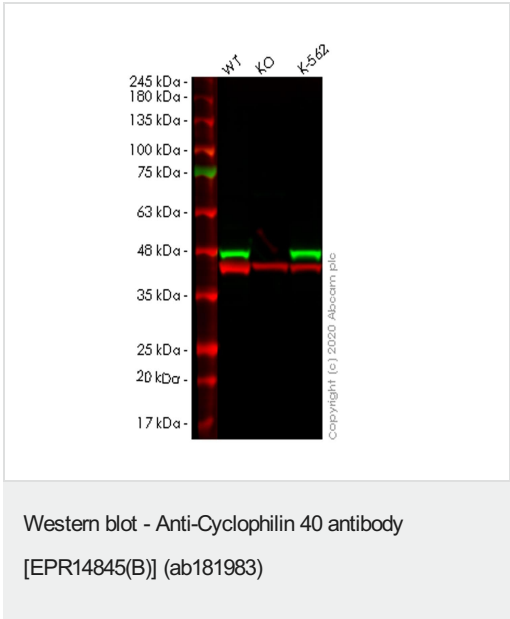
“应用说明”部分 下显示的仅为推荐的起始稀释度;实际最佳的稀释度/浓度应由使用者检定。

应用	Ab评论	说明
IHC-P		1/50. Perform heat mediated antigen retrieval with Tris/EDTA buffer pH 9.0 before commencing with IHC staining protocol.
WB		1/10000 - 1/50000. Predicted molecular weight: 41 kDa.
ICC/IF		1/500.

靶标

功能	PPases accelerate the folding of proteins. It catalyzes the cis-trans isomerization of proline imidic peptide bonds in oligopeptides.
组织特异性	Widely expressed.
序列相似性	Belongs to the cyclophilin-type PPase family. PPase D subfamily. Contains 1 PPase cyclophilin-type domain. Contains 3 TPR repeats.
细胞定位	Cytoplasm.

图片



**All lanes** : Anti-Cyclophilin 40 antibody [EPR14845(B)] (ab181983) at 1/1000 dilution

- Lane 1** : Wild-type HeLa cell lysate
- Lane 2** : PPID knockout HeLa cell lysate
- Lane 3** : K-562 cell lysate

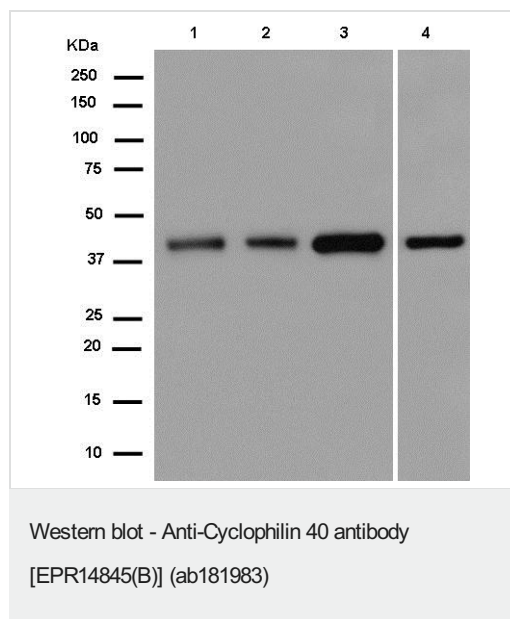
Lysates/proteins at 20 µg per lane.

**Secondary**  
**All lanes** : Goat anti-Rabbit IgG H&L (IRDye® 800CW) preadsorbed ([ab216773](#)) at 1/10000 dilution

**Predicted band size:** 41 kDa  
**Observed band size:** 47 kDa

**Lanes 1-3:** Merged signal (red and green). Green - ab181983 observed at 47 kDa. Red - loading control **ab8245** observed at 36 kDa.

ab181983 Anti-Cyclophilin 40 antibody [EPR14845(B)] was shown to specifically react with Cyclophilin 40 in wild-type HeLa cells. Loss of signal was observed when knockout cell line **ab265788** (knockout cell lysate **ab257600**) was used. Wild-type and Cyclophilin 40 knockout samples were subjected to SDS-PAGE. ab181983 and Anti-GAPDH antibody [6C5] - Loading Control (**ab8245**) were incubated overnight at 4°C at 1 in 1000 dilution and 1 in 20000 dilution respectively. Blots were developed with Goat anti-Rabbit IgG H&L (IRDye® 800CW) preadsorbed (**ab216773**) and Goat anti-Mouse IgG H&L (IRDye® 680RD) preadsorbed (**ab216776**) secondary antibodies at 1 in 20000 dilution for 1 hour at room temperature before imaging.



**All lanes :** Anti-Cyclophilin 40 antibody [EPR14845(B)] (ab181983) at 1/20000 dilution

**Lane 1 :** Human fetal brain

**Lane 2 :** JAR

**Lane 3 :** K562

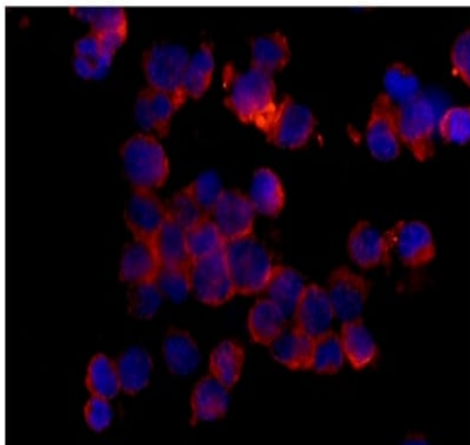
**Lane 4 :** HepG2

Lysates/proteins at 20 µg per lane.

#### Secondary

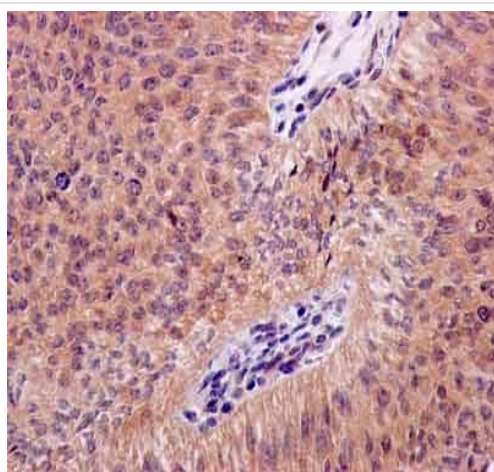
**All lanes :** Goat Anti-Rabbit IgG, (H+L), Peroxidase conjugated at 1/1000 dilution

**Predicted band size:** 41 kDa



Immunofluorescence staining of K562 cells labeling Cyclophilin 40 with ab181983 at 1/200 dilution followed by labeling with Goat anti rabbit IgG(Alexa Fluor® 555) antibody (1/500 dilution) and counter-staining with Dapi (blue)

Immunocytochemistry/ Immunofluorescence - Anti-Cyclophilin 40 antibody [EPR14845(B)] (ab181983)



Immunohistochemical analysis of paraffin embedded Human transitional cell carcinoma of bladder labeling Cyclophilin 40 with ab181983 at 1/50 dilution followed by labeling with secondary Ready to use HRP Polymer for Rabbit IgG and hematoxylin staining. Perform heat mediated antigen retrieval with EDTA buffer pH 9 before commencing with IHC staining protocol.

Immunohistochemistry (Formalin/PFA-fixed paraffin-embedded sections) - Anti-Cyclophilin 40 antibody [EPR14845(B)] (ab181983)

### Why choose a recombinant antibody?



**Research with confidence**  
Consistent and reproducible results



**Long-term and scalable supply**  
Recombinant technology



**Success from the first experiment**  
Confirmed specificity



**Ethical standards compliant**  
Animal-free production

Anti-Cyclophilin 40 antibody [EPR14845(B)]  
(ab181983)

**Please note:** All products are "FOR RESEARCH USE ONLY. NOT FOR USE IN DIAGNOSTIC PROCEDURES"

### Our Abpromise to you: Quality guaranteed and expert technical support

---

- Replacement or refund for products not performing as stated on the datasheet
- Valid for 12 months from date of delivery
- Response to your inquiry within 24 hours
- We provide support in Chinese, English, French, German, Japanese and Spanish
- Extensive multi-media technical resources to help you
- We investigate all quality concerns to ensure our products perform to the highest standards

If the product does not perform as described on this datasheet, we will offer a refund or replacement. For full details of the Abpromise, please visit <https://www.abcam.cn/abpromise> or contact our technical team.

### Terms and conditions

---

- Guarantee only valid for products bought direct from Abcam or one of our authorized distributors