



Anti-Cyclin D1 antibody [rCCND1/4752] ab273608

重组

★★★★★ [5 Abreviews](#) [1 References](#) [2 图像](#)

概述

产品名称	Anti-Cyclin D1抗体[rCCND1/4752]
描述	小鼠单克隆抗体[rCCND1/4752] to Cyclin D1
宿主	Mouse
经测试应用	适用于: IHC-P
种属反应性	与反应: Human
免疫原	Synthetic peptide corresponding to Human Cyclin D1 aa 200-300. Database link: P24385 <div> Run BLAST with  Run BLAST with</div>
阳性对照	IHC-P: Human mantle cell lymphoma.

性能

形式	Liquid
存放说明	Shipped at 4°C. Store at +4°C short term (1-2 weeks). Upon delivery aliquot. Store at -20°C. Avoid freeze / thaw cycle.
存储溶液	pH: 7.2 Preservative: 0.05% Sodium azide Constituents: PBS, 0.05% BSA
纯度	Protein A/G purified
克隆	单克隆
克隆编号	rCCND1/4752
同种型	IgG2a
轻链类型	kappa

应用

The Abpromise guarantee **Abpromise™**承诺保证使用ab273608于以下的经测试应用

“应用说明”部分 下显示的仅为推荐的起始稀释度;实际最佳的稀释度/浓度应由使用者检定。

应用	Ab评论	说明
IHC-P		Use a concentration of 1 - 2 µg/ml. Perform heat mediated antigen retrieval with Tris/EDTA buffer pH 9.0 before commencing with IHC staining protocol.

靶标

功能

Essential for the control of the cell cycle at the G1/S (start) transition.

疾病相关

Note=A chromosomal aberration involving CCND1 may be a cause of B-lymphocytic malignancy, particularly mantle-cell lymphoma (MCL). Translocation t(11;14)(q13;q32) with immunoglobulin gene regions. Activation of CCND1 may be oncogenic by directly altering progression through the cell cycle.

Note=A chromosomal aberration involving CCND1 may be a cause of parathyroid adenomas. Translocation t(11;11)(q13;p15) with the parathyroid hormone (PTH) enhancer. Defects in CCND1 are a cause of multiple myeloma (MM) [MIM:254500]. MM is a malignant tumor of plasma cells usually arising in the bone marrow and characterized by diffuse involvement of the skeletal system, hyperglobulinemia, Bence-Jones proteinuria and anemia. Complications of multiple myeloma are bone pain, hypercalcemia, renal failure and spinal cord compression. The aberrant antibodies that are produced lead to impaired humoral immunity and patients have a high prevalence of infection. Amyloidosis may develop in some patients. Multiple myeloma is part of a spectrum of diseases ranging from monoclonal gammopathy of unknown significance (MGUS) to plasma cell leukemia. Note=A chromosomal aberration involving CCND1 is found in multiple myeloma. Translocation t(11;14)(q13;q32) with the IgH locus.

序列相似性

Belongs to the cyclin family. Cyclin D subfamily.

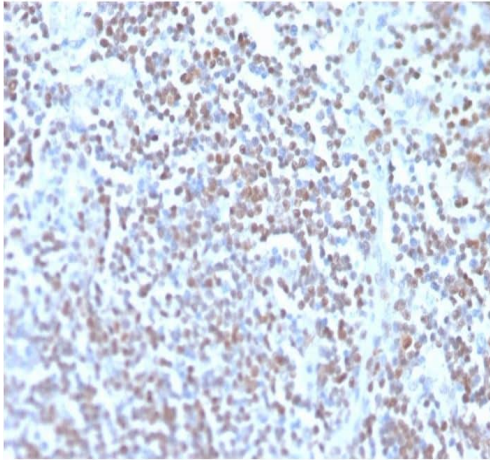
翻译后修饰

Phosphorylation at Thr-286 by MAP kinases is required for ubiquitination and degradation following DNA damage. It probably plays an essential role for recognition by the FBXO31 component of SCF (SKP1-cullin-F-box) protein ligase complex. Ubiquitinated, primarily as 'Lys-48'-linked polyubiquitination. Ubiquitinated by a SCF (SKP1-CUL1-F-box protein) ubiquitin-protein ligase complex containing FBXO4 and CRYAB (By similarity). Following DNA damage it is ubiquitinated by some SCF (SKP1-cullin-F-box) protein ligase complex containing FBXO31. Ubiquitination leads to its degradation and G1 arrest. Deubiquitinated by USP2; leading to stabilize it.

细胞定位

Nucleus.

图片



Paraffin embedded human mantle cell lymphoma tissue stained for Cyclin D1 using ab273608 at 2 µg/ml in immunohistochemical analysis.

Immunohistochemistry (Formalin/PFA-fixed paraffin-embedded sections) - Anti-Cyclin D1 antibody [rCCND1/4752] (ab273608)

Why choose a recombinant antibody?



Research with confidence
Consistent and reproducible results



Long-term and scalable supply
Recombinant technology



Success from the first experiment
Confirmed specificity



Ethical standards compliant
Animal-free production

Anti-Cyclin D1 antibody [rCCND1/4752] (ab273608)

Please note: All products are "FOR RESEARCH USE ONLY. NOT FOR USE IN DIAGNOSTIC PROCEDURES"

Our Abpromise to you: Quality guaranteed and expert technical support

- Replacement or refund for products not performing as stated on the datasheet

- Valid for 12 months from date of delivery
- Response to your inquiry within 24 hours
- We provide support in Chinese, English, French, German, Japanese and Spanish
- Extensive multi-media technical resources to help you
- We investigate all quality concerns to ensure our products perform to the highest standards

If the product does not perform as described on this datasheet, we will offer a refund or replacement. For full details of the Abpromise, please visit <https://www.abcam.cn/abpromise> or contact our technical team.

Terms and conditions

- Guarantee only valid for products bought direct from Abcam or one of our authorized distributors