

Anti-Cyclin B1 antibody [EPR17060] ab181593

敲除验证 重组 RabMAb

[34 References](#) [12 图像](#)

概述

产品名称	Anti-Cyclin B1抗体[EPR17060]
描述	兔单克隆抗体[EPR17060] to Cyclin B1
宿主	Rabbit
经测试应用	适用于: Flow Cyt (Intra), ICC/IF, IHC-P, WB
种属反应性	与反应: Mouse, Human
免疫原	Recombinant fragment. This information is proprietary to Abcam and/or its suppliers.
阳性对照	WB: HeLa, Jurkat, C2C12 and NIH 3T3 cell lysates. IHC-P: Human tonsil, human lung squamous cell carcinoma and mouse colon tissues. ICC/IF: HeLa and C2C12 cells. Flow Cyt (intra): Jurkat cells.
常规说明	<p>This product is a recombinant monoclonal antibody, which offers several advantages including:</p> <ul style="list-style-type: none">- High batch-to-batch consistency and reproducibility- Improved sensitivity and specificity- Long-term security of supply- Animal-free production <p>For more information see here.</p> <p>Our RabMAb[®] technology is a patented hybridoma-based technology for making rabbit monoclonal antibodies. For details on our patents, please refer to RabMAb[®] patents.</p>

性能

形式	Liquid
存放说明	Shipped at 4°C. Store at +4°C short term (1-2 weeks). Upon delivery aliquot. Store at -20°C long term. Avoid freeze / thaw cycle.
存储溶液	Preservative: 0.01% Sodium azide Constituents: 59% PBS, 40% Glycerol (glycerin, glycerine), 0.05% BSA
纯度	Protein A purified
克隆	单克隆
克隆编号	EPR17060
同种型	IgG

应用

The Abpromise guarantee

Abpromise™ 承诺保证使用 ab181593 于以下的经测试应用

“应用说明”部分下显示的仅为推荐的起始稀释度；实际最佳的稀释度/浓度应由使用者检定。

应用	Ab评论	说明
Flow Cyt (Intra)		1/200. ab172730 - Rabbit monoclonal IgG, is suitable for use as an isotype control with this antibody.
ICC/IF		1/500.
IHC-P		1/500. Perform heat mediated antigen retrieval with Tris/EDTA buffer pH 9.0 before commencing with IHC staining protocol.
WB		1/2000. Detects a band of approximately 55 kDa (predicted molecular weight: 48 kDa).

靶标

功能

Essential for the control of the cell cycle at the G2/M (mitosis) transition.

序列相似性

Belongs to the cyclin family. Cyclin AB subfamily.

发展阶段

Accumulates steadily during G2 and is abruptly destroyed at mitosis.

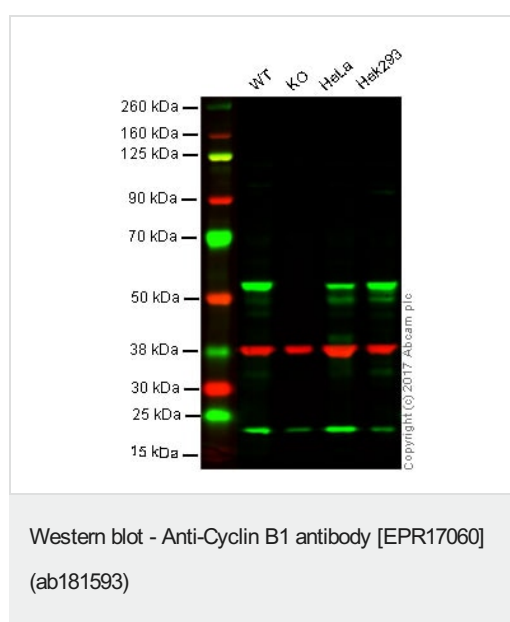
翻译后修饰

Ubiquitinated by the SCF(NIPA) complex during interphase, leading to its destruction. Not ubiquitinated during G2/M phases.

细胞定位

Cytoplasm. Nucleus. Cytoplasm > cytoskeleton > centrosome.

图片



Lane 1: Wild type HAP1 whole cell lysate (20 µg)

Lane 2: CCNB1 (KO) knockout HAP1 whole cell lysate (20 µg)

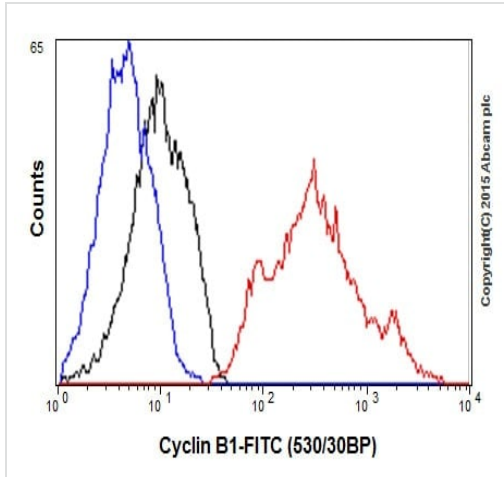
Lane 3: HeLa whole cell lysate (20 µg)

Lane 4: Hek293 whole cell lysate (20 µg)

Lanes 1 - 4: Merged signal (red and green). Green - ab181593 observed at 55 kDa. Red - loading control, **ab8245**, observed at 37 kDa.

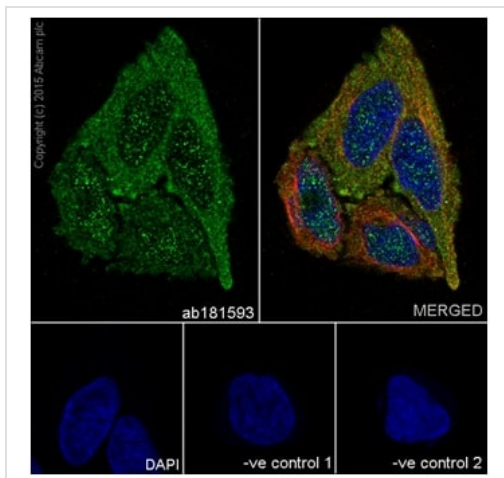
ab181593 was shown to recognize CCNB1 when CCNB1 knockout samples were used, along with additional cross-reactive bands. Wild-type and CCNB1 (KO) knockout samples were subjected to SDS-PAGE. Ab181593 and **ab8245** (Mouse anti GAPDH loading control) were incubated overnight at 4°C at 2000 dilution and 1/10000 dilution respectively. Blots were developed with Goat anti-

Rabbit IgG H&L (IRDye® 800CW) preabsorbed **ab216773** and Goat anti-Mouse IgG H&L (IRDye® 680RD) preabsorbed **ab216776** secondary antibodies at 1/10000 dilution for 1 hour at room temperature before imaging.



Flow Cytometry (Intracellular) - Anti-Cyclin B1 antibody [EPR17060] (ab181593)

Intracellular flow cytometric analysis of 4% paraformaldehyde-fixed Jurkat (Human T cell leukemia cells from peripheral blood) cells labeling Cyclin B1 with ab181593 at 1/200 dilution (red) compared with a rabbit monoclonal IgG isotype control (**ab172730**; black) and an unlabelled control (cells without incubation with primary antibody and secondary antibody; blue). Goat anti rabbit IgG (FITC) at 1/500 dilution was used as the secondary antibody.



Immunocytochemistry/ Immunofluorescence - Anti-Cyclin B1 antibody [EPR17060] (ab181593)

Immunofluorescent analysis of 4% paraformaldehyde-fixed, 0.1% Triton X-100 permeabilized HeLa (Human epithelial cells from cervix adenocarcinoma) cells labeling Cyclin B1 with ab181593 at 1/500 dilution, followed by Goat anti-rabbit IgG (Alexa Fluor® 488) (**ab150077**) secondary antibody at 1/1000 dilution (green).

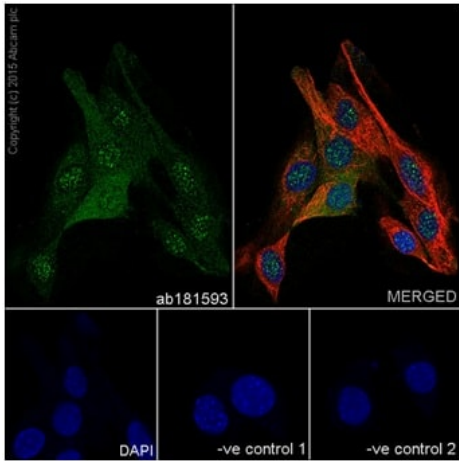
Confocal image showing cytoplasm and weak nuclear staining on HeLa cell line.

The nuclear counter stain is DAPI (blue).

Tubulin is detected with **ab7291** (anti-Tubulin mouse mAb) at 1/1000 dilution and **ab150120** (AlexaFluor®594 Goat anti-Mouse secondary) at 1/1000 dilution (red).

The negative controls are as follows:

1. ab181593 at 1/500 dilution followed by **ab150120** (AlexaFluor®594 Goat anti-Mouse secondary) at 1/1000 dilution.
2. **ab7291** (anti-Tubulin mouse mAb) at 1/1000 dilution followed by **ab150077** (Alexa Fluor®488 Goat Anti-Rabbit IgG H&L) at 1/1000 dilution.



Immunocytochemistry/ Immunofluorescence - Anti-Cyclin B1 antibody [EPR17060] (ab181593)

Immunofluorescent analysis of 4% paraformaldehyde-fixed, 0.1% Triton X-100 permeabilized C2C12 (Mouse myoblast cell line) cells labeling Cyclin B1 with ab181593 at 1/500 dilution, followed by Goat anti-rabbit IgG (Alexa Fluor® 488) ([ab150077](#)) secondary antibody at 1/1000 dilution (green).

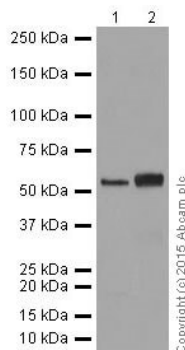
Confocal image showing cytoplasm and nuclear staining on C2C12 cell line.

The nuclear counter stain is DAPI (blue).

Tubulin is detected with [ab7291](#) (anti-Tubulin mouse mAb) at 1/1000 dilution and [ab150120](#) (AlexaFluor®594 Goat anti-Mouse secondary) at 1/1000 dilution (red).

The negative controls are as follows:

1. ab181593 at 1/500 dilution followed by [ab150120](#) (AlexaFluor®594 Goat anti-Mouse secondary) at 1/1000 dilution.
2. [ab7291](#) (anti-Tubulin mouse mAb) at 1/1000 dilution followed by [ab150077](#) (Alexa Fluor®488 Goat Anti-Rabbit IgG H&L) at 1/1000 dilution.



Western blot - Anti-Cyclin B1 antibody [EPR17060] (ab181593)

All lanes : Anti-Cyclin B1 antibody [EPR17060] (ab181593) at 1/10000 dilution

Lane 1 : HeLa (Human epithelial cells from cervix adenocarcinoma) whole cell lysate

Lane 2 : Jurkat (Human T cell leukemia cells from peripheral blood) whole cell lysate

Lysates/proteins at 20 µg per lane.

Secondary

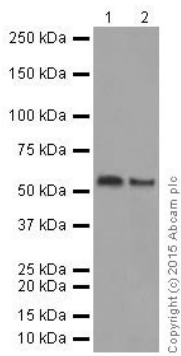
All lanes : Goat Anti-Rabbit IgG H&L (HRP) ([ab97051](#)) at 1/1000 dilution

Predicted band size: 48 kDa

Observed band size: 55 kDa

Exposure time: 30 seconds

5% NFDN/TBST: Blocking and diluting buffer.



Western blot - Anti-Cyclin B1 antibody [EPR17060] (ab181593)

All lanes : Anti-Cyclin B1 antibody [EPR17060] (ab181593) at 1/2000 dilution

Lane 1 : C2C12 (Mouse myoblast cell line) whole cell lysate

Lane 2 : NIH 3T3 (Mouse embryo fibroblast cells) whole cell lysate

Lysates/proteins at 10 µg per lane.

Secondary

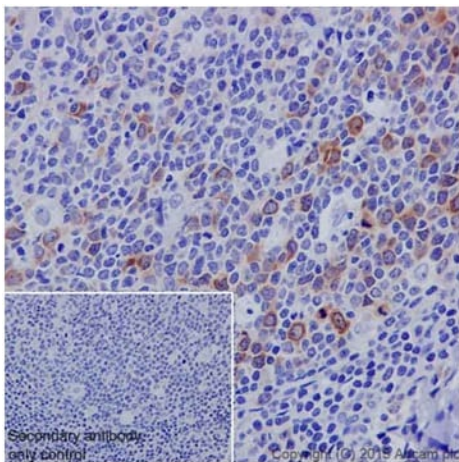
All lanes : Goat Anti-Rabbit IgG H&L (HRP) (**ab97051**) at 1/1000 dilution

Predicted band size: 48 kDa

Observed band size: 55 kDa

Exposure time: 30 seconds

5% NFDm/TBST: Blocking and diluting buffer.

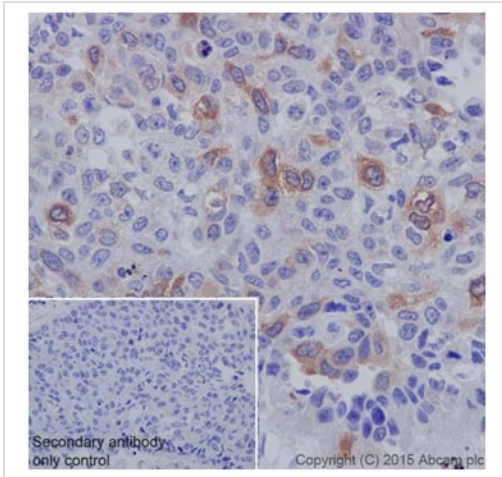


Immunohistochemistry (Formalin/PFA-fixed paraffin-embedded sections) - Anti-Cyclin B1 antibody [EPR17060] (ab181593)

Immunohistochemical analysis of paraffin-embedded Human tonsil tissue labeling Cyclin B1 using ab181593 at 1/500 dilution. A Goat Anti-Rabbit IgG H&L (HRP) (**ab97051**) was used as secondary at 1/500 dilution. Cytoplasm staining on the germinal center of Human tonsil is observed. Counter stained with Hematoxylin.

Negative control: Used PBS instead of primary antibody, secondary antibody is Goat Anti-Rabbit IgG H&L (HRP) (**ab97051**) at 1/500 dilution.

Perform heat mediated antigen retrieval with Tris/EDTA buffer pH 9.0 before commencing with IHC staining protocol.

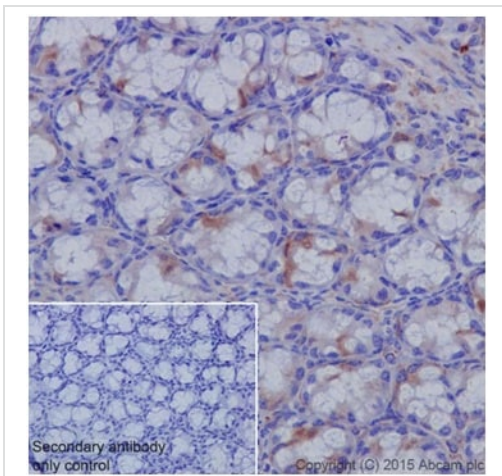


Immunohistochemistry (Formalin/PFA-fixed paraffin-embedded sections) - Anti-Cyclin B1 antibody [EPR17060] (ab181593)

Immunohistochemical analysis of paraffin-embedded Human lung squamous cell carcinoma tissue labeling Cyclin B1 using ab181593 at 1/500 dilution. A Goat Anti-Rabbit IgG H&L (HRP) (**ab97051**) was used as secondary at 1/500 dilution. Cytoplasm staining on cancer cells of Human lung squamous cell carcinoma is observed. Counter stained with Hematoxylin.

Negative control: Used PBS instead of primary antibody, secondary antibody is Goat Anti-Rabbit IgG H&L (HRP) (**ab97051**) at 1/500 dilution.

Perform heat mediated antigen retrieval with Tris/EDTA buffer pH 9.0 before commencing with IHC staining protocol.

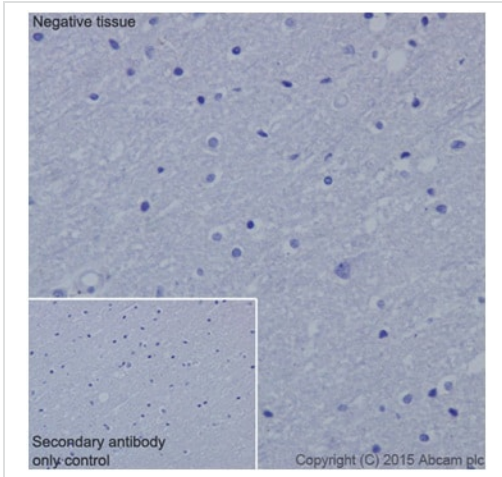


Immunohistochemistry (Formalin/PFA-fixed paraffin-embedded sections) - Anti-Cyclin B1 antibody [EPR17060] (ab181593)

Immunohistochemical analysis of paraffin-embedded Mouse colon tissue labeling Cyclin B1 using ab181593 at 1/500 dilution. A Goat Anti-Rabbit IgG H&L (HRP) (**ab97051**) was used as secondary at 1/500 dilution. Cytoplasm staining on epithelial cells of mouse colon is observed. Counter stained with Hematoxylin.

Negative control: Used PBS instead of primary antibody, secondary antibody is Goat Anti-Rabbit IgG H&L (HRP) (**ab97051**) at 1/500 dilution.

Perform heat mediated antigen retrieval with Tris/EDTA buffer pH 9.0 before commencing with IHC staining protocol.

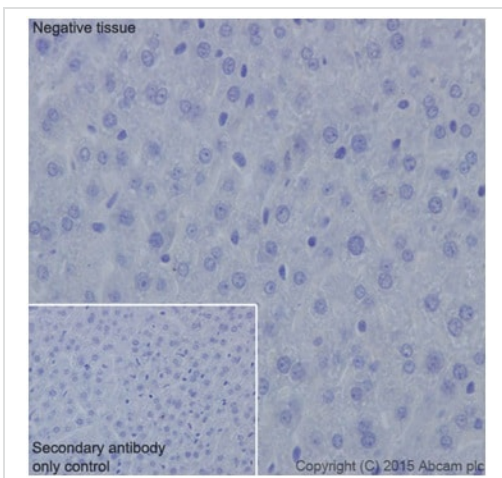


Immunohistochemistry (Formalin/PFA-fixed paraffin-embedded sections) - Anti-Cyclin B1 antibody [EPR17060] (ab181593)

Immunohistochemical analysis of paraffin-embedded Human brain tissue labeling Cyclin B1 using ab181593 at 1/500 dilution. A Goat Anti-Rabbit IgG H&L (HRP) (**ab97051**) was used as secondary at 1/500 dilution. Negative staining on Human brain tissue. Counter stained with Hematoxylin.

Negative control: Used PBS instead of primary antibody, secondary antibody is Goat Anti-Rabbit IgG H&L (HRP) (**ab97051**) at 1/500 dilution.

Perform heat mediated antigen retrieval with Tris/EDTA buffer pH 9.0 before commencing with IHC staining protocol.



Immunohistochemistry (Formalin/PFA-fixed paraffin-embedded sections) - Anti-Cyclin B1 antibody [EPR17060] (ab181593)

Immunohistochemical analysis of paraffin-embedded Mouse liver tissue labeling Cyclin B1 using ab181593 at 1/500 dilution. A Goat Anti-Rabbit IgG H&L (HRP) (**ab97051**) was used as secondary at 1/500 dilution. Negative staining on Mouse liver tissue. Counter stained with Hematoxylin.

Negative control: Used PBS instead of primary antibody, secondary antibody is Goat Anti-Rabbit IgG H&L (HRP) (**ab97051**) at 1/500 dilution.

Perform heat mediated antigen retrieval with Tris/EDTA buffer pH 9.0 before commencing with IHC staining protocol.

Why choose a recombinant antibody?



Research with confidence
Consistent and reproducible results



Long-term and scalable supply
Recombinant technology



Success from the first experiment
Confirmed specificity



Ethical standards compliant
Animal-free production

Anti-Cyclin B1 antibody [EPR17060] (ab181593)

Please note: All products are "FOR RESEARCH USE ONLY. NOT FOR USE IN DIAGNOSTIC PROCEDURES"

Our Abpromise to you: Quality guaranteed and expert technical support

- Replacement or refund for products not performing as stated on the datasheet
- Valid for 12 months from date of delivery
- Response to your inquiry within 24 hours
- We provide support in Chinese, English, French, German, Japanese and Spanish
- Extensive multi-media technical resources to help you
- We investigate all quality concerns to ensure our products perform to the highest standards

If the product does not perform as described on this datasheet, we will offer a refund or replacement. For full details of the Abpromise, please visit <https://www.abcam.cn/abpromise> or contact our technical team.

Terms and conditions

- Guarantee only valid for products bought direct from Abcam or one of our authorized distributors