


Anti-Cyclin A2 antibody [E23.1] - BSA and Azide free ab264078

1 图像

概述

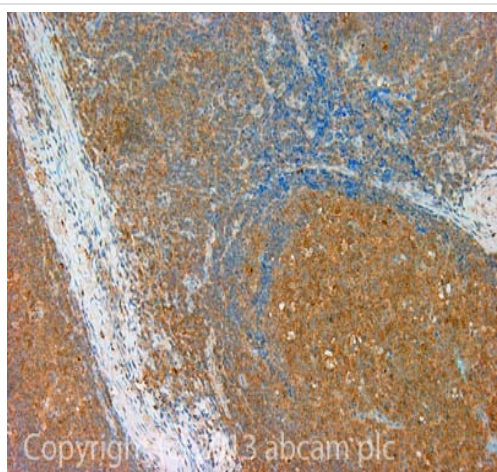
| | |
|-------|---|
| 产品名称 | Anti-Cyclin A2抗体[E23.1] - BSA and Azide free |
| 描述 | 小鼠单克隆抗体[E23.1] to Cyclin A2 - BSA and Azide free |
| 宿主 | Mouse |
| 经测试应用 | 适用于: IHC-P, WB |
| 种属反应性 | 与反应: Mouse, Rat, Human 预测可用于: Chicken, Cow  |
| 免疫原 | Recombinant full length protein. This information is proprietary to Abcam and/or its suppliers. |
| 阳性对照 | IHC-P: Human normal tonsil. |
| 常规说明 | <p>ab264078 is the carrier-free version of ab38.</p> <p>This antibody clone is manufactured by Abcam. If you require a custom buffer formulation or conjugation for your experiments, please contact orders@abcam.com.</p> <p>Our carrier-free antibodies are typically supplied in a PBS-only formulation, purified and free of BSA, sodium azide and glycerol. The carrier-free buffer and high concentration allow for increased conjugation efficiency.</p> <p>This conjugation-ready format is designed for use with fluorochromes, metal isotopes, oligonucleotides, and enzymes, which makes them ideal for antibody labelling, functional and cell-based assays, flow-based assays (e.g. mass cytometry) and Multiplex Imaging applications.</p> <p>Use our conjugation kits for antibody conjugates that are ready-to-use in as little as 20 minutes with <1 minute hands-on-time and 100% antibody recovery: available for fluorescent dyes, HRP, biotin and gold.</p> <p>This product is compatible with the Maxpar[®] Antibody Labeling Kit from Fluidigm, without the need for antibody preparation. Maxpar[®] is a trademark of Fluidigm Canada Inc.</p> <p>The Life Science industry has been in the grips of a reproducibility crisis for a number of years. Abcam is leading the way in addressing this with our range of recombinant monoclonal antibodies and knockout edited cell lines for gold-standard validation. Please check that this product meets your needs before purchasing.</p> <p>If you have any questions, special requirements or concerns, please send us an inquiry and/or contact our Support team ahead of purchase. Recommended alternatives for this product can be found below, along with publications, customer reviews and Q&As</p> |

| | |
|-------------|--|
| 性能 | |
| 形式 | Liquid |
| 存放说明 | Shipped at 4°C. Store at +4°C short term (1-2 weeks). Upon delivery aliquot. Store at +4°C. Do Not Freeze. |
| 存储溶液 | pH: 7.40 Constituent: PBS |
| 无载体 | 是 |
| 纯度 | Protein G purified |
| 克隆 | 单克隆 |
| 克隆编号 | E23.1 |
| 骨髓瘤 | Sp2 |
| 同种型 | IgG2a |
| 轻链类型 | kappa |

| 应用 | | |
|---|------|--|
| <div> <div>The Abpromise guarantee</div> <div>Abpromise™承诺保证使用ab264078于以下的经测试应用</div> </div> <div>“应用说明”部分 下显示的仅为推荐的起始稀释度;实际最佳的稀释度/浓度应由使用者检定。</div> | | |
| 应用 | Ab评论 | 说明 |
| IHC-P | | Use a concentration of 5 µg/ml. |
| WB | | Use a concentration of 5 µg/ml. Detects a band of approximately 50 kDa (predicted molecular weight: 60 kDa). |

| | |
|--------------|---|
| 靶标 | |
| 功能 | Essential for the control of the cell cycle at the G1/S (start) and the G2/M (mitosis) transitions. |
| 序列相似性 | Belongs to the cyclin family. Cyclin AB subfamily. |
| 发展阶段 | Accumulates steadily during G2 and is abruptly destroyed at mitosis. |
| 细胞定位 | Nucleus. Cytoplasm. Cytoplasmic when associated with SCAPER. |

| |
|-----------|
| 图片 |
|-----------|



Immunohistochemistry (Formalin/PFA-fixed paraffin-embedded sections) - Anti-Cyclin A2 antibody [E23.1] - BSA and Azide free (ab264078)

IHC image of Cyclin A staining in Human normal tonsil formalin fixed paraffin embedded tissue section, performed on a Leica Bond™ system using the standard protocol F. The section was pre-treated using heat mediated antigen retrieval with sodium citrate buffer (pH6, epitope retrieval solution 1) for 20 mins. The section was then incubated with **ab38**, 10µg/ml, for 15 mins at room temperature and detected using an HRP conjugated compact polymer system. DAB was used as the chromogen. The section was then counterstained with haematoxylin and mounted with DPX.

For other IHC staining systems (automated and non-automated) customers should optimize variable parameters such as antigen retrieval conditions, primary antibody concentration and antibody incubation times.

This data was developed using the same antibody clone in a different buffer formulation containing PBS and Sodium Azide (**ab38**)

Please note: All products are "FOR RESEARCH USE ONLY. NOT FOR USE IN DIAGNOSTIC PROCEDURES"

Our Abpromise to you: Quality guaranteed and expert technical support

- Replacement or refund for products not performing as stated on the datasheet
- Valid for 12 months from date of delivery
- Response to your inquiry within 24 hours
- We provide support in Chinese, English, French, German, Japanese and Spanish
- Extensive multi-media technical resources to help you
- We investigate all quality concerns to ensure our products perform to the highest standards

If the product does not perform as described on this datasheet, we will offer a refund or replacement. For full details of the Abpromise, please visit <https://www.abcam.cn/abpromise> or contact our technical team.

Terms and conditions

- Guarantee only valid for products bought direct from Abcam or one of our authorized distributors