


Anti-CX3CR1 antibody ab8020

★★★★★ 7 Abreviews 14 References 3 图像

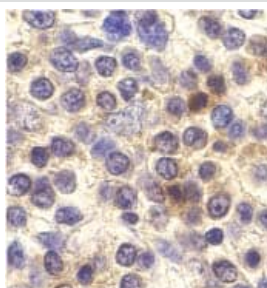
概述	
产品名称	Anti-CX3CR1抗体
描述	兔多克隆抗体to CX3CR1
宿主	Rabbit
经测试应用	适用于: IHC-P, WB 不适用于: ICC/IF
种属反应性	与反应: Human 预测可用于: Mouse, Rat 
免疫原	Synthetic peptide, corresponding to amino acids 175-189 of Human CX3CR 1.
阳性对照	THP-1 cell lysate
常规说明	<p>The Life Science industry has been in the grips of a reproducibility crisis for a number of years. Abcam is leading the way in addressing this with our range of recombinant monoclonal antibodies and knockout edited cell lines for gold-standard validation. Please check that this product meets your needs before purchasing.</p> <p>If you have any questions, special requirements or concerns, please send us an inquiry and/or contact our Support team ahead of purchase. Recommended alternatives for this product can be found below, along with publications, customer reviews and Q&As</p>
性能	
形式	Liquid
存放说明	Shipped at 4°C. Store at +4°C short term (1-2 weeks). Store at +4°C.
存储溶液	pH: 7.2 Preservative: 0.02% Sodium azide
纯度	Affinity purified
克隆	多克隆
同种型	IgG
应用	

应用	Ab评论	说明
IHC-P	★★★★★ (1)	Use a concentration of 10 µg/ml.
WB	★★★★★ (3)	Use a concentration of 1 µg/ml. Predicted molecular weight: 50 kDa.

靶标

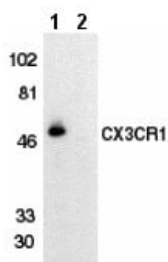
图片

ab273713 (knockout cell lysate **ab275510**). To generate this image, wild-type and CX3CR1 knockout THP-1 cell lysates were analysed. First, samples were run on an SDS-PAGE gel then transferred onto a nitrocellulose membrane. Membranes were blocked in 5 % milk in TBS-0.1 % Tween[®] 20 (TBS-T) before incubation with primary antibodies overnight at 4 °C. Blots were washed four times in TBS-T, incubated with secondary antibodies for 1 h at room temperature, washed again four times then imaged. Secondary antibodies used were Goat anti-Rabbit IgG H&L (IRDye[®] 800CW) preabsorbed (**ab216773**) and Goat anti-Mouse IgG H&L (IRDye[®] 680RD) preabsorbed (**ab216776**) at 1/20000 dilution.



Immunohistochemistry (Formalin/PFA-fixed paraffin-embedded sections) - Anti-CX3CR1 antibody (ab8020)

ab8020 at 10µg/ml staining CX3CR1 in human spleen cells by IHC



Western blot - Anti-CX3CR1 antibody (ab8020)

All lanes : Anti-CX3CR1 antibody (ab8020) at 1/500 dilution

Lane 1 : THP-1 cell lysate with absence of blocking peptide

Lane 2 : THP-1 cell lysate with presence of blocking peptide

Predicted band size: 50 kDa

Observed band size: 50 kDa

Please note: All products are "FOR RESEARCH USE ONLY. NOT FOR USE IN DIAGNOSTIC PROCEDURES"

Our Abpromise to you: Quality guaranteed and expert technical support

- Replacement or refund for products not performing as stated on the datasheet
- Valid for 12 months from date of delivery
- Response to your inquiry within 24 hours
- We provide support in Chinese, English, French, German, Japanese and Spanish
- Extensive multi-media technical resources to help you

- We investigate all quality concerns to ensure our products perform to the highest standards

If the product does not perform as described on this datasheet, we will offer a refund or replacement. For full details of the Abpromise, please visit <https://www.abcam.cn/abpromise> or contact our technical team.

Terms and conditions

- Guarantee only valid for products bought direct from Abcam or one of our authorized distributors