

### Anti-CTGF antibody [EPR20728] ab209780

**重组** RabMAb

**13 References** [4 图像](#)

#### 概述

产品名称	Anti-CTGF抗体[EPR20728]
描述	兔单克隆抗体[EPR20728] to CTGF
宿主	Rabbit
经测试应用	<b>适用于:</b> WB, IP
种属反应性	<b>与反应:</b> Mouse, Human
免疫原	Recombinant fragment. This information is proprietary to Abcam and/or its suppliers.
阳性对照	WB: Starved NIH/3T3 cells treated with TGF- $\beta$ 1 ( <a href="#">ab50036</a> ) and Heparin sodium salt and HepG2 whole cell lysate. IP: HepG2 whole cell lysate.
常规说明	<p>This product is a recombinant monoclonal antibody, which offers several advantages including:</p> <ul style="list-style-type: none"> <li>- High batch-to-batch consistency and reproducibility</li> <li>- Improved sensitivity and specificity</li> <li>- Long-term security of supply</li> <li>- Animal-free production</li> </ul> <p>For more information <a href="#">see here</a>.</p> <p>Our RabMAb<sup>®</sup> technology is a patented hybridoma-based technology for making rabbit monoclonal antibodies. For details on our patents, please refer to <a href="#">RabMAb<sup>®</sup> patents</a>.</p>

#### 性能

形式	Liquid
存放说明	Shipped at 4°C. Store at +4°C short term (1-2 weeks). Upon delivery aliquot. Store at -20°C long term. Avoid freeze / thaw cycle.
存储溶液	<p>pH: 7.2</p> <p>Preservative: 0.01% Sodium azide</p> <p>Constituents: PBS, 40% Glycerol (glycerin, glycerine), 0.05% BSA</p>
纯度	Protein A purified
克隆	单克隆
克隆编号	EPR20728
同种型	IgG

应用

**The Abpromise guarantee**      **Abpromise™**承诺保证使用ab209780于以下的经测试应用

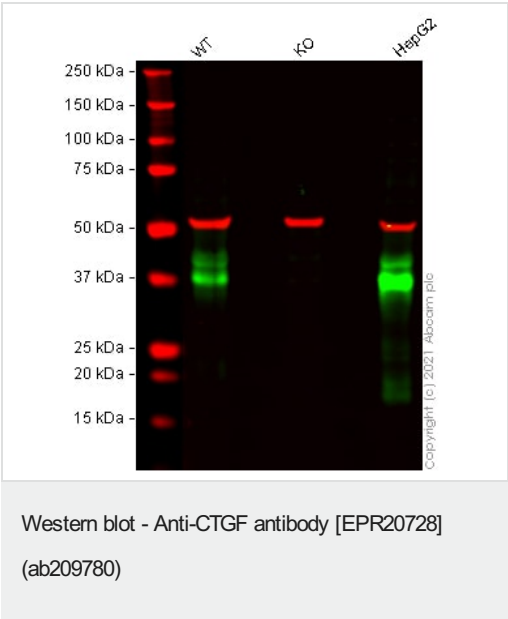
“应用说明”部分 下显示的仅为推荐的起始稀释度;实际最佳的稀释度/浓度应由使用者检定。

应用	Ab评论	说明
WB		1/1000. Predicted molecular weight: 38 kDa.
IP		1/30.

靶标

功能	Major connective tissue mitogen secreted by vascular endothelial cells. Promotes proliferation and differentiation of chondrocytes. Mediates heparin- and divalent cation-dependent cell adhesion in many cell types including fibroblasts, myofibroblasts, endothelial and epithelial cells. Enhances fibroblast growth factor-induced DNA synthesis.
组织特异性	Expressed in bone marrow and thymic cells. Also expressed one of two Wilms tumors tested.
序列相似性	Belongs to the CCN family. Contains 1 CTCK (C-terminal cystine knot-like) domain. Contains 1 IGFBP N-terminal domain. Contains 1 TSP type-1 domain. Contains 1 VWFC domain.
细胞定位	Secreted > extracellular space > extracellular matrix. Secreted.

图片



**All lanes :** Anti-CTGF antibody [EPR20728] (ab209780) at 1/1000 dilution

**Lane 1 :** Wild-type U-2 OS cell lysate at 20 µg

**Lanes 2 & 4 :** Empty

**Lane 3 :** CTGF knockout U-2 OS cell lysate at 20 µg

**Lane 5 :** HepG2 cell lysate at 20 µg

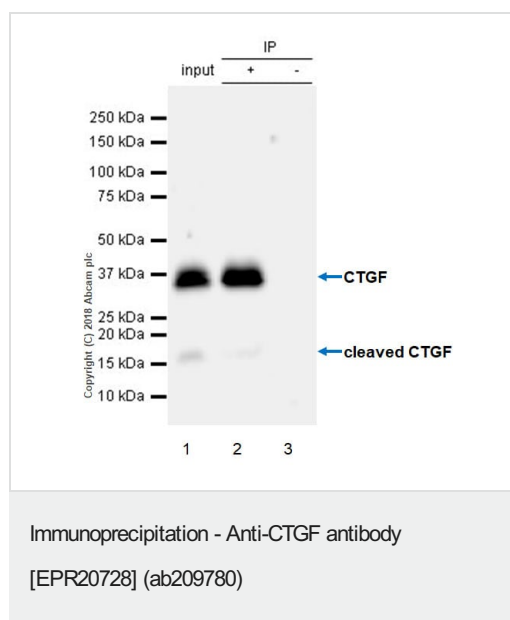
Performed under reducing conditions.

**Predicted band size:** 38 kDa

**Observed band size:** 38 kDa

False colour image of Western blot: Anti-CTGF antibody [EPR20728] staining at 1/1000 dilution, shown in green; Mouse anti-Alpha Tubulin [DM1A] (**ab7291**) loading control staining at

1/20000 dilution, shown in red. In Western blot, ab209780 was shown to bind specifically to CTGF. A band was observed at 38 kDa in wild-type U-2 OS cell lysates with no signal observed at this size in CTGF knockout cell line **ab261880** (knockout cell lysate **ab261689**). To generate this image, wild-type and CTGF knockout U-2 OS cell lysates were analysed. First, samples were run on an SDS-PAGE gel then transferred onto a nitrocellulose membrane. Membranes were blocked in 5 % milk in TBS-0.1 % Tween<sup>®</sup> 20 (TBS-T) before incubation with primary antibodies overnight at 4 °C. Blots were washed four times in TBS-T, incubated with secondary antibodies for 1 h at room temperature, washed again four times then imaged. Secondary antibodies used were Goat anti-Rabbit IgG H&L (IRDye<sup>®</sup> 800CW) preabsorbed (**ab216773**) and Goat anti-Mouse IgG H&L (IRDye<sup>®</sup> 680RD) preabsorbed (**ab216776**) at 1/20000 dilution.



CTGF was immunoprecipitated from 0.35 mg HepG2 (human hepatocellular carcinoma epithelial cell) whole cell lysate with ab209780 at 1/30 dilution. Western blot was performed from the immunoprecipitate using ab209780 at 1/1000 dilution. VeriBlot for IP Detection Reagent (HRP) (**ab131366**), was used for detection at 1/5000 dilution.

**Lane 1:** HepG2 (human hepatocellular carcinoma epithelial cell) whole cell lysate 10 µg (Input).

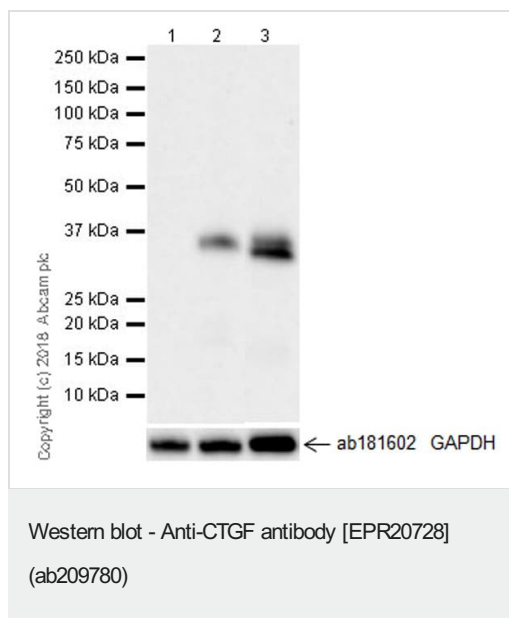
**Lane 2:** ab209780 IP in HepG2 whole cell lysate (+).

**Lane 3:** Rabbit monoclonal IgG (**ab172730**) instead of ab209780 in HepG2 whole cell lysate (-).

Blocking and dilution buffer and concentration: 5% NFDm/TBST.

Exposure time: 3 minutes.

The molecular mass observed is consistent with the literature.  
(PMID:27126736)



**All lanes :** Anti-CTGF antibody [EPR20728] (ab209780) at 1/1000 dilution

**Lane 1 :** NIH/3T3 (mouse embryonic fibroblast) starved for 18 hours, whole cell lysate

**Lane 2 :** NIH/3T3 starved for 18 hours, then treated with 10 ng/ml transforming growth factor- $\beta$  (TGF- $\beta$ 1, [ab50036](#)) and 50  $\mu$ g/ml Heparin sodium salt for 24 hours, whole cell lysate

**Lane 3 :** HepG2 (human hepatocellular carcinoma epithelial cell), whole cell lysate

Lysates/proteins at 20  $\mu$ g per lane.

### Secondary

**All lanes :** Goat Anti-Rabbit IgG H&L (HRP) ([ab97051](#)) at 1/100000 dilution

**Predicted band size:** 38 kDa

**Blocking/Dilution buffer and concentration:** 5% NFDM/TBST.

The level of CTGF expression can be induced by TGF beta treatment (PMID: 17786299).

CTGF is constitutively expressed in HepG2 cells (PMID:15886528).

Why choose a recombinant antibody?

<p><b>Research with confidence</b> Consistent and reproducible results</p>	<p><b>Long-term and scalable supply</b> Recombinant technology</p>
<p><b>Success from the first experiment</b> Confirmed specificity</p>	<p><b>Ethical standards compliant</b> Animal-free production</p>

Anti-CTGF antibody [EPR20728] (ab209780)

**Please note:** All products are "FOR RESEARCH USE ONLY. NOT FOR USE IN DIAGNOSTIC PROCEDURES"

### **Our Abpromise to you: Quality guaranteed and expert technical support**

---

- Replacement or refund for products not performing as stated on the datasheet
- Valid for 12 months from date of delivery
- Response to your inquiry within 24 hours
  
- We provide support in Chinese, English, French, German, Japanese and Spanish
- Extensive multi-media technical resources to help you
- We investigate all quality concerns to ensure our products perform to the highest standards

If the product does not perform as described on this datasheet, we will offer a refund or replacement. For full details of the Abpromise, please visit <https://www.abcam.cn/abpromise> or contact our technical team.

### **Terms and conditions**

---

- Guarantee only valid for products bought direct from Abcam or one of our authorized distributors