


### Anti-CSRP3 antibody [EPR12615(B)] ab172952

**重组 RabMAb**

#### 9 图像

#### 概述

<b>产品名称</b>	Anti-CSRP3抗体[EPR12615(B)]
<b>描述</b>	兔单克隆抗体[EPR12615(B)] to CSRP3
<b>宿主</b>	Rabbit
<b>经测试应用</b>	<b>适用于:</b> WB, IHC-P, IP <b>不适用于:</b> ICC/IF
<b>种属反应性</b>	<b>与反应:</b> Human <b>预测可用于:</b> Mouse, Rat, Cow 
<b>免疫原</b>	Synthetic peptide within Human CSRP3 aa 50-150 (Cysteine residue). The exact sequence is proprietary. Database link: <a href="#">P50461</a>
<b>阳性对照</b>	Fetal heart, human skeletal muscle, fetal muscle lysates, human heart tissue, human uterus tissue
<b>常规说明</b>	This product is a recombinant monoclonal antibody, which offers several advantages including: <ul style="list-style-type: none"> <li>- High batch-to-batch consistency and reproducibility</li> <li>- Improved sensitivity and specificity</li> <li>- Long-term security of supply</li> <li>- Animal-free production</li> </ul> For more information <a href="#">see here</a> . Our RabMAb <sup>®</sup> technology is a patented hybridoma-based technology for making rabbit monoclonal antibodies. For details on our patents, please refer to <a href="#">RabMAb<sup>®</sup> patents</a> .

#### 性能

<b>形式</b>	Liquid
<b>存放说明</b>	Shipped at 4°C. Store at +4°C short term (1-2 weeks). Upon delivery aliquot. Store at -20°C long term. Avoid freeze / thaw cycle.
<b>存储溶液</b>	pH: 7.20 Preservative: 0.01% Sodium azide Constituents: 9% PBS, 40% Glycerol (glycerin, glycerine), 0.05% BSA, 50% Tissue culture supernatant
<b>纯度</b>	Protein A purified

克隆	单克隆
克隆编号	EPR12615(B)
同种型	IgG

## 应用

**The Abpromise guarantee** **Abpromise™** 承诺保证使用ab172952于以下的经测试应用

“应用说明”部分下显示的仅为推荐的起始稀释度;实际最佳的稀释度/浓度应由使用者检定。

应用	Ab评论	说明
WB		1/1000 - 1/10000. Predicted molecular weight: 21 kDa.
IHC-P		1/100 - 1/250. Perform heat mediated antigen retrieval via the pressure cooker method before commencing with IHC staining protocol.
IP		1/10 - 1/100.

**应用说明** Is unsuitable for ICC/IF.

## 靶标

**功能** Positive regulator of myogenesis. Plays a crucial and specific role in the organization of cytosolic structures in cardiomyocytes. Could play a role in mechanical stretch sensing. May be a scaffold protein that promotes the assembly of interacting proteins at Z-line structures. It is essential for calcineurin anchorage to the Z line. Required for stress-induced calcineurin-NFAT activation.

**组织特异性** Cardiac and slow-twitch skeletal muscles.

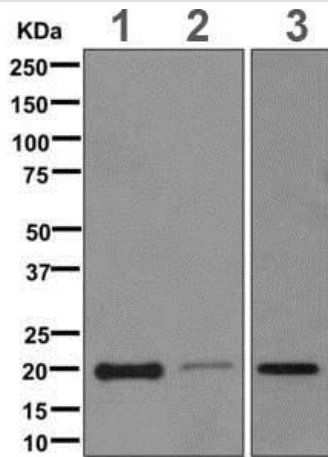
**疾病相关** Defects in CSRP3 are the cause of cardiomyopathy dilated type 1M (CMD1M) [MIM:607482]. Dilated cardiomyopathy is a disorder characterized by ventricular dilation and impaired systolic function, resulting in congestive heart failure and arrhythmia. Patients are at risk of premature death.

Defects in CSRP3 are the cause of cardiomyopathy familial hypertrophic type 12 (CMH12) [MIM:612124]. Familial hypertrophic cardiomyopathy is a hereditary heart disorder characterized by ventricular hypertrophy, which is usually asymmetric and often involves the interventricular septum. The symptoms include dyspnea, syncope, collapse, palpitations, and chest pain. They can be readily provoked by exercise. The disorder has inter- and intrafamilial variability ranging from benign to malignant forms with high risk of cardiac failure and sudden cardiac death.

**序列相似性** Contains 2 LIM zinc-binding domains.

**细胞定位** Nucleus. Cytoplasm. Cytoplasm > cytoskeleton. Cytoplasm > myofibril > sarcomere > Z line. Mainly cytoplasmic (By similarity). In the nucleus it associates with the actin cytoskeleton (Potential). In the Z line, found associated with GLRX3.

## 图片



Western blot - Anti-CSRP3 antibody [EPR12615(B)] (ab172952)

**All lanes** : Anti-CSRP3 antibody [EPR12615(B)] (ab172952) at 1/1000 dilution

**Lane 1** : Fetal heart

**Lane 2** : Human skeletal muscle

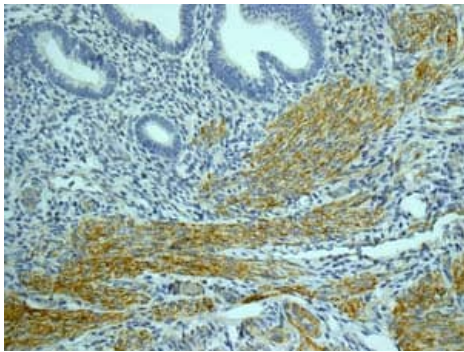
**Lane 3** : Fetal muscle

Lysates/proteins at 10 µg per lane.

**Secondary**

**All lanes** : HRP labelled goat anti-rabbit antibody at 1/2000 dilution

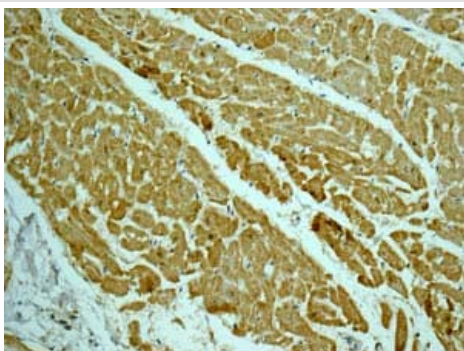
**Predicted band size:** 21 kDa



Immunohistochemistry (Formalin/PFA-fixed paraffin-embedded sections) - Anti-CSRP3 antibody [EPR12615(B)] (ab172952)

Immunohistochemical analysis of paraffin-embedded Human uterus tissue labeling CSRP3 with ab172952 at 1/1000 dilution.

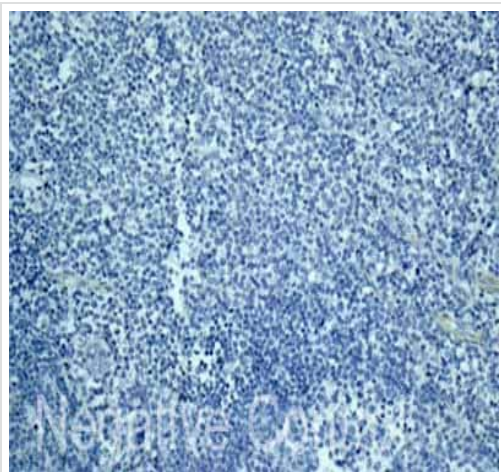
Perform heat mediated antigen retrieval via the pressure cooker method before commencing with IHC staining protocol.



Immunohistochemistry (Formalin/PFA-fixed paraffin-embedded sections) - Anti-CSRP3 antibody [EPR12615(B)] (ab172952)

Immunohistochemical analysis of paraffin-embedded Human heart tissue labeling CSRP3 with **ab172592** at 1/1000 dilution.

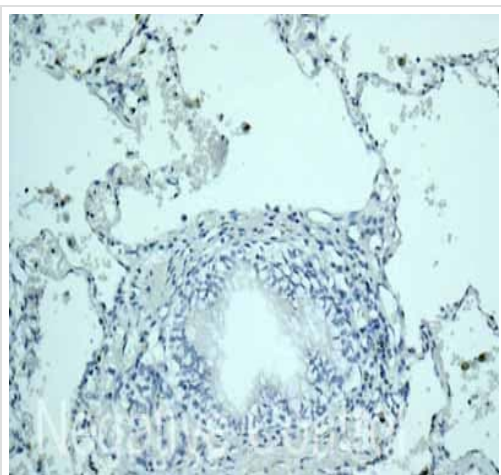
Perform heat mediated antigen retrieval via the pressure cooker method before commencing with IHC staining protocol.



Immunohistochemistry (Formalin/PFA-fixed paraffin-embedded sections) - Anti-CSRP3 antibody [EPR12615(B)] (ab172952)

ab172952 showing -ve staining in Human normal tonsil tissue.

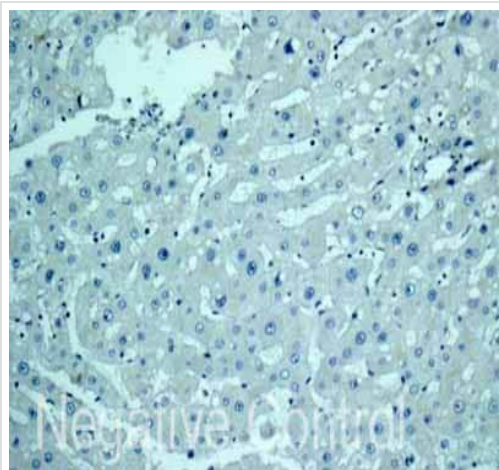
Perform heat mediated antigen retrieval via the pressure cooker method before commencing with IHC staining protocol.



Immunohistochemistry (Formalin/PFA-fixed paraffin-embedded sections) - Anti-CSRP3 antibody [EPR12615(B)] (ab172952)

ab172952 showing -ve staining in Human normal lung tissue.

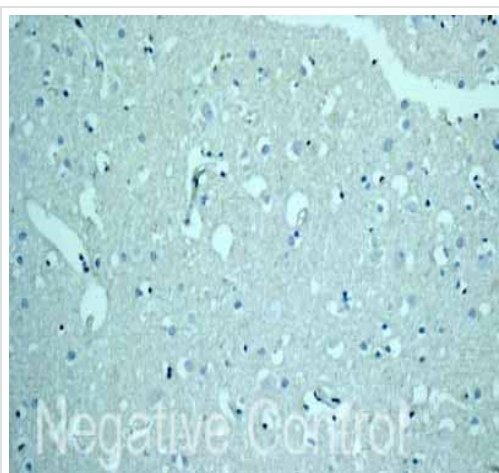
Perform heat mediated antigen retrieval via the pressure cooker method before commencing with IHC staining protocol.



Immunohistochemistry (Formalin/PFA-fixed paraffin-embedded sections) - Anti-CSRP3 antibody  
[EPR12615(B)] (ab172952)

ab172952 showing -ve staining in Human normal liver tissue.

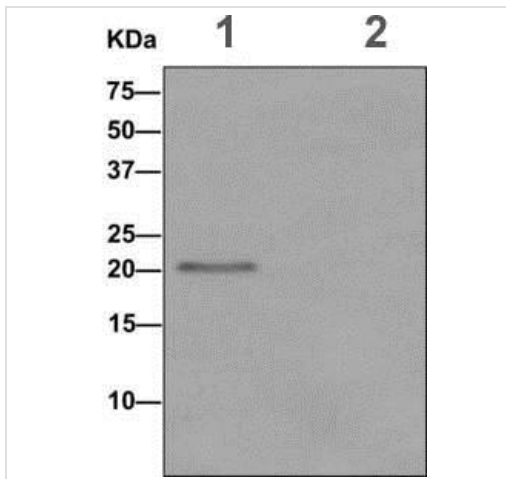
Perform heat mediated antigen retrieval via the pressure cooker method before commencing with IHC staining protocol.



Immunohistochemistry (Formalin/PFA-fixed paraffin-embedded sections) - Anti-CSRP3 antibody  
[EPR12615(B)] (ab172952)

ab172952 showing -ve staining in Human normal brain tissue.





Perform heat mediated antigen retrieval via the pressure cooker method before commencing with IHC staining protocol.



Western blot analysis on immunoprecipitation pellet from (1) fetal heart lysate or (2) 1X PBS (negative control) using ab172952, and HRP-conjugated anti-rabbit IgG preferentially detecting the non-reduced form of rabbit IgG.

Immunoprecipitation - Anti-CSRP3 antibody  
[EPR12615(B)] (ab172952)

Why choose a recombinant antibody?

 <p><b>Research with confidence</b> Consistent and reproducible results</p>	 <p><b>Long-term and scalable supply</b> Recombinant technology</p>
 <p><b>Success from the first experiment</b> Confirmed specificity</p>	 <p><b>Ethical standards compliant</b> Animal-free production</p>

Anti-CSRP3 antibody [EPR12615(B)] (ab172952)

**Please note:** All products are "FOR RESEARCH USE ONLY. NOT FOR USE IN DIAGNOSTIC PROCEDURES"

### Our Abpromise to you: Quality guaranteed and expert technical support

- Replacement or refund for products not performing as stated on the datasheet
- Valid for 12 months from date of delivery
- Response to your inquiry within 24 hours
- We provide support in Chinese, English, French, German, Japanese and Spanish
- Extensive multi-media technical resources to help you
- We investigate all quality concerns to ensure our products perform to the highest standards

If the product does not perform as described on this datasheet, we will offer a refund or replacement. For full details of the Abpromise, please visit <https://www.abcam.cn/abpromise> or contact our technical team.

## Terms and conditions

---

- Guarantee only valid for products bought direct from Abcam or one of our authorized distributors