

### Anti-CRM1 antibody [EPR14123(B)] ab180144

**重组** RabMAb

#### 5 图像

#### 概述

产品名称	Anti-CRM1抗体[EPR14123(B)]
描述	兔单克隆抗体[EPR14123(B)] to CRM1
宿主	Rabbit
经测试应用	<b>适用于:</b> Flow Cyt (Intra), WB, ICC/IF
种属反应性	<b>与反应:</b> Human <b>预测可用于:</b> Mouse, Rat 
免疫原	Synthetic peptide within Human CRM1 aa 50-150. The exact sequence is proprietary. Database link: <a href="#">Q14980</a>
阳性对照	K562, HeLa, and Jurkat cell lysate. K562 and HeLa cells.
常规说明	This product is a recombinant monoclonal antibody, which offers several advantages including: <ul style="list-style-type: none"> <li>- High batch-to-batch consistency and reproducibility</li> <li>- Improved sensitivity and specificity</li> <li>- Long-term security of supply</li> <li>- Animal-free production</li> </ul> For more information <a href="#">see here</a> . Our RabMAb <sup>®</sup> technology is a patented hybridoma-based technology for making rabbit monoclonal antibodies. For details on our patents, please refer to <a href="#">RabMAb<sup>®</sup> patents</a> .

#### 性能

形式	Liquid
存放说明	Shipped at 4°C. Store at +4°C short term (1-2 weeks). Upon delivery aliquot. Store at -20°C long term. Avoid freeze / thaw cycle.
存储溶液	Preservative: 0.01% Sodium azide Constituents: 59% PBS, 0.05% BSA, 40% Glycerol (glycerin, glycerine)
纯度	Tissue culture supernatant
克隆	单克隆
克隆编号	EPR14123(B)
同种型	IgG

## 应用

### The Abpromise guarantee

**Abpromise™** 承诺保证使用ab180144于以下的经测试应用

“应用说明”部分 下显示的仅为推荐的起始稀释度;实际最佳的稀释度/浓度应由使用者检定。

应用	Ab评论	说明
Flow Cyt (Intra)		1/200. <b>ab172730</b> - Rabbit monoclonal IgG, is suitable for use as an isotype control with this antibody.
WB		1/1000 - 1/2000. Detects a band of approximately 110 kDa (predicted molecular weight: 123 kDa).
ICC/IF		1/500.

## 靶标

### 功能

Mediates the nuclear export of cellular proteins (cargos) bearing a leucine-rich nuclear export signal (NES) and of RNAs. In the nucleus, in association with RANBP3, binds cooperatively to the NES on its target protein and to the GTPase RAN in its active GTP-bound form (Ran-GTP). Docking of this complex to the nuclear pore complex (NPC) is mediated through binding to nucleoporins. Upon transit of an nuclear export complex into the cytoplasm, disassembling of the complex and hydrolysis of Ran-GTP to Ran-GDP (induced by RANBP1 and RANGAP1, respectively) cause release of the cargo from the export receptor. The directionality of nuclear export is thought to be conferred by an asymmetric distribution of the GTP- and GDP-bound forms of Ran between the cytoplasm and nucleus. Involved in U3 snoRNA transport from Cajal bodies to nucleoli. Binds to late precursor U3 snoRNA bearing a TMG cap. Several viruses, among them HIV-1, HTLV-1 and influenza A use it to export their unspliced or incompletely spliced RNAs out of the nucleus. Interacts with, and mediates the nuclear export of HIV-1 Rev and HTLV-1 Rex proteins. Involved in HTLV-1 Rex multimerization.

### 组织特异性

Expressed in heart, brain, placenta, lung, liver, skeletal muscle, pancreas, spleen, thymus, prostate, testis, ovary, small intestine, colon and peripheral blood leukocytes. Not expressed in the kidney.

### 序列相似性

Belongs to the exportin family.  
Contains 10 HEAT repeats.  
Contains 1 importin N-terminal domain.

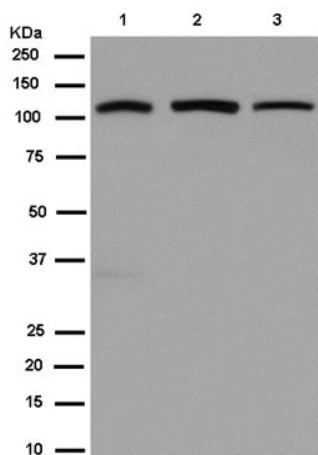
### 翻译后修饰

Phosphorylated upon DNA damage, probably by ATM or ATR.

### 细胞定位

Cytoplasm. Nucleus > nucleoplasm. Nucleus > Cajal body. Nucleus > nucleolus. Located in the nucleoplasm, Cajal bodies and nucleoli. Shuttles between the nucleus/nucleolus and the cytoplasm.

## 图片



Western blot - Anti-CRM1 antibody [EPR14123(B)] (ab180144)

**All lanes :** Anti-CRM1 antibody [EPR14123(B)] (ab180144) at 1/2000 dilution

**Lane 1 :** K562 cell lysate

**Lane 2 :** HeLa cell lysate

**Lane 3 :** Jurkat cell lysate

Lysates/proteins at 20 µg per lane.

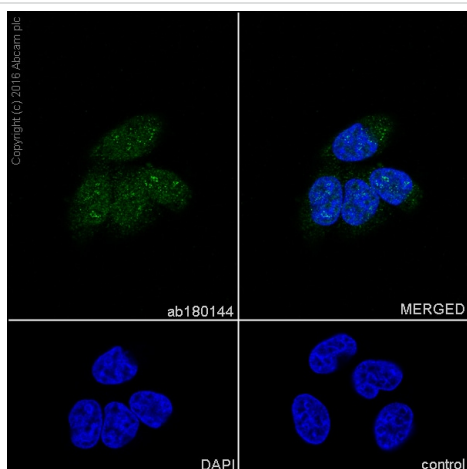
#### Secondary

**All lanes :** Goat Anti-Rabbit IgG, (H+L), Peroxidase conjugated at 1/1000 dilution

**Predicted band size:** 123 kDa

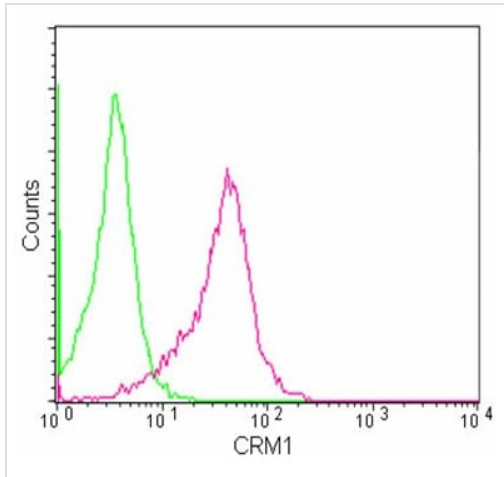
**Observed band size:** 110 kDa

Blocking buffer and concentration: 5%NFDM/TBST



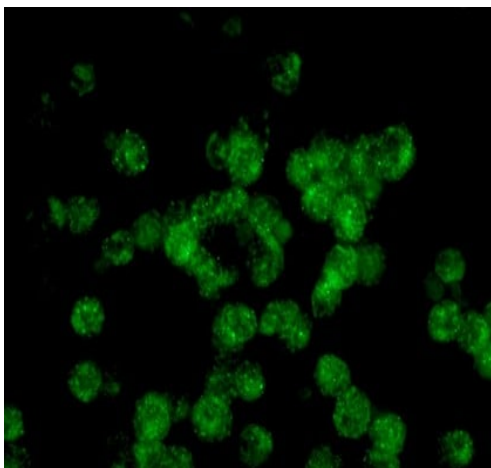
Immunocytochemistry/ Immunofluorescence - Anti-CRM1 antibody [EPR14123(B)] (ab180144)

Immunocytochemistry/Immunofluorescence analysis of HeLa (Human epithelial cell line from cervix adenocarcinoma) labeling CRM1 with Purified ab180144 at 1/500 dilution. Cells were fixed with 4% PFA and permeabilized with 0.1% tritonX-100. **ab150077** Goat anti rabbit IgG (Alexa Fluor® 488) at 1/1000 was used as the secondary antibody. Nuclei were counterstained with DAPI. PBS was used instead of the primary antibody as the negative control.



Flow Cytometry (Intracellular) - Anti-CRM1 antibody  
[EPR14123(B)] (ab180144)

Intracellular flow cytometric analysis of 2% paraformaldehyde fixed HeLa cells labeling CRM1 with ab180144 at 1/200. Secondary antibody Goat anti rabbit IgG (FITC) at 1/75. Isotype control Rabbit IgG.



Immunocytochemistry/ Immunofluorescence - Anti-CRM1 antibody [EPR14123(B)] (ab180144)

Immunofluorescent analysis of 20°C acetone fixed K562 cells labeling CRM1 with ab180144 at 1/500 dilution. Secondary antibody Goat anti rabbit IgG (Dylight 488) .

### Why choose a recombinant antibody?



**Research with confidence**  
Consistent and reproducible results



**Long-term and scalable supply**  
Recombinant technology



**Success from the first experiment**  
Confirmed specificity



**Ethical standards compliant**  
Animal-free production

Anti-CRM1 antibody [EPR14123(B)] (ab180144)

**Please note:** All products are "FOR RESEARCH USE ONLY. NOT FOR USE IN DIAGNOSTIC PROCEDURES"

### Our Abpromise to you: Quality guaranteed and expert technical support

---

- Replacement or refund for products not performing as stated on the datasheet
- Valid for 12 months from date of delivery
- Response to your inquiry within 24 hours
- We provide support in Chinese, English, French, German, Japanese and Spanish
- Extensive multi-media technical resources to help you
- We investigate all quality concerns to ensure our products perform to the highest standards

If the product does not perform as described on this datasheet, we will offer a refund or replacement. For full details of the Abpromise, please visit <https://www.abcam.cn/abpromise> or contact our technical team.

### Terms and conditions

---

- Guarantee only valid for products bought direct from Abcam or one of our authorized distributors