


Anti-CRLR antibody - Cytoplasmic domain ab140761

★★★★★ [3 Abreviews](#) [1 References](#) [1 图像](#)

概述

产品名称	Anti-CRLR抗体-细胞质domain
描述	兔多克隆抗体to CRLR -细胞质domain
宿主	Rabbit
特异性	BLAST analysis of the peptide immunogen showed no homology with other Human proteins, except CALCR (56%).
经测试应用	适用于: IHC-P
种属反应性	与反应: Human 预测可用于: Mouse, Rat, Rabbit, Goat, Horse, Guinea pig, Hamster, Cow, Dog, Pig, Xenopus laevis, Pufferfish, Monkey, Zebrafish, Gorilla, Opossum, Common marmoset, Orangutan, Bat, Elephant 
免疫原	A 16 amino acid synthetic peptide from the third cytoplasmic domain of Human CRLR (NP_005786.1).
阳性对照	Human colon tissue (submucosal plexus and submucosal vessels).
常规说明	<p>The Life Science industry has been in the grips of a reproducibility crisis for a number of years. Abcam is leading the way in addressing this with our range of recombinant monoclonal antibodies and knockout edited cell lines for gold-standard validation. Please check that this product meets your needs before purchasing.</p> <p>If you have any questions, special requirements or concerns, please send us an inquiry and/or contact our Support team ahead of purchase. Recommended alternatives for this product can be found below, along with publications, customer reviews and Q&As</p>

性能

形式	Liquid
存放说明	Shipped at 4°C. Store at +4°C short term (1-2 weeks). Upon delivery aliquot. Store at -20°C long term. Avoid freeze / thaw cycle.
存储溶液	pH: 7.4 Preservative: 0.1% Sodium azide Constituent: 99% PBS
纯度	Immunogen affinity purified
克隆	多克隆

同种型

lgG

应用

The Abpromise guarantee

Abpromise™承诺保证使用ab140761于以下的经测试应用

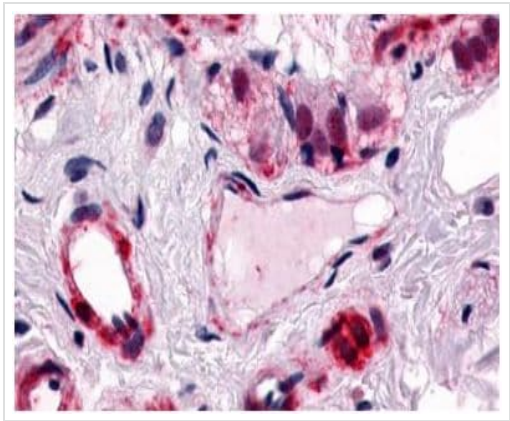
“应用说明”部分 下显示的仅为推荐的起始稀释度;实际最佳的稀释度/浓度应由使用者检定。

应用	Ab评论	说明
IHC-P	★★★★★ (3)	Use a concentration of 34 µg/ml. Perform heat mediated antigen retrieval before commencing with IHC staining protocol.

靶标

功能	Receptor for calcitonin-gene-related peptide (CGRP) together with RAMP1 and receptor for adrenomedullin together with RAMP3 (By similarity). Receptor for adrenomedullin together with RAMP2. The activity of this receptor is mediated by G proteins which activate adenylyl cyclase.
组织特异性	Predominantly expressed in the lung and heart.
序列相似性	Belongs to the G-protein coupled receptor 2 family.
细胞定位	Cell membrane.

图片



Immunohistochemical analysis of formalin-fixed, paraffin-embedded Human colon (submucosal plexus and submucosal vessel) tissue labelling CRLR with ab140761 at 34 µg/ml.

Immunohistochemistry (Formalin/PFA-fixed paraffin-embedded sections) - Anti-CRLR antibody - Cytoplasmic domain (ab140761)

Please note: All products are "FOR RESEARCH USE ONLY. NOT FOR USE IN DIAGNOSTIC PROCEDURES"

Our Abpromise to you: Quality guaranteed and expert technical support

- Replacement or refund for products not performing as stated on the datasheet

- Valid for 12 months from date of delivery
- Response to your inquiry within 24 hours
- We provide support in Chinese, English, French, German, Japanese and Spanish
- Extensive multi-media technical resources to help you
- We investigate all quality concerns to ensure our products perform to the highest standards

If the product does not perform as described on this datasheet, we will offer a refund or replacement. For full details of the Abpromise, please visit <https://www.abcam.cn/abpromise> or contact our technical team.

Terms and conditions

- Guarantee only valid for products bought direct from Abcam or one of our authorized distributors