

Anti-CrkL antibody [Y244] ab32018

敲除验证
重组
RabMAb

[4 References](#)
[7 图像](#)

概述

产品名称	Anti-CrkL抗体[Y244]
描述	兔单克隆抗体[Y244] to CrkL
宿主	Rabbit
特异性	<p>ab32018 recognises CrkL (Crk-like)protein.</p> <p>The mouse and rat recommendation is based on the WB results. We do not guarantee IHC-P for mouse and rat.</p>
经测试应用	适用于: WB, IHC-P, IP, Flow Cyt, ICC/IF
种属反应性	与反应: Mouse, Rat, Human
免疫原	Synthetic peptide within Human CrkL aa 250-350 (C terminal). The exact sequence is proprietary.
阳性对照	WB: Wild-type HeLa, CRKL knockout HeLa and K-562 cells. K-562 whole cell lysate. Mouse and rat thymus lysate. IHC-P: Human colon tissue; ICC/IF: K-562 cells; Flow Cyt: K-562 cells.
常规说明	<p>This product is a recombinant monoclonal antibody, which offers several advantages including:</p> <ul style="list-style-type: none"> - High batch-to-batch consistency and reproducibility - Improved sensitivity and specificity - Long-term security of supply - Animal-free production <p>For more information see here.</p> <p>Our RabMAb[®] technology is a patented hybridoma-based technology for making rabbit monoclonal antibodies. For details on our patents, please refer to RabMAb[®] patents.</p>

性能

形式	Liquid
存放说明	Shipped at 4°C. Upon delivery aliquot and store at -20°C. Avoid freeze / thaw cycles.
存储溶液	<p>pH: 7.20</p> <p>Preservative: 0.01% Sodium azide</p> <p>Constituents: 59% PBS, 40% Glycerol (glycerin, glycerine), 0.05% BSA</p>
纯度	Protein A purified
克隆	单克隆

克隆编号	Y244
同种型	IgG

应用

The Abpromise guarantee

Abpromise™承诺保证使用ab32018于以下的经测试应用

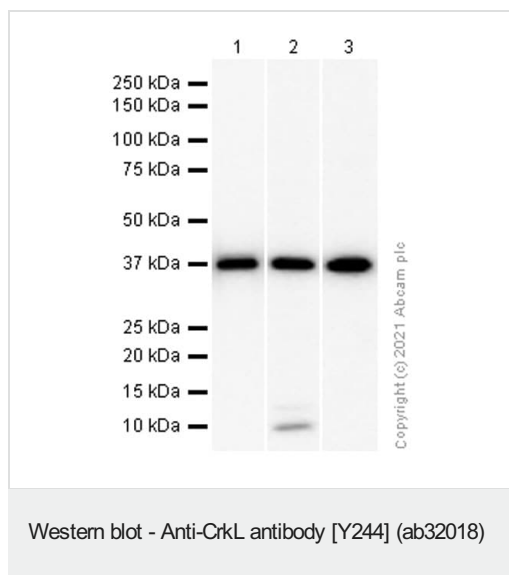
“应用说明”部分 下显示的仅为推荐的起始稀释度;实际最佳的稀释度/浓度应由使用者检定。

应用	Ab评论	说明
WB		1/1000. Detects a band of approximately 36 kDa (predicted molecular weight: 33 kDa).
IHC-P		1/100. Perform heat mediated antigen retrieval with citrate buffer pH 6 before commencing with IHC staining protocol. The mouse and rat recommendation is based on the WB results. We do not guarantee IHC-P for mouse and rat.
IP		1/50.
Flow Cyt		1/20.
ICC/IF		1/50.

靶标

功能	May mediate the transduction of intracellular signals.
序列相似性	Belongs to the CRK family. Contains 1 SH2 domain. Contains 2 SH3 domains.

图片



All lanes : Anti-CrkL antibody [Y244] (ab32018) at 1/1000 dilution (Purified)

Lane 1 : K-562 (Human chronic myelogenous leukemia lymphoblast) whole cell lysate

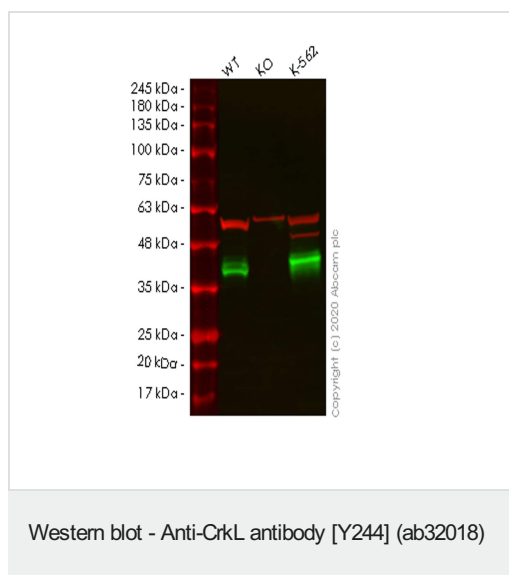
Lane 2 : Mouse thymus lysate

Lane 3 : Rat thymus lysate

Secondary

All lanes : Goat Anti-Rabbit IgG H&L (HRP) ([ab97051](#)) at 1/20000 dilution

Predicted band size: 33 kDa



All lanes : Anti-CrkL antibody [Y244] (ab32018) at 1/1000 dilution

Lane 1 : Wild-type HeLa cell lysate

Lane 2 : CRKL knockout HeLa cell lysate

Lane 3 : K-562 cell lysate

Lysates/proteins at 20 µg per lane.

Secondary

All lanes : Goat anti-Rabbit IgG H&L (IRDye® 800CW) preadsorbed ([ab216773](#)) at 1/10000 dilution

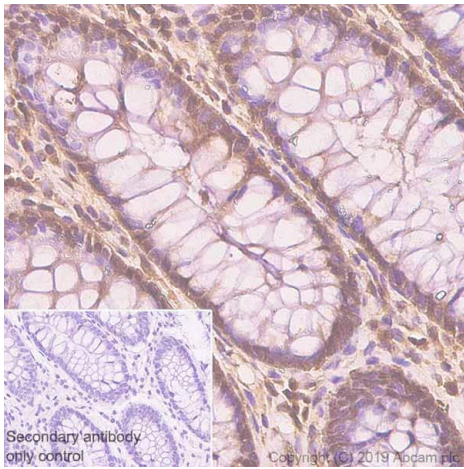
Predicted band size: 33 kDa

Observed band size: 37 kDa

Lanes 1-3: Merged signal (red and green). Green - ab32018 observed at 37 kDa. Red - loading control [ab7291](#) observed at 50 kDa.

ab32018 Anti-CrkL antibody [Y244] was shown to specifically react with CrkL in wild-type HeLa cells. Loss of signal was observed when knockout cell line [ab265993](#) (knockout cell lysate [ab257397](#)) was used. Wild-type and CrkL knockout samples were subjected to SDS-PAGE. ab32018 and Anti-alpha Tubulin antibody [DM1A] - Loading Control ([ab7291](#)) were incubated overnight at 4°C at 1 in 1000 dilution and 1 in 20000 dilution respectively. Blots were developed with Goat anti-Rabbit IgG H&L (IRDye® 800CW) preadsorbed ([ab216773](#)) and Goat anti-Mouse IgG H&L (IRDye®

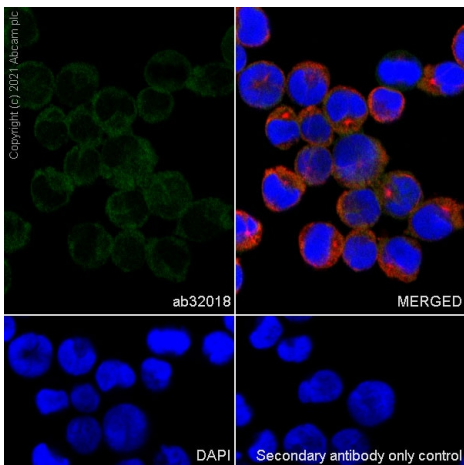
680RD) preadsorbed (**ab216776**) secondary antibodies at 1 in 20000 dilution for 1 hour at room temperature before imaging.



Immunohistochemistry (Formalin/PFA-fixed paraffin-embedded sections) - Anti-CrkL antibody [Y244] (ab32018)

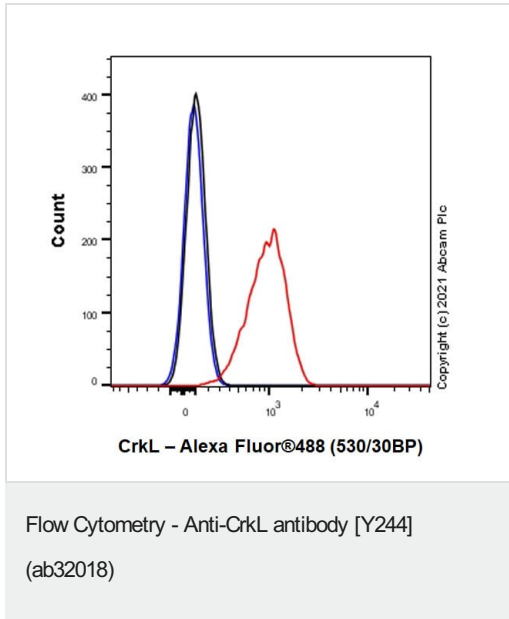
Immunohistochemistry (Formalin/PFA-fixed paraffin-embedded sections) analysis of human colon tissue sections labeling CrkL with purified ab32018 at 1/100 dilution (2.24 µg/mL). Heat mediated antigen retrieval was performed using Heat mediated antigen retrieval using Bond™ Epitope Retrieval Solution 2 (pH 9.0). Tissue was counterstained with Hematoxylin. Rabbit specific IHC polymer detection kit HRP/DAB (**ab209101**) secondary antibody was used at 1/0 dilution. PBS instead of the primary antibody was used as the negative control.

The immunostaining was performed on a Leica Biosystems BOND® RX instrument.

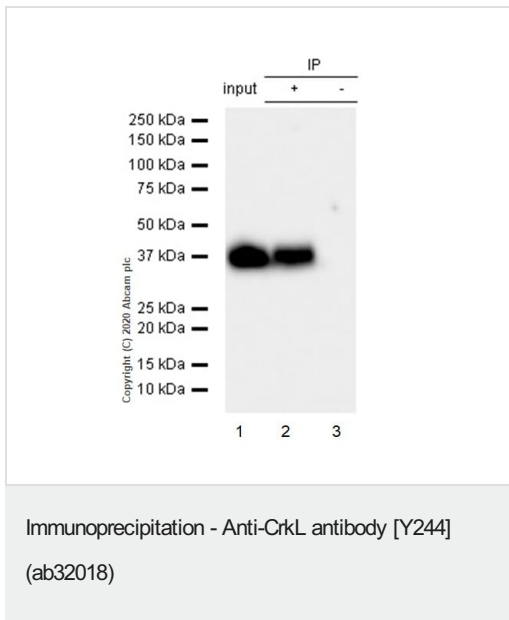


Immunocytochemistry/ Immunofluorescence - Anti-CrkL antibody [Y244] (ab32018)

Immunocytochemistry analysis of K-562 (Human chronic myelogenous leukemia lymphoblast) cells labeling CrkL with purified ab32018 at 1/50 dilution (4.5 µg/mL). Cells were fixed in 100% Methanol and permeabilized with 0.1% tritonX-100. Cells were counterstained with Ab195889 Anti-alpha Tubulin antibody [DM1A] - Microtubule Marker (Alexa Fluor® 594) 1/200 (2.5 µg/mL). Goat anti rabbit IgG (Alexa Fluor® 488, **ab150077**) was used as the secondary antibody at 1/1000 (2 µg/mL) dilution. DAPI (blue) was used as nuclear counterstain. PBS instead of the primary antibody was used as the secondary antibody only control.



Flow Cytometry analysis of K-562 (Human chronic myelogenous leukemia lymphoblast) cells labelling CrkL with purified ab32018 at 1/20 dilution (10 µg/mL) (Red). Cells were fixed with 4% Paraformaldehyde and permeabilised with 90% Methanol. A Goat anti rabbit IgG (Alexa Fluor® 488, [ab150077](#)) secondary antibody was used at 1/2000. Isotype control - Rabbit monoclonal IgG (Black). Unlabelled control - Cell without incubation with primary antibody and secondary antibody (Blue).



Purified ab32018 at 1/50 dilution (2µg) immunoprecipitating CrkL in K-562 whole cell lysate.

Lane 1 (input): K-562 (Human chronic myelogenous leukemia lymphoblast) whole cell lysate 10µg

Lane 2 (+): ab32018 + K-562 whole cell lysate.

Lane 3 (-): Rabbit monoclonal IgG ([ab172730](#)) instead of ab32018 in K-562 whole cell lysate.

VeriBlot for IP Detection Reagent (HRP) ([ab131366](#)) (1/1000 dilution) was used for Western blotting.

Blocking Buffer and concentration: 5% NFDm/TBST.

Diluting buffer and concentration: 5% NFDm/TBST.

Observed band size: 37 kDa

Why choose a recombinant antibody?



Research with confidence
Consistent and reproducible results



Long-term and scalable supply
Recombinant technology



Success from the first experiment
Confirmed specificity



Ethical standards compliant
Animal-free production

Anti-CrkL antibody [Y244] (ab32018)

Please note: All products are "FOR RESEARCH USE ONLY. NOT FOR USE IN DIAGNOSTIC PROCEDURES"

Our Abpromise to you: Quality guaranteed and expert technical support

- Replacement or refund for products not performing as stated on the datasheet
- Valid for 12 months from date of delivery
- Response to your inquiry within 24 hours
- We provide support in Chinese, English, French, German, Japanese and Spanish
- Extensive multi-media technical resources to help you
- We investigate all quality concerns to ensure our products perform to the highest standards

If the product does not perform as described on this datasheet, we will offer a refund or replacement. For full details of the Abpromise, please visit <https://www.abcam.cn/abpromise> or contact our technical team.

Terms and conditions

- Guarantee only valid for products bought direct from Abcam or one of our authorized distributors