

Anti-CREST antibody ab227535

2 References **5 图像**

概述

| | |
|-------|---|
| 产品名称 | Anti-CREST抗体 |
| 描述 | 兔多克隆抗体to CREST |
| 宿主 | Rabbit |
| 经测试应用 | 适用于: WB, IP, IHC-P, ICC/IF |
| 种属反应性 | 与反应: Mouse, Human |
| 免疫原 | Recombinant fragment within Human CREST (internal sequence). The exact sequence is proprietary. Database link: O75177 |
| 阳性对照 | WB: Mouse brain lysate; HeLa whole cell and nuclear lysates. IP: MCF7 whole cell extract. IHC-P: Huh-7 xenograft tissue. ICC/IF: A431 cells. |
| 常规说明 | <p>The Life Science industry has been in the grips of a reproducibility crisis for a number of years. Abcam is leading the way in addressing this with our range of recombinant monoclonal antibodies and knockout edited cell lines for gold-standard validation. Please check that this product meets your needs before purchasing.</p> <p>If you have any questions, special requirements or concerns, please send us an inquiry and/or contact our Support team ahead of purchase. Recommended alternatives for this product can be found below, along with publications, customer reviews and Q&As</p> |

性能

| | |
|------|--|
| 形式 | Liquid |
| 存放说明 | Shipped at 4°C. Store at +4°C short term (1-2 weeks). Upon delivery aliquot. Store at -20°C long term. Avoid freeze / thaw cycle. |
| 存储溶液 | <p>pH: 7.00</p> <p>Preservative: 0.01% Thimerosal (merthiolate)</p> <p>Constituents: 1.21% Tris, 0.75% Glycine, 20% Glycerol (glycerin, glycerine)</p> |
| 纯度 | Immunogen affinity purified |
| 克隆 | 多克隆 |
| 同种型 | IgG |

应用

The Abpromise guarantee

Abpromise™ 承诺保证使用ab227535于以下的经测试应用

“应用说明”部分 下显示的仅为推荐的起始稀释度;实际最佳的稀释度/浓度应由使用者检定。

| 应用 | Ab评论 | 说明 |
|--------|------|---|
| WB | | 1/500 - 1/3000. Predicted molecular weight: 43 kDa. |
| IP | | 1/100 - 1/500. |
| IHC-P | | 1/100 - 1/1000. |
| ICC/IF | | 1/100 - 1/1000. |

靶标

功能

Transcriptional activator which is required for calcium-dependent dendritic growth and branching in cortical neurons. Recruits CREB-binding protein (CREBBP) to nuclear bodies. Component of the CREST-BRG1 complex, a multiprotein complex that regulates promoter activation by orchestrating a calcium-dependent release of a repressor complex and a recruitment of an activator complex. In resting neurons, transcription of the c-FOS promoter is inhibited by BRG1-dependent recruitment of a phospho-RB1-HDAC1 repressor complex. Upon calcium influx, RB1 is dephosphorylated by calcineurin, which leads to release of the repressor complex. At the same time, there is increased recruitment of CREBBP to the promoter by a CREST-dependent mechanism, which leads to transcriptional activation. The CREST-BRG1 complex also binds to the NR2B promoter, and activity-dependent induction of NR2B expression involves a release of HDAC1 and recruitment of CREBBP.

组织特异性

Ubiquitous; with lowest levels in spleen.

序列相似性

Belongs to the SS18 family.

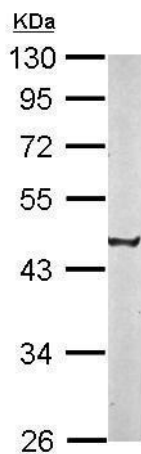
结构域

The MFD (multi-functional domain) domain is involved in transcription transactivation, nuclear body targeting and dimerization.

细胞定位

Nucleus. Chromosome > centromere > kinetochore. Localizes to nuclear bodies. Co-localizes with SGOL1 at kinetochore.

图片

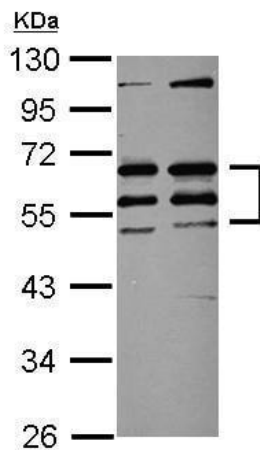


Western blot - Anti-CREST antibody (ab227535)

Anti-CREST antibody (ab227535) at 1/1000 dilution + Mouse brain lysate at 50 µg

Predicted band size: 43 kDa

10% SDS-PAGE gel.



Western blot - Anti-CREST antibody (ab227535)

All lanes : Anti-CREST antibody (ab227535) at 1/1000 dilution

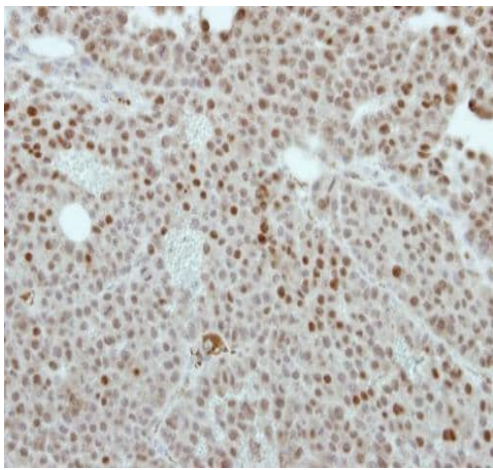
Lane 1 : HeLa (human epithelial cell line from cervix adenocarcinoma) whole cell lysate

Lane 2 : HeLa nuclear lysate

Lysates/proteins at 20 µg per lane.

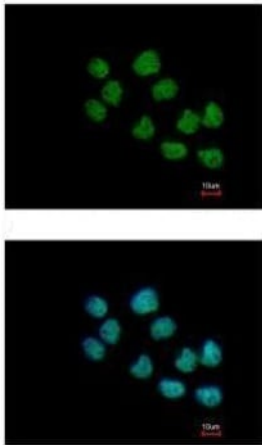
Predicted band size: 43 kDa

10% SDS-PAGE gel.



Paraffin-embedded Huh-7 xenograft tissue stained for CREST with ab227535 at 1/500 dilution in immunohistochemical analysis.

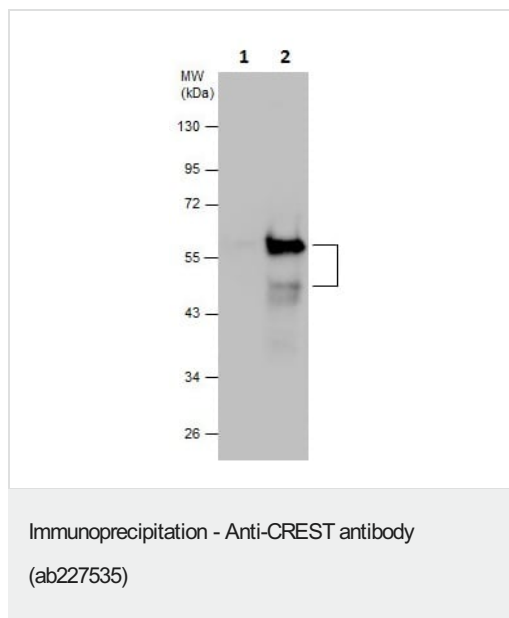
Immunohistochemistry (Formalin/PFA-fixed paraffin-embedded sections) - Anti-CREST antibody (ab227535)



Paraformaldehyde-fixed A431 (human epidermoid carcinoma cell line) cells stained for CREST (green) using ab227535 at 1/500 dilution in ICC/IF.

Blue: Hoechst 33342 staining.

Immunocytochemistry/ Immunofluorescence - Anti-CREST antibody (ab227535)



CREST was immunoprecipitated from MCF7 (human breast adenocarcinoma cell line) whole cell extract with 5 µg ab227535. Western blot was performed from the immunoprecipitate using ab227535.

Lane 1: Control IgG IP in MCF7 whole cell extract.

Lane 2: ab227535 IP in MCF7 whole cell extract.

Please note: All products are "FOR RESEARCH USE ONLY. NOT FOR USE IN DIAGNOSTIC PROCEDURES"

Our Abpromise to you: Quality guaranteed and expert technical support

- Replacement or refund for products not performing as stated on the datasheet
- Valid for 12 months from date of delivery
- Response to your inquiry within 24 hours
- We provide support in Chinese, English, French, German, Japanese and Spanish
- Extensive multi-media technical resources to help you
- We investigate all quality concerns to ensure our products perform to the highest standards

If the product does not perform as described on this datasheet, we will offer a refund or replacement. For full details of the Abpromise, please visit <https://www.abcam.cn/abpromise> or contact our technical team.

Terms and conditions

- Guarantee only valid for products bought direct from Abcam or one of our authorized distributors