

### Anti-Creatine kinase B type antibody [EPR3927] ab92452

敲除验证
重组
RabMAb

[6 References](#)
[11 图像](#)

#### 概述

产品名称	Anti-Creatine kinase B type抗体[EPR3927]
描述	兔单克隆抗体[EPR3927] to Creatine kinase B type
宿主	Rabbit
特异性	The mouse and rat recommendation is based on the WB results. We do not guarantee IHC-P for mouse and rat.
经测试应用	适用于: WB, IHC-P, ICC/IF, Flow Cyt (Intra)
种属反应性	与反应: Mouse, Rat, Human
免疫原	Synthetic peptide within Human Creatine kinase B type aa 350-450 (C terminal). The exact sequence is proprietary.
阳性对照	WB: HeLa, HAP1, SHSY-5Y, Y-79, SW840, mouse cerebellum, mouse brain, C6 and rat brain whole cell lysates IHC-P: Human astrocytoma and glioma Tissue ICC/IF: HeLa cells Flow Cyt (intra): HeLa cells
常规说明	<p>This product is a recombinant monoclonal antibody, which offers several advantages including:</p> <ul style="list-style-type: none"> <li>- High batch-to-batch consistency and reproducibility</li> <li>- Improved sensitivity and specificity</li> <li>- Long-term security of supply</li> <li>- Animal-free production</li> </ul> <p>For more information <a href="#">see here</a>.</p> <p>Our RabMAb<sup>®</sup> technology is a patented hybridoma-based technology for making rabbit monoclonal antibodies. For details on our patents, please refer to <a href="#">RabMAb<sup>®</sup> patents</a>.</p>

#### 性能

形式	Liquid
存放说明	Shipped at 4°C. Store at +4°C short term (1-2 weeks). Upon delivery aliquot. Store at -20°C long term. Avoid freeze / thaw cycle.
存储溶液	<p>pH: 7.20</p> <p>Preservative: 0.01% Sodium azide</p> <p>Constituents: 59% PBS, 40% Glycerol (glycerin, glycerine), 0.05% BSA</p>
纯度	Protein A purified

克隆	单克隆
克隆编号	EPR3927
同种型	IgG

## 应用

**The Abpromise guarantee**      **Abpromise™**承诺保证使用ab92452于以下的经测试应用

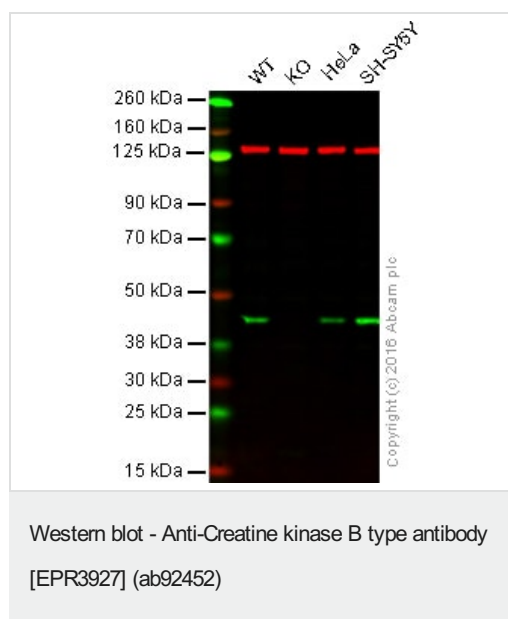
“应用说明”部分 下显示的仅为推荐的起始稀释度;实际最佳的稀释度/浓度应由使用者检定。

应用	Ab评论	说明
<b>WB</b>		1/10000 - 1/50000. Predicted molecular weight: 43 kDa.
<b>IHC-P</b>		1/100 - 1/1000. See <b>IHC antigen retrieval protocols</b> . Use of an HRP/AP polymerized secondary antibody is recommended for enhanced staining. The mouse and rat recommendation is based on the WB results. We do not guarantee IHC-P for mouse and rat.
<b>ICC/IF</b>		1/50 - 1/500.
<b>Flow Cyt (Intra)</b>		1/10 - 1/100. <b>ab172730</b> - Rabbit monoclonal IgG, is suitable for use as an isotype control with this antibody.

## 靶标

<b>功能</b>	Reversibly catalyzes the transfer of phosphate between ATP and various phosphogens (e.g. creatine phosphate). Creatine kinase isoenzymes play a central role in energy transduction in tissues with large, fluctuating energy demands, such as skeletal muscle, heart, brain and spermatozoa.
<b>序列相似性</b>	Belongs to the ATP:guanido phosphotransferase family. Contains 1 phosphagen kinase C-terminal domain. Contains 1 phosphagen kinase N-terminal domain.
<b>细胞定位</b>	Cytoplasm.

## 图片



**Lane 1:** Wild-type HAP1 cell lysate (20 µg)

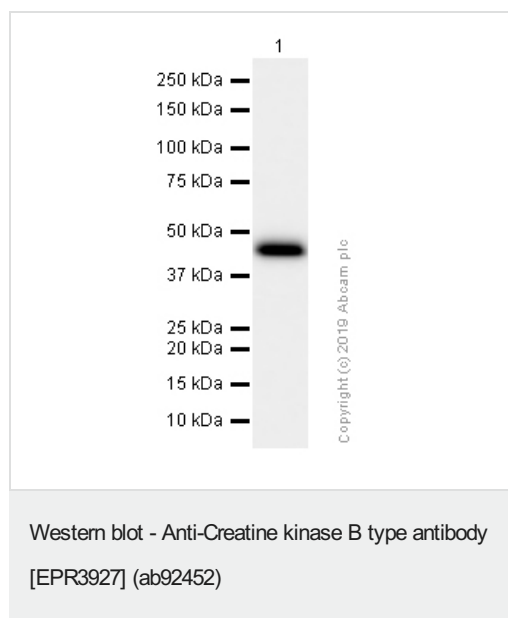
**Lane 2:** Creatine kinase B knockout HAP1 cell lysate (20 µg)

**Lane 3:** HeLa cell lysate (20 µg)

**Lane 4:** SH-SY5Y cell lysate (20 µg)

**Lanes 1 - 4:** Merged signal (red and green). Green - ab92452 observed at 45 kDa. Red - loading control, [ab18058](#), observed at 2X kDa.

ab92452 (unpurified) was shown to specifically react with Creatine kinase B when ProteinX knockout samples were used. Wild-type and Creatine kinase B knockout samples were subjected to SDS-PAGE. ab92452 and [ab18058](#) (loading control to vinculin) were both diluted 1/10 000 and incubated overnight at 4°C. Blots were developed with Goat anti-Rabbit IgG H&L (IRDye® 800CW) preadsorbed ([ab216773](#)) and Goat anti-Mouse IgG H&L (IRDye® 680RD) preadsorbed ([ab216776](#)) secondary antibodies at 1/10000 dilution for 1 hour at room temperature before imaging.



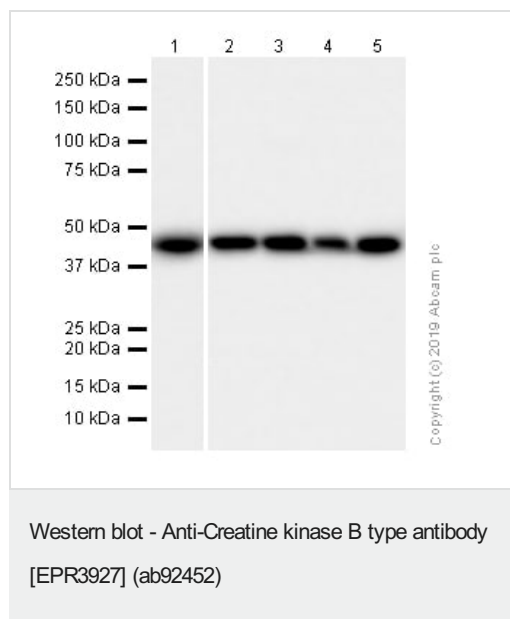
Anti-Creatine kinase B type antibody [EPR3927] (ab92452) at 1/10000 dilution (Purified) + Y79 (Human retinoblastoma retinoblastoma) whole cell lysates at 15 µg

### Secondary

Goat Anti-Rabbit IgG H&L (HRP) ([ab97051](#)) at 1/20000 dilution

**Predicted band size:** 43 kDa

**Observed band size:** 43 kDa



**Lanes 1-4 :** Anti-Creatine kinase B type antibody [EPR3927]

(ab92452) at 1/10000 dilution (Purified)

**Lane 5 :** Anti-Creatine kinase B type antibody [EPR3927]

(ab92452) at 1/10000 dilution

**Lane 1 :** HeLa (Human cervix adenocarcinoma epithelial cell)

whole cell lysates

**Lane 2 :** Mouse cerebellum lysates

**Lane 3 :** Mouse brain lysates

**Lane 4 :** C6 (Rat glial tumor glial cell) whole cell lysates

**Lane 5 :** Rat brain lysates

Lysates/proteins at 20 µg per lane.

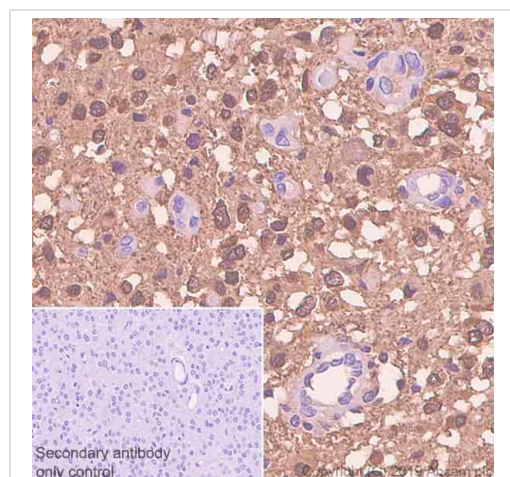
### Secondary

**All lanes :** Goat Anti-Rabbit IgG H&L (HRP) ([ab97051](#)) at 1/20000

dilution

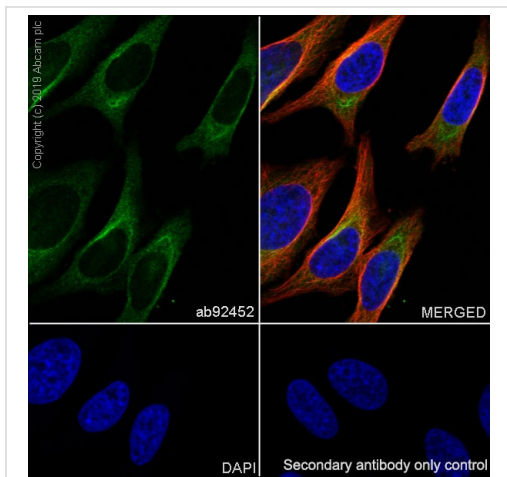
**Predicted band size:** 43 kDa

**Observed band size:** 43 kDa



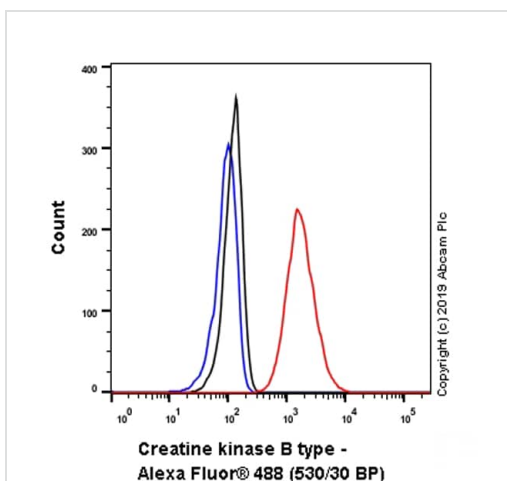
Immunohistochemistry (Formalin/PFA-fixed paraffin-embedded sections) - Anti-Creatine kinase B type antibody [EPR3927] (ab92452)

Immunohistochemistry (Formalin/PFA-fixed paraffin-embedded sections) analysis of human astrocytoma tissue sections labeling Creatine kinase B type with purified ab92452 at 1/1000 dilution (0.101 µg/ml). Heat mediated antigen retrieval was performed using Bond™ Epitope Retrieval Solution 2 (pH 9.0). Rabbit specific IHC polymer detection kit HRP/DAB ([ab209101](#)) was used as the secondary antibody. Negative control: PBS instead of the primary antibody. Hematoxylin was used as a counterstain.



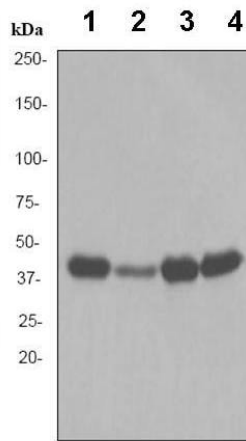
Immunocytochemistry/ Immunofluorescence - Anti-Creatine kinase B type antibody [EPR3927] (ab92452)

Immunocytochemistry/ Immunofluorescence analysis of HeLa (Human cervix adenocarcinoma epithelial cell) cells labeling Creatine kinase B type with purified ab92452 at 1:50 dilution (2.0 µg/ml). Cells were fixed in 4% Paraformaldehyde and permeabilized with 0.1% tritonX-100. Cells were counterstained with Ab195889 Anti-alpha Tubulin antibody [DM1A] - Microtubule Marker (Alexa Fluor® 594) 1:200 (2.5 µg/ml). Goat anti rabbit IgG (Alexa Fluor® 488, **ab150077**) was used as the secondary antibody at 1:1000 (2 µg/ml) dilution. DAPI (blue) was used as nuclear counterstain. PBS instead of the primary antibody was used as the secondary antibody only control.



Flow Cytometry (Intracellular) - Anti-Creatine kinase B type antibody [EPR3927] (ab92452)

Intracellular Flow Cytometry analysis of HeLa (Human cervix adenocarcinoma epithelial cell) cells labeling Creatine kinase B type with purified ab92452 at 1/20 dilution (5 µg/ml) (Red). Cells were fixed with 4% Paraformaldehyde and permeabilised with 90% Methanol. A Goat anti rabbit IgG (Alexa Fluor® 488, **ab150077**) secondary antibody was used at 1/2000. Isotype control - Rabbit monoclonal IgG (Black). Unlabeled control - Cell without incubation with primary antibody and secondary antibody (Blue).



Western blot - Anti-Creatine kinase B type antibody [EPR3927] (ab92452)

**All lanes :** Anti-Creatine kinase B type antibody [EPR3927] (ab92452) at 1/10000 dilution (unpurified)

**Lane 1 :** SHSY-5Y cell lysate

**Lane 2 :** HeLa cell lysate

**Lane 3 :** Y-79 cell lysate

**Lane 4 :** SW840 cell lysate

Lysates/proteins at 10 µg per lane.

### Secondary

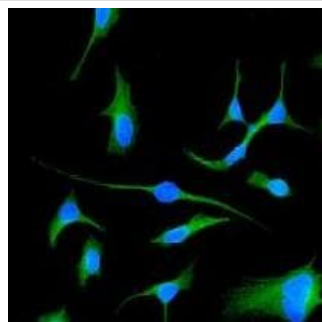
**All lanes :** HRP labelled goat anti-rabbit at 1/2000 dilution

**Predicted band size:** 43 kDa



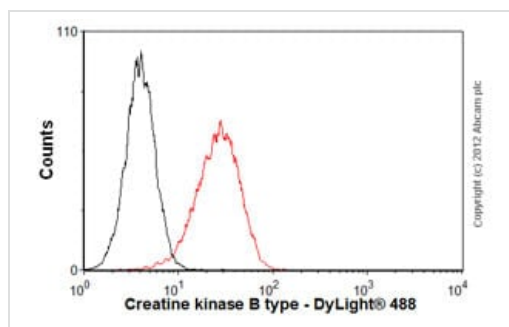
Immunohistochemistry (Formalin/PFA-fixed paraffin-embedded sections) - Anti-Creatine kinase B type antibody [EPR3927] (ab92452)

Paraffin embedded Human glioma tissue labelled with ab92452 (unpurified) at 1/100 dilution.



Immunocytochemistry/ Immunofluorescence - Anti-Creatine kinase B type antibody [EPR3927] (ab92452)

Immunofluorescence analysis of HeLa cells labelled with ab92452 (unpurified) at 1/100 dilution.



Flow Cytometry (Intracellular) - Anti-Creatine kinase B type antibody [EPR3927] (ab92452)

Overlay histogram showing HeLa cells stained with ab92452 (unpurified) (red line). The cells were fixed with 4% paraformaldehyde (10 min) and then permeabilized with 0.1% PBS-Tween for 20 min. The cells were then incubated in 1x PBS / 10% normal goat serum / 0.3M glycine to block non-specific protein-protein interactions followed by the antibody (ab92452, 1/100 dilution) for 30 min at 22°C. The secondary antibody used was DyLight® 488 goat anti-rabbit IgG (H+L) ([ab96899](#)) at 1/500 dilution for 30 min at 22°C. Isotype control antibody (black line) was rabbit IgG (monoclonal) (1µg/1x10<sup>6</sup> cells) used under the same conditions. Acquisition of >5,000 events was performed.

#### Why choose a recombinant antibody?



**Research with confidence**  
Consistent and reproducible results



**Long-term and scalable supply**  
Recombinant technology



**Success from the first experiment**  
Confirmed specificity



**Ethical standards compliant**  
Animal-free production

Anti-Creatine kinase B type antibody [EPR3927] (ab92452)

**Please note:** All products are "FOR RESEARCH USE ONLY. NOT FOR USE IN DIAGNOSTIC PROCEDURES"

#### Our Abpromise to you: Quality guaranteed and expert technical support

- Replacement or refund for products not performing as stated on the datasheet
- Valid for 12 months from date of delivery
- Response to your inquiry within 24 hours
- We provide support in Chinese, English, French, German, Japanese and Spanish
- Extensive multi-media technical resources to help you
- We investigate all quality concerns to ensure our products perform to the highest standards

If the product does not perform as described on this datasheet, we will offer a refund or replacement. For full details of the Abpromise, please visit <https://www.abcam.cn/abpromise> or contact our technical team.

#### **Terms and conditions**

---

- Guarantee only valid for products bought direct from Abcam or one of our authorized distributors