

Anti-Creatine kinase B type antibody ab151579

★★★★★ [1 Abreviews](#) [2 References](#) [5 图像](#)

概述

产品名称	Anti-Creatine kinase B type抗体
描述	兔多克隆抗体to Creatine kinase B type
宿主	Rabbit
经测试应用	适用于: WB, IHC-P, ICC/IF
种属反应性	与反应: Mouse, Human 预测可用于: Rat, Chicken, Cow, Pig, Xenopus tropicalis 
免疫原	Recombinant fragment, corresponding to a region within amino acids 16-209 of Human Creatine kinase B type
阳性对照	NIH-3T3 and H1299 cell lysates; 293T, HeLaS3, HepG2 cell lines; HeLa cells.
常规说明	<p>The Life Science industry has been in the grips of a reproducibility crisis for a number of years. Abcam is leading the way in addressing this with our range of recombinant monoclonal antibodies and knockout edited cell lines for gold-standard validation. Please check that this product meets your needs before purchasing.</p> <p>If you have any questions, special requirements or concerns, please send us an inquiry and/or contact our Support team ahead of purchase. Recommended alternatives for this product can be found below, along with publications, customer reviews and Q&As</p>

性能

形式	Liquid
存放说明	Shipped at 4°C. Upon delivery aliquot. Store at -20°C or -80°C. Avoid freeze / thaw cycle.
存储溶液	<p>pH: 7.00</p> <p>Preservative: 0.01% Thimerosal (merthiolate)</p> <p>Constituents: 79.99% PBS, 20% Glycerol (glycerin, glycerine)</p>
纯度	Protein A purified
克隆	多克隆
同种型	IgG

应用

The Abpromise guarantee **Abpromise™**承诺保证使用ab151579于以下的经测试应用

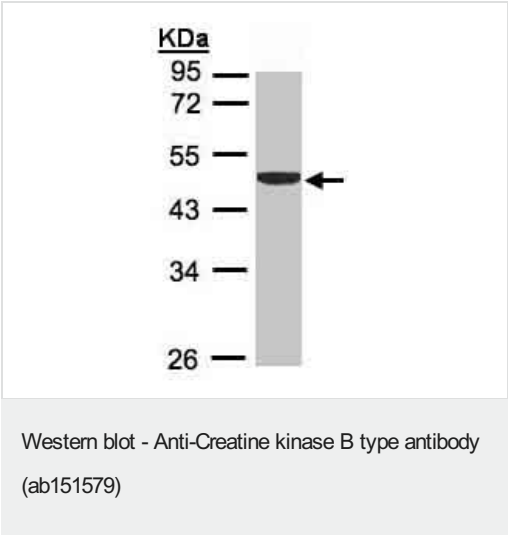
“应用说明”部分 下显示的仅为推荐的起始稀释度;实际最佳的稀释度/浓度应由使用者检定。

应用	Ab评论	说明
WB	★★★★★ (1)	1/500 - 1/3000. Predicted molecular weight: 43 kDa.
IHC-P		1/100 - 1/1000. Perform heat mediated antigen retrieval with citrate buffer pH 6 before commencing with IHC staining protocol.
ICC/IF		1/100 - 1/1000.

靶标

功能	Reversibly catalyzes the transfer of phosphate between ATP and various phosphagens (e.g. creatine phosphate). Creatine kinase isoenzymes play a central role in energy transduction in tissues with large, fluctuating energy demands, such as skeletal muscle, heart, brain and spermatozoa.
序列相似性	Belongs to the ATP:guanido phosphotransferase family. Contains 1 phosphagen kinase C-terminal domain. Contains 1 phosphagen kinase N-terminal domain.
细胞定位	Cytoplasm.

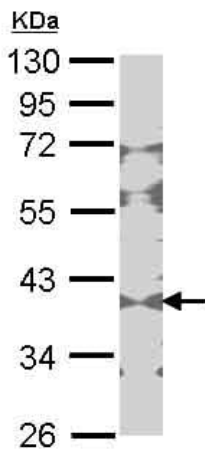
图片



Anti-Creatine kinase B type antibody (ab151579) at 1/1000 dilution
+ H1299 cell lysate at 30 µg

Predicted band size: 43 kDa

10% SDS PAGE

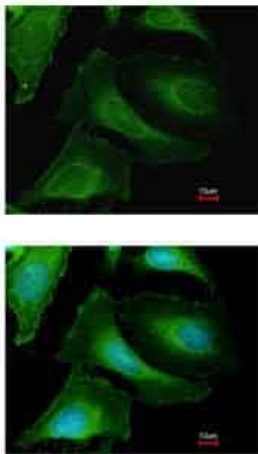


Western blot - Anti-Creatine kinase B type antibody (ab151579)

Anti-Creatine kinase B type antibody (ab151579) at 1/1000 dilution
+ NIH-3T3 cell lysate at 30 µg

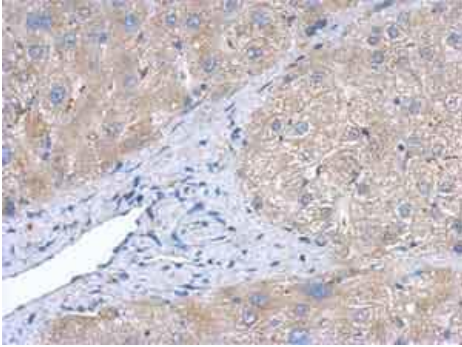
Predicted band size: 43 kDa

10% SDS PAGE



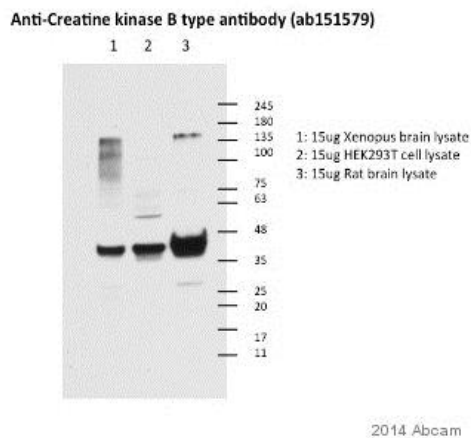
Immunocytochemistry/ Immunofluorescence - Anti-Creatine kinase B type antibody (ab151579)

Immunofluorescence analysis of methanol-fixed HeLa cells, labeling Creatine kinase B with ab151579 at 1/200 dilution.



Immunohistochemistry (Formalin/PFA-fixed paraffin-embedded sections) - Anti-Creatine kinase B type antibody (ab151579)

Immunohistochemical analysis of paraffin-embedded human hepatoma tissue, labeling Creatine kinase B with ab151579 at 1/500 dilution.



Western blot - Anti-Creatine kinase B type antibody (ab151579)

This image is courtesy of an anonymous Abreview

All lanes : Anti-Creatine kinase B type antibody (ab151579) at 1/1000 dilution

Lane 1 : Xenopus laevis brain tissue lysate - whole

Lane 2 : HEK293 cell lysate

Lane 3 : Rat brain tissue lysate - whole

Lysates/proteins at 15 µg per lane.

Secondary

All lanes : HRP-conjugated goat anti-rabbit IgG (H+L) polyclonal at 1/1000 dilution

Developed using the ECL technique.

Performed under reducing conditions.

Predicted band size: 43 kDa

Observed band size: 43 kDa

Additional bands at: 75-135 kDa (possible non-specific binding)

Exposure time: 30 seconds

Please note: All products are "FOR RESEARCH USE ONLY. NOT FOR USE IN DIAGNOSTIC PROCEDURES"

Our Abpromise to you: Quality guaranteed and expert technical support

- Replacement or refund for products not performing as stated on the datasheet
- Valid for 12 months from date of delivery
- Response to your inquiry within 24 hours

- We provide support in Chinese, English, French, German, Japanese and Spanish
- Extensive multi-media technical resources to help you
- We investigate all quality concerns to ensure our products perform to the highest standards

If the product does not perform as described on this datasheet, we will offer a refund or replacement. For full details of the Abpromise, please visit <https://www.abcam.cn/abpromise> or contact our technical team.

Terms and conditions

- Guarantee only valid for products bought direct from Abcam or one of our authorized distributors