


Anti-CPEB3 antibody ab10883

★★★★★ [3 Abreviews](#) [16 References](#) [2 图像](#)

概述

产品名称	Anti-CPEB3抗体
描述	兔多克隆抗体to CPEB3
宿主	Rabbit
特异性	From Jan 2024, QC testing of replenishment batches of this polyclonal changed. All tested and expected application and reactive species combinations are still covered by our Abcam product promise. However, we no longer test all applications. For more information on a specific batch, please contact our Scientific Support who will be happy to help.
经测试应用	适用于: WB, ICC/IF
种属反应性	与反应: Mouse, Human 预测可用于: Rat 
免疫原	Synthetic peptide. This information is proprietary to Abcam and/or its suppliers.
阳性对照	ICC/IF: SKNSH cells
常规说明	<p>The Life Science industry has been in the grips of a reproducibility crisis for a number of years. Abcam is leading the way in addressing this with our range of recombinant monoclonal antibodies and knockout edited cell lines for gold-standard validation. Please check that this product meets your needs before purchasing.</p> <p>If you have any questions, special requirements or concerns, please send us an inquiry and/or contact our Support team ahead of purchase. Recommended alternatives for this product can be found below, along with publications, customer reviews and Q&As</p>

性能

形式	Liquid
存放说明	Shipped at 4°C. Store at +4°C short term (1-2 weeks). Upon delivery aliquot. Store at -20°C or -80°C. Avoid freeze / thaw cycle.
存储溶液	<p>pH: 7.40</p> <p>Preservative: 0.02% Sodium azide</p> <p>Constituent: PBS</p> <p>Batches of this product that have a concentration < 1mg/ml may have BSA added as a stabilising agent. If you would like information about the formulation of a specific lot, please contact our</p>

scientific support team who will be happy to help.

纯度

Immunogen affinity purified

克隆

多克隆

同种型

IgG

应用

The Abpromise guarantee

Abpromise™ 承诺保证使用ab10883于以下的经测试应用

“应用说明”部分 下显示的仅为推荐的起始稀释度;实际最佳的稀释度/浓度应由使用者检定。

应用	Ab评论	说明
WB		1/500 - 1/1000. Detects a band of approximately 75 kDa (predicted molecular weight: 75 kDa).
ICC/IF		Use a concentration of 5 µg/ml.

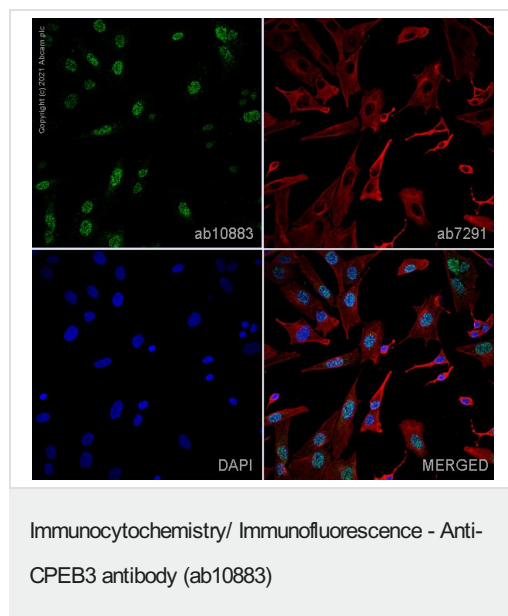
靶标

序列相似性

Belongs to the RRM CPEB family.

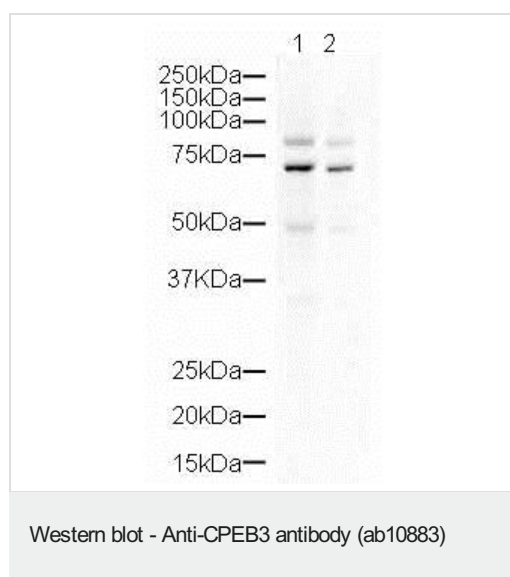
Contains 2 RRM (RNA recognition motif) domains.

图片



ab10883 staining CPEB3 in SKNSH cells. The cells were fixed with 4% paraformaldehyde (10 min), permeabilized with 0.1% PBS-Triton X-100 for 5 minutes and then blocked with 1% BSA/10% normal goat serum/0.3M glycine in 0.1%PBS-Tween for 1h. The cells were then incubated overnight at 4°C with ab10883 at 1µg/ml and **ab7291**, Mouse monoclonal [DM1A] to alpha Tubulin - Loading Control. Cells were then incubated with **ab150081**, Goat polyclonal Secondary Antibody to Rabbit IgG - H&L (Alexa Fluor® 488), pre-adsorbed at 1/1000 dilution (shown in green) and **ab150120**, Goat polyclonal Secondary Antibody to Mouse IgG - H&L (Alexa Fluor® 594), pre-adsorbed at 1/1000 dilution (shown in pseudocolour red). Nuclear DNA was labelled with DAPI (shown in blue).

Image was acquired with a high-content analyser (Operetta CLS, Perkin Elmer) and a maximum intensity projection of confocal sections is shown.



Lane 1 : Anti-CPEB3 antibody (ab10883) at 1/500 dilution

Lane 2 : Anti-CPEB3 antibody (ab10883) at 1/1000 dilution

All lanes : Mouse Brain lysate

Lysates/proteins at 5 µg per lane.

Secondary

All lanes : Goat Anti-Rabbit IgG H&L (HRP) preadsorbed ([ab7090](#)) at 1/5000 dilution

Predicted band size: 75 kDa

Exposure time: 3 minutes

Lanes 1 to 2

Lane 1: 5µg per lane Mouse Brain 1/500

Lane 2: 5µg per lane Mouse Brain 1/1000

Exposure time: 3 minutes

Expected molecular weight: 78kDa

Secondary ab: Goat polyclonal to Rabbit IgG H&L (HRP) Pre-Adsorbed

[ab7090](#) (1/5000)

We think that the top band here is the correct band, as it is the same size as the most intense band on the previous blot. The banding pattern is the same on both blots and the lower bands may be cleavage products as there is no evidence of CPEB3 isoforms in the literature.

We think that the top band here is the correct band, as it is the same size as the most intense band on the previous blot. The banding pattern is the same on both blots and the lower bands may be cleavage products as there is no evidence of CPEB3 isoforms in the literature.

Please note: All products are "FOR RESEARCH USE ONLY. NOT FOR USE IN DIAGNOSTIC PROCEDURES"

Our Abpromise to you: Quality guaranteed and expert technical support

- Replacement or refund for products not performing as stated on the datasheet
- Valid for 12 months from date of delivery
- Response to your inquiry within 24 hours

- We provide support in Chinese, English, French, German, Japanese and Spanish
- Extensive multi-media technical resources to help you
- We investigate all quality concerns to ensure our products perform to the highest standards

If the product does not perform as described on this datasheet, we will offer a refund or replacement. For full details of the Abpromise, please visit <https://www.abcam.cn/abpromise> or contact our technical team.

Terms and conditions

- Guarantee only valid for products bought direct from Abcam or one of our authorized distributors