

Anti-Cortactin (phospho Y421) antibody ab47768

★★★★★ [2 Abreviews](#) [7 References](#) [1 图像](#)

概述

产品名称	Anti-Cortactin (phospho Y421)抗体
描述	兔多克隆抗体to Cortactin (phospho Y421)
宿主	Rabbit
经测试应用	适用于: ELISA, WB
种属反应性	与反应: Human 预测可用于: Mouse, Rat 
免疫原	Synthetic peptide corresponding to Human Cortactin aa 350-450 (phospho Y421). Database link: Q14247
阳性对照	Hela cell extract.
常规说明	<p>The Life Science industry has been in the grips of a reproducibility crisis for a number of years. Abcam is leading the way in addressing this with our range of recombinant monoclonal antibodies and knockout edited cell lines for gold-standard validation. Please check that this product meets your needs before purchasing.</p> <p>If you have any questions, special requirements or concerns, please send us an inquiry and/or contact our Support team ahead of purchase. Recommended alternatives for this product can be found below, along with publications, customer reviews and Q&As</p>

性能

形式	Liquid
存放说明	Shipped at 4°C. Store at -20°C. Stable for 12 months at -20°C.
存储溶液	pH: 7.40 Preservative: 0.02% Sodium azide Constituents: PBS, 50% Glycerol (glycerin, glycerine), 0.87% Sodium chloride
纯度	Without Mg+2 and Ca+2
纯化说明	Immunogen affinity purified
克隆	多克隆

同种型IgG

应用

The Abpromise guarantee **Abpromise™**承诺保证使用ab47768于以下的经测试应用

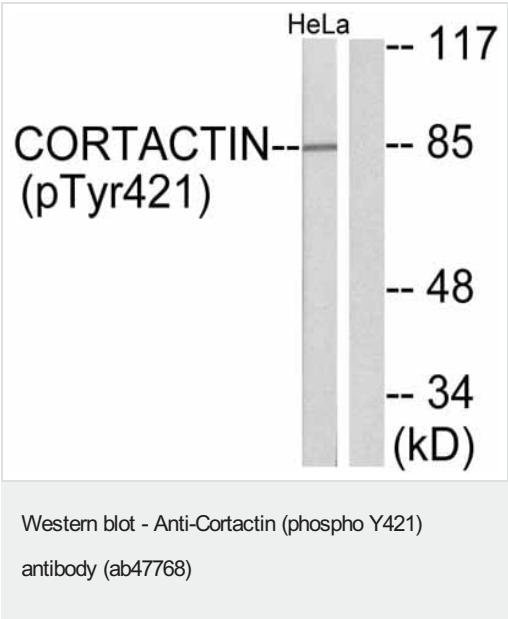
“应用说明”部分 下显示的仅为推荐的起始稀释度;实际最佳的稀释度/浓度应由使用者检定。

应用	Ab评论	说明
ELISA		Use at an assay dependent concentration.
WB	★★★★★ (1)	1/500 - 1/1000. Detects a band of approximately 85 kDa (predicted molecular weight: 62 kDa).

靶标

功能	Contributes to the organization of the actin cytoskeleton and cell structure. Plays a role in the regulation of cell migration. Plays a role in the invasiveness of cancer cells, and the formation of metastases.
序列相似性	Contains 7 cortactin repeats. Contains 1 SH3 domain.
结构域	The SH3 motif may mediate binding to the cytoskeleton.
翻译后修饰	Tyrosine phosphorylation in transformed cells may contribute to cellular growth regulation and transformation.
细胞定位	Cytoplasm > cytoskeleton. Cell projection > lamellipodium. Cell projection > ruffle. Associated with membrane ruffles and lamellipodia.

图片



All lanes : Anti-Cortactin (phospho Y421) antibody (ab47768) at 1/500 dilution

Lane 1 : Hela cell extract, treated with H₂O₂

Lane 2 : Hela cell extract, untreated

Predicted band size: 62 kDa

Typically 5-30ug of total protein was loaded per lane of the gel. The cells were treated with 150 uM H₂O₂.

Please note: All products are "FOR RESEARCH USE ONLY. NOT FOR USE IN DIAGNOSTIC PROCEDURES"

Our Abpromise to you: Quality guaranteed and expert technical support

- Replacement or refund for products not performing as stated on the datasheet
- Valid for 12 months from date of delivery
- Response to your inquiry within 24 hours

- We provide support in Chinese, English, French, German, Japanese and Spanish
- Extensive multi-media technical resources to help you
- We investigate all quality concerns to ensure our products perform to the highest standards

If the product does not perform as described on this datasheet, we will offer a refund or replacement. For full details of the Abpromise, please visit <https://www.abcam.cn/abpromise> or contact our technical team.

Terms and conditions

- Guarantee only valid for products bought direct from Abcam or one of our authorized distributors