




Anti-CLEC12B antibody ab211452

3 图像

概述

产品名称	Anti-CLEC12B抗体
描述	兔多克隆抗体to CLEC12B
宿主	Rabbit
经测试应用	适用于: IHC-P, WB
种属反应性	与反应: Mouse, Human 预测可用于: Cow 
免疫原	Synthetic peptide within Human CLEC12B aa 200 to the C-terminus (C terminal) conjugated to keyhole limpet haemocyanin. The exact immunogen sequence used to generate this antibody is proprietary information. If additional detail on the immunogen is needed to determine the suitability of the antibody for your needs, please contact our Scientific Support team to discuss your requirements. NCBI Accession No. NP_001123470.1. Database link: Q2HXU8  Run BLAST with  Run BLAST with
阳性对照	Human pancreas tissue; K562 cell lysate; Mouse testis tissue lysate.
常规说明	The Life Science industry has been in the grips of a reproducibility crisis for a number of years. Abcam is leading the way in addressing this with our range of recombinant monoclonal antibodies and knockout edited cell lines for gold-standard validation. Please check that this product meets your needs before purchasing. If you have any questions, special requirements or concerns, please send us an inquiry and/or contact our Support team ahead of purchase. Recommended alternatives for this product can be found below, along with publications, customer reviews and Q&As

性能

形式	Liquid
存放说明	Shipped at 4°C. Store at +4°C short term (1-2 weeks). Upon delivery aliquot. Store at -20°C long term. Avoid freeze / thaw cycle.
存储溶液	pH: 7.4 Preservative: 0.09% Sodium azide Constituent: 99% PBS
纯度	Immunogen affinity purified

克隆 多克隆
同种型 IgG

应用

The Abpromise guarantee **Abpromise™**承诺保证使用ab211452于以下的经测试应用

“应用说明”部分 下显示的仅为推荐的起始稀释度;实际最佳的稀释度/浓度应由使用者检定。

应用	Ab评论	说明
IHC-P		1/100. Perform heat mediated antigen retrieval before commencing with IHC staining protocol.
WB		1/1000. Predicted molecular weight: 32 kDa.

靶标

功能 Cell surface receptor that protects target cells against natural killer cell-mediated lysis. Modulates signaling cascades and mediates tyrosine phosphorylation of target MAP kinases.

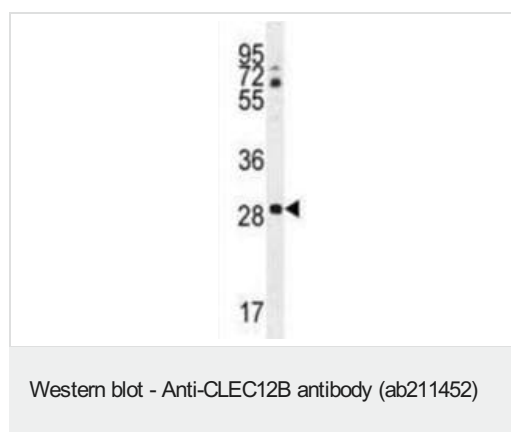
组织特异性 Detected in colon, heart, kidney, liver, lung, mammary gland, ovary, spleen and testis.

序列相似性 Contains 1 C-type lectin domain.

结构域 Contains 1 copy of a cytoplasmic motif that is referred to as the immunoreceptor tyrosine-based inhibitor motif (ITIM). This motif is involved in modulation of cellular responses. The phosphorylated ITIM motif can bind the SH2 domain of several SH2-containing phosphatases.

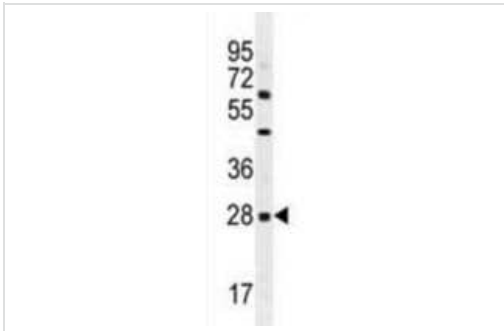
细胞定位 Cell membrane.

图片



Anti-CLEC12B antibody (ab211452) at 1/1000 dilution + K562 cell lysate at 35 µg

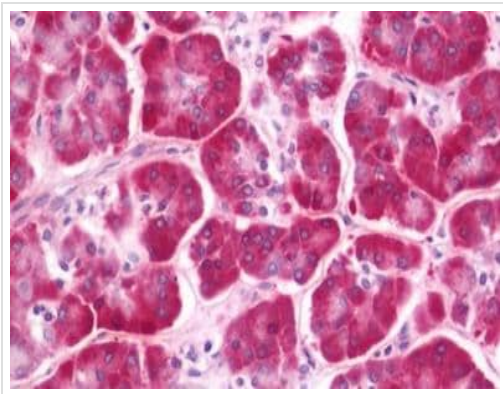
Predicted band size: 32 kDa



Western blot - Anti-CLEC12B antibody (ab211452)

Anti-CLEC12B antibody (ab211452) at 1/1000 dilution + Mouse testis tissue lysate at 35 μ g

Predicted band size: 32 kDa



Immunohistochemical analysis of formalin fixed, paraffin embedded Human pancreas tissue labeling CLEC12B with ab211452 at 1/100 dilution.

Immunohistochemistry (Formalin/PFA-fixed paraffin-embedded sections) - Anti-CLEC12B antibody (ab211452)

Please note: All products are "FOR RESEARCH USE ONLY. NOT FOR USE IN DIAGNOSTIC PROCEDURES"

Our Abpromise to you: Quality guaranteed and expert technical support

- Replacement or refund for products not performing as stated on the datasheet
- Valid for 12 months from date of delivery
- Response to your inquiry within 24 hours
- We provide support in Chinese, English, French, German, Japanese and Spanish
- Extensive multi-media technical resources to help you
- We investigate all quality concerns to ensure our products perform to the highest standards

If the product does not perform as described on this datasheet, we will offer a refund or replacement. For full details of the Abpromise, please visit <https://www.abcam.cn/abpromise> or contact our technical team.

Terms and conditions

- Guarantee only valid for products bought direct from Abcam or one of our authorized distributors