

Anti-CLCA1 antibody [EPR12254-88] ab180851

重组 RabMAb

★★★★★ **3 Abreviews** **15 References** **9 图像**

概述

| | |
|-------|---|
| 产品名称 | Anti-CLCA1抗体[EPR12254-88] |
| 描述 | 兔单克隆抗体[EPR12254-88] to CLCA1 |
| 宿主 | Rabbit |
| 特异性 | The mouse and rat recommendation is based on the WB results. We do not guarantee IHC-P for mouse and rat. |
| 经测试应用 | 适用于: Flow Cyt (Intra), IHC-P, WB, ICC/IF |
| 种属反应性 | 与反应: Mouse, Rat, Human |
| 免疫原 | Recombinant fragment within Human CLCA1. The exact sequence is proprietary. Database link: A8K7I4 |
| 阳性对照 | Human colon cancer and human small intestine lysates; human colon tissue; A431 cells. |
| 常规说明 | <p>This product is a recombinant monoclonal antibody, which offers several advantages including:</p> <ul style="list-style-type: none"> - High batch-to-batch consistency and reproducibility - Improved sensitivity and specificity - Long-term security of supply - Animal-free production <p>For more information see here.</p> <p>Our RabMAb[®] technology is a patented hybridoma-based technology for making rabbit monoclonal antibodies. For details on our patents, please refer to RabMAb[®] patents.</p> |

性能

| | |
|------|---|
| 形式 | Liquid |
| 存放说明 | Shipped at 4°C. Store at +4°C short term (1-2 weeks). Upon delivery aliquot. Store at -20°C long term. Avoid freeze / thaw cycle. |
| 存储溶液 | pH: 7.20 Preservative: 0.01% Sodium azide Constituents: PBS, 40% Glycerol (glycerin, glycerine), 0.21% BSA |
| 纯度 | Protein A purified |
| 克隆 | 单克隆 |

克隆编号EPR12254-88

同种型IgG

应用

The Abpromise guarantee

Abpromise™承诺保证使用ab180851于以下的经测试应用

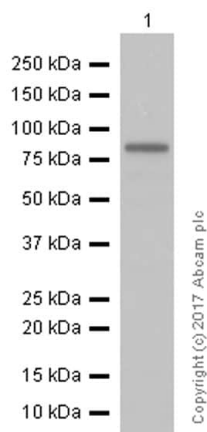
“应用说明”部分 下显示的仅为推荐的起始稀释度;实际最佳的稀释度/浓度应由使用者检定。

| 应用 | Ab评论 | 说明 |
|------------------|-----------|---|
| Flow Cyt (Intra) | | Use at an assay dependent concentration. |
| IHC-P | ★★★★★ (1) | 1/4000. Perform heat mediated antigen retrieval with Tris/EDTA buffer pH 9.0 before commencing with IHC staining protocol. The mouse and rat recommendation is based on the WB results. We do not guarantee IHC-P for mouse and rat. For unpurified use at 1/100 - 1/250. |
| WB | ★★★★★ (1) | 1/1000 - 1/10000. Predicted molecular weight: 100 kDa. |
| ICC/IF | ★★★★★ (1) | 1/50 - 1/100. |

靶标

| | |
|-------|--|
| 功能 | May be involved in mediating calcium-activated chloride conductance. May play critical roles in goblet cell metaplasia, mucus hypersecretion, cystic fibrosis and AHR. May be involved in the regulation of mucus production and/or secretion by goblet cells. Involved in the regulation of tissue inflammation in the innate immune response. May play a role as a tumor suppressor. Induces MUC5AC. |
| 组织特异性 | Highly expressed in small intestine and colon namely in intestinal basal crypt epithelia and goblet cells, and appendix. Weakly expressed in uterus, testis and kidney. Expressed in the airways epithelium of both asthmatic and healthy patients. Expressed in the bronchial epithelium, especially in mucus-producing goblet cells. Expressed in normal turbinate mucosa and nasal polyp. Expressed in. |
| 序列相似性 | Belongs to the CLCR family. Contains 1 VWFA domain. |
| 翻译后修饰 | Glycosylated. The 125-kDa product is processed and yields to two cell-surface-associated subunits, a 90-kDa protein and a group of 37-to 41-kDa proteins. |
| 细胞定位 | Secreted > extracellular space. Cell membrane. Protein that remains attached to the plasma membrane appeared to be predominantly localized to microvilli. |

图片



Western blot - Anti-CLCA1 antibody [EPR12254-88] (ab180851)

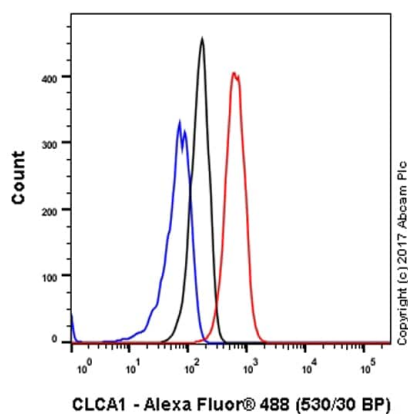
Anti-CLCA1 antibody [EPR12254-88] (ab180851) at 1/10000 dilution (purified) + Human small intestine lysates at 15 µg

Secondary

Anti-Rabbit IgG (HRP), specific to the non-reduced form of IgG at 1/2000 dilution

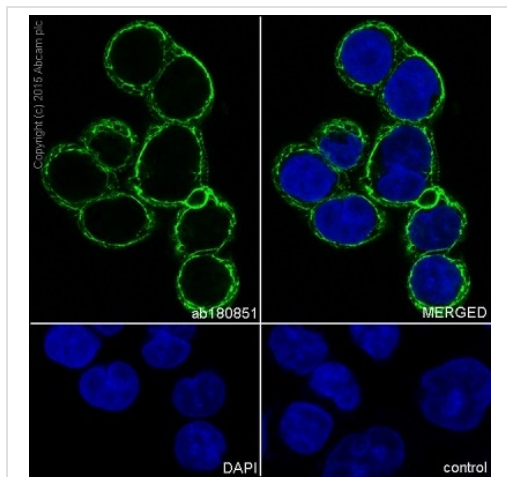
Predicted band size: 100 kDa

Blocking and diluting buffer: 5% NFDM/TBST



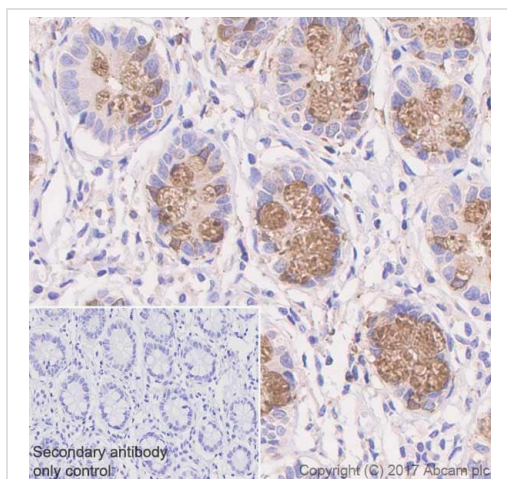
Flow Cytometry (Intracellular) - Anti-CLCA1 antibody [EPR12254-88] (ab180851)

Intracellular Flow Cytometry analysis of A431 (Human epidermoid carcinoma epithelial cell) cells labeling CLCA1 with purified ab180851 at 1/20 dilution (10 µg/ml) (red). Cells were fixed with 4% Paraformaldehyde and permeabilised with 90% methanol. A Goat anti rabbit IgG (Alexa Fluor® 488) secondary antibody was used at 1/2000 dilution. Isotype control - Rabbit monoclonal IgG (Black). Unlabeled control - Cell without incubation with primary antibody and secondary antibody (Blue).



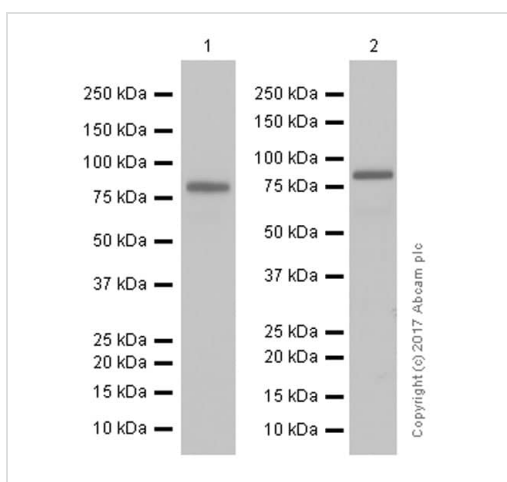
Immunocytochemistry/ Immunofluorescence - Anti-CLCA1 antibody [EPR12254-88] (ab180851)

Immunocytochemistry/ Immunofluorescence analysis of SW480 (Human colorectal adenocarcinoma epithelial cell) cells labeling CLCA1 with Purified ab180851 at 1:100 dilution. Cells were fixed in 100% Methanol. [ab150077](#) Goat anti rabbit IgG(Alexa Fluor® 488) was used as the secondary antibody at 1:1000 dilution. DAPI nuclear counterstain. PBS instead of the primary antibody was used as the secondary antibody only control.



Immunohistochemistry (Formalin/PFA-fixed paraffin-embedded sections) - Anti-CLCA1 antibody [EPR12254-88] (ab180851)

Immunohistochemistry (Formalin/PFA-fixed paraffin-embedded sections) analysis of Human small intestine tissue sections labeling CLCA1 with Purified ab180851 at 1:4000 dilution (0.07 µg/ml). Heat mediated antigen retrieval was performed using [ab93684](#) (Tris/EDTA buffer, pH 9.0). Tissue was counterstained with Hematoxylin. ImmunoHistoProbe one step HRP Polymer (ready to use) secondary antibody was used at 1:0 dilution. PBS instead of the primary antibody was used as the negative control.



Western blot - Anti-CLCA1 antibody [EPR12254-88] (ab180851)

All lanes : Anti-CLCA1 antibody [EPR12254-88] (ab180851) at 1/50000 dilution (purified)

Lane 1 : Rat small intestine lysates

Lane 2 : Mouse small intestine lysates

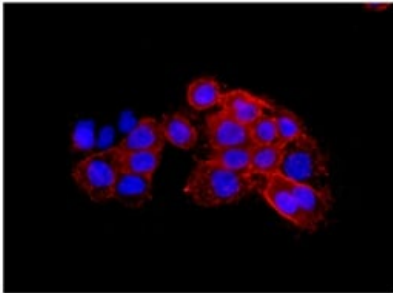
Lysates/proteins at 15 µg per lane.

Secondary

All lanes : Goat Anti-Rabbit IgG H&L (HRP) ([ab97051](#)) at 1/20000 dilution

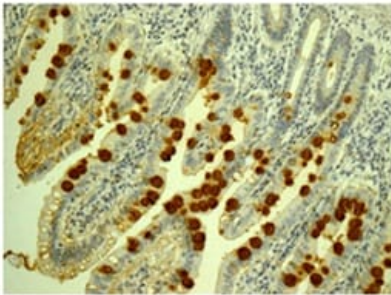
Predicted band size: 100 kDa

Blocking and diluting buffer: 5% NFDM/TBST



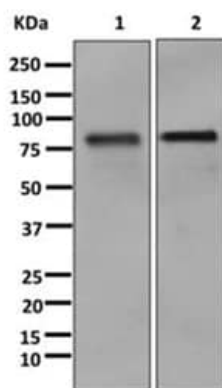
Immunocytochemistry/ Immunofluorescence - Anti-CLCA1 antibody [EPR12254-88] (ab180851)

Immunofluorescence analysis of A431 cells labeling CLCA1 using unpurified ab180851 at 1/50 dilution.



Immunohistochemistry (Formalin/PFA-fixed paraffin-embedded sections) - Anti-CLCA1 antibody [EPR12254-88] (ab180851)

Immunohistochemical analysis of paraffin-embedded human colon tissue labeling CLCA1 using unpurified ab180851 at 1/100 dilution.



Western blot - Anti-CLCA1 antibody [EPR12254-88] (ab180851)

All lanes : Anti-CLCA1 antibody [EPR12254-88] (ab180851) at 1/1000 dilution (unpurified)





Lane 1 : Human colon cancer lysates

Lane 2 : Human small intestine lysates

Lysates/proteins at 10 µg per lane.

Predicted band size: 100 kDa

Why choose a recombinant antibody?

| | |
|--|--|
|  <p>Research with confidence Consistent and reproducible results</p> |  <p>Long-term and scalable supply Recombinant technology</p> |
|  <p>Success from the first experiment Confirmed specificity</p> |  <p>Ethical standards compliant Animal-free production</p> |

Anti-CLCA1 antibody [EPR12254-88] (ab180851)

Please note: All products are "FOR RESEARCH USE ONLY. NOT FOR USE IN DIAGNOSTIC PROCEDURES"

Our Abpromise to you: Quality guaranteed and expert technical support

- Replacement or refund for products not performing as stated on the datasheet
- Valid for 12 months from date of delivery
- Response to your inquiry within 24 hours
- We provide support in Chinese, English, French, German, Japanese and Spanish
- Extensive multi-media technical resources to help you
- We investigate all quality concerns to ensure our products perform to the highest standards

If the product does not perform as described on this datasheet, we will offer a refund or replacement. For full details of the Abpromise, please visit <https://www.abcam.cn/abpromise> or contact our technical team.

Terms and conditions

- Guarantee only valid for products bought direct from Abcam or one of our authorized distributors