

### Anti-Claudin 7/CLDN-7 antibody ab27487

★★★★★ [12 Abreviews](#) [39 References](#) [1 图像](#)

#### 概述

产品名称	Anti-Claudin 7/CLDN-7抗体
描述	兔多克隆抗体to Claudin 7/CLDN-7
宿主	Rabbit
经测试应用	适用于: ICC, IHC-Fr, WB, IHC-P, ICC/IF
种属反应性	与反应: Mouse, Rat, Human
免疫原	Synthetic peptide within Human Claudin 7/CLDN-7 aa 150 to the C-terminus (C terminal). The exact sequence is proprietary. Database link: <a href="#">O95471</a>
常规说明	<p><b>This product is FOR RESEARCH USE ONLY. For commercial use, please contact <a href="mailto:partnerships@abcam.com">partnerships@abcam.com</a>.</b></p> <p>The Life Science industry has been in the grips of a reproducibility crisis for a number of years. Abcam is leading the way in addressing this with our range of recombinant monoclonal antibodies and knockout edited cell lines for gold-standard validation. Please check that this product meets your needs before purchasing.</p> <p>If you have any questions, special requirements or concerns, please send us an inquiry and/or contact our Support team ahead of purchase. Recommended alternatives for this product can be found below, along with publications, customer reviews and Q&amp;As</p>

#### 性能

形式	Liquid
存放说明	Shipped at 4°C. Upon delivery aliquot and store at -20°C. Avoid freeze / thaw cycles.
存储溶液	pH: 7.60 Preservative: 0.1% Sodium azide Constituents: PBS, 1% BSA
纯度	Immunogen affinity purified
纯化说明	Ab27487 is affinity purified.
克隆	多克隆
同种型	IgG

应用

**The Abpromise guarantee**      **Abpromise™**承诺保证使用ab27487于以下的经测试应用

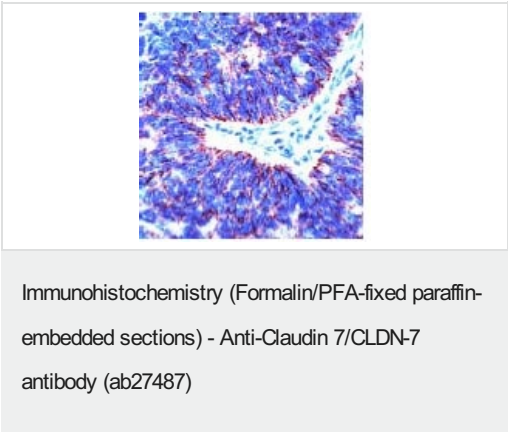
“应用说明”部分 下显示的仅为推荐的起始稀释度;实际最佳的稀释度/浓度应由使用者检定。

应用	Ab评论	说明
ICC	★★★★★ (1)	Use at an assay dependent concentration.
IHC-Fr	★★★★★ (3)	Use at an assay dependent concentration.
WB	★★★★★ (5)	Use at an assay dependent concentration. Predicted molecular weight: 22 kDa.
IHC-P	★★★★★ (3)	1/200. Perform heat mediated antigen retrieval before commencing with IHC staining protocol. In particular, boil tissue sections in 10mM citrate buffer pH 6.0 for 10 min then cool at room temperature for 20 min.
ICC/IF		Use at an assay dependent concentration. PubMed: 21525338

靶标

功能	Plays a major role in tight junction-specific obliteration of the intercellular space.
组织特异性	Expressed in kidney, lung and prostate. Isoform 1 seems to be predominant, except in some normal prostate samples, where isoform 2 is the major form. Down-regulated in breast cancers, including ductal carcinoma in situ (DCIS), lobular carcinoma in situ (LCIS) and invasive ductal carcinoma (IDC) (at protein level), as well as in several cancer cell lines. Loss of expression correlates with histological grade, occurring predominantly in high-grade lesions.
序列相似性	Belongs to the claudin family.
翻译后修饰	Phosphorylated.
细胞定位	Cell membrane. Lateral cell membrane. Cell junction > tight junction. Co-localizes with EPCAM at the lateral cell membrane and tight junction.

图片



Ab27487, at a dilution of 1/200, staining Claudin 7/CLDN-7 in formalin fixed paraffin embedded human colon carcinoma tissue section by Immunohistochemistry.

**Please note:** All products are "FOR RESEARCH USE ONLY. NOT FOR USE IN DIAGNOSTIC PROCEDURES"

### **Our Abpromise to you: Quality guaranteed and expert technical support**

---

- Replacement or refund for products not performing as stated on the datasheet
- Valid for 12 months from date of delivery
- Response to your inquiry within 24 hours
  
- We provide support in Chinese, English, French, German, Japanese and Spanish
- Extensive multi-media technical resources to help you
- We investigate all quality concerns to ensure our products perform to the highest standards

If the product does not perform as described on this datasheet, we will offer a refund or replacement. For full details of the Abpromise, please visit <https://www.abcam.cn/abpromise> or contact our technical team.

### **Terms and conditions**

---

- Guarantee only valid for products bought direct from Abcam or one of our authorized distributors