


### Anti-Claudin 4 antibody ab53156

★★★★★ [6 Abreviews](#) [34 References](#) [4 图像](#)

#### 概述

|       |   |
|-------|---|
| 产品名称  | Anti-Claudin 4抗体  |
| 描述    | 兔多克隆抗体to Claudin 4  |
| 宿主    | Rabbit  |
| 经测试应用 | 适用于: IHC-P, ICC/IF, WB  |
| 种属反应性 | 与反应: Human<br>预测可用于: Mouse, Rat, Pig   |
| 免疫原   | Synthetic peptide within Human Claudin 4 aa 160-209. The exact sequence is proprietary.<br>Database link: <a href="#">O14493</a>  |
| 阳性对照  | WB: Untreated HeLa cell extracts, Wild-type MCF7, PC-3, LNCaP and SW480 cell lysates. IHC-P: Human colon tissue. ICC/IF: MCF7 cells.  |
| 常规说明  | <p>The Life Science industry has been in the grips of a reproducibility crisis for a number of years. Abcam is leading the way in addressing this with our range of recombinant monoclonal antibodies and knockout edited cell lines for gold-standard validation. Please check that this product meets your needs before purchasing.</p> <p>If you have any questions, special requirements or concerns, please send us an inquiry and/or contact our Support team ahead of purchase. Recommended alternatives for this product can be found below, along with publications, customer reviews and Q&amp;As</p> |

#### 性能

|      |  |
|------|--|
| 形式   | Liquid   |
| 存放说明 | Shipped at 4°C. Upon delivery aliquot and store at -20°C. Avoid freeze / thaw cycles.                  |
| 存储溶液 | pH: 7.40<br>Preservative: 0.02% Sodium azide<br>Constituents: 50% Glycerol, 0.87% Sodium chloride, PBS |
| 纯度   | Without Mg+2 and Ca+2<br>Immunogen affinity purified   |
| 克隆   | 多克隆  |
| 同种型  | IgG  |

应用

**The Abpromise guarantee**      **Abpromise™**承诺保证使用ab53156于以下的经测试应用

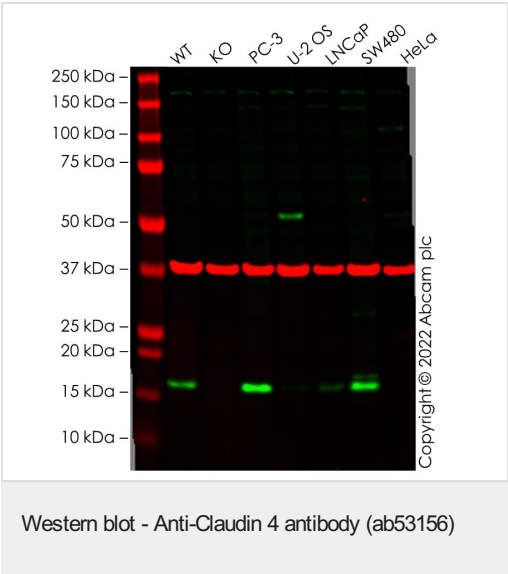
“应用说明”部分 下显示的仅为推荐的起始稀释度;实际最佳的稀释度/浓度应由使用者检定。

| 应用     | Ab评论      | 说明   |
|--------|-----------|--|
| IHC-P  | ★★★★★ (3) | Use a concentration of 4 µg/ml. Perform heat mediated antigen retrieval with Tris/EDTA buffer pH 9.0 before commencing with IHC staining protocol. |
| ICC/IF | ★★★★★ (1) | Use a concentration of 5 µg/ml.  |
| WB     |           | 1/500 - 1/1000. Detects a band of approximately 22 kDa (predicted molecular weight: 22 kDa).   |

靶标

|       |   |
|-------|---|
| 功能    | Plays a major role in tight junction-specific obliteration of the intercellular space.  |
| 疾病相关  | Note=CLDN4 is located in the Williams-Beuren syndrome (WBS) critical region. WBS results from a hemizygous deletion of several genes on chromosome 7q11.23, thought to arise as a consequence of unequal crossing over between highly homologous low-copy repeat sequences flanking the deleted region. |
| 序列相似性 | Belongs to the claudin family.  |
| 细胞定位  | Cell junction > tight junction. Cell membrane.  |

图片



**All lanes :** Anti-Claudin 4 antibody (ab53156) at 1/500 dilution

- Lane 1 :** Wild-type MCF7 cell lysate
- Lane 2 :** CLDN4 knockout MCF7 cell lysate
- Lane 3 :** PC-3 cell lysate
- Lane 4 :** U-2 OS cell lysate
- Lane 5 :** LNCaP cell lysate
- Lane 6 :** SW480 cell lysate
- Lane 7 :** HeLa cell lysate

Lysates/proteins at 20 µg per lane.

**Secondary**

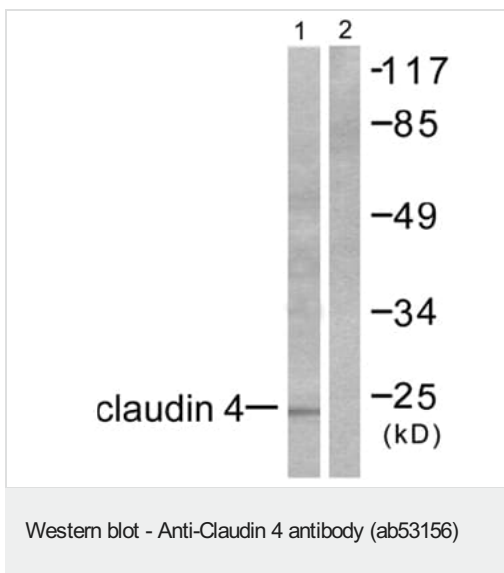
**All lanes :** Goat anti-Rabbit IgG H&L 800CW and Goat anti-Mouse IgG H&L 680RD at 1/20000 dilution

Performed under reducing conditions.

**Predicted band size:** 22 kDa

**Observed band size:** 17 kDa

False colour image of Western blot: Anti-Claudin 4 antibody staining at 1/500 dilution, shown in green; Mouse anti-GAPDH antibody [6C5] ([ab8245](#)) loading control staining at 1/20000 dilution, shown in red. In Western blot, ab53156 was shown to bind specifically to Claudin 4. A band was observed at 17 kDa in wild-type MCF7 cell lysates with no signal observed at this size in CLDN4 knockout cell line [ab274946](#) (knockout cell lysate [ab275004](#)). To generate this image, wild-type and CLDN4 knockout MCF7 cell lysates were analysed. First, samples were run on an SDS-PAGE gel then transferred onto a nitrocellulose membrane. Membranes were blocked in fluorescent western blot (TBS-based) blocking solution before incubation with primary antibodies overnight at 4 °C. Blots were washed four times in TBS-T, incubated with secondary antibodies for 1 h at room temperature, washed again four times then imaged. Secondary antibodies used were Goat anti-Rabbit IgG H&L 800CW and Goat anti-Mouse IgG H&L 680RD at 1/20000 dilution.



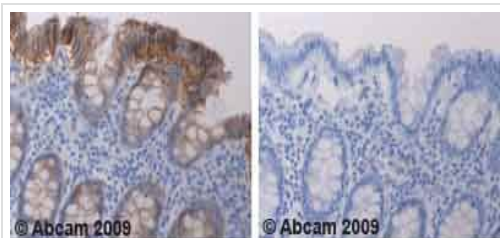
**All lanes :** Anti-Claudin 4 antibody (ab53156) at 1/500 dilution

**Lane 1 :** Untreated HeLa (Human epithelial cell line from cervix adenocarcinoma) cell extracts

**Lane 2 :** HeLa (Human epithelial cell line from cervix adenocarcinoma) cell extracts with immunizing peptide

**Predicted band size:** 22 kDa

**Observed band size:** 22 kDa



Immunohistochemistry (Formalin/PFA-fixed paraffin-embedded sections) - Anti-Claudin 4 antibody (ab53156)

ab53156 staining Claudin 4 in human colon tissue. Staining is localized to the cell membrane.

**Left panel:** ab53156 at 4 µg/ml.

**Right panel:** Isotype control.

Sections were stained using an automated system at room temperature. Sections were rehydrated and antigen retrieved with EDTA pH 9.0. Slides were blocked in 3% H<sub>2</sub>O<sub>2</sub> in methanol for 10 minutes. They were then blocked again for 10 minutes (containing casein 0.25% in PBS) then incubated with primary antibody for 20 minutes and detected for 30 minutes. Colorimetric detection was completed with diaminobenzidine for 5 minutes. Slides were counterstained with hematoxylin and coverslipped. Please note that for manual staining we recommend to optimize the primary antibody concentration and incubation time (overnight incubation), and amplification may be required.

Immunocytochemistry/ Immunofluorescence - Anti-Claudin 4 antibody (ab53156)

ICC/IF image of ab53156 staining Claudin 4 (green) in MCF7 (Human breast adenocarcinoma cell line) cells. The cells were fixed in 4% formaldehyde (10 minutes) and then incubated in 1%BSA / 10% normal goat serum / 0.3M glycine in 0.1% PBS-Tween for 1 hour to permeabilize the cells and block non-specific protein-protein interactions. The cells were then incubated with the antibody (ab53156, 5 µg/ml) overnight at +4°C. The secondary antibody was an Alexa Fluor<sup>®</sup> 488 goat anti-rabbit IgG (H+L) used at a 1/1000 dilution for 1 hour. An Alexa Fluor<sup>®</sup> 594 WGA was used to label plasma membranes (red) at a 1/200 dilution for 1 hour. DAPI was used to stain the cell nuclei (blue) at a concentration of 1.43 µM.

**Please note:** All products are "FOR RESEARCH USE ONLY. NOT FOR USE IN DIAGNOSTIC PROCEDURES"

### Our Abpromise to you: Quality guaranteed and expert technical support

- Replacement or refund for products not performing as stated on the datasheet
- Valid for 12 months from date of delivery
- Response to your inquiry within 24 hours
- We provide support in Chinese, English, French, German, Japanese and Spanish
- Extensive multi-media technical resources to help you
- We investigate all quality concerns to ensure our products perform to the highest standards

If the product does not perform as described on this datasheet, we will offer a refund or replacement. For full details of the Abpromise, please visit <https://www.abcam.cn/abpromise> or contact our technical team.

## Terms and conditions

---

- Guarantee only valid for products bought direct from Abcam or one of our authorized distributors