


Anti-Claspin antibody ab3721

1 References [2 图像](#)

概述

产品名称	Anti-Claspin抗体
描述	兔多克隆抗体to Claspin
宿主	Rabbit
经测试应用	适用于: WB, IP
种属反应性	与反应: Human 预测可用于: Chimpanzee, Gorilla 
免疫原	Synthetic peptide (Human) - which represents a portion of human Claspin encoded within exon 15.
阳性对照	HeLa cell lysate.
常规说明	<p>The Life Science industry has been in the grips of a reproducibility crisis for a number of years. Abcam is leading the way in addressing this with our range of recombinant monoclonal antibodies and knockout edited cell lines for gold-standard validation. Please check that this product meets your needs before purchasing.</p> <p>If you have any questions, special requirements or concerns, please send us an inquiry and/or contact our Support team ahead of purchase. Recommended alternatives for this product can be found below, along with publications, customer reviews and Q&As</p>

性能

形式	Liquid
存放说明	Shipped at 4°C. Upon delivery aliquot and store at -20°C. Avoid freeze / thaw cycles.
存储溶液	<p>pH: 7</p> <p>Preservative: 0.1% Sodium azide</p> <p>Constituents: 0.021% PBS, 1.764% Sodium citrate, 1.815% Tris</p>
纯度	Immunogen affinity purified
克隆	多克隆
同种型	IgG

应用

The Abpromise guarantee**Abpromise™**承诺保证使用ab3721于以下的经测试应用

“应用说明”部分 下显示的仅为推荐的起始稀释度;实际最佳的稀释度/浓度应由使用者检定。

应用	Ab评论	说明
WB		1/1000 - 1/10000. Detects a band of approximately 180 kDa (predicted molecular weight: 150 kDa).
IP		Use at 2-10 µg/mg of lysate.

靶标**功能**

Required for checkpoint mediated cell cycle arrest in response to inhibition of DNA replication or to DNA damage induced by both ionizing and UV irradiation. Adapter protein which binds to BRCA1 and the checkpoint kinase CHEK1 and facilitates the ATR-dependent phosphorylation of both proteins. Can also bind specifically to branched DNA structures and may associate with S-phase chromatin following formation of the pre-replication complex (pre-RC). This may indicate a role for this protein as a sensor which monitors the integrity of DNA replication forks.

序列相似性

Belongs to the clasp family.

结构域

The C-terminus of the protein contains 3 potential CHEK1-binding motifs (CKB motifs). Potential phosphorylation sites within CKB motif 1 and CKB motif 2 are required for interaction with CHEK1.

翻译后修饰

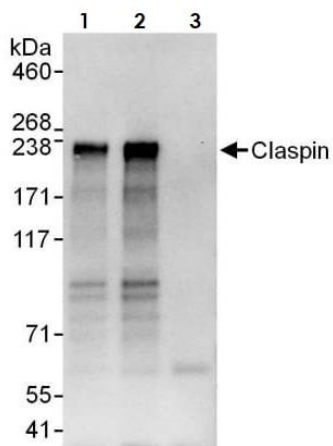
Phosphorylated. Undergoes ATR-dependent phosphorylation by CHEK1 during activation of DNA replication or damage checkpoints. Phosphorylation by CSNK1G1/CK1 promotes CHEK1 binding.

Ubiquitinated by the anaphase promoting complex/cyclosome (APC/C) during G1 phase, leading to its degradation by the proteasome. Ubiquitination is mediated via its interaction with FZR1/CDH1. Following DNA damage, it is deubiquitinated by USP28 in G2 phase, preventing its degradation.

细胞定位

Nucleus.

图片



Immunoprecipitation - Anti-Claspin antibody
(ab3721)

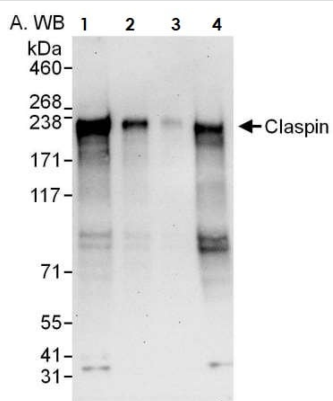
Claspin was immunoprecipitated from HeLa whole cell lysate (1 mg per IP reaction, 20% loaded) with ab3721 at 6 µg per reaction. Western blot was performed on the immunoprecipitate using ab3721 at 0.1 µg/mL.

Lane 1: ab3721 IP in HeLa whole cell lysate.

Lane 2: ab3721 IP in HeLa whole cell lysate.

Lane 3: Control IgG in HeLa whole cell lysate.

Detection: Chemiluminescence with an exposure time of 10 seconds



Western blot - Anti-Claspin antibody (ab3721)

All lanes : Anti-Claspin antibody (ab3721) at 0.1 µg/ml

Lane 1 : HeLa whole cell lysate at 50 µg

Lane 2 : HeLa whole cell lysate at 15 µg

Lane 3 : HeLa whole cell lysate at 5 µg

Lane 4 : HEK293T whole cell lysate at 50 µg

Predicted band size: 150 kDa

Exposure time: 30 seconds

Please note: All products are "FOR RESEARCH USE ONLY. NOT FOR USE IN DIAGNOSTIC PROCEDURES"

Our Abpromise to you: Quality guaranteed and expert technical support

- Replacement or refund for products not performing as stated on the datasheet
- Valid for 12 months from date of delivery
- Response to your inquiry within 24 hours
- We provide support in Chinese, English, French, German, Japanese and Spanish
- Extensive multi-media technical resources to help you
- We investigate all quality concerns to ensure our products perform to the highest standards

If the product does not perform as described on this datasheet, we will offer a refund or replacement. For full details of the Abpromise, please visit <https://www.abcam.cn/abpromise> or contact our technical team.

Terms and conditions

- Guarantee only valid for products bought direct from Abcam or one of our authorized distributors