

Anti-CLASP1 antibody [KT67] ab95372

敲除 验证

1 图像

概述

产品名称	Anti-CLASP1抗体[KT67]
描述	大鼠单克隆抗体[KT67] to CLASP1
宿主	Rat
经测试应用	适用于: WB
种属反应性	与反应: Human
免疫原	Fusion protein corresponding to Human CLASP1 (N terminal). Database link: Q7Z460
常规说明	<p>The Life Science industry has been in the grips of a reproducibility crisis for a number of years. Abcam is leading the way in addressing this with our range of recombinant monoclonal antibodies and knockout edited cell lines for gold-standard validation. Please check that this product meets your needs before purchasing.</p> <p>If you have any questions, special requirements or concerns, please send us an inquiry and/or contact our Support team ahead of purchase. Recommended alternatives for this product can be found below, along with publications, customer reviews and Q&As</p>

性能

形式	Liquid
存放说明	Shipped at 4°C. Upon delivery aliquot and store at -20°C. Avoid freeze / thaw cycles.
存储溶液	Preservative: 0.09% Sodium azide Constituent: PBS
纯度	Protein G purified
克隆	单克隆
克隆编号	KT67
同种型	IgG2a

应用

“应用说明”部分 下显示的仅为推荐的起始稀释度；实际最佳的稀释度/浓度应由使用者检定。

应用	Ab评论	说明
WB		1/500 - 1/5000. Predicted molecular weight: 169 kDa.

靶标

功能

Microtubule plus-end tracking protein that promotes the stabilization of dynamic microtubules. Involved in the nucleation of noncentrosomal microtubules originating from the trans-Golgi network (TGN). Required for the polarization of the cytoplasmic microtubule arrays in migrating cells towards the leading edge of the cell. May act at the cell cortex to enhance the frequency of rescue of depolymerizing microtubules by attaching their plus-ends to cortical platforms composed of ERC1 and PHLDB2. This cortical microtubule stabilizing activity is regulated at least in part by phosphatidylinositol 3-kinase signaling. Also performs a similar stabilizing function at the kinetochore which is essential for the bipolar alignment of chromosomes on the mitotic spindle.

序列相似性

Belongs to the CLASP family.
Contains 7 HEAT repeats.

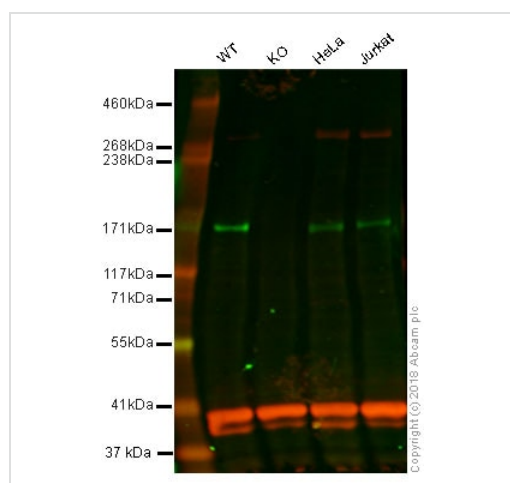
翻译后修饰

Phosphorylated upon DNA damage, probably by ATM or ATR.

细胞定位

Cytoplasm > cytoskeleton. Cytoplasm > cytoskeleton > centrosome. Chromosome > centromere > kinetochore. Cytoplasm > cytoskeleton > spindle. Golgi apparatus > trans-Golgi network. Localizes to microtubule plus ends. Localizes to centrosomes, kinetochores and the mitotic spindle from prometaphase. Subsequently localizes to the spindle midzone from anaphase and to the midbody from telophase. In migrating cells localizes to the plus ends of microtubules within the cell body and to the entire microtubule lattice within the lamella. Localizes to the cell cortex and this requires ERC1 and PHLDB2.

图片



Western blot - Anti-CLASP1 antibody [KT67]
(ab95372)

All lanes : Anti-CLASP1 antibody [KT67] (ab95372) at 1/1000 dilution

Lane 1 : Wild-type HAP1 whole cell lysate

Lane 2 : CLASP1 knockout HAP1 whole cell lysate

Lane 3 : HeLa whole cell lysate

Lane 4 : Jurkat whole cell lysate

Lysates/proteins at 20 µg per lane.

Predicted band size: 169 kDa

Lanes 1 - 4: Merged signal (red and green). Green - ab95372

observed at 169 kDa. Red - loading control, **ab176560**, observed at 50 kDa.

ab95372 was shown to specifically react with CLASP1 in wild-type HAP1 cells as signal was lost in CLASP1 knockout cells. Wild-type and CLASP1 knockout samples were subjected to SDS-PAGE. Ab95372 and **ab176560** (Rabbit anti-alpha Tubulin loading control) were incubated overnight at 4°C at 1/1000 dilution and 1/20000 dilution respectively. Blots were developed with Goat anti-Rat IgG H&L (IRDye® 800CW) (**ab253031**) and Goat anti-Rabbit IgG H&L (IRDye® 680RD) preabsorbed **ab216777** secondary antibodies at 1/20000 dilution for 1 hour at room temperature before imaging.

Please note: All products are "FOR RESEARCH USE ONLY. NOT FOR USE IN DIAGNOSTIC PROCEDURES"

Our Abpromise to you: Quality guaranteed and expert technical support

- Replacement or refund for products not performing as stated on the datasheet
- Valid for 12 months from date of delivery
- Response to your inquiry within 24 hours

- We provide support in Chinese, English, French, German, Japanese and Spanish
- Extensive multi-media technical resources to help you
- We investigate all quality concerns to ensure our products perform to the highest standards

If the product does not perform as described on this datasheet, we will offer a refund or replacement. For full details of the Abpromise, please visit <https://www.abcam.cn/abpromise> or contact our technical team.

Terms and conditions

- Guarantee only valid for products bought direct from Abcam or one of our authorized distributors