

Anti-CLASP1 antibody [EPR3409] ab108620

敲除验证
重组
RabMAb

★★★★★
[1 Abreviews](#)
[11 References](#)
[12 图像](#)

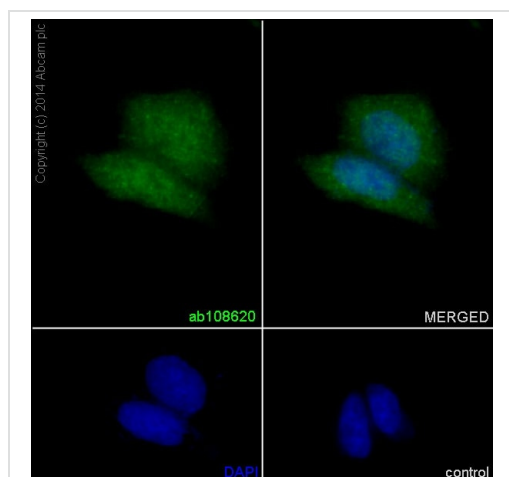
概述

产品名称	Anti-CLASP1抗体[EPR3409]
描述	兔单克隆抗体[EPR3409] to CLASP1
宿主	Rabbit
经测试应用	适用于: Flow Cyt (Intra), ICC/IF, WB, IHC-P 不适用于: IP
种属反应性	与反应: Mouse, Rat, Human
免疫原	Synthetic peptide. This information is proprietary to Abcam and/or its suppliers.
阳性对照	WB: U87-MG, HeLa, T47-D and C6 cell lysates and rat brain tissue lysate. IHC-P: Human and mouse kidney and human cerebral cortex tissues. ICC/IF: HeLa cells. Flow Cyt (intra): HeLa cells.
常规说明	<p>This product is a recombinant monoclonal antibody, which offers several advantages including:</p> <ul style="list-style-type: none"> - High batch-to-batch consistency and reproducibility - Improved sensitivity and specificity - Long-term security of supply - Animal-free production <p>For more information see here.</p> <p>Our RabMAb[®] technology is a patented hybridoma-based technology for making rabbit monoclonal antibodies. For details on our patents, please refer to RabMAb[®] patents.</p>

性能

形式	Liquid
存放说明	Shipped at 4°C. Store at +4°C short term (1-2 weeks). Upon delivery aliquot. Store at -20°C. Stable for 12 months at -20°C.
存储溶液	pH: 7.20 Preservative: 0.01% Sodium azide Constituents: 40% Glycerol (glycerin, glycerine), 59% PBS, 0.05% BSA
纯度	Protein A purified
克隆	单克隆
克隆编号	EPR3409

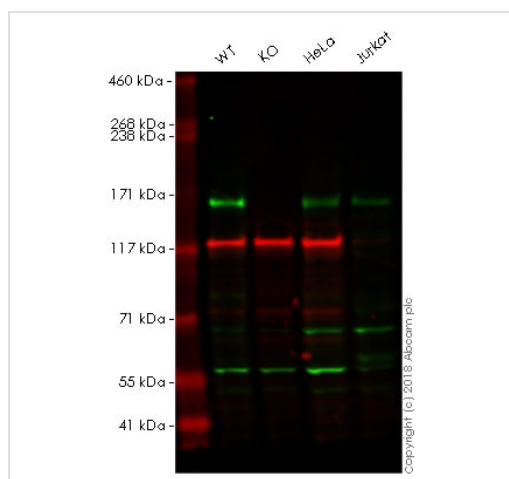
同种型	IgG	
应用		
<div>The Abpromise guarantee<div>Abpromise™承诺保证使用ab108620于以下的经测试应用</div></div> <div>“应用说明”部分 下显示的仅为推荐的起始稀释度;实际最佳的稀释度/浓度应由使用者检定。</div>		
应用	Ab评论	说明
Flow Cyt (Intra)		1/100. ab172730 - Rabbit monoclonal IgG, is suitable for use as an isotype control with this antibody.
ICC/IF		1/100.
WB	★ ★ ☆ ☆ ☆ (1)	1/5000 - 1/50000. Detects a band of approximately 160 kDa (predicted molecular weight: 169 kDa).
IHC-P		1/250 - 1/500. Perform heat mediated antigen retrieval with citrate buffer pH 6 before commencing with IHC staining protocol.
应用说明	Is unsuitable for IP.	
靶标		
功能	Microtubule plus-end tracking protein that promotes the stabilization of dynamic microtubules. Involved in the nucleation of noncentrosomal microtubules originating from the trans-Golgi network (TGN). Required for the polarization of the cytoplasmic microtubule arrays in migrating cells towards the leading edge of the cell. May act at the cell cortex to enhance the frequency of rescue of depolymerizing microtubules by attaching their plus-ends to cortical platforms composed of ERC1 and PHLDB2. This cortical microtubule stabilizing activity is regulated at least in part by phosphatidylinositol 3-kinase signaling. Also performs a similar stabilizing function at the kinetochore which is essential for the bipolar alignment of chromosomes on the mitotic spindle.	
序列相似性	Belongs to the CLASP family. Contains 7 HEAT repeats.	
翻译后修饰	Phosphorylated upon DNA damage, probably by ATM or ATR.	
细胞定位	Cytoplasm > cytoskeleton. Cytoplasm > cytoskeleton > centrosome. Chromosome > centromere > kinetochore. Cytoplasm > cytoskeleton > spindle. Golgi apparatus > trans-Golgi network. Localizes to microtubule plus ends. Localizes to centrosomes, kinetochores and the mitotic spindle from prometaphase. Subsequently localizes to the spindle midzone from anaphase and to the midbody from telophase. In migrating cells localizes to the plus ends of microtubules within the cell body and to the entire microtubule lattice within the lamella. Localizes to the cell cortex and this requires ERC1 and PHLDB2.	
图片		



Immunocytochemistry/ Immunofluorescence - Anti-CLASP1 antibody [EPR3409] (ab108620)

Immunocytochemistry/Immunofluorescence analysis of HeLa cells labelling CLASP1 (green) with ab108620 at 1/100. Cells were fixed with 4% paraformaldehyde and permeabilized with 0.1% Triton X-100. **ab150077**, an Alexa Fluor® 488-conjugated goat anti-rabbit IgG (1/500) was used as the secondary antibody. DAPI (blue) was used as the nuclear counterstain.

Control: primary antibody (1/100) and secondary antibody, **ab150120** Alexa Fluor® 594-conjugated goat anti-mouse IgG (1/500).



Western blot - Anti-CLASP1 antibody [EPR3409] (ab108620)

All lanes : Anti-CLASP1 antibody [EPR3409] (ab108620) at 1/10000 dilution

Lane 1 : Wild-type HAP1 whole cell lysate

Lane 2 : CLASP1 knockout HAP1 whole cell lysate

Lane 3 : HeLa whole cell lysate

Lane 4 : Jurkat whole cell lysate

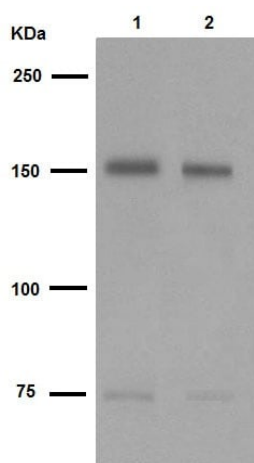
Lysates/proteins at 20 µg per lane.

Predicted band size: 169 kDa

Lanes 1 - 4: Merged signal (red and green). Green - ab108620 observed at 169 kDa. Red - loading control, **ab130007**, observed at 130 kDa.

ab108620 was shown to recognize CLASP1 in wild-type HAP1 cells as signal was lost at the expected MW in CLASP1 knockout cells. Additional cross-reactive bands were observed in the wild-type and knockout cells. Wild-type and CLASP1 knockout samples were subjected to SDS-PAGE. Ab108620 and **ab130007** (Mouse anti-Vinculin loading control) were incubated overnight at 4°C at 1/10000 dilution and 1/20000 dilution respectively. Blots were developed with Goat anti-Rabbit IgG H&L (IRDye® 800CW) preabsorbed **ab216773** and Goat anti-Mouse IgG H&L (IRDye® 680RD) preabsorbed **ab216776** secondary antibodies at 1/20000

dilution for 1 hour at room temperature before imaging.



Western blot - Anti-CLASP1 antibody [EPR3409]
(ab108620)

All lanes : Anti-CLASP1 antibody [EPR3409] (ab108620) at 1/20000 dilution (purified)

Lane 1 : U87-MG cell lysate

Lane 2 : HeLa cell lysate

Lysates/proteins at 10 µg per lane.

Secondary

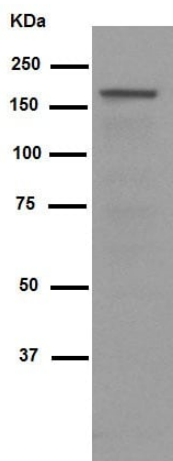
All lanes : Peroxidase-conjugated goat anti-rabbit IgG (H+L) at 1/1000 dilution

Predicted band size: 169 kDa

Observed band size: 160 kDa

Blocking buffer and concentration: 5% NFDM/TBST.

Diluting buffer and concentration: 5% NFDM /TBST.



Western blot - Anti-CLASP1 antibody [EPR3409]
(ab108620)

Anti-CLASP1 antibody [EPR3409] (ab108620) at 1/50000 dilution (purified) + Rat brain tissue lysate at 10 µg

Secondary

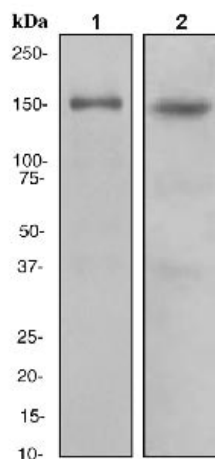
Peroxidase-conjugated goat anti-rabbit IgG (H+L) at 1/1000 dilution

Predicted band size: 169 kDa

Observed band size: 160 kDa

Blocking buffer and concentration: 5% NFDM/TBST.

Diluting buffer and concentration: 5% NFDM /TBST.



Western blot - Anti-CLASP1 antibody [EPR3409]
(ab108620)

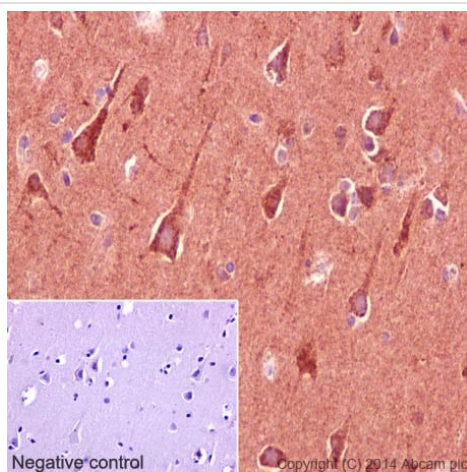
All lanes : Anti-CLASP1 antibody [EPR3409] (ab108620) at
1/10000 dilution (unpurified)

Lane 1 : T47-D cell lysate

Lane 2 : C6 cell lysate

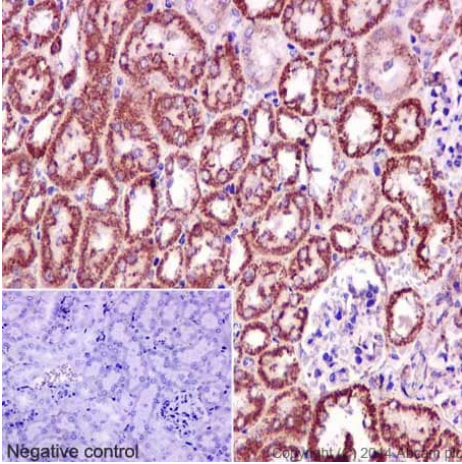
Lysates/proteins at 10 µg per lane.

Predicted band size: 169 kDa



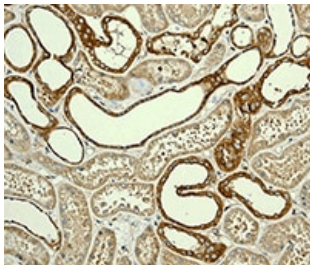
Immunohistochemistry (Formalin/PFA-fixed paraffin-
embedded sections) - Anti-CLASP1 antibody
[EPR3409] (ab108620)

Immunohistochemistry (Formalin/PFA-fixed paraffin-embedded sections) analysis of human cerebral cortex tissue labelling CLASP1 with purified ab108620 at 1/250. Heat mediated antigen retrieval was performed using Tris/EDTA buffer pH 9. [ab97051](#), a HRP-conjugated goat anti-rabbit IgG (H+L) was used as the secondary antibody (1/500). Negative control using PBS instead of primary antibody. Counterstained with hematoxylin.



Immunohistochemistry (Formalin/PFA-fixed paraffin-embedded sections) - Anti-CLASP1 antibody
[EPR3409] (ab108620)

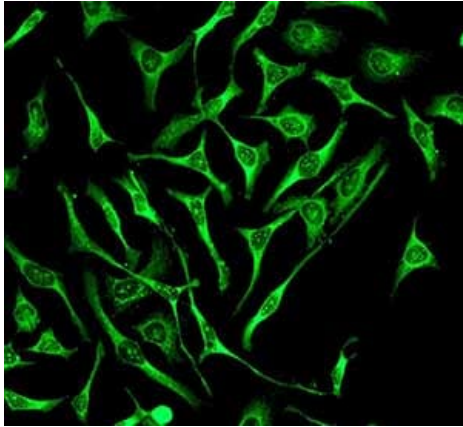
Immunohistochemistry (Formalin/PFA-fixed paraffin-embedded sections) analysis of mouse kidney tissue labeling CLASP1 with purified ab108620 at 1/250. Heat mediated antigen retrieval was performed using Tris/EDTA buffer pH 9. **ab97051**, a HRP-conjugated goat anti-rabbit IgG (H+L) was used as the secondary antibody (1/500). Negative control using PBS instead of primary antibody. Counterstained with hematoxylin.



Immunohistochemistry (Formalin/PFA-fixed paraffin-embedded sections) - Anti-CLASP1 antibody
[EPR3409] (ab108620)

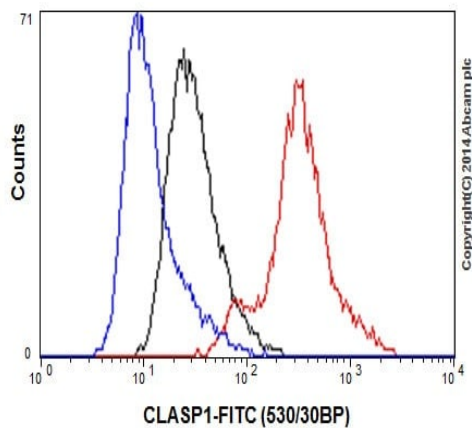
Immunohistochemistry (Formalin/PFA-fixed paraffin-embedded sections) analysis of human kidney tissue labelling CLASP1 with unpurified ab108620 at 1/250.

Perform heat mediated antigen retrieval with citrate buffer pH 6 before commencing with IHC staining protocol.



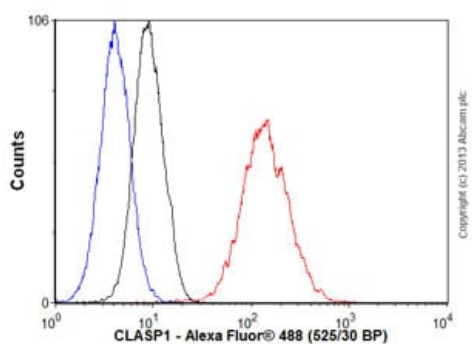
Immunocytochemistry/ Immunofluorescence - Anti-CLASP1 antibody [EPR3409] (ab108620)

Immunocytochemistry/Immunofluorescence analysis of HeLa cells labelling CLASP1 with unpurified ab108620 at 1/100.



Flow Cytometry (Intracellular) - Anti-CLASP1 antibody [EPR3409] (ab108620)





Intracellular Flow Cytometry analysis of HeLa cells labelling CLASP1 with purified ab108620 at 1/50 (red). Cells were fixed with 80% methanol. A FITC-conjugated goat anti-rabbit IgG (1/150) was used as the secondary antibody. Black - Isotype control, rabbit monoclonal IgG. Blue - Unlabelled control, cells without incubation with primary and secondary antibodies.



Flow Cytometry (Intracellular) - Anti-CLASP1 antibody [EPR3409] (ab108620)

Overlay histogram showing HeLa cells stained with unpurified ab108620 (red line). The cells were fixed with 80% methanol (5 min) and then permeabilized with 0.1% PBS-Tween for 20 min. The cells were then incubated in 1x PBS / 10% normal goat serum / 0.3M glycine to block non-specific protein-protein interactions followed by the antibody (ab108620, 1/1000 dilution) for 30 min at 22°C. The secondary antibody used was Alexa Fluor® 488 goat anti-rabbit IgG (H&L) (**ab150077**) at 1/2000 dilution for 30 min at 22°C. Isotype control antibody (black line) was rabbit IgG (monoclonal) (0.1µg/1x10⁶ cells) used under the same conditions. Unlabelled sample (blue line) was also used as a control. Acquisition of >5,000 events were collected using a 20mW Argon ion laser (488nm) and 525/30 bandpass filter.

Why choose a recombinant antibody?

 <p>Research with confidence Consistent and reproducible results</p>	 <p>Long-term and scalable supply Recombinant technology</p>
 <p>Success from the first experiment Confirmed specificity</p>	 <p>Ethical standards compliant Animal-free production</p>

Anti-CLASP1 antibody [EPR3409] (ab108620)

Please note: All products are "FOR RESEARCH USE ONLY. NOT FOR USE IN DIAGNOSTIC PROCEDURES"

Our Abpromise to you: Quality guaranteed and expert technical support

- Replacement or refund for products not performing as stated on the datasheet
- Valid for 12 months from date of delivery
- Response to your inquiry within 24 hours
- We provide support in Chinese, English, French, German, Japanese and Spanish
- Extensive multi-media technical resources to help you
- We investigate all quality concerns to ensure our products perform to the highest standards

If the product does not perform as described on this datasheet, we will offer a refund or replacement. For full details of the Abpromise, please visit <https://www.abcam.cn/abpromise> or contact our technical team.

Terms and conditions

- Guarantee only valid for products bought direct from Abcam or one of our authorized distributors