

### Anti-Chromogranin A antibody [EP1030Y] ab68271

**重组** RabMAb

★★★★☆ **2 Abreviews** **11 References** **5 图像**

#### 概述

产品名称	Anti-Chromogranin A抗体[EP1030Y]
描述	兔单克隆抗体[EP1030Y] to Chromogranin A
宿主	Rabbit
经测试应用	<b>适用于:</b> ICC/IF, WB, IHC-P, Flow Cyt (Intra) <b>不适用于:</b> IP
种属反应性	<b>与反应:</b> Human
免疫原	Synthetic peptide. This information is proprietary to Abcam and/or its suppliers.
阳性对照	WB: SH-SY5Y cell lysate. IHC-P: Human pancreas tissue. ICC/IF: SH-SY5Y. Flow Cyt (intra): SH-SY5Y cells
常规说明	<p>This product is a recombinant monoclonal antibody, which offers several advantages including:</p> <ul style="list-style-type: none"> <li>- High batch-to-batch consistency and reproducibility</li> <li>- Improved sensitivity and specificity</li> <li>- Long-term security of supply</li> <li>- Animal-free production</li> </ul> <p>For more information <a href="#">see here</a>.</p> <p>Our RabMAb<sup>®</sup> technology is a patented hybridoma-based technology for making rabbit monoclonal antibodies. For details on our patents, please refer to <a href="#">RabMAb<sup>®</sup> patents</a>.</p> <p>Mouse, Rat: We have preliminary internal testing data to indicate this antibody may not react with these species. Please contact us for more information.</p>

#### 性能

形式	Liquid
存放说明	Shipped at 4°C. Store at +4°C short term (1-2 weeks). Upon delivery aliquot. Store at -20°C. Avoid freeze / thaw cycle.
存储溶液	pH: 7.2 Preservative: 0.01% Sodium azide Constituents: 9% PBS, 40% Glycerol (glycerin, glycerine), 0.05% BSA, 50% Tissue culture supernatant
纯度	Protein A purified

克隆	单克隆
克隆编号	EP1030Y
同种型	IgG

## 应用

## The Abpromise guarantee Abpromise™承诺保证使用ab68271于以下的经测试应用

**“应用说明”部分 下显示的仅为推荐的起始稀释度;实际最佳的稀释度/浓度应由使用者检定。**

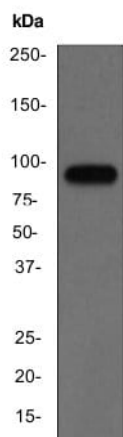
应用	Ab评论	说明
ICC/IF		1/100 - 1/250.
WB		1/10000 - 1/50000. Detects a band of approximately 90 kDa (predicted molecular weight: 51 kDa).
IHC-P	★★★★☆ (2)	1/100 - 1/250. Perform heat mediated antigen retrieval with citrate buffer pH 6 before commencing with IHC staining protocol.
Flow Cyt (Intra)		1/200. <b>ab172730</b> - Rabbit monoclonal IgG, is suitable for use as an isotype control with this antibody.

应用说明 Is unsuitable for IP.

## 靶标

功能	Pancreastatin strongly inhibits glucose induced insulin release from the pancreas.
序列相似性	Belongs to the chromogranin/secretogranin protein family.
翻译后修饰	Sulfated on tyrosine residues and/or contains sulfated glycans. O-glycosylated with core 1 or possibly core 8 glycans.
细胞定位	Secreted. Neuroendocrine and endocrine secretory granules.
形式	According to the Swiss-Prot database, this protein has many different forms which correspond to various molecular weights; thus the possible variation from the predicted molecular weight of 51kDa.

图片



Western blot - Anti-Chromogranin A antibody  
[EP1030Y] (ab68271)

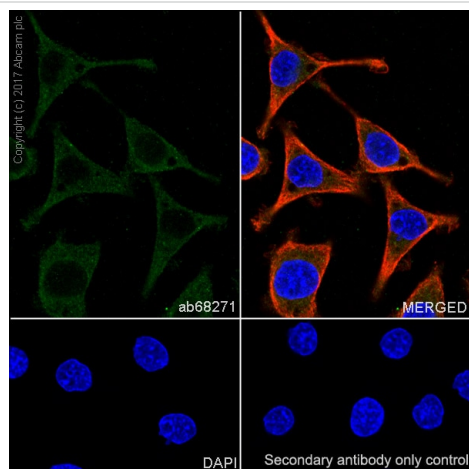
Anti-Chromogranin A antibody [EP1030Y] (ab68271) + SH-SY5Y  
(Human neuroblastoma cell line from bone marrow) cell lysate at 10  
µg

### Secondary

HRP conjugated Goat anti-rabbit at 1/2000 dilution

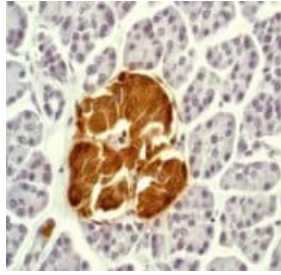
**Predicted band size:** 51 kDa

**Observed band size:** 90 kDa



Immunocytochemistry/ Immunofluorescence - Anti-  
Chromogranin A antibody [EP1030Y] (ab68271)

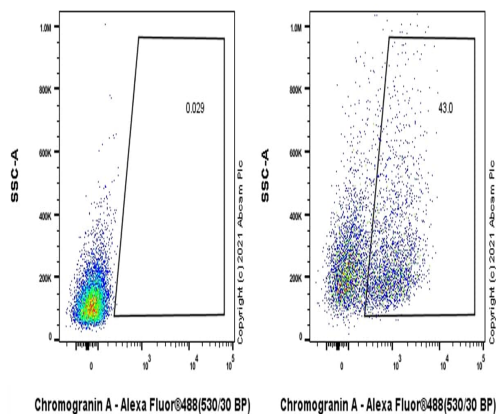
Immunocytochemistry analysis of SH-SY5Y (human neuroblastoma epithelial cell) labeling Chromogranin A with purified ab68271 at 1/50 dilution (3 µg/ml). Cells were fixed with 4% Paraformaldehyde and permeabilised with 0.1% tritonX-100. Goat anti rabbit IgG (Alexa Fluor® 488, [ab150077](#)) at 1/1000 (2 µg/ml) was used as the secondary antibody. [ab195889](#) Anti-alpha Tubulin antibody [DM1A] - Microtubule Marker (Alexa Fluor® 594) 1/200 (2.17 µg/ml) was used as counterstain. Nuclei were stained blue with DAPI. Negative control: PBS instead of the primary antibody.



Immunohistochemistry (Formalin/PFA-fixed paraffin-embedded sections) - Anti-Chromogranin A antibody [EP1030Y] (ab68271)

Formalin/PFA-fixed paraffin-embedded human pancreas tissue stained for Chromogranin A with ab68271 at a 1/100 dilution in immunohistochemical analysis.

Perform heat mediated antigen retrieval with citrate buffer pH 6 before commencing with IHC staining protocol.



Flow Cytometry (Intracellular) - Anti-Chromogranin A antibody [EP1030Y] (ab68271)

Flow Cytometry analysis of Jurkat (Human T cell leukemia T lymphocyte, Left) / SH-SY5Y (Human neuroblastoma epithelial cell, Right) cells labeling Chromogranin A with purified ab68271 at 1/200 dilution (1 µg/mL) (Red). Cells were fixed with 4% Paraformaldehyde and permeabilised with 90% Methanol. A Goat anti rabbit IgG (Alexa Fluor® 488, **ab150077**) secondary antibody was used at 1/2000. Isotype control - Rabbit monoclonal IgG (Left). Negative control: Jurkat.

### Why choose a recombinant antibody?



**Research with confidence**  
Consistent and reproducible results



**Long-term and scalable supply**  
Recombinant technology



**Success from the first experiment**  
Confirmed specificity



**Ethical standards compliant**  
Animal-free production

Anti-Chromogranin A antibody [EP1030Y] (ab68271)

**Please note:** All products are "FOR RESEARCH USE ONLY. NOT FOR USE IN DIAGNOSTIC PROCEDURES"

**Our Abpromise to you: Quality guaranteed and expert technical support**

- Replacement or refund for products not performing as stated on the datasheet
- Valid for 12 months from date of delivery
- Response to your inquiry within 24 hours
- We provide support in Chinese, English, French, German, Japanese and Spanish
- Extensive multi-media technical resources to help you
- We investigate all quality concerns to ensure our products perform to the highest standards

If the product does not perform as described on this datasheet, we will offer a refund or replacement. For full details of the Abpromise, please visit <https://www.abcam.cn/abpromise> or contact our technical team.

#### **Terms and conditions**

---

- Guarantee only valid for products bought direct from Abcam or one of our authorized distributors