

# Anti-CHREBP antibody ab92809

[1 Abreviews](#) [10 References](#) [4 图像](#)

### 概述

产品名称	Anti-CHREBP抗体
描述	兔多克隆抗体to CHREBP
宿主	Rabbit
经测试应用	适用于: IHC-P, WB, ICC/IF
种属反应性	与反应: Mouse, Human
免疫原	Synthetic peptide corresponding to Human CHREBP aa 800-900 (C terminal).
常规说明	<p>The Life Science industry has been in the grips of a reproducibility crisis for a number of years. Abcam is leading the way in addressing this with our range of recombinant monoclonal antibodies and knockout edited cell lines for gold-standard validation. Please check that this product meets your needs before purchasing.</p> <p>If you have any questions, special requirements or concerns, please send us an inquiry and/or contact our Support team ahead of purchase. Recommended alternatives for this product can be found below, along with publications, customer reviews and Q&amp;As</p>

### 性能

形式	Liquid
存放说明	Shipped at 4°C. Store at +4°C short term (1-2 weeks). Upon delivery aliquot. Store at -20°C or -80°C. Avoid freeze / thaw cycle.
存储溶液	pH: 7.40 Preservative: 0.01% Sodium azide Constituent: Tris citrate/phosphate
纯度	Immunogen affinity purified
克隆	多克隆
同种型	IgG

### 应用

**The Abpromise guarantee** **Abpromise™** 承诺保证使用ab92809于以下的经测试应用

“应用说明”部分 下显示的仅为推荐的起始稀释度;实际最佳的稀释度/浓度应由使用者检定。

应用	Ab评论	说明
IHC-P		Use at an assay dependent concentration.
WB		Use at an assay dependent concentration. Predicted molecular weight: 95 kDa.
ICC/IF		1/100 - 1/500.

## 靶标

### 功能

Transcriptional repressor. Binds to the canonical and non-canonical E box sequences 5'-CACGTG-3'.

### 组织特异性

Expressed in liver, heart, kidney, cerebellum and intestinal tissues.

### 疾病相关

Note=WBSR14 is located in the Williams-Beuren syndrome (WBS) critical region. WBS results from a hemizygous deletion of several genes on chromosome 7q11.23, thought to arise as a consequence of unequal crossing over between highly homologous low-copy repeat sequences flanking the deleted region. Haploinsufficiency of WBSR14 may be the cause of certain cardiovascular and musculo-skeletal abnormalities observed in the disease.

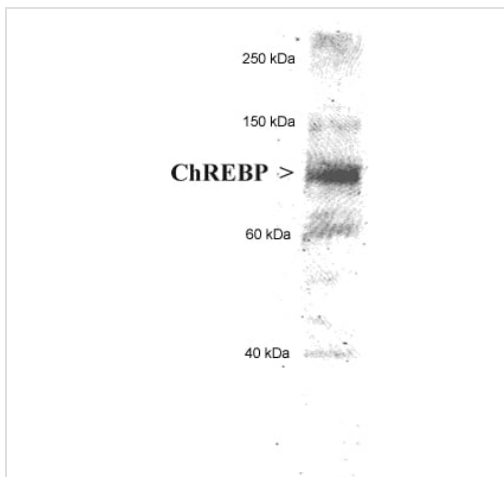
### 序列相似性

Contains 1 basic helix-loop-helix (bHLH) domain.

### 细胞定位

Nucleus.

## 图片

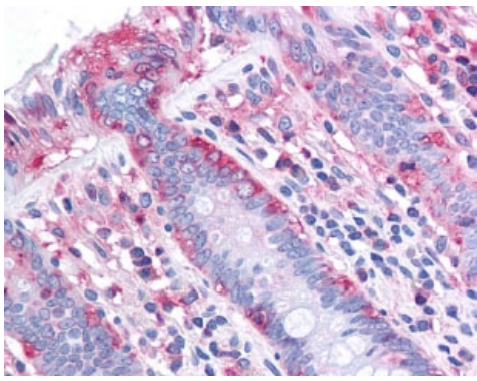


Anti-CHREBP antibody (ab92809) (anti CHREBP) + human hepatocyte lysate at 20 µg

**Predicted band size:** 95 kDa

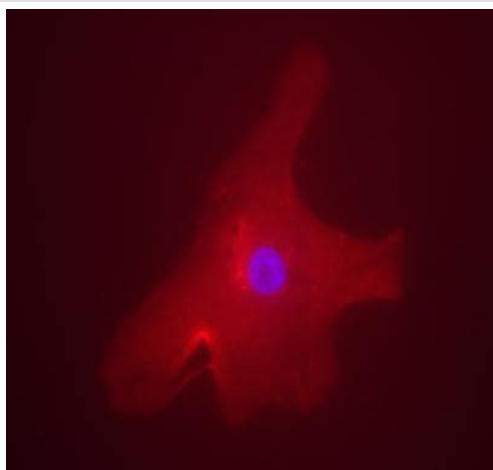
5-10 second film exposure

Western blot - Anti-CHREBP antibody (ab92809)



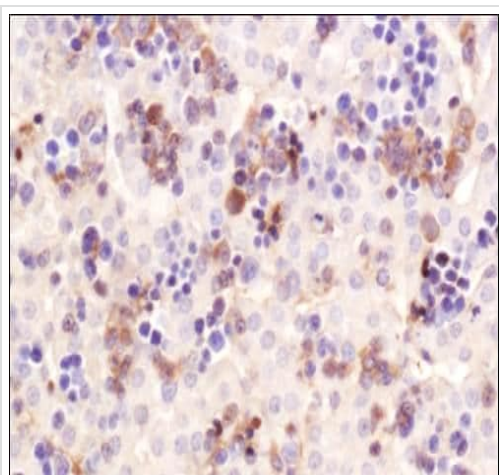
anti CHREBP staining CHREBP in human colon epithelium (40X)  
by immunohistochemistry.

Immunohistochemistry (Formalin/PFA-fixed paraffin-  
embedded sections) - Anti-CHREBP antibody  
(ab92809)



anti CHREBP staining CHREBP in human hepatocyte by  
Immunofluorescence. Overlay staining of ChREBP (rhodamine red)  
and DAPI nuclear staining (blue).

Immunocytochemistry/ Immunofluorescence - Anti-  
CHREBP antibody (ab92809)



Immunohistochemistry analysis of mouse liver labeling CHREBP with ab92809. DAB with hematoxylin counterstain.

Immunohistochemistry (Formalin/PFA-fixed paraffin-embedded sections) - Anti-CHREBP antibody (ab92809)

**Please note:** All products are "FOR RESEARCH USE ONLY. NOT FOR USE IN DIAGNOSTIC PROCEDURES"

### **Our Abpromise to you: Quality guaranteed and expert technical support**

---

- Replacement or refund for products not performing as stated on the datasheet
- Valid for 12 months from date of delivery
- Response to your inquiry within 24 hours
- We provide support in Chinese, English, French, German, Japanese and Spanish
- Extensive multi-media technical resources to help you
- We investigate all quality concerns to ensure our products perform to the highest standards

If the product does not perform as described on this datasheet, we will offer a refund or replacement. For full details of the Abpromise, please visit <https://www.abcam.cn/abpromise> or contact our technical team.

### **Terms and conditions**

---

- Guarantee only valid for products bought direct from Abcam or one of our authorized distributors