

Anti-CHMP1a antibody [EPR11938(B)] ab167412

重组 RabMAb

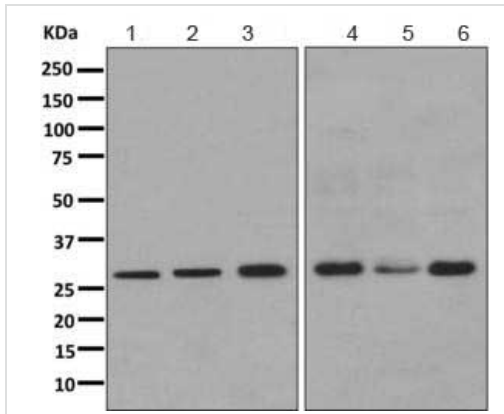
1 References **3 图像**

概述

产品名称	Anti-CHMP1a抗体[EPR11938(B)]
描述	兔单克隆抗体[EPR11938(B)] to CHMP1a
宿主	Rabbit
经测试应用	适用于: WB, ICC/IF 不适用于: Flow Cyt, IHC-P or IP
种属反应性	与反应: Mouse, Rat, Human
免疫原	Synthetic peptide. This information is proprietary to Abcam and/or its suppliers.
阳性对照	293T, HeLa, LNCaP, C6, RAW264.7 and PC12 cell lysates; HeLa cells.
常规说明	This product is a recombinant monoclonal antibody, which offers several advantages including: <ul style="list-style-type: none"> - High batch-to-batch consistency and reproducibility - Improved sensitivity and specificity - Long-term security of supply - Animal-free production For more information see here . Our RabMAb [®] technology is a patented hybridoma-based technology for making rabbit monoclonal antibodies. For details on our patents, please refer to RabMAb[®] patents .

性能

形式	Liquid
存放说明	Shipped at 4°C. Store at +4°C short term (1-2 weeks). Upon delivery aliquot. Store at -20°C long term.
存储溶液	pH: 7.2 Preservative: 0.01% Sodium azide Constituents: 59% PBS, 40% Glycerol (glycerin, glycerine), 0.5% BSA
纯度	Protein A purified
克隆	单克隆
克隆编号	EPR11938(B)
同种型	IgG



Western blot - Anti-CHMP1a antibody
[EPR11938(B)] (ab167412)

All lanes : Anti-CHMP1a antibody [EPR11938(B)] (ab167412) at 1/1000 dilution

Lane 1 : 293T cell lysate

Lane 2 : HeLa cell lysate

Lane 3 : LNCaP cell lysate

Lane 4 : C6 cell lysate

Lane 5 : RAW264.7 cell lysate

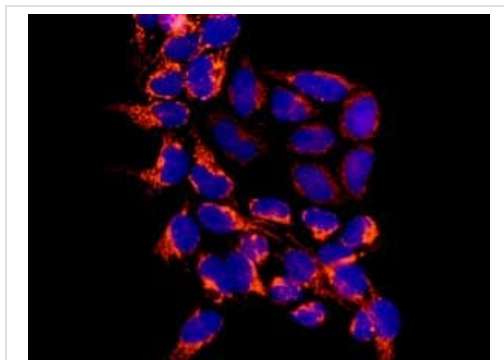
Lane 6 : PC12 cell lysate

Lysates/proteins at 10 µg per lane.

Secondary

All lanes : Goat anti-rabbit HRP conjugated antibody at 1/2000 dilution

Predicted band size: 22 kDa



Immunocytochemistry/ Immunofluorescence - Anti-
CHMP1a antibody [EPR11938(B)] (ab167412)

Immunofluorescent analysis of HeLa cells labeling CHMP1a with ab167412 at 1/250 dilution. DAPI nuclear staining is shown in blue.

Why choose a recombinant antibody?



Research with confidence
Consistent and reproducible results



Long-term and scalable supply
Recombinant technology



Success from the first experiment
Confirmed specificity



Ethical standards compliant
Animal-free production

Anti-CHMP1a antibody [EPR11938(B)] (ab167412)

Please note: All products are "FOR RESEARCH USE ONLY. NOT FOR USE IN DIAGNOSTIC PROCEDURES"

Our Abpromise to you: Quality guaranteed and expert technical support

- Replacement or refund for products not performing as stated on the datasheet
- Valid for 12 months from date of delivery
- Response to your inquiry within 24 hours
- We provide support in Chinese, English, French, German, Japanese and Spanish
- Extensive multi-media technical resources to help you
- We investigate all quality concerns to ensure our products perform to the highest standards

If the product does not perform as described on this datasheet, we will offer a refund or replacement. For full details of the Abpromise, please visit <https://www.abcam.cn/abpromise> or contact our technical team.

Terms and conditions

- Guarantee only valid for products bought direct from Abcam or one of our authorized distributors