


Anti-CHM antibody [EPR7142] - BSA and Azide free ab248756

重组 RabMAb

3 图像

概述

产品名称	Anti-CHM抗体[EPR7142] - BSA and Azide free
描述	兔单克隆抗体[EPR7142] to CHM - BSA and Azide free
宿主	Rabbit
经测试应用	适用于: ICC/IF, WB 不适用于: IHC-P or IP
种属反应性	与反应: Human 预测可用于: Mouse, Rat 
免疫原	Synthetic peptide. This information is proprietary to Abcam and/or its suppliers.
常规说明	<p>ab248756 is the carrier-free version of ab134964.</p> <p>Our carrier-free antibodies are typically supplied in a PBS-only formulation, purified and free of BSA, sodium azide and glycerol. The carrier-free buffer and high concentration allow for increased conjugation efficiency.</p> <p>This conjugation-ready format is designed for use with fluorochromes, metal isotopes, oligonucleotides, and enzymes, which makes them ideal for antibody labelling, functional and cell-based assays, flow-based assays (e.g. mass cytometry) and Multiplex Imaging applications.</p> <p>Use our conjugation kits for antibody conjugates that are ready-to-use in as little as 20 minutes with <1 minute hands-on-time and 100% antibody recovery: available for fluorescent dyes, HRP, biotin and gold.</p> <p>This product is compatible with the Maxpar[®] Antibody Labeling Kit from Fluidigm, without the need for antibody preparation. Maxpar[®] is a trademark of Fluidigm Canada Inc.</p> <p>This product is a recombinant monoclonal antibody, which offers several advantages including:</p> <ul style="list-style-type: none">- High batch-to-batch consistency and reproducibility- Improved sensitivity and specificity- Long-term security of supply- Animal-free production <p>For more information see here.</p> <p>Our RabMAb[®] technology is a patented hybridoma-based technology for making rabbit monoclonal antibodies. For details on our patents, please refer to RabMAb[®] patents.</p>

性能

形式	Liquid
存放说明	Shipped at 4°C. Store at +4°C. Do Not Freeze.
存储溶液	pH: 7.2 Constituent: PBS
无载体	是
纯度	Affinity purified
克隆	单克隆
克隆编号	EPR7142
同种型	IgG

应用

The Abpromise guarantee **Abpromise™**承诺保证使用ab248756于以下的经测试应用

“应用说明”部分 下显示的仅为推荐的起始稀释度;实际最佳的稀释度/浓度应由使用者检定。

应用	Ab评论	说明
ICC/IF		Use at an assay dependent concentration.
WB		Use at an assay dependent concentration. Detects a band of approximately 95 kDa (predicted molecular weight: 73 kDa).

应用说明 Is unsuitable for IHC-P or IP.

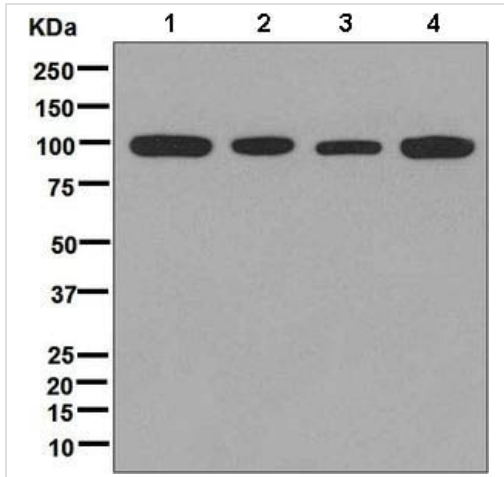
靶标

功能 Binds unprenylated Rab proteins, presents it to the catalytic Rab GGTase dimer, and remains bound to it after the geranylgeranyl transfer reaction. The component A is thought to be regenerated by transferring its prenylated Rab back to the donor membrane. Also a pre-formed complex consisting of CHM and the Rab GGTase dimer (RGGT or component B) can bind to and prenylate Rab proteins; this alternative pathway is proposed to be the predominant pathway for Rab protein geranylgeranylation.

疾病相关 Defects in CHM are the cause of choroideremia (CHM) [MIM:303100]. An X-linked recessive disease characterized by a slowly progressive degeneration of the choroid, photoreceptors, and retinal pigment epithelium. Affected males develop night blindness in their teenage years followed by loss of peripheral vision and complete blindness at middle age. Carrier females are generally asymptomatic but funduscopic examination often shows patchy areas of chorioretinal atrophy.

序列相似性 Belongs to the Rab GDI family.

图片



Western blot - Anti-CHM antibody [EPR7142] - BSA and Azide free (ab248756)

All lanes : Anti-CHM antibody [EPR7142] ([ab134964](#)) at 1/1000 dilution

Lane 1 : HeLa cell lysate

Lane 2 : Y79 cell lysate

Lane 3 : A431 cell lysate

Lane 4 : 293T cell lysate

Lysates/proteins at 10 µg per lane.

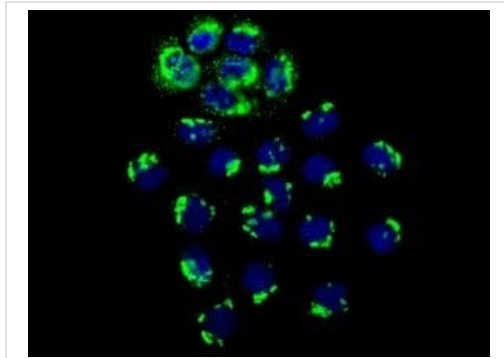
Secondary

All lanes : HRP labelled goat anti-rabbit at 1/2000 dilution

Predicted band size: 73 kDa

Observed band size: 95 kDa

This data was developed using [ab134964](#), the same antibody clone in a different buffer formulation.



Immunocytochemistry/ Immunofluorescence - Anti-CHM antibody [EPR7142] - BSA and Azide free (ab248756)

This data was developed using [ab134964](#), the same antibody clone in a different buffer formulation. Immunofluorescence analysis of CHM in A431 cells, using [ab134964](#) at a dilution of 1/250.

Why choose a recombinant antibody?



Research with confidence
Consistent and reproducible results



Long-term and scalable supply
Recombinant technology



Success from the first experiment
Confirmed specificity



Ethical standards compliant
Animal-free production

Anti-CHM antibody [EPR7142] - BSA and Azide free
(ab248756)

Please note: All products are "FOR RESEARCH USE ONLY. NOT FOR USE IN DIAGNOSTIC PROCEDURES"

Our Abpromise to you: Quality guaranteed and expert technical support

- Replacement or refund for products not performing as stated on the datasheet
- Valid for 12 months from date of delivery
- Response to your inquiry within 24 hours
- We provide support in Chinese, English, French, German, Japanese and Spanish
- Extensive multi-media technical resources to help you
- We investigate all quality concerns to ensure our products perform to the highest standards

If the product does not perform as described on this datasheet, we will offer a refund or replacement. For full details of the Abpromise, please visit <https://www.abcam.cn/abpromise> or contact our technical team.

Terms and conditions

- Guarantee only valid for products bought direct from Abcam or one of our authorized distributors