


# Anti-Chk2 (phospho T68) antibody ab85743

★★★★★ [2 Abreviews](#) [9 References](#) [3 图像](#)

### 概述

产品名称	Anti-Chk2 (phospho T68)抗体
描述	兔多克隆抗体to Chk2 (phospho T68)
宿主	Rabbit
经测试应用	适用于: ICC/IF, IHC-P, WB
种属反应性	与反应: Human 预测可用于: Mouse, Rat, Cow, Pig 
免疫原	Synthetic peptide. This information is proprietary to Abcam and/or its suppliers.
阳性对照	This antibody produced a positive signal in Irradiated HeLa. It also gave a positive result in FFPE human colon adenocarcinoma tissue sections.
常规说明	<p>The Life Science industry has been in the grips of a reproducibility crisis for a number of years. Abcam is leading the way in addressing this with our range of recombinant monoclonal antibodies and knockout edited cell lines for gold-standard validation. Please check that this product meets your needs before purchasing.</p> <p>If you have any questions, special requirements or concerns, please send us an inquiry and/or contact our Support team ahead of purchase. Recommended alternatives for this product can be found below, along with publications, customer reviews and Q&amp;As</p>

### 性能

形式	Liquid
存放说明	Shipped at 4°C. Store at +4°C short term (1-2 weeks). Upon delivery aliquot. Store at -20°C or -80°C. Avoid freeze / thaw cycle.
存储溶液	pH: 7.40 Preservative: 0.02% Sodium azide Constituents: PBS, 1% BSA  Batches of this product that have a concentration < 1mg/ml may have BSA added as a stabilising agent. If you would like information about the formulation of a specific lot, please contact our scientific support team who will be happy to help.
纯度	Immunogen affinity purified
克隆	多克隆

同种型

IgG

## 应用

**The Abpromise guarantee** **Abpromise™**承诺保证使用ab85743于以下的经测试应用

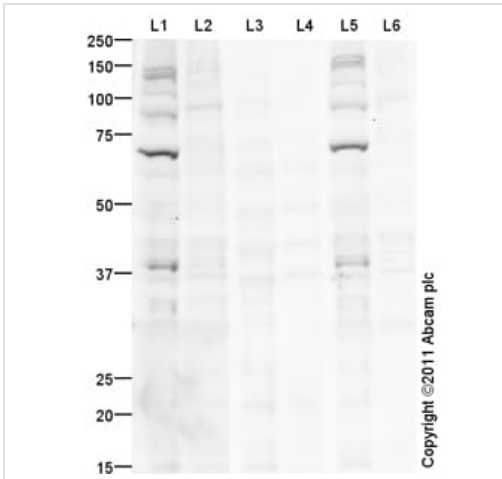
“应用说明”部分 下显示的仅为推荐的起始稀释度;实际最佳的稀释度/浓度应由使用者检定。

应用	Ab评论	说明
ICC/IF		Use a concentration of 5 µg/ml.
IHC-P	★★★★★ (1)	Use a concentration of 5 µg/ml. Perform heat mediated antigen retrieval before commencing with IHC staining protocol.
WB	★★★★★ (1)	Use a concentration of 1 µg/ml. Detects a band of approximately 70 kDa (predicted molecular weight: 61 kDa).

## 靶标

功能	Regulates cell cycle checkpoints and apoptosis in response to DNA damage, particularly to DNA double-strand breaks. Inhibits CDC25C phosphatase by phosphorylation on 'Ser-216', preventing the entry into mitosis. May also play a role in meiosis. Regulates the TP53 tumor suppressor through phosphorylation at 'Thr-18' and 'Ser-20'.
组织特异性	High expression is found in testis, spleen, colon and peripheral blood leukocytes. Low expression is found in other tissues.
疾病相关	Defects in CHEK2 are associated with Li-Fraumeni syndrome 2 (LFS2) [MIM:609265]; a highly penetrant familial cancer phenotype usually associated with inherited mutations in p53/TP53. Defects in CHEK2 may be a cause of susceptibility to prostate cancer (PC) [MIM:176807]. It is a malignancy originating in tissues of the prostate. Most prostate cancers are adenocarcinomas that develop in the acini of the prostatic ducts. Other rare histopathologic types of prostate cancer that occur in approximately 5% of patients include small cell carcinoma, mucinous carcinoma, prostatic ductal carcinoma, transitional cell carcinoma, squamous cell carcinoma, basal cell carcinoma, adenoid cystic carcinoma (basaloid), signet-ring cell carcinoma and neuroendocrine carcinoma. Defects in CHEK2 are found in some patients with osteogenic sarcoma (OSRC) [MIM:259500].
序列相似性	Belongs to the protein kinase superfamily. CAMK Ser/Thr protein kinase family. CHK2 subfamily. Contains 1 FHA domain. Contains 1 protein kinase domain.
翻译后修饰	Phosphorylated by PLK4.
细胞定位	Nucleus; Nucleus. Isoform 10 is present throughout the cell and Nucleus > PML body. Nucleus > nucleoplasm. Recruited into PML bodies together with TP53.

## 图片



Western blot - Anti-Chk2 (phospho T68) antibody (ab85743)

**All lanes :** Anti-Chk2 (phospho T68) antibody (ab85743) at 1 µg/ml

**Lane 1 :** HeLa Whole Cell Lysate - Irradiated (5Gy)

**Lane 2 :** HeLa (Human epithelial carcinoma cell line) Whole Cell Lysate

**Lane 3 :** HeLa Whole Cell Lysate - Irradiated (5Gy) with Human Chk2 (phospho T68) peptide (**ab111650**) at 1 µg/ml

**Lane 4 :** HeLa (Human epithelial carcinoma cell line) Whole Cell Lysate with Human Chk2 (phospho T68) peptide (**ab111650**) at 1 µg/ml

**Lane 5 :** HeLa Whole Cell Lysate - Irradiated (5Gy) with Human Chk2 peptide (**ab118179**) at 1 µg/ml

**Lane 6 :** HeLa (Human epithelial carcinoma cell line) Whole Cell Lysate with Human Chk2 peptide (**ab118179**) at 1 µg/ml

Lysates/proteins at 10 µg per lane.

#### Secondary

**All lanes :** Goat Anti-Rabbit IgG H&L (HRP) preadsorbed (**ab97080**) at 1/5000 dilution

Developed using the ECL technique.

Performed under reducing conditions.

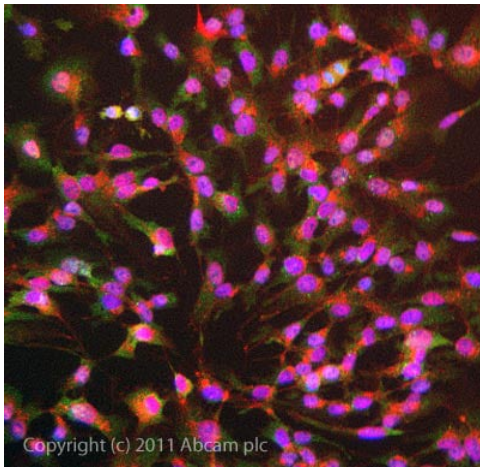
**Predicted band size:** 61 kDa

**Observed band size:** 70 kDa

**Additional bands at:** 145 kDa, 38 kDa. We are unsure as to the identity of these extra bands.

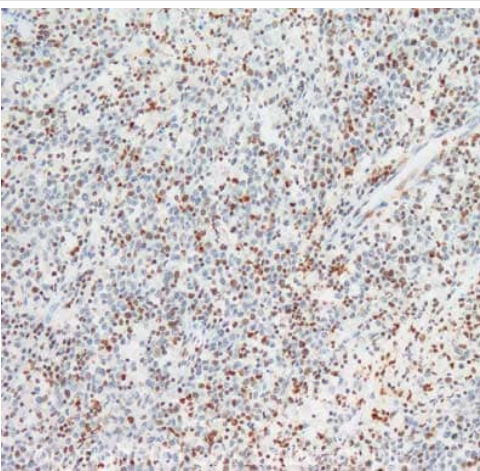
**Exposure time:** 3 minutes

Secondary antibody - **anti-rabbit HRP** (IgG H&L; **ab97080**)



Immunocytochemistry/ Immunofluorescence - Anti-Chk2 (phospho T68) antibody (ab85743)

ICC/IF image of ab85743 stained HepG2 cells. The cells were 4% formaldehyde fixed (10 min) and then incubated in 1%BSA / 10% normal goat serum / 0.3M glycine in 0.1% PBS-Tween for 1h to permeabilise the cells and block non-specific protein-protein interactions. The cells were then incubated with the antibody ab85743 at 5µg/ml overnight at +4°C. The secondary antibody (green) was goat **anti rabbit DyLight® 488 (ab96899)** IgG (H+L) used at a 1/1000 dilution for 1h. Alexa Fluor® 594 WGA was used to label plasma membranes (red) at a 1/200 dilution for 1h. DAPI was used to stain the cell nuclei (blue) at a concentration of 1.43µM. This antibody also gave a positive result in formaldehyde fixed (4%, 10min) HeLa cells at 5ug/ml.



Immunohistochemistry (Formalin/PFA-fixed paraffin-embedded sections) - Anti-Chk2 (phospho T68) antibody (ab85743)

IHC image of Chk2 staining in human colon adenocarcinoma formalin fixed paraffin embedded tissue section, performed on a Leica Bond™ system using the standard protocol F. The section was pre-treated using heat mediated antigen retrieval with sodium citrate buffer (pH6, epitope retrieval solution 1) for 20 mins. The section was then incubated with ab85743, 5µg/ml, for 15 mins at room temperature and detected using an HRP conjugated compact polymer system. DAB was used as the chromogen. The section was then counterstained with haematoxylin and mounted with DPX.

For other IHC staining systems (automated and non-automated) customers should optimize variable parameters such as antigen retrieval conditions, primary antibody concentration and antibody incubation times.

**Please note:** All products are "FOR RESEARCH USE ONLY. NOT FOR USE IN DIAGNOSTIC PROCEDURES"

### Our Abpromise to you: Quality guaranteed and expert technical support

- Replacement or refund for products not performing as stated on the datasheet
- Valid for 12 months from date of delivery
- Response to your inquiry within 24 hours

- We provide support in Chinese, English, French, German, Japanese and Spanish
- Extensive multi-media technical resources to help you
- We investigate all quality concerns to ensure our products perform to the highest standards

If the product does not perform as described on this datasheet, we will offer a refund or replacement. For full details of the Abpromise, please visit <https://www.abcam.cn/abpromise> or contact our technical team.

### **Terms and conditions**

---

- Guarantee only valid for products bought direct from Abcam or one of our authorized distributors