

Anti-Chk2 antibody [EPR5528] ab133505

敲除验证 重组 RabMAb

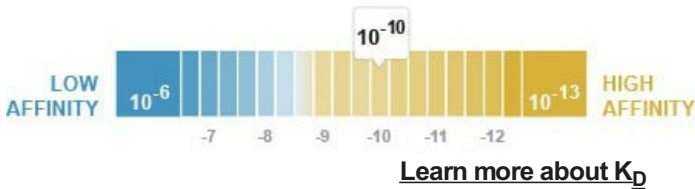
1 References 5 图像

概述

产品名称	Anti-Chk2抗体[EPR5528]
描述	兔单克隆抗体[EPR5528] to Chk2
宿主	Rabbit
经测试应用	适用于: WB 不适用于: Flow Cyt, ICC/IF, IHC-P or IP
种属反应性	与反应: Human
免疫原	Synthetic peptide within Human Chk2 aa 1-100 (N terminal). The exact sequence is proprietary.
阳性对照	SH-SY5Y, HeLa, HT29 and 293T cell lysates.
常规说明	<p>This product is a recombinant monoclonal antibody, which offers several advantages including:</p> <ul style="list-style-type: none">- High batch-to-batch consistency and reproducibility- Improved sensitivity and specificity- Long-term security of supply- Animal-free production <p>For more information see here.</p> <p>Our RabMAb[®] technology is a patented hybridoma-based technology for making rabbit monoclonal antibodies. For details on our patents, please refer to RabMAb[®] patents.</p> <p>Mouse, Rat: We have preliminary internal testing data to indicate this antibody may not react with these species. Please contact us for more information.</p>

性能

形式	Liquid
存放说明	Shipped at 4°C. Store at -20°C. Stable for 12 months at -20°C.
解离常数 (K _D)	K _D = 1.02 x 10 ⁻¹⁰ M



存储溶液	pH: 7.2 Preservative: 0.05% Sodium azide Constituents: 40% Glycerol (glycerin, glycerine), 9.85% Tris glycine, 50% Tissue culture supernatant
纯度	Tissue culture supernatant
克隆	单克隆
克隆编号	EPR5528
同种型	IgG

应用

The Abpromise guarantee **Abpromise™**承诺保证使用ab133505于以下的经测试应用

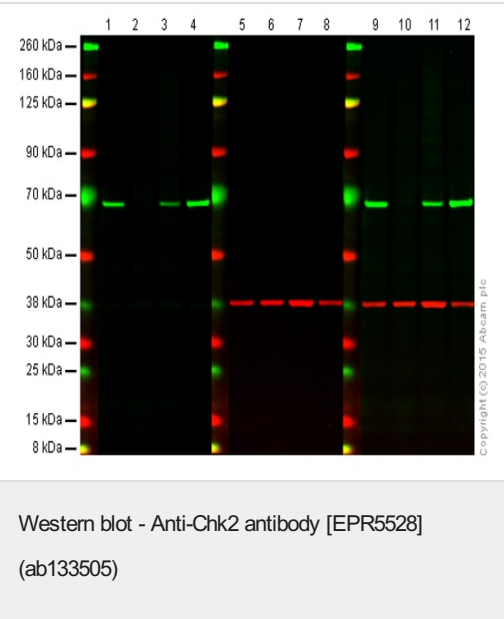
“应用说明”部分 下显示的仅为推荐的起始稀释度;实际最佳的稀释度/浓度应由使用者检定。

应用	Ab评论	说明
WB		Use at an assay dependent dilution. Detects a band of approximately 61 kDa (predicted molecular weight: 61 kDa).

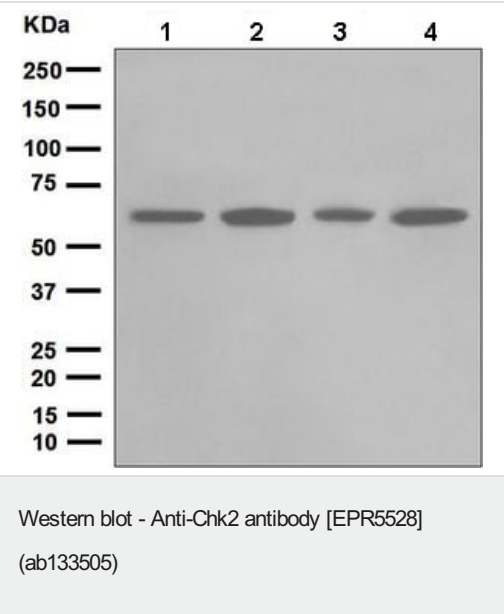
应用说明 Is unsuitable for Flow Cyt,ICC/IF,IHC-P or IP.

靶标

功能	Regulates cell cycle checkpoints and apoptosis in response to DNA damage, particularly to DNA double-strand breaks. Inhibits CDC25C phosphatase by phosphorylation on 'Ser-216', preventing the entry into mitosis. May also play a role in meiosis. Regulates the TP53 tumor suppressor through phosphorylation at 'Thr-18' and 'Ser-20'.
组织特异性	High expression is found in testis, spleen, colon and peripheral blood leukocytes. Low expression is found in other tissues.
疾病相关	Defects in CHEK2 are associated with Li-Fraumeni syndrome 2 (LFS2) [MIM:609265]; a highly penetrant familial cancer phenotype usually associated with inherited mutations in p53/TP53. Defects in CHEK2 may be a cause of susceptibility to prostate cancer (PC) [MIM:176807]. It is a malignancy originating in tissues of the prostate. Most prostate cancers are adenocarcinomas that develop in the acini of the prostatic ducts. Other rare histopathologic types of prostate cancer that occur in approximately 5% of patients include small cell carcinoma, mucinous carcinoma, prostatic ductal carcinoma, transitional cell carcinoma, squamous cell carcinoma, basal cell carcinoma, adenoid cystic carcinoma (basaloid), signet-ring cell carcinoma and neuroendocrine carcinoma. Defects in CHEK2 are found in some patients with osteogenic sarcoma (OSRC) [MIM:259500].
序列相似性	Belongs to the protein kinase superfamily. CAMK Ser/Thr protein kinase family. CHK2 subfamily. Contains 1 FHA domain. Contains 1 protein kinase domain.
翻译后修饰	Phosphorylated by PLK4.
细胞定位	Nucleus; Nucleus. Isoform 10 is present throughout the cell and Nucleus > PML body. Nucleus > nucleoplasm. Recruited into PML bodies together with TP53.



Lanes 1, 5 and 9: Wild-type HAP1 cell lysate (20 µg)
Lanes 2, 6 and 10: Chk2 knockout HAP1 cell lysate (20 µg)
Lanes 3, 7 and 11: HeLa cell lysate (20 µg)
Lanes 4, 8 and 12: HEK293 cell lysate (20 µg)
Lanes 1, 2, 3 and 4: Green signal from target - ab133505 observed at 62 kDa
Lanes 5, 6, 7 and 8: Red signal from loading control - [ab8245](#) observed at 37 kDa
Lanes 9, 10, 11 and 12: Merged (red and green) signal
ab133505 was shown to specifically react with Chk2 when Chk2 knockout samples were used. Wild-type and Chk2 knockout samples were subjected to SDS-PAGE. ab133505 and [ab8245](#) (loading control to GAPDH) were diluted 1/10000 and 1/2000 respectively and incubated overnight at 4°C. Blots were developed with Goat anti-Rabbit IgG H&L (IRDye® 800CW) preadsorbed [ab216773](#) and Goat anti-Mouse IgG H&L (IRDye® 680RD) preadsorbed [ab216776](#) secondary antibodies at 1/10000 dilution for 1 h at room temperature before imaging.



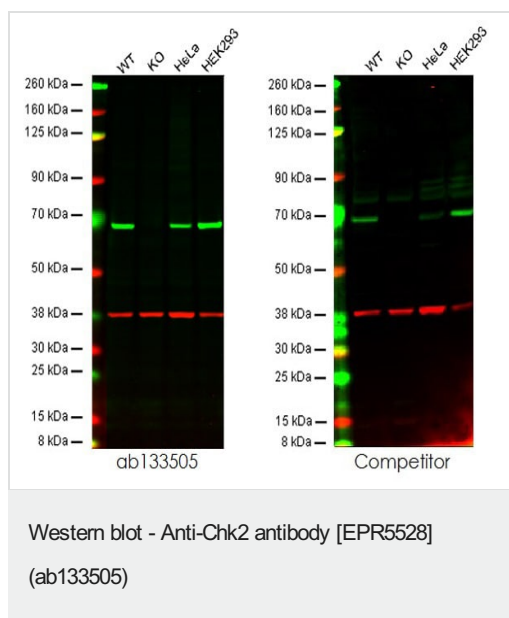
All lanes : Anti-Chk2 antibody [EPR5528] (ab133505) at 1/10000 dilution

Lane 1 : SH-SY5Y lysate
Lane 2 : HeLa lysate
Lane 3 : HT29 lysate
Lane 4 : 293T cell lysate

Lysates/proteins at 10 µg per lane.

Secondary
All lanes : Goat-anti-rabbit HRP at 1/2000 dilution

Predicted band size: 61 kDa
Observed band size: 61 kDa



Lanes 1: Wild-type HAP1 cell lysate (20 µg)

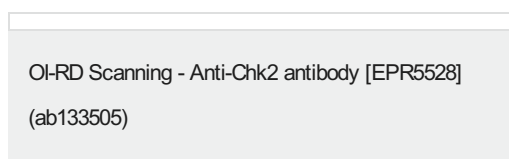
Lanes 2: Chk2 knockout HAP1 cell lysate (20 µg)

Lanes 3: HeLa cell lysate (20 µg)

Lanes 4: HEK293 cell lysate (20 µg)

Lanes 1 - 4: Merged signal (red and green). Green - ab133505 observed at 64 kDa. Red - loading control, [ab8245](#), observed at 37 kDa.

This western blot image is a comparison between ab133505 and a competitor's rabbit polyclonal antibody.



Equilibrium disassociation constant (K_D)

Learn more about K_D

[Click here to learn more about \$K_D\$](#)

Why choose a recombinant antibody?

Research with confidence
Consistent and reproducible results

Long-term and scalable supply
Recombinant technology

Success from the first experiment
Confirmed specificity

Ethical standards compliant
Animal-free production

Anti-Chk2 antibody [EPR5528] (ab133505)

Please note: All products are "FOR RESEARCH USE ONLY. NOT FOR USE IN DIAGNOSTIC PROCEDURES"

Our Abpromise to you: Quality guaranteed and expert technical support

- Replacement or refund for products not performing as stated on the datasheet
- Valid for 12 months from date of delivery
- Response to your inquiry within 24 hours

- We provide support in Chinese, English, French, German, Japanese and Spanish
- Extensive multi-media technical resources to help you
- We investigate all quality concerns to ensure our products perform to the highest standards

If the product does not perform as described on this datasheet, we will offer a refund or replacement. For full details of the Abpromise, please visit <https://www.abcam.cn/abpromise> or contact our technical team.

Terms and conditions

- Guarantee only valid for products bought direct from Abcam or one of our authorized distributors