

### Anti-Chk1 antibody [E250] ab32531

**重组** RabMAb

★★★★☆ **4 Abreviews** **11 References** **7 图像**

#### 概述

产品名称	Anti-Chk1抗体[E250]
描述	兔单克隆抗体[E250] to Chk1
宿主	Rabbit
经测试应用	<b>适用于:</b> Flow Cyt (Intra), IP, ICC/IF, WB <b>不适用于:</b> IHC
种属反应性	<b>与反应:</b> Mouse, Rat, Human
免疫原	Synthetic peptide within Human Chk1 aa 1-100 (N terminal). The exact sequence is proprietary.
阳性对照	IP: K-562 whole cell lysate. ICC/IF: HeLa cells. Flow Cyt (intra): K-562 cells. WB: K-562, Hela, NIH/3T3, MEF and PC-12 whole cell lysates
常规说明	This product is a recombinant monoclonal antibody, which offers several advantages including: <ul style="list-style-type: none"> <li>- High batch-to-batch consistency and reproducibility</li> <li>- Improved sensitivity and specificity</li> <li>- Long-term security of supply</li> <li>- Animal-free production</li> </ul> For more information <a href="#">see here</a> . Our RabMAb <sup>®</sup> technology is a patented hybridoma-based technology for making rabbit monoclonal antibodies. For details on our patents, please refer to <a href="#">RabMAb<sup>®</sup> patents</a> .

#### 性能

形式	Liquid
存放说明	Shipped at 4°C. Store at +4°C short term (1-2 weeks). Upon delivery aliquot. Store at -20°C long term. Avoid freeze / thaw cycle.
存储溶液	pH: 7.20 Preservative: 0.01% Sodium azide Constituents: 59% PBS, 40% Glycerol (glycerin, glycerine), 0.05% BSA
纯度	Protein A purified
克隆	单克隆
克隆编号	E250

同种型IgG

应用

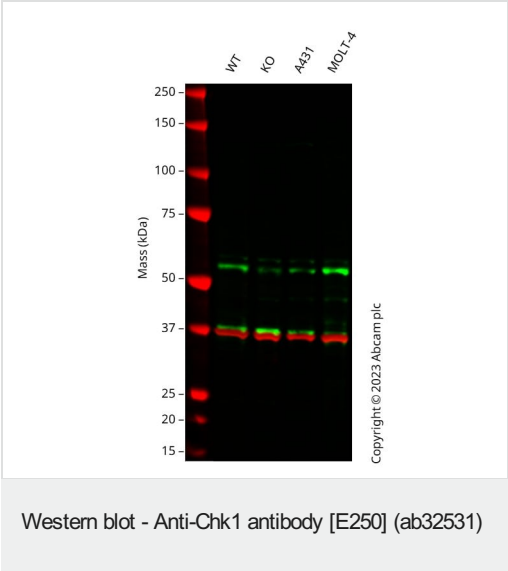
The Abpromise guarantee **Abpromise™**承诺保证使用ab32531于以下的经测试应用  
“应用说明”部分 下显示的仅为推荐的起始稀释度;实际最佳的稀释度/浓度应由使用者检定。

应用	Ab评论	说明
Flow Cyt (Intra)		1/30.
IP		1/20.
ICC/IF	★★★★☆ (2)	1/50.
WB	★★★★★ (2)	1/1000. Detects a band of approximately 54 kDa (predicted molecular weight: 54 kDa).

应用说明Is unsuitable for IHC.

靶标

图片



All lanes : Anti-Chk1 antibody [E250] (ab32531) at 1/1000 dilution

- Lane 1 : Wild-type A549 cell lysate
- Lane 2 : CHEK1 knockout A549 cell lysate
- Lane 3 : A431 cell lysate
- Lane 4 : MOLT-4 cell lysate

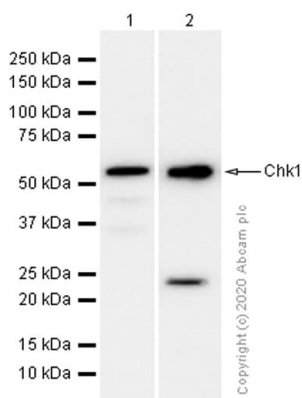
Lysates/proteins at 20 µg per lane.

Performed under reducing conditions.

Predicted band size: 54 kDa  
Observed band size: 57 kDa

Anti-CHEK1 antibody [E250] (ab32531) staining at 1/1000 dilution, shown in green; Mouse anti-GAPDH antibody [6C5] (**ab8245**) loading control staining at 1/20000 dilution, shown in red. In Western blot, ab32531 was shown to bind specifically to CHEK1. A

band was observed at 57 kDa in wild-type A549 cell lysates with a reduction in signal observed at this size in CHEK1 heterozygous knockout cell line. To generate this image, wild-type and CHEK1 heterozygous knockout A549 cell lysates were analysed. First, samples were run on an SDS-PAGE gel then transferred onto a nitrocellulose membrane. Membranes were blocked in 3 % milk in TBS-0.1 % Tween® 20 (TBS-T) before incubation with primary antibodies overnight at 4 °C. Blots were washed four times in TBS-T, incubated with secondary antibodies for 1 h at room temperature, washed again four times then imaged. Secondary antibodies used were Goat anti-Rabbit IgG H&L 800CW and Goat anti-Mouse IgG H&L 680RD at 1/20000 dilution.



Western blot - Anti-Chk1 antibody [E250] (ab32531)

**All lanes :** Anti-Chk1 antibody [E250] (ab32531) at 1/10000 dilution (Purified)

**Lane 1 :** MEF (Mouse embryonic fibroblast (immortalized)) whole cell lysate

**Lane 2 :** PC-12 (Rat adrenal gland pheochromocytoma ) whole cell lysate

Lysates/proteins at 15 µg per lane.

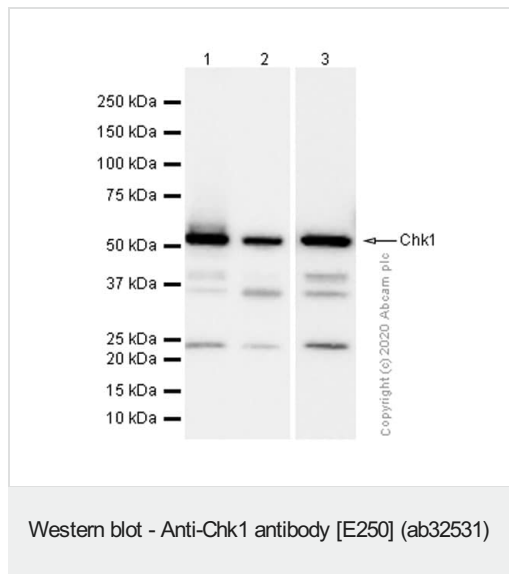
#### Secondary

**All lanes :** Goat Anti-Rabbit IgG H&L (HRP) (**ab97051**) at 1/20000 dilution (Goat Anti-Rabbit IgG, (H+L), Peroxidase conjugated)

**Predicted band size:** 54 kDa

**Observed band size:** 54 kDa

We are unsure how to define the extra bands.



**All lanes :** Purified at 1/1000 dilution

**Lane 1 :** K-562 (Human chronic myelogenous leukemia lymphoblast) whole cell lysate

**Lane 2 :** HeLa (Human cervix adenocarcinoma epithelial cell) whole cell lysate

**Lane 3 :** NIH/3T3 (Mouse embryonic fibroblast) whole cell lysate

Lysates/proteins at 20 µg per lane.

### Secondary

**All lanes :** Goat Anti-Rabbit IgG, (H+L), Peroxidase conjugated at 1/20000 dilution

**Predicted band size:** 54 kDa

**Observed band size:** 54 kDa

We are unsure how to define the extra bands.



Immunoprecipitation - Anti-Chk1 antibody [E250]  
(ab32531)

Purified ab32531 at 1/20 dilution (1µg) immunoprecipitating Chk1 in K-562 whole cell lysate.

Lane 1 (input): K-562 (Human chronic myelogenous leukemia lymphoblast) whole cell lysate 10µg

Lane 2 (+): ab32531 + K-562 whole cell lysate.

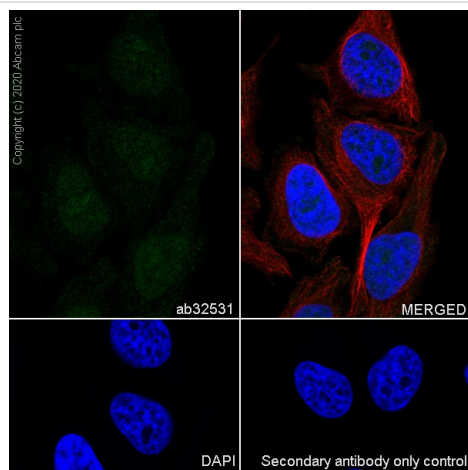
Lane 3 (-): Rabbit monoclonal IgG (**ab172730**) instead of ab32531 in K-562 whole cell lysate.

VeriBlot for IP Detection Reagent (HRP) (**ab131366**) (1/1000 dilution) was used for Western blotting.

Blocking Buffer and concentration: 5% NFDM/TBST.

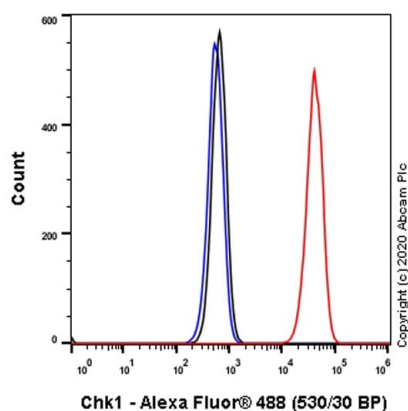
Diluting buffer and concentration: 5% NFDM/TBST.

Observed band size: 54 kDa



Immunocytochemistry/ Immunofluorescence - Anti-Chk1 antibody [E250] (ab32531)

Immunocytochemistry analysis of HeLa (Human cervix adenocarcinoma epithelial cell) cells labeling Chk1 with purified ab32531 at 1/50 dilution (5.06 µg/mL). Cells were fixed in 4% Paraformaldehyde and permeabilized with 0.1% tritonX-100. Cells were counterstained with Ab195889 Anti-alpha Tubulin antibody [DM1A] - Microtubule Marker (Alexa Fluor® 594) 1/200 (2.5 µg/mL). Goat anti rabbit IgG (Alexa Fluor® 488, **ab150077**) was used as the secondary antibody at 1/1000 (2 µg/mL) dilution. DAPI (blue) was used as nuclear counterstain. PBS instead of the primary antibody was used as the secondary antibody only control.



Flow Cytometry (Intracellular) - Anti-Chk1 antibody [E250] (ab32531)

Intracellular Flow Cytometry analysis of K-562 (Human chronic myelogenous leukemia lymphoblast) cells labeling Chk1 with purified ab32531 at 1/30 dilution (10 µg/mL) (Red). Cells were fixed with 4% Paraformaldehyde and permeabilised with 90% Methanol. A Goat anti rabbit IgG (Alexa Fluor® 488, **ab150077**) secondary antibody was used at 1/2000. Isotype control - Rabbit monoclonal IgG (Black). Unlabeled control - Cell without incubation with primary antibody and secondary antibody (Blue).

### Why choose a recombinant antibody?



**Research with confidence**  
Consistent and reproducible results



**Long-term and scalable supply**  
Recombinant technology



**Success from the first experiment**  
Confirmed specificity



**Ethical standards compliant**  
Animal-free production

Anti-Chk1 antibody [E250] (ab32531)

**Please note:** All products are "FOR RESEARCH USE ONLY. NOT FOR USE IN DIAGNOSTIC PROCEDURES"

### Our Abpromise to you: Quality guaranteed and expert technical support

---

- Replacement or refund for products not performing as stated on the datasheet
- Valid for 12 months from date of delivery
- Response to your inquiry within 24 hours
- We provide support in Chinese, English, French, German, Japanese and Spanish
- Extensive multi-media technical resources to help you
- We investigate all quality concerns to ensure our products perform to the highest standards

If the product does not perform as described on this datasheet, we will offer a refund or replacement. For full details of the Abpromise, please visit <https://www.abcam.cn/abpromise> or contact our technical team.

### Terms and conditions

---

- Guarantee only valid for products bought direct from Abcam or one of our authorized distributors