

Anti-CHD5 antibody [EPR23858-3] ab259857

重组 RabMAb

4 图像

概述

产品名称	Anti-CHD5抗体[EPR23858-3]
描述	兔单克隆抗体[EPR23858-3] to CHD5
宿主	Rabbit
经测试应用	适用于: Flow Cyt (Intra), ICC/IF, WB 不适用于: IHC-P or IP
种属反应性	与反应: Human
免疫原	Synthetic peptide. This information is proprietary to Abcam and/or its suppliers.
阳性对照	WB: PANC-1 lysates. ICC/IF: PANC-1 cells. Flow Cyt(Intra): PANC-1 cells.
常规说明	This product is a recombinant monoclonal antibody, which offers several advantages including: <ul style="list-style-type: none"> - High batch-to-batch consistency and reproducibility - Improved sensitivity and specificity - Long-term security of supply - Animal-free production For more information see here . Our RabMAb [®] technology is a patented hybridoma-based technology for making rabbit monoclonal antibodies. For details on our patents, please refer to RabMAb[®] patents .

性能

形式	Liquid
存放说明	Shipped at 4°C. Store at +4°C short term (1-2 weeks). Upon delivery aliquot. Store at -20°C. Avoid freeze / thaw cycle.
存储溶液	pH: 7.2 Preservative: 0.01% Sodium azide Constituents: 59.94% PBS, 40% Glycerol (glycerin, glycerine), 0.05% BSA
纯度	Protein A purified
克隆	单克隆
克隆编号	EPR23858-3
同种型	IgG

应用

The Abpromise guarantee

Abpromise™ 承诺保证使用ab259857于以下的经测试应用

“应用说明”部分下显示的仅为推荐的起始稀释度；实际最佳的稀释度/浓度应由使用者检定。

应用	Ab评论	说明
Flow Cyt (Intra)		1/500.
ICC/IF		1/100.
WB		1/1000. Predicted molecular weight: 223 kDa.

应用说明

Is unsuitable for IHC-P or IP.

靶标

功能

May play a role in the development of the nervous system and the pathogenesis of neural tumors.

组织特异性

Preferentially expressed in total brain, fetal brain, and cerebellum. It is also moderately expressed in the adrenal gland.

序列相似性

Belongs to the SNF2/RAD54 helicase family.

Contains 2 chromo domains.

Contains 1 helicase ATP-binding domain.

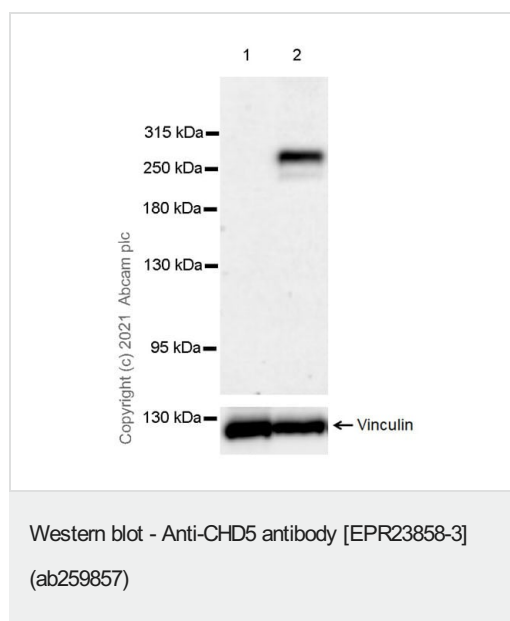
Contains 1 helicase C-terminal domain.

Contains 2 PHD-type zinc fingers.

细胞定位

Nucleus.

图片



All lanes : Anti-CHD5 antibody [EPR23858-3] (ab259857) at 1/1000 dilution

Lane 1 : HeLa (human cervix adenocarcinoma epithelial cell) whole cell lysate

Lane 2 : PANC-1 (human pancreatic epithelioid carcinoma epithelial cell) whole cell lysate

Lysates/proteins at 40 µg per lane.

Secondary

All lanes : Goat Anti-Rabbit IgG H&L (HRP) (**ab97051**) at 1/50000 dilution (Goat Anti-Rabbit IgG, (H+L), Peroxidase conjugated)

Predicted band size: 223 kDa

Observed band size: 260 kDa

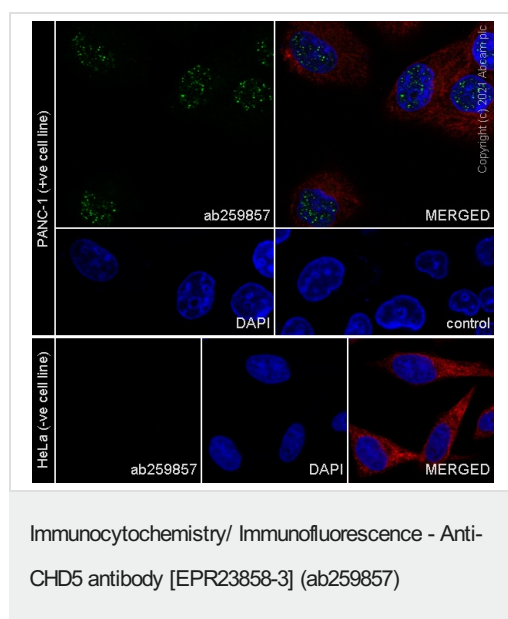
Blocking and diluting buffer and concentration: 5% NFDM/TBST

The molecular weight observed is consistent with what has been described in the literature (PMID: 25247294).

Negative control: HeLa (PMID: 21931736).

Lysates were made freshly and used in WB immediately to minimize protein degradation.

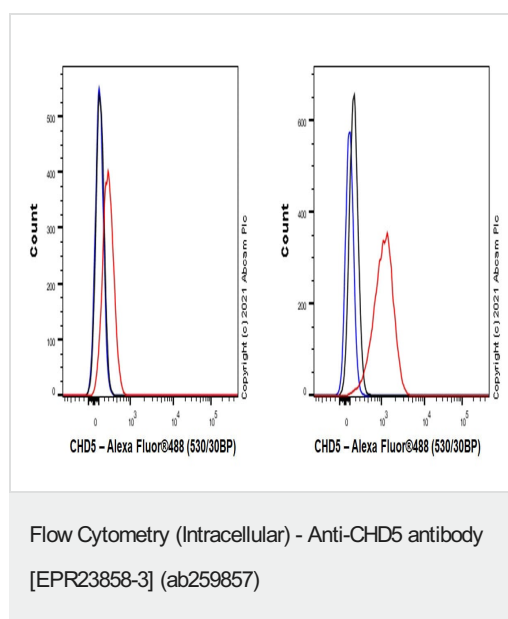
Exposure time: 136 seconds



Immunofluorescent analysis of 100% methanol-fixed, 0.1% TritonX-100 permeabilized PANC-1 cells labelling CHD5 with ab259857 at 1/100 (5.55 ug/ml) dilution, followed by **ab150081** Goat Anti-Rabbit IgG H&L (Alexa Fluor® 488) preadsorbed antibody at 1/1000 dilution (Green) Confocal image showing nuclear staining in PANC-1 cell line. **Negative control:** HeLa (PMID: 29682202) is observed.

ab195889 Anti-alpha Tubulin mouse monoclonal antibody - Microtubule Marker (Alexa Fluor® 594) was used to counterstain tubulin at 1/200 dilution (Red). The Nuclear counterstain was DAPI (Blue).

Secondary antibody only control: Secondary antibody is **ab150081** Goat Anti-Rabbit IgG H&L (Alexa Fluor® 488) preadsorbed at 1/1000 dilution.



Flow cytometric analysis of 4% paraformaldehyde fixed 90% methanol permeabilized HeLa(Human cervix adenocarcinoma epithelial cell, Left)/ PANC-1 (Human pancreatic epithelioid carcinoma epithelial cell, Right) cells labelling CHD5 with ab259857 at 1/500 dilution (0.1ug)/ (Red) compared with a Rabbit monoclonal IgG (**ab172730**) (Black) isotype control and an unlabelled control (cells without incubation with primary antibody and secondary antibody) (Blue). A Goat anti rabbit IgG (Alexa Fluor® 488, **ab150077**) at 1/2000 dilution was used as the secondary antibody. **Negative control:** HeLa (PMID: 29682202).

Why choose a recombinant antibody?



Research with confidence
Consistent and reproducible results



Long-term and scalable supply
Recombinant technology



Success from the first experiment
Confirmed specificity



Ethical standards compliant
Animal-free production

Anti-CHD5 antibody [EPR23858-3] (ab259857)

Please note: All products are "FOR RESEARCH USE ONLY. NOT FOR USE IN DIAGNOSTIC PROCEDURES"

Our Abpromise to you: Quality guaranteed and expert technical support

- Replacement or refund for products not performing as stated on the datasheet
- Valid for 12 months from date of delivery
- Response to your inquiry within 24 hours
- We provide support in Chinese, English, French, German, Japanese and Spanish
- Extensive multi-media technical resources to help you
- We investigate all quality concerns to ensure our products perform to the highest standards

If the product does not perform as described on this datasheet, we will offer a refund or replacement. For full details of the Abpromise, please visit <https://www.abcam.cn/abpromise> or contact our technical team.

Terms and conditions

- Guarantee only valid for products bought direct from Abcam or one of our authorized distributors