

CF405M Anti-CD105 antibody [2H6F11], prediluted ab123634

1 图像

概述

产品名称	CF405M Anti-CD105抗体[2H6F11], prediluted
描述	CF405M小鼠单克隆抗体[2H6F11] to CD105, prediluted
宿主	Mouse
偶联物	CF405M. Ex: 408nm, Em: 452nm
经测试应用	适用于: Flow Cyt
种属反应性	与反应: Human
免疫原	Recombinant full length protein corresponding to CD105. Human Endoglin fusion protein.
阳性对照	Nalm-6 cell line
常规说明	

CD105 is a component of the TGF-B receptor system and can bind TGF-B1 and TGF-B3 with high affinity but does not bind TGF-B2. CD105 is expressed by vascular endothelial cells and syncytiotrophoblasts of placenta, Pre-B cells in fetal marrow, erythroid precursors in fetal and adult bone marrow and is weakly expressed by stromal fibroblasts. U937 cells and monocytes and tissue macrophages also expresses weakly CD105. Expression of CD105 is increased on activated endothelium in tissues undergoing angiogenesis, such as in tumours, or in cases of wound healing or dermal inflammation.

CF405M (Abs/Em Max: 408/450nm). Direct replacement for Pacific Blue dye[®], BD Horizon™ V450.

The Life Science industry has been in the grips of a reproducibility crisis for a number of years. Abcam is leading the way in addressing this with our range of recombinant monoclonal antibodies and knockout edited cell lines for gold-standard validation. Please check that this product meets your needs before purchasing.

If you have any questions, special requirements or concerns, please send us an inquiry and/or contact our Support team ahead of purchase. Recommended alternatives for this product can be found below, along with publications, customer reviews and Q&As

性能

形式	Liquid
存放说明	Shipped at 4°C. Store at +4°C.
存储溶液	pH: 7.20

Preservative: 0.09% Sodium azide

纯度

Immunogen affinity purified

Primary antibody说明

CD105 is a component of the TGF-B receptor system and can bind TGF-B1 and TGF-B3 with high affinity but does not bind TGF-B2. CD105 is expressed by vascular endothelial cells and syncytiotrophoblasts of placenta, Pre-B cells in fetal marrow, erythroid precursors in fetal and adult bone marrow and is weakly expressed by stromal fibroblasts. U937 cells and monocytes and tissue macrophages also expresses weakly CD105. Expression of CD105 is increased on activated endothelium in tissues undergoing angiogenesis, such as in tumours, or in cases of wound healing or dermal inflammation.

克隆

单克隆

克隆编号

2H6F11

同种型

IgG1

应用

The Abpromise guarantee

Abpromise™承诺保证使用ab123634于以下的经测试应用

“应用说明”部分 下显示的仅为推荐的起始稀释度;实际最佳的稀释度/浓度应由使用者检定。

应用	Ab评论	说明
Flow Cyt		Use 5µl for 10 ⁶ cells. ab126026 - Mouse monoclonal IgG1, is suitable for use as an isotype control with this antibody.

靶标

功能

Major glycoprotein of vascular endothelium. May play a critical role in the binding of endothelial cells to integrins and/or other RGD receptors.

组织特异性

Endoglin is restricted to endothelial cells in all tissues except bone marrow.

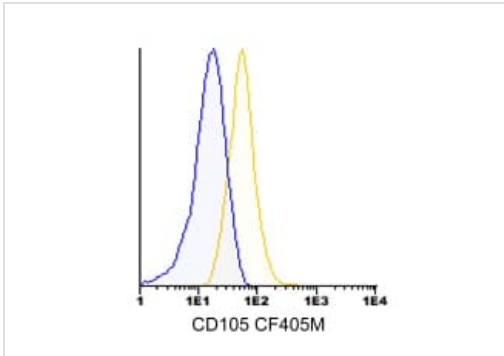
疾病相关

Defects in ENG are the cause of hereditary hemorrhagic telangiectasia type 1 (HHT1) [MIM:187300, 108010]; also known as Osler-Rendu-Weber syndrome 1 (ORW1). HHT1 is an autosomal dominant multisystemic vascular dysplasia, characterized by recurrent epistaxis, muco-cutaneous telangiectases, gastro-intestinal hemorrhage, and pulmonary (PAVM), cerebral (CAVM) and hepatic arteriovenous malformations; all secondary manifestations of the underlying vascular dysplasia. Although the first symptom of HHT1 in children is generally nose bleed, there is an important clinical heterogeneity.

细胞定位

Membrane.

图片



Flow Cytometry - CF405M Anti-CD105 antibody
[2H6F11], prediluted (ab123634)

Staining of Nalm-6 cell line with ab123634 at $5 \mu\text{l}/10^6$ cells and isotype control IgG1 CFBlue. Total cells were used for analysis.

Please note: All products are "FOR RESEARCH USE ONLY. NOT FOR USE IN DIAGNOSTIC PROCEDURES"

Our Abpromise to you: Quality guaranteed and expert technical support

- Replacement or refund for products not performing as stated on the datasheet
- Valid for 12 months from date of delivery
- Response to your inquiry within 24 hours
- We provide support in Chinese, English, French, German, Japanese and Spanish
- Extensive multi-media technical resources to help you
- We investigate all quality concerns to ensure our products perform to the highest standards

If the product does not perform as described on this datasheet, we will offer a refund or replacement. For full details of the Abpromise, please visit <https://www.abcam.cn/abpromise> or contact our technical team.

Terms and conditions

- Guarantee only valid for products bought direct from Abcam or one of our authorized distributors