

Anti-CETP antibody [EPR13] ab157183

重组 RabMAb

2 References 3 图像

概述	
产品名称	Anti-CETP抗体[EPR13]
描述	兔单克隆抗体[EPR13] to CETP
宿主	Rabbit
经测试应用	适用于: WB, IP 不适用于: ICC/IF or IHC-P
种属反应性	与反应: Human
免疫原	Synthetic peptide. This information is proprietary to Abcam and/or its suppliers.
阳性对照	Recombinant Human CETP protein (ab114408) can be used as a positive control in WB. Human plasma lysate.
常规说明	<p>This product is a recombinant monoclonal antibody, which offers several advantages including:</p> <ul style="list-style-type: none">- High batch-to-batch consistency and reproducibility- Improved sensitivity and specificity- Long-term security of supply- Animal-free production <p>For more information see here.</p> <p>Our RabMAb[®] technology is a patented hybridoma-based technology for making rabbit monoclonal antibodies. For details on our patents, please refer to RabMAb[®] patents.</p> <p>Mouse, Rat: We have preliminary internal testing data to indicate this antibody may not react with these species. Please contact us for more information.</p>
性能	
形式	Liquid
存放说明	Shipped at 4°C. Store at -20°C.
存储溶液	pH: 7.2 Preservative: 0.01% Sodium azide Constituents: 59% PBS, 40% Glycerol (glycerin, glycerine), 0.5% BSA
纯度	Protein A purified
克隆	单克隆

克隆编号EPR13

同种型IgG

应用

The Abpromise guarantee **Abpromise™**承诺保证使用ab157183于以下的经测试应用

“应用说明”部分 下显示的仅为推荐的起始稀释度;实际最佳的稀释度/浓度应由使用者检定。

应用	Ab评论	说明
WB		1/1000 - 1/10000. Predicted molecular weight: 55 kDa.
IP		1/10 - 1/100.

应用说明 Is unsuitable for ICC/IF or IHC-P.

靶标

功能 Involved in the transfer of insoluble cholesteryl esters in the reverse transport of cholesterol.

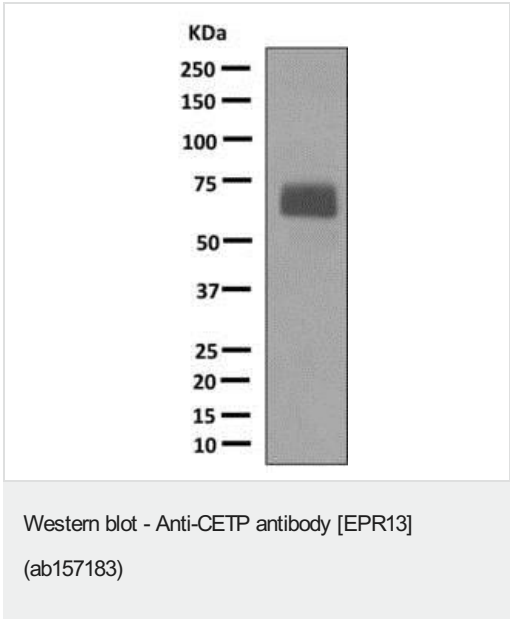
组织特异性 Expressed by the liver and secreted in plasma.

疾病相关 Defects in CETP are a cause of hyperalphalipoproteinemia (HYPALIP) [MIM:143470]. Affected individuals show high levels of alpha-lipoprotein (high density lipoprotein/HDL).
Defects in CETP are the cause of cholesteryl ester transfer protein deficiency (CETP deficiency) [MIM:607322]. This is an autosomal dominant condition associated with increased HDL cholesterol levels.

序列相似性 Belongs to the BPI/LBP/Plunc superfamily. BPI/LBP family.

细胞定位 Secreted > extracellular space.

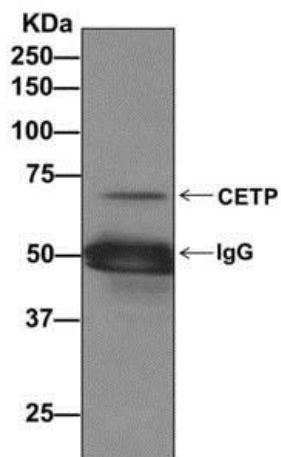
图片



Anti-CETP antibody [EPR13] (ab157183) at 1/1000 dilution + Human plasma lysate at 10 µg

Secondary
Goat anti-rabbit HRP at 1/2000 dilution

Predicted band size: 55 kDa

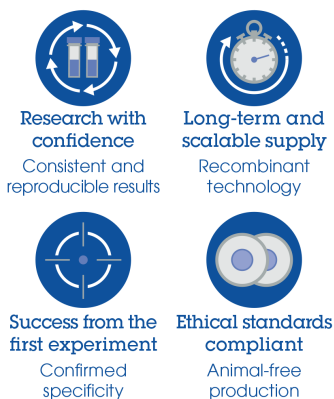


Immunoprecipitation - Anti-CETP antibody [EPR13]
(ab157183)

Detection of CETP by Western Blot of Immunoprecipitate. Human plasma lysates immunoprecipitated using ab157183 at 1/10 dilution.

Anti-CETP antibody [EPR13] (ab157183) at 1/1000 dilution + immunoprecipitation pellets from Human plasma at 10 µg

Why choose a recombinant antibody?



Anti-CETP antibody [EPR13] (ab157183)

Please note: All products are "FOR RESEARCH USE ONLY. NOT FOR USE IN DIAGNOSTIC PROCEDURES"

Our Abpromise to you: Quality guaranteed and expert technical support

- Replacement or refund for products not performing as stated on the datasheet
- Valid for 12 months from date of delivery
- Response to your inquiry within 24 hours
- We provide support in Chinese, English, French, German, Japanese and Spanish
- Extensive multi-media technical resources to help you
- We investigate all quality concerns to ensure our products perform to the highest standards

If the product does not perform as described on this datasheet, we will offer a refund or replacement. For full details of the Abpromise, please visit <https://www.abcam.cn/abpromise> or contact our technical team.

Terms and conditions

- Guarantee only valid for products bought direct from Abcam or one of our authorized distributors