




Anti-CETP antibody [ATM192] ab2726

★★★★★ [3 Abreviews](#) [4 References](#) [2 图像](#)

概述

产品名称	Anti-CETP抗体[ATM192]
描述	小鼠单克隆抗体[ATM192] to CETP
宿主	Mouse
特异性	Detects cholesteryl ester transfer protein (CETP) from human and rabbit tissues.
经测试应用	适用于: ICC/IF, WB
种属反应性	与反应: Human 预测可用于: Cynomolgus monkey 
免疫原	Synthetic peptide corresponding to Human CETP aa 149-159. Sequence: CDSGRVRTDAPD <div>  Run BLAST with  Run BLAST with </div>
常规说明	<p>The Life Science industry has been in the grips of a reproducibility crisis for a number of years. Abcam is leading the way in addressing this with our range of recombinant monoclonal antibodies and knockout edited cell lines for gold-standard validation. Please check that this product meets your needs before purchasing.</p> <p>If you have any questions, special requirements or concerns, please send us an inquiry and/or contact our Support team ahead of purchase. Recommended alternatives for this product can be found below, along with publications, customer reviews and Q&As</p>

性能

形式	Liquid
存放说明	Shipped at 4°C. Store at +4°C short term (1-2 weeks). Upon delivery aliquot. Store at -20°C or -80°C. Avoid freeze / thaw cycle.
存储溶液	Preservative: 0.05% Sodium azide Constituent: PBS
纯度	Protein A purified
纯化说明	Purified from TCS
克隆	单克隆
克隆编号	ATM192

同种型

IgG1

应用

The Abpromise guarantee **Abpromise™**承诺保证使用ab2726于以下的经测试应用

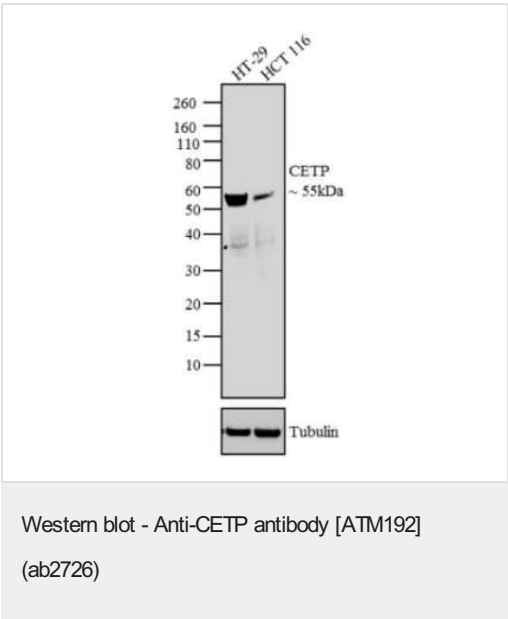
“应用说明”部分 下显示的仅为推荐的起始稀释度;实际最佳的稀释度/浓度应由使用者检定。

应用	Ab评论	说明
ICC/IF		1/20.
WB	★★★★★ (3)	Use a concentration of 2 µg/ml. Predicted molecular weight: 55 kDa.

靶标

功能	Involved in the transfer of insoluble cholesteryl esters in the reverse transport of cholesterol.
组织特异性	Expressed by the liver and secreted in plasma.
疾病相关	Defects in CETP are a cause of hyperalphalipoproteinemia (HYPALIP) [MIM:143470]. Affected individuals show high levels of alpha-lipoprotein (high density lipoprotein/HDL). Defects in CETP are the cause of cholesteryl ester transfer protein deficiency (CETP deficiency) [MIM:607322]. This is an autosomal dominant condition associated with increased HDL cholesterol levels.
序列相似性	Belongs to the BPI/LBP/Plunc superfamily. BPI/LBP family.
细胞定位	Secreted > extracellular space.

图片



All lanes : Anti-CETP antibody [ATM192] (ab2726) at 2 µg/ml

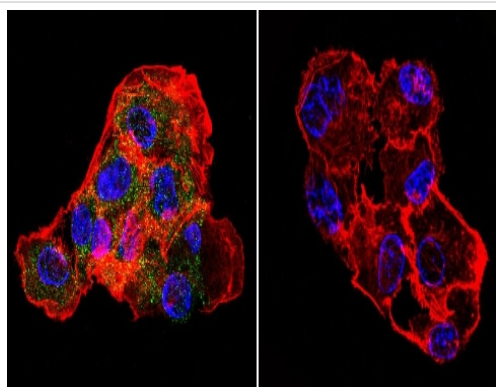
Lane 1 : HT-29 whole cell extracts

Lane 2 : HCT 116 whole cell extracts

Secondary

All lanes : Goat anti-Mouse IgG (H+L) Superclonal™ Secondary Antibody, HRP conjugate at 0.4 µg/ml

Predicted band size: 55 kDa



Immunocytochemistry/ Immunofluorescence - Anti-CETP antibody [ATM192] (ab2726)

Immunocytochemistry/Immunofluorescence analysis of CETP in HepG2 cells. Cells were grown on chamber slides and fixed with formaldehyde prior to staining. Cells were probed without (control) or with ab2726 (1:20) overnight at 4°C, washed with PBS and incubated with a DyLight-488 conjugated secondary antibody. CETP staining (green), F-Actin staining with Phalloidin (red) and nuclei with DAPI (blue) is shown. Images were taken at 60X magnification.

Please note: All products are "FOR RESEARCH USE ONLY. NOT FOR USE IN DIAGNOSTIC PROCEDURES"

Our Abpromise to you: Quality guaranteed and expert technical support

- Replacement or refund for products not performing as stated on the datasheet
- Valid for 12 months from date of delivery
- Response to your inquiry within 24 hours
- We provide support in Chinese, English, French, German, Japanese and Spanish
- Extensive multi-media technical resources to help you
- We investigate all quality concerns to ensure our products perform to the highest standards

If the product does not perform as described on this datasheet, we will offer a refund or replacement. For full details of the Abpromise, please visit <https://www.abcam.cn/abpromise> or contact our technical team.

Terms and conditions

- Guarantee only valid for products bought direct from Abcam or one of our authorized distributors