

### Anti-CENPC antibody [EPR15939] ab193666

**重组** RabMAb

★★★★★ **3 Abreviews** **3 References** **8 图像**

#### 概述

产品名称	Anti-CENPC抗体[EPR15939]
描述	兔单克隆抗体[EPR15939] to CENPC
宿主	Rabbit
经测试应用	<b>适用于:</b> Flow Cyt (Intra), IP, IHC-P, WB
种属反应性	<b>与反应:</b> Mouse, Rat, Human
免疫原	Recombinant fragment. This information is proprietary to Abcam and/or its suppliers.
阳性对照	WB: Jurkat, A431, K562 and NIH/3T3 cell lysates. IHC-P: Human spleen tissue; Rat cardiac muscle tissue. Flow Cyt (intra): K562 cells.
常规说明	<p>This product is a recombinant monoclonal antibody, which offers several advantages including:</p> <ul style="list-style-type: none"> <li>- High batch-to-batch consistency and reproducibility</li> <li>- Improved sensitivity and specificity</li> <li>- Long-term security of supply</li> <li>- Animal-free production</li> </ul> <p>For more information <b><a href="#">see here</a></b>.</p> <p>Our RabMAb<sup>®</sup> technology is a patented hybridoma-based technology for making rabbit monoclonal antibodies. For details on our patents, please refer to <b><a href="#">RabMAb<sup>®</sup> patents</a></b>.</p>

#### 性能

存放说明	Shipped at 4°C. Store at +4°C short term (1-2 weeks). Upon delivery aliquot. Store at -20°C long term. Avoid freeze / thaw cycle.
存储溶液	<p>pH: 7.2</p> <p>Preservative: 0.01% Sodium azide</p> <p>Constituents: 59% PBS, 40% Glycerol (glycerin, glycerine), 0.05% BSA</p>
纯度	Protein A purified
克隆	单克隆
克隆编号	EPR15939
同种型	IgG

应用

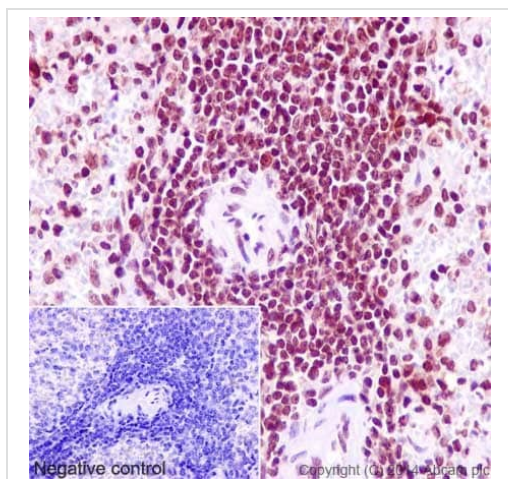
**The Abpromise guarantee**      **Abpromise™**承诺保证使用ab193666于以下的经测试应用  
“应用说明”部分 下显示的仅为推荐的起始稀释度;实际最佳的稀释度/浓度应由使用者检定。

应用	Ab评论	说明
Flow Cyt (Intra)		1/400. <b>ab172730</b> - Rabbit monoclonal IgG, is suitable for use as an isotype control with this antibody.
IP		1/100.
IHC-P		1/500 - 1/1000. Perform heat mediated antigen retrieval with Tris/EDTA buffer pH 9.0 before commencing with IHC staining protocol.
WB		1/1000 - 1/10000. Detects a band of approximately 107 kDa (predicted molecular weight: 107 kDa).

靶标

功能	Component of the CENPA-NAC (nucleosome-associated) complex, a complex that plays a central role in assembly of kinetochore proteins, mitotic progression and chromosome segregation. The CENPA-NAC complex recruits the CENPA-CAD (nucleosome distal) complex and may be involved in incorporation of newly synthesized CENPA into centromeres. CENPC recruits DNA methylation and DNMT3B to both centromeric and pericentromeric satellite repeats and regulates the histone code in these regions.
序列相似性	Belongs to the CENPC family.
结构域	The MIF2 homology domain II targets centromeres and binds the alpha satellite DNA in vivo. The MIF2 homology domain III can induce CENPC dimerization/oligomerization.
细胞定位	Nucleus. Chromosome > centromere > kinetochore. Localizes exclusively in the kinetochore domain of centromeres.

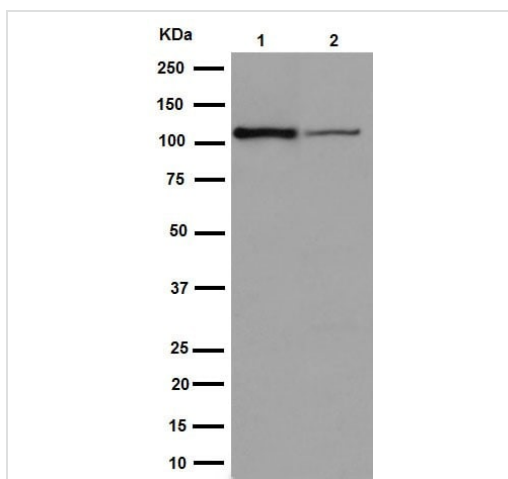
图片



Immunohistochemistry (Formalin/PFA-fixed paraffin-embedded sections) - Anti-CENPC antibody [EPR15939] (ab193666)

Immunohistochemical analysis of paraffin-embedded human spleen tissue labeling CENPC with ab193666 at 1/1,000 dilution, followed by prediluted HRP polymer for Rabbit/Mouse IgG. Counter stained with hematoxylin.

Perform heat mediated antigen retrieval with Tris/EDTA buffer pH 9.0 before commencing with IHC staining protocol.



Western blot - Anti-CENPC antibody [EPR15939] (ab193666)

**All lanes :** Anti-CENPC antibody [EPR15939] (ab193666) at 1/5000 dilution

**Lane 1 :** Jurkat cell lysate

**Lane 2 :** A431 cell lysate

Lysates/proteins at 20 µg per lane.

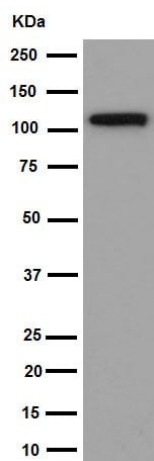
#### Secondary

**All lanes :** Goat Anti-Rabbit IgG, (H+L), Peroxidase conjugated at 1/1000 dilution

**Predicted band size:** 107 kDa

**Observed band size:** 107 kDa

Blocking/Dilution buffer: 5% NFDm/TBST.



Western blot - Anti-CENPC antibody [EPR15939]  
(ab193666)

Anti-CENPC antibody [EPR15939] (ab193666) at 1/10000 dilution  
+ K562 cell lysate at 10  $\mu$ g

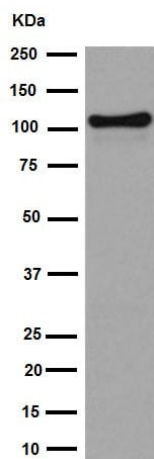
#### Secondary

Goat Anti-Rabbit IgG, (H+L), Peroxidase conjugated at 1/1000  
dilution

**Predicted band size:** 107 kDa

**Observed band size:** 107 kDa

Blocking/Dilution buffer: 5% NFDM/TBST.



Western blot - Anti-CENPC antibody [EPR15939]  
(ab193666)

Anti-CENPC antibody [EPR15939] (ab193666) at 1/1000 dilution +  
NIH/3T3 cell lysate at 10  $\mu$ g

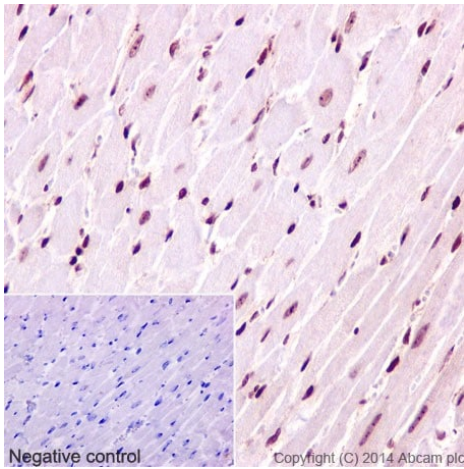
#### Secondary

Goat Anti-Rabbit IgG, (H+L), Peroxidase conjugated at 1/1000  
dilution

**Predicted band size:** 107 kDa

**Observed band size:** 107 kDa

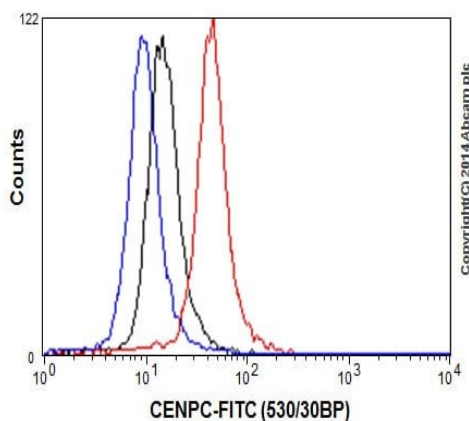
Blocking/Dilution buffer: 5% NFDM/TBST.



Immunohistochemistry (Formalin/PFA-fixed paraffin-embedded sections) - Anti-CENPC antibody [EPR15939] (ab193666)

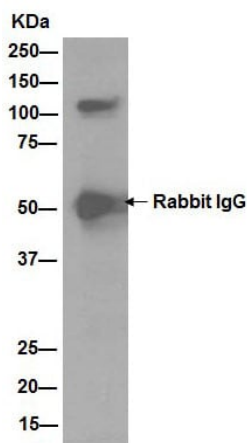
Immunohistochemical analysis of paraffin-embedded Rat cardiac muscle tissue labeling CENPC with ab193666 at 1/1000 dilution (2µg/ml), followed by prediluted HRP Polymer for Rabbit/Mouse IgG. Counter stained with Hematoxylin.

Perform heat mediated antigen retrieval with Tris/EDTA buffer pH 9.0 before commencing with IHC staining protocol.



Flow Cytometry (Intracellular) - Anti-CENPC antibody [EPR15939] (ab193666)

Intracellular flow cytometric analysis of 2% paraformaldehyde-fixed K562 cells labeling CENPC with ab193666 at 1/400 dilution (red) compared with a rabbit monoclonal IgG isotype control (black) and an unlabelled control (cells without incubation with primary antibody and secondary antibody; blue). Goat anti rabbit IgG (FITC) at 1/150 dilution was used as the secondary antibody.



Western blot analysis of CENPC immunoprecipitated from Jurkat cell lysate using ab193666 at 1/100 dilution.

Secondary antibody: Goat Anti-Rabbit IgG, (H+L), Peroxidase conjugated at 1/1000 dilution.

Blocking/Dilution buffer: 5% NFDm/TBST.

Immunoprecipitation - Anti-CENPC antibody  
[EPR15939] (ab193666)

Why choose a  
recombinant antibody?



**Research with  
confidence**  
Consistent and  
reproducible results



**Long-term and  
scalable supply**  
Recombinant  
technology



**Success from the  
first experiment**  
Confirmed  
specificity



**Ethical standards  
compliant**  
Animal-free  
production

Anti-CENPC antibody [EPR15939] (ab193666)

**Please note:** All products are "FOR RESEARCH USE ONLY. NOT FOR USE IN DIAGNOSTIC PROCEDURES"

### Our Abpromise to you: Quality guaranteed and expert technical support

- Replacement or refund for products not performing as stated on the datasheet
- Valid for 12 months from date of delivery

- Response to your inquiry within 24 hours
- We provide support in Chinese, English, French, German, Japanese and Spanish
- Extensive multi-media technical resources to help you
- We investigate all quality concerns to ensure our products perform to the highest standards

If the product does not perform as described on this datasheet, we will offer a refund or replacement. For full details of the Abpromise, please visit <https://www.abcam.cn/abpromise> or contact our technical team.

#### **Terms and conditions**

---

- Guarantee only valid for products bought direct from Abcam or one of our authorized distributors