




Anti-CDKN2A/p16INK4a antibody [1D7D2A1] ab201980

★★★★★ [1 Abreviews](#) [16 References](#) [6 图像](#)

概述

产品名称	Anti-CDKN2A/p16INK4a抗体[1D7D2A1]
描述	小鼠单克隆抗体[1D7D2A1] to CDKN2A/p16INK4a
宿主	Mouse
特异性	Expression levels of the CDKN2A/p16INK4a protein may vary with sample type. It's barely expressed in normal tissue, and mostly expressed in some tumour tissues, such as cervical cancer, breast cancer and so on. Moreover, only expressed in some cell lines. Please see images for recommended positive controls.
经测试应用	适用于: IHC-P, WB, Flow Cyt
种属反应性	与反应: Human 预测可用于: Mouse, Rat 
免疫原	Recombinant full length protein corresponding to Human CDKN2A/p16INK4a aa 1 to the C-terminus. Database link: P42771  Run BLAST with  Run BLAST with
阳性对照	WB: Recombinant human CDKN2A protein; CDKN2A transfected HEK293 cells; HeLa, HepG2, HEK293 cell lysate. Flow Cytometry: HeLa cells. IHC-P: Human endometrial cancer and esophageal cancer tissue.
常规说明	<p>This product was changed from ascites to supernatant. Lot no's high than GR286368-6 are from Tissue Culture Supernatant</p> <p>The Life Science industry has been in the grips of a reproducibility crisis for a number of years. Abcam is leading the way in addressing this with our range of recombinant monoclonal antibodies and knockout edited cell lines for gold-standard validation. Please check that this product meets your needs before purchasing.</p> <p>If you have any questions, special requirements or concerns, please send us an inquiry and/or contact our Support team ahead of purchase. Recommended alternatives for this product can be found below, along with publications, customer reviews and Q&As</p>

性能

形式	Liquid
存放说明	Shipped at 4°C. Store at +4°C short term (1-2 weeks). Upon delivery aliquot. Store at -20°C long

	term. Avoid freeze / thaw cycle.
存储溶液	Preservative: 0.05% Sodium azide Constituent: PBS
纯度	Protein G purified
纯化说明	Purified from tissue culture supernatant.
克隆	单克隆
克隆编号	1D7D2A1
同种型	IgG1

应用

The Abpromise guarantee Abpromise™ 承诺保证使用 ab201980 于以下的经测试应用

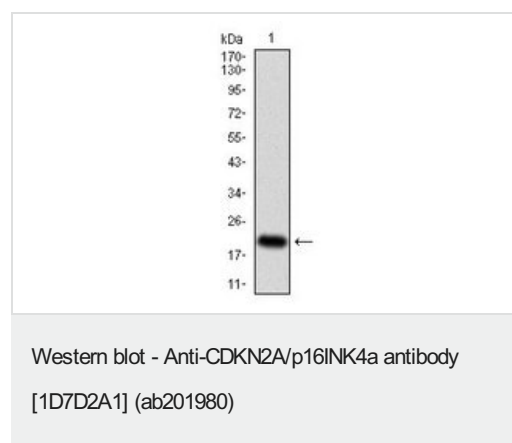
“应用说明”部分 下显示的仅为推荐的起始稀释度;实际最佳的稀释度/浓度应由使用者检定。

应用	Ab 评论	说明
IHC-P		1/200 - 1/1000.
WB		1/500 - 1/2000. Predicted molecular weight: 17 kDa.
Flow Cyt		1/200 - 1/400. ab170190 - Mouse monoclonal IgG1, is suitable for use as an isotype control with this antibody.

靶标

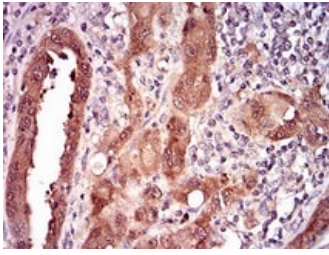
细胞定位	Cytoplasmic and Nuclear
形式	There are 4 isoforms produced by alternative splicing. Isoform 1 also known as: p16INK4a; Isoform 3 also known as: p12; Isoform 4 also known as: p14ARF; p19ARF; ARF.

图片



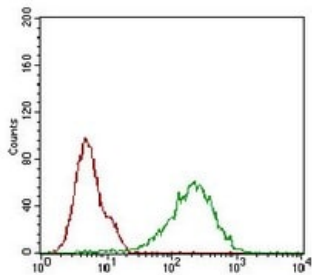
Anti-CDKN2A/p16INK4a antibody [1D7D2A1] (ab201980) at 1/500 dilution + recombinant human CDKN2A protein

Predicted band size: 17 kDa



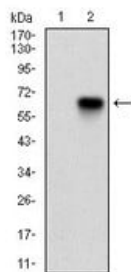
Immunohistochemical analysis of paraffin-embedded human endometrial cancer tissues labeling CDKN2A using ab201980 at 1/200 dilution followed by DAB staining.

Immunohistochemistry (Formalin/PFA-fixed paraffin-embedded sections) - Anti-CDKN2A/p16INK4a antibody [1D7D2A1] (ab201980)



Flow cytometric analysis of HeLa (Human epithelial cell line from cervix adenocarcinoma) cells labeling CDKN2A using ab201980 at 1/200 dilution (green) compared with a negative control (red).

Flow Cytometry - Anti-CDKN2A/p16INK4a antibody [1D7D2A1] (ab201980)



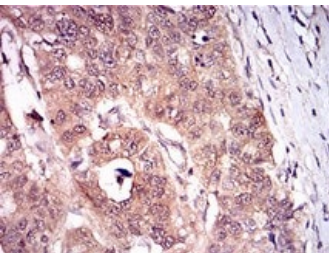
All lanes : Anti-CDKN2A/p16INK4a antibody [1D7D2A1] (ab201980) at 1/500 dilution

Lane 1 : Non-transfected HEK-293 (Human epithelial cell line from embryonic kidney) cell lysate

Lane 2 : CDKN2A (AA: 1-156)-hlgGfC transfected HEK-293 (Human epithelial cell line from embryonic kidney) cell lysate

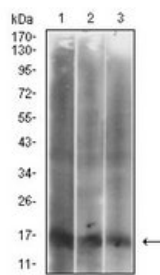
Western blot - Anti-CDKN2A/p16INK4a antibody [1D7D2A1] (ab201980)

Predicted band size: 17 kDa



Immunohistochemical analysis of paraffin-embedded human esophageal cancer tissues labeling CDKN2A using ab201980 at 1/200 dilution followed by DAB staining.

Immunohistochemistry (Formalin/PFA-fixed paraffin-embedded sections) - Anti-CDKN2A/p16INK4a antibody [1D7D2A1] (ab201980)



Western blot - Anti-CDKN2A/p16INK4a antibody
[1D7D2A1] (ab201980)

All lanes : Anti-CDKN2A/p16INK4a antibody [1D7D2A1]
(ab201980) at 1/500 dilution

Lane 1 : HeLa (Human epithelial cell line from cervix
adenocarcinoma) cell lysate

Lane 2 : HepG2 (Human liver hepatocellular carcinoma cell line)
cell lysate

Lane 3 : HEK-293 (Human epithelial cell line from embryonic
kidney) cell lysate

Predicted band size: 17 kDa

Please note: All products are "FOR RESEARCH USE ONLY. NOT FOR USE IN DIAGNOSTIC PROCEDURES"

Our Abpromise to you: Quality guaranteed and expert technical support

- Replacement or refund for products not performing as stated on the datasheet
- Valid for 12 months from date of delivery
- Response to your inquiry within 24 hours
- We provide support in Chinese, English, French, German, Japanese and Spanish
- Extensive multi-media technical resources to help you
- We investigate all quality concerns to ensure our products perform to the highest standards

If the product does not perform as described on this datasheet, we will offer a refund or replacement. For full details of the Abpromise, please visit <https://www.abcam.cn/abpromise> or contact our technical team.

Terms and conditions

- Guarantee only valid for products bought direct from Abcam or one of our authorized distributors