

Anti-Cdk9 antibody ab6544

★★★★★ [5 Abreviews](#) [8 References](#) [2 图像](#)

概述

产品名称	Anti-Cdk9抗体
描述	兔多克隆抗体to Cdk9
宿主	Rabbit
特异性	No reaction is observed against other related cyclin dependent kinases.
经测试应用	适用于: IHC-P, ELISA, IP, WB
种属反应性	与反应: Mouse, Human
免疫原	Synthetic peptide corresponding to Human Cdk9. Multiple synthetic peptides corresponding to C-terminal and N-terminal domains.
阳性对照	WB: human kidney lysate, PC3 lysate IHC: mouse tissue
常规说明	<p>cdk9(PITALRE) interacts with a conserved domain in the TRAF-C region of the tumor necrosis factor signal transducer TRAF2. The positive transcription elongation factor b (P-TEFb) is identified as cdk9 paired with cyclin T1.</p> <p>The Life Science industry has been in the grips of a reproducibility crisis for a number of years. Abcam is leading the way in addressing this with our range of recombinant monoclonal antibodies and knockout edited cell lines for gold-standard validation. Please check that this product meets your needs before purchasing.</p> <p>If you have any questions, special requirements or concerns, please send us an inquiry and/or contact our Support team ahead of purchase. Recommended alternatives for this product can be found below, along with publications, customer reviews and Q&As</p>

性能

形式	Liquid
存放说明	Shipped at 4°C. Store at +4°C short term (1-2 weeks). Upon delivery aliquot. Store at -20°C or -80°C. Avoid freeze / thaw cycle.
存储溶液	Preservative: 0.01% Sodium azide Constituents: 0.88% Sodium chloride, 0.42% Potassium phosphate
纯度	Whole antiserum
纯化说明	Sterile filtered.
克隆	多克隆

同种型

IgG

应用

The Abpromise guarantee

Abpromise™承诺保证使用ab6544于以下的经测试应用

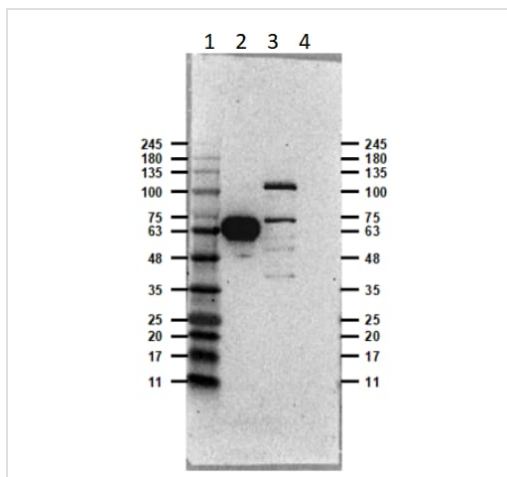
“应用说明”部分 下显示的仅为推荐的起始稀释度;实际最佳的稀释度/浓度应由使用者检定。

应用	Ab评论	说明
IHC-P		1/200 - 1/1000.
ELISA		Use at an assay dependent concentration.
IP		Use at an assay dependent concentration.
WB	★★★★☆ (2)	Use at an assay dependent concentration. Predicted molecular weight: 43 kDa.

靶标

功能	Member of the cyclin-dependent kinase pair (CDK9/cyclin-T) complex, also called positive transcription elongation factor b (P-TEFb), which facilitates the transition from abortive to production elongation by phosphorylating the CTD (C-terminal domain) of the large subunit of RNA polymerase II (RNAP II), SUPT5H and RDBP. The CDK9/cyclin-K complex has also a kinase activity toward CTD of RNAP II and can substitute for P-TEFb in vitro.
组织特异性	Ubiquitous.
序列相似性	Belongs to the protein kinase superfamily. CMGC Ser/Thr protein kinase family. CDC2/CDKX subfamily. Contains 1 protein kinase domain.
细胞定位	Nucleus.

图片



Western blot - Anti-Cdk9 antibody (ab6544)

All lanes : Anti-Cdk9 antibody (ab6544) at 1/1000 dilution

Lane 1 : Opal PreStain 11-245 kDa (MB-210-0500) at 10 μ l

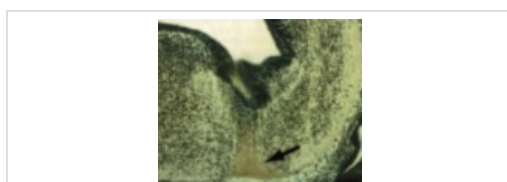
Lane 2 : Human kidney lysate at 5 μ g

Lane 3 : PC3 lysate at 20 μ g

Lane 4 : Blank well

Predicted band size: 43 kDa

Exposure time: 46 seconds



Immunohistochemistry (Formalin/PFA-fixed paraffin-embedded sections) - Anti-Cdk9 antibody (ab6544)

Immunohistochemical staining of mouse tissue using anti-cdk9 (PITALRE) antiserum. The staining shows the location of cdk9 / PITALLRE protein in developing mouse tissue. Arrow indicates area of high expression.

Please note: All products are "FOR RESEARCH USE ONLY. NOT FOR USE IN DIAGNOSTIC PROCEDURES"

Our Abpromise to you: Quality guaranteed and expert technical support

- Replacement or refund for products not performing as stated on the datasheet
- Valid for 12 months from date of delivery
- Response to your inquiry within 24 hours
- We provide support in Chinese, English, French, German, Japanese and Spanish
- Extensive multi-media technical resources to help you
- We investigate all quality concerns to ensure our products perform to the highest standards

If the product does not perform as described on this datasheet, we will offer a refund or replacement. For full details of the Abpromise, please visit <https://www.abcam.cn/abpromise> or contact our technical team.

Terms and conditions

- Guarantee only valid for products bought direct from Abcam or one of our authorized distributors