

Anti-Cdk6 antibody [EPR4515] ab124821

敲除验证
重组
RabMAb

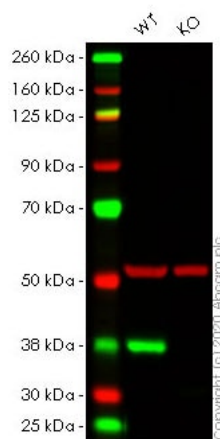
★★★★★
[2 Abreviews](#)
[91 References](#)
[8 图像](#)

概述

产品名称	Anti-Cdk6抗体[EPR4515]
描述	兔单克隆抗体[EPR4515] to Cdk6
宿主	Rabbit
特异性	Based on the immunogen sequence, we do not expect the antibody to cross-react with other CDK family members. No cross-reactivity testing has been performed.
经测试应用	适用于: ICC/IF, WB, IHC-P, Flow Cyt (Intra) 不适用于: IP
种属反应性	与反应: Human
免疫原	Synthetic peptide. within Human Cdk6 aa 300 to the C-terminus (C terminal). The exact sequence is proprietary. Database link: Q00534
阳性对照	WB: Jurkat, K562, HAP1, HeLa and 293T cell lysates. IHC-P: Human tonsil tissue. ICC/IF: HeLa and wild-type HAP1 cells.
常规说明	<p>This product is a recombinant monoclonal antibody, which offers several advantages including:</p> <ul style="list-style-type: none"> - High batch-to-batch consistency and reproducibility - Improved sensitivity and specificity - Long-term security of supply - Animal-free production <p>For more information see here.</p> <p>Our RabMAb[®] technology is a patented hybridoma-based technology for making rabbit monoclonal antibodies. For details on our patents, please refer to RabMAb[®] patents.</p> <p>Mouse, Rat: We have preliminary internal testing data to indicate this antibody may not react with these species. Please contact us for more information.</p>

性能

形式	Liquid
存放说明	Shipped at 4°C. Store at +4°C short term (1-2 weeks). Upon delivery aliquot. Store at -20°C. Stable for 12 months at -20°C.



Western blot - Anti-Cdk6 antibody [EPR4515]
(ab124821)

All lanes : Anti-Cdk6 antibody [EPR4515] (ab124821) at 1/1000 dilution

Lane 1 : Wild-type HeLa cell lysate

Lane 2 : CDK6 knockout HeLa cell lysate

Lysates/proteins at 20 µg per lane.

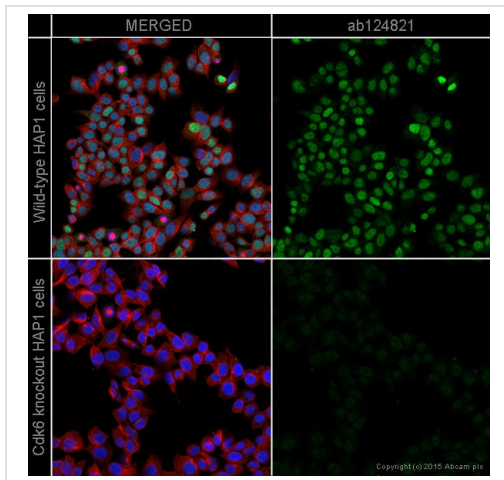
Performed under reducing conditions.

Predicted band size: 37 kDa

Observed band size: 37 kDa

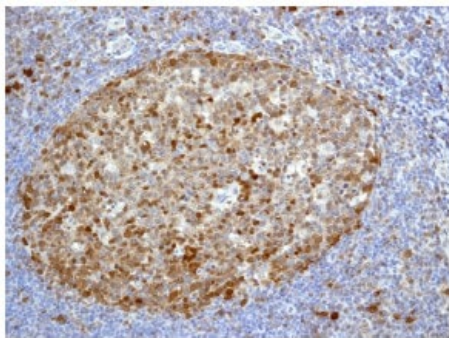
Lanes 1- 2: Merged signal (red and green). Green - ab124821 observed at 37 kDa. Red - Anti-alpha Tubulin antibody [DM1A] - Loading Control ([ab7291](#)) observed at 50 kDa.

ab124821 was shown to react with Cdk6 in wild-type HeLa cells in western blot. Loss of signal was observed when knockout cell line [ab266059](#) (knockout cell lysate [ab257088](#)) was used. Wild-type HeLa and CDK6 knockout HeLa cell lysates were subjected to SDS-PAGE. Membrane was blocked for 1 hour at room temperature in 0.1% TBST with 3% non-fat dried milk. ab124821 and Anti-alpha Tubulin antibody [DM1A] - Loading Control ([ab7291](#)) overnight at 4°C at a 1 in 1000 dilution and a 1 in 20000 dilution respectively. Blots were developed with Goat anti-Rabbit IgG H&L (IRDye®800CW) preadsorbed ([ab216773](#)) and Goat anti-Mouse IgG H&L (IRDye®680RD) preadsorbed ([ab216776](#)) secondary antibodies at 1 in 20000 dilution for 1 hour at room temperature before imaging.



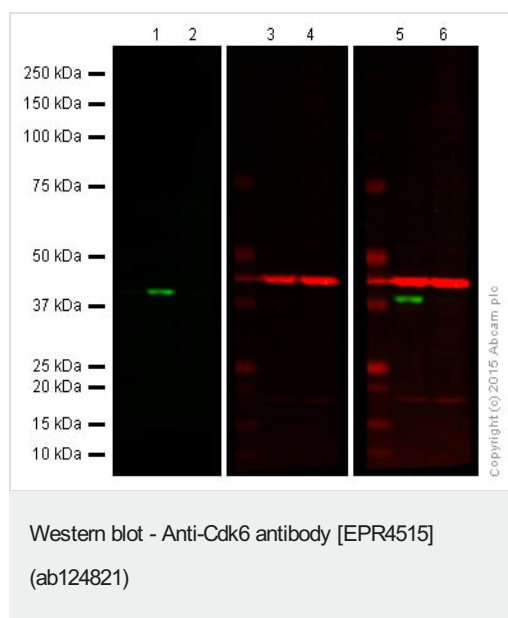
Immunocytochemistry/ Immunofluorescence - Anti-Cdk6 antibody [EPR4515] (ab124821)

ab124821 staining Cdk6 in wild-type HAP1 cells (top panel) and Cdk6 knockout HAP1 cells (bottom panel). The cells were fixed with 4% formaldehyde (10min), permeabilized with 0.1% Triton X-100 for 5 minutes and then blocked with 1% BSA/10% normal goat serum/0.3M glycine in 0.1% PBS-Tween for 1h. The cells were then incubated with ab124821 at 1/500 dilution and **ab195889** at 1/250 dilution (shown in pseudo colour red) overnight at +4°C, followed by a further incubation at room temperature for 1h with a goat secondary antibody to Rabbit IgG (Alexa Fluor® 488) (**ab150081**) at 2 µg/ml (shown in green). Nuclear DNA was labelled in blue with DAPI.



Immunohistochemistry (Formalin/PFA-fixed paraffin-embedded sections) - Anti-Cdk6 antibody [EPR4515] (ab124821)

ab124821 at 1/100 dilution, staining Cdk6 in Formalin fixed Paraffin-embedded Human tonsil tissue by Immunohistochemistry. Heat mediated antigen retrieval was performed with 0.01M citrate buffer, pH 6.0.



Lanes 1-2 : Anti-Cdk6 antibody [EPR4515] (ab124821) at 1/10000 dilution

Lanes 3-4 : Anti-beta Actin antibody [mAbcam 8226] - Loading Control ([ab8226](#)) at 1/1000 dilution

Lanes 1 & 3 & 5 : Wild-type HAP1 cell lysate

Lanes 2 & 4 & 6 : CDK6 knockout HAP1 cell lysate

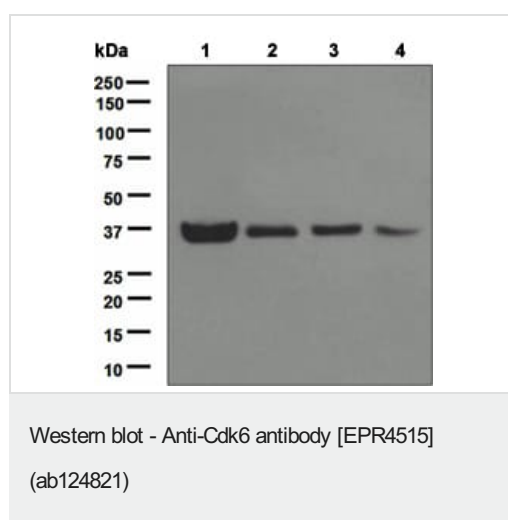
Lysates/proteins at 20 µg per lane.

Predicted band size: 37 kDa

Lanes 1 and 2: Green signal from target - ab124821 observed at 37 kDa

Lanes 3 and 4: Red signal from loading control - [ab8226](#) observed at 42 kDa

Lanes 5 and 6: Merged (red and green) signal
ab124821 was shown to specifically react with CDK6 when CDK6 knockout samples were used. Wild-type and CDK6 knockout samples were subjected to SDS-PAGE. ab124821 and [ab8226](#) (loading control to beta actin) were diluted at 1/10 000 and 1/1000 respectively and incubated overnight at 4°C. Blots were developed with Goat anti-Rabbit IgG H&L (IRDye® 800CW) preadsorbed ([ab216773](#)) and Goat anti-Mouse IgG H&L (IRDye® 680RD) preadsorbed ([ab216776](#)) secondary antibodies at 1/10,000 dilution for 1 h at room temperature before imaging.



All lanes : Anti-Cdk6 antibody [EPR4515] (ab124821) at 1/1000 dilution

Lane 1 : Jurkat cell lysate

Lane 2 : K562 cell lysate

Lane 3 : HeLa cell lysate

Lane 4 : 293T cell lysate

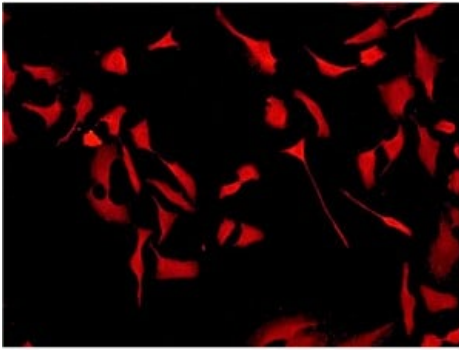
Lysates/proteins at 10 µg per lane.

Secondary

All lanes : Goat-anti-rabbit HRP at 1/2000 dilution

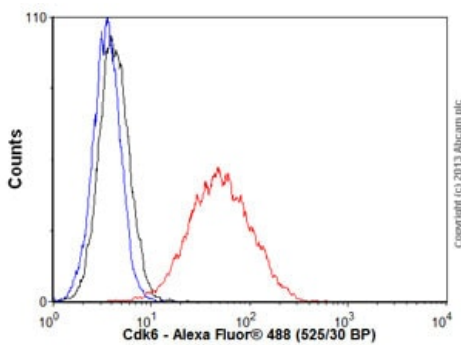
Predicted band size: 37 kDa

Observed band size: 37 kDa



Immunocytochemistry/ Immunofluorescence - Anti-Cdk6 antibody [EPR4515] (ab124821)

ICC/IF image of ab124821 at 1/100 dilution, staining Cdk6 in HeLa cells.



Flow Cytometry (Intracellular) - Anti-Cdk6 antibody [EPR4515] (ab124821)

Overlay histogram showing HeLa cells stained with ab124821 (red line). The cells were fixed with 80% methanol (5 min) and then permeabilized with 0.1% PBS-Tween for 20 min. The cells were then incubated in 1x PBS / 10% normal goat serum / 0.3M glycine to block non-specific protein-protein interactions followed by the antibody (ab124821, 1/1000 dilution) for 30 min at 22°C. The secondary antibody used was Alexa Fluor® 488 goat anti-rabbit IgG (H&L) (**ab150077**) at 1/2000 dilution for 30 min at 22°C. Isotype control antibody (black line) was rabbit IgG (monoclonal) (0.1 µg/1x10⁶ cells) used under the same conditions. Unlabelled sample (blue line) was also used as a control. Acquisition of >5,000 events were collected using a 20mW Argon ion laser (488nm) and 525/30 bandpass filter.

Why choose a recombinant antibody?



Research with confidence
Consistent and reproducible results



Long-term and scalable supply
Recombinant technology



Success from the first experiment
Confirmed specificity



Ethical standards compliant
Animal-free production

Anti-Cdk6 antibody [EPR4515] (ab124821)

Please note: All products are "FOR RESEARCH USE ONLY. NOT FOR USE IN DIAGNOSTIC PROCEDURES"

Our Abpromise to you: Quality guaranteed and expert technical support

- Replacement or refund for products not performing as stated on the datasheet
- Valid for 12 months from date of delivery
- Response to your inquiry within 24 hours

- We provide support in Chinese, English, French, German, Japanese and Spanish
- Extensive multi-media technical resources to help you
- We investigate all quality concerns to ensure our products perform to the highest standards

If the product does not perform as described on this datasheet, we will offer a refund or replacement. For full details of the Abpromise, please visit <https://www.abcam.cn/abpromise> or contact our technical team.

Terms and conditions

- Guarantee only valid for products bought direct from Abcam or one of our authorized distributors